

Product datasheet for MR212072

Ank3 (NM_170728) Mouse Tagged ORF Clone

Product data:

Product Type:	Expression Plasmids
Product Name:	Ank3 (NM_170728) Mouse Tagged ORF Clone
Tag:	Myc-DDK
Symbol:	Ank3
Synonyms:	2900054D09Rik; AI314020; An; Ank; Ank-3; AnkG; Anky; Ankyrin-3; Ankyrin-G
Mammalian Cell Selection:	Neomycin
Vector:	pCMV6-Entry (PS100001)
E. coli Selection:	Kanamycin (25 ug/mL)
ORF Nucleotide Sequence:	>MR212072 ORF sequence Red=Cloning site Blue=ORF Green=Tags(s)

TTTTGTAATACGACTCACTATAGGGCGGCCGGAATTCGTCGACTGGATCCGGTACCGAGGAGATCTGCC
GCC**CGATCGCC**

ATGAGTGAAGAGCCAAAGGAGAAGCCCGCCAAGCCTGCTCATAGGAAGAGGAAAGGAAAAAGTCTGATG
CCAACGCAAGTTACTTAAGAGCAGCTCGGGCAGGGCACCTGGAAAAGGCCCTTGACTACATCAAAAATGG
AGTGGACGTCAACATCTGTAACCAAGATGGATTGAATGCACTCCATCTTGCTTCAAAGAAGGCCATGTG
GAAGTGGTCTCTGAGCTGCTGCAGAGGGAAGCCAATGTTGATGCCGCCACAAAGAAAGGAAACACGGCCT
TACACATCGCATCTTTGGCTGGCAAGCGGAAGTGGTCAAGGTCTTGTTACGAACGGAGCGAATGTCAA
CGCACAATCTCAGAAATGGCTTACACCATTGTATATGGCAGCCCAGGAGAACCACCTGGAAGTCGTCAAG
TTTCTTCTGGACAATGGCGCCAGCCAAAGCCTGGCCACAGAGGACGGCTTACGCCATTGGCCGTGGCTC
TGCAACAAGGTCAATGACCAAGTCGTGTCCTCCTGCTCGAGAACGACACGAAGGGAAAAAGTGCAGCTCCC
AGCCCTCCACATCGCAGCCCGGAAAGACGACACCAAGGCAGCAGCTCTGCTCCTGCAGAAATGACACAAA
GCGGACGTGGAGTCAAAGAGTGGCTTACCCCGCTCCACATAGCTGCCACTATGGGAACATCAATGTGG
CCACGTTGCTGTTAAACCGAGCGGCTGCTGTGGACTTACCCGACGGAATGACATCACTCCCTTACACGT
TGCTCGAAGCGAGGAAATGCAAAATATGGTGAAGCTATTGCTGGACCGGGGTGCGAAGATCGATGCCAAG
ACCAGGACGGTCTGACTCCGTTGCACTGTGGGGCAGAAAGTGGCCATGAGCAGGTGGTAGAGATGTTGC
TTGACAGATCCGCCCCATCCTTTCAAAAACCAAGAATGGATTGTCGCCACTGCACATGGCCACACAAGG
AGACCATTTAAACTGCGTCCAACCTCCTCCAGCACAACGTGCCCGTGGACGACGTCAACCAACGACTAC
CTGACTGCCCTCCATGTGGCTGCCACTGCGGCCATTACAAAGTTGCCAAGGTTCTTTGGATAAGAAAAG
CTAGCCCCAATGCCAAAGCCCTGAATGGCTTACCCCTCTCCATATCGCCTGCAAAAAGAACCAGCATCCG
AGTAATGGAACCTCTTTGAAGCACGGTGCATCTATTCAAGCCGTAACCGAGTCGGGCCCTTACCCCAATC
CATGTTGCTGCCTTCATGGGACATGTAATATCGTGTACAGCTAATGCATCATGGAGCCTCCCAAAACA
CCACCAATGTGAGAGGAGAGACGGCATTGCATATGGCGGCTCGGTCCGGACAAGCAGAAGTGGTGGGTA
TCTGGTCCAAGATGGGGCTCAGGTAGAAGCAAAAGCTAAGGATGACCAGACTCCACTCCACATCTCAGCC



[View online »](#)

CGACTTGGGAAAGCTGACATAGTGCAACAACCTGTTACAGCAAGGAGCATCCCCAATGCAGCAACAACCT
 CTGGGTACACCCCTTCACCTTGC GGCCAGAGAGGGGCATGAGGATGTAGCTGCGTTCTCTGGATCA
 TGGAGCATCTTTATCCATAACAACAAAGAAGGGATTACCCCTCTGCACGTGGCAGCCAAATACGGAAAG
 CTTGAAGTCGCAAGTCTCCTGCTGCAGAAGAGTGCCTCTCCCGATGCCGAGGGAAGAGCGGGCTAACTC
 CACTGCATGTAGCAGCGCATTACGATAATCAGAAAAGTGGCCCTTCTGCTCTTGGACCAGGGAGCCTCACC
 CCACGCAGCCGCAAGAATGGCTATACACCACTGCACATCGCGGCCAAGAAGAACCAGATGGACATAGCC
 ACGTCCCTGCTGGAGTACGGTGTGATGCAAAACGCGGTTACCCGGCAAGGGATTGCGTCCGTCCATCTTG
 CGGCACAGGAAGGGCACGTGGACATGGTGTGCTGCTCCTGAGTAGAAAACGCGAATGTCAACCTGAGCAA
 TAAGAGCGGTCTCACCCCACTCCACCTGGCTGCTCAAGAAGACCGAGTGAATGTGGCCGAGGTCTTGTC
 AACCCAGGGGGCCCATGTGGATGCTCAGACAAAGATGGGCTACACCCCGCCCATGTGGGCTGCTACTATG
 GAAATATCAAAATAGTCAATTTTCTGCTGCAGCATTCTGCAAAAGTTAATGCCAAGACGAAGAATGGATA
 CACAGCACTGCACCAGGCTGCTCAGCAGGGCCACACGCATATCATCAATGTCTTGCTTCAAGAACGCC
 TCCCCAATGAACCTACTGTGAATGGGAACACAGCTCTGGCCATCGCCCGCGCCTTGTTACATCTCGG
 TGGTTGACACACTGAAGTCTGACGGAGGAAATATGACCACCACTACCATCACGGAGAAGCACAAAAT
 GAATGTCCGAAACGATGAATGAAGTCTCGATATGTCAGACGATGAAGTGAAGATGCCATCACAGGG
 GACACTGACAAGTATCTCGGGCCACAGGACCTTAAAGAGCTAGGTGATGACTCCCTGCCAGCAGAAGGTT
 ACGTAGGCTTCAGTCTTGAGGCCGTTCTGCCAGCCTCCGCTCCTCAGTTCGGATAGGTCTACACCTT
 GAACAGAAGCTCCTACGCAAGGGACAGCATGATGATAGAGGAACTTCTGGTACCATCAAAGAGCAGCAC
 CTGACGTTACAGAGGGAGTTTATTCTGACTCCCTCAGACACTACAGTTGGGCAGCGGACACGTTAGATA
 ATGTGAACCTGGTCTCAAGCCCGTGCATTCTGGGTTTCTGGTTAGCTTTATGGTGGACGCGAGAGGGGG
 CTCCATGCGAGGAAGCCGCCACCACGGGATGCGGATCATCCCTCCGCGAAAGTGTACGGCCCCACC
 CGCATACGTCGCCCTGGTAAAGAGACATAAACTGGCCAACCCACCCCATGGTGAAGGAGAGGGAT
 TAGCCAGTAGGCTGGTAGAAATGGTCTGCGGGGGCACAAATTTTAGGCCCGTCATTGTGAAATCCC
 TCATTTTGGGTCCATGAGGGGGAAGGAGAGAGAACTTATCGTCTTTCGGAGCGAGAACGGAGAGACCTGG
 AAGGAACATCAGTTTGACAGTAAAAACGAAGACCTCGCGGAGCTTCTCAATGGCATGGATGAAGAACTCG
 ACAGCCCGGAAGAGTTGGGTACAAAGCGCATCTGCAGAATTATCACAAGGATTTCCCCAGTATTTTGC
 CGTGGTTTCCCGATTAAAGCAGGAAAGCAACCAGATCGGTCTGAGGGTGGGATTCTGAGCAGCACCACC
 GTGCCCTCGTCCAGGCCTCCTTCCAGAGGGCGCCTTAACCAAGAGGATCCGTGTGGGTCTCCAGGCTC
 AGCCCGTGCCAGAGGAACGGTAAAAAAATCCTTGGGAACAAAGCAACATTTAGCCCAATTGTCACGGT
 AGAGCCGAGGAGAAGGAAGTTCCATAAAGCCGATCACCATGACCATTCCGGTGCCCGCCCTCGGGAGAA
 GCGGTGTCCAATGGGTACAAGGGGGATGCCACGCCAACCTGCGGCTCCTCTGCAGCATCACAGGAGGCA
 CCTCACAGCTCAATGGGAAGACATCACAGGAACAACCCCTCTGACGTTTATAAAGGATTGTGTGCTTT
 CACAACCAACGTTTCAGCCAGATTCTGGCTGGCGGACTGCCATCAGGTGTTAGAGACCGTAGGGCTAGCC
 TCCCAGCTGTACAGAGAGCTGATATGCGTTCCTACATGGCCAAGTTCGTTGTGTTTGC AAAACAAACG
 ACCCGGTGGAGTCTCGCTGAGGTGCTTCTGTATGACAGACGACAGGGTGGACAAAACCTGGAGCAGCA
 GGAGAACTTCGAGGAGTTGCCAGAAGCAAGACATTGAGGTTCTGGAAGGAAAGCCCATCTACGTTGAT
 TGCTATGGAAACCTGGCCCTCTGACCAAAGGAGGACAGCAGCTTGTTTTAACTTTTATTCTTTCAAAG
 AAAACAGACTGCCATTTCCATCAAGATCAGAGACACCAGTCAAGAGCCCTGTGGCCGCTGCTTTCT
 GAAGGAGCCAAAGACAACAAAGGGATTACCCCAAACAGCTGTTTTGCAACTTAAATATTACTCTGCCGGCA
 CATAAAAAGGCTGAGAAGGCAGACAGACGCCAGAGCTTTGCCTCCCTAGCTTTACGTAAGCGCTACAGCT
 ACTTGACTGAACCCAGCATGAGTCCGCAGAGTCTTGTGAGCGGACGGATACAGGATGGCGATAGTAGC
 CGATCACCTGGGACTTAGTTGGACAGAGCTGGCAAGGGAAGTGAATTTTTAGTGGATGAAATCAACCAA
 ATACGTGTGAAAATCCCAATCTTTAATTTCTCAGAGCTTATGTTATTA AAAAAGTGGGTGACCAGAG
 ACGGAAAGAAATGCCACAACCTGATGCCTAACTTCGGTCTTAACGAAGATTAACCGGATAGACATTGTAAC
 TCTGCTGGAAGGACCAATATTTGATTATGGGAATATTTAGGCACCAGAAGCTTTGCAGATGAAAACAT
 GTTTTCCATGACCCAGTTGATGGTTGGCAGAACGAGACGCCAAGTGAAGCCTAGAGTCCCAGCGCAAG
 CTGAAGACTAACTGGTGGTACTGGACCGTCTGGATGACAGCTCTGACCAGGCTCGGGATTCTATTAC
 CTATACCTCACGGGAGAACCTGGGAAGATCGAAGCAAATGGAACCACACAGCGGAAGTATTCCAGAA
 GCAAAGGCAAAAACCTACTTCCCGGAATCCCAAAACGATATAGGGAAACAGAGCATCAAGGAGAACCTGA
 AACCAAAAACACACGGATGTGGTGCACCTGAGGAACCAAGTGTGCGCCCTCACAGCCTACCAGAAATCTCT
 GGAAGAAACCAGCAAGCTTGTCATAGAAGACGCACCTAAACCTGTGTGCTGTCGGCATGAAAAAGATG
 ACCAGGACTACGGCTGACGGCAAGCCAGGCTCAACCTCCAGGAAGAAGAGGGGTCCACCAGGTGAGGC

CTAAGCAGGGAGAAGGCTATAAGGTGAAGACGAAGAAGGAAATCCGGAACGTGGAGAAGAAAACCCAC

ACGCGTACGCGGCCGCTCGAGCAGAACTCATCTCAGAAGAGGATCTGGCAGCAATGATATCCTGGATT
ACAAGGATGACGACGATAAGGTTTAA

Protein Sequence:

>MR212072 protein sequence
Red=Cloning site Green=Tags(s)

MSEEPKEKPAKPAHRKRKGGKSDANASYLRAARAGHLEKALDYIKNGVDVNICNQNLNALHLASKEGHV
EYVSELLQREANVDAATKKGNTALHIASLAGQAEVVKVLVTNGANVNAQSQNGFTPLYMAAQENHLEVVR
FLLDNGASQSLATEDGFTPLAVALQQGHDQVVSLLLENDTKGKVRPALHIAARKDDTKAAALLQNDTN
ADVESKSGFTPLHIAAHYGNINVTLLLNRAAAVDFTARNDITPLHVASKRGNANMVKLLDRGAKIDAK
TRDGLTPLHCGARSGHEQVEMLLDRSAPILSKTKNGLSPLHMATQGDHLNCVQLLLQHNVPVDDVTNDY
LTALHVAACHGHIYKVAKVLLDKKASPNKALNGFTPLHIAACKNRIKRVMEMLLKHGASIQAVTESGLTPI
HVAAFMGHVNIQSVMHMGASPNTTNVRETALHMAARSGQAEVVRYLVQDGAQVEAKAKDDQTPLHISA
RLGKADIVQQLLQQGASPNAAATSGYTPLHLAAREGHEDVAAFLLDHGASLSITTKKGFPLHVAAYGK
LEVASLLQKSASPDAAGKSGLTPLHVAHYDNQKVALLLDQGASPHAAKNGYTPLHIAAKKNQMDIA
TSLLEYGADANAVTRQGIASVHLAAQEGHVDMSLLSRNANVNLNKSGLTPLHLAAQEDRVNVAEVLV
NQGAHVDAQTKMGYTPPHVGCHYGNIKIVNLLQHSKVNKTKNGYALHQAQQGHTHIINVLLQNNA
SPNELTVNGNTALAIARRLGYISVVDTLKVVTEEIMTTTTITEKHKMNVPETMNEVLDMSSDEGEDAITG
DTDKYLGPQDLKELGDDSLPAEGYVGFSLGARSASLRSFSSDRSYTLNRSSYARDSMMIEELLVPSKEQH
LFTTREFDSDSLRHYSWAADTLDNVNLVSSPVHSGFLVSFMDARGGSMRGRHHGMRIIIPPRKCTAPT
RITCRLVKRHKLANPPMVEGEGLASRLVEMGPAQAFLGPVIVEIPHFGSMRGKERELIVLRSEGETW
KEHQFDSKNEDELAELNGMDEELDSPEELGTRICRIITKDFPQYFAVVSRIKQESNQIGPEGGILSST
VPLVQASFPEGALTKRIRVGLQAQVPPEETVKKILGNKATFSPIVTVPRRRKFHKPITMTIPVPPPSGE
GVSNGYKGDATPNLRLCSITGGTSPAQWEDITGTTPLTFIKDCVSFTTNVSARFWLADCHQVLETVGLA
SQLYRELICVPYMAKFVVFAKTNDPVESSLRCFCMTDDRVDKTLQEQNFEEVARSKDIEVLEKPIYVD
CYGNLAPLTKGGQQLVFNFYSFKENRPFSEIKIRDTSQEPGRLSFLKEPKTTKGLPQTAVCNLITLPA
HKKAEKADRRQSFASLALRKRYSYLTPSMSQPQCERTDIRMAIVADHLGLSWTELARELNFVDEINQ
IRVENPNLSISQSFMLLKKWVTRDGKNATTDALTSVLTKINRIDIVTLLEGPIFDYGNISGTRSFADENN
VFHDPVDGWQNETPSGSLESPAQARRLTGGLDRLDSSDQARDSITSYLTGEPGKIEANGNHTAEVIPE
AKAKPYFPESQNDIGKQSIKENLKPETHGCGRTEEPVSPLTAYQKSLEETSKLVIEDAPKPCVPVGMKKM
TRTTADGKARLNLQEEEGSTRSEPKQGEQYKVKTKKEIRNVEKKT

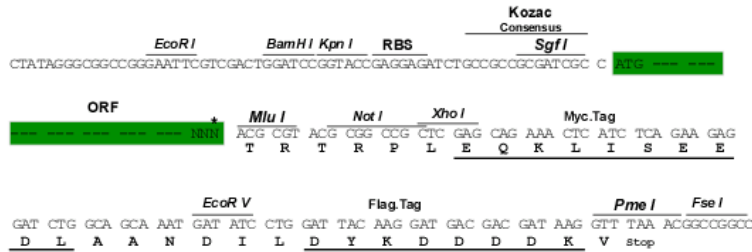
TRTRPLEQKLISEEDLAANDILDYKDDDDKV

Restriction Sites:

SgfI-MluI

Cloning Scheme:

Cloning sites used for ORF Shuttling:



* The last codon before the Stop codon of the ORF

ACCN: NM_170728

ORF Size: 5181 bp

OTI Disclaimer: The molecular sequence of this clone aligns with the gene accession number as a point of reference only. However, individual transcript sequences of the same gene can differ through naturally occurring variations (e.g. polymorphisms), each with its own valid existence. This clone is substantially in agreement with the reference, but a complete review of all prevailing variants is recommended prior to use. [More info](#)
OTI Annotation: This clone was engineered to express the complete ORF with an expression tag. Expression varies depending on the nature of the gene.

Components: The ORF clone is ion-exchange column purified and shipped in a 2D barcoded Matrix tube containing 10ug of transfection-ready, dried plasmid DNA (reconstitute with 100 ul of water).

Reconstitution Method:

1. Centrifuge at 5,000xg for 5min.
2. Carefully open the tube and add 100ul of sterile water to dissolve the DNA.
3. Close the tube and incubate for 10 minutes at room temperature.
4. Briefly vortex the tube and then do a quick spin (less than 5000xg) to concentrate the liquid at the bottom.
5. Store the suspended plasmid at -20°C. The DNA is stable for at least one year from date of shipping when stored at -20°C.

RefSeq: [NM_170728.1](#)

RefSeq Size: 9320 bp

RefSeq ORF: 5181 bp

Locus ID: 11735

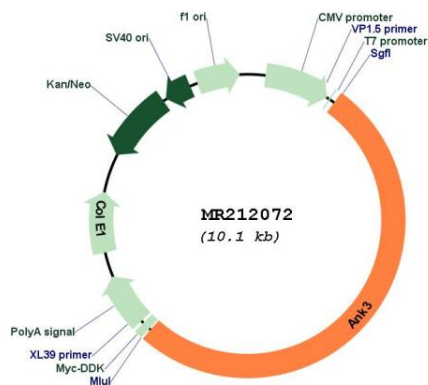
UniProt ID: [G5E8K5](#)

Cytogenetics: 10 36.1 cM

MW: 188.2 kDa

Gene Summary: This gene encodes a member of the ankyrin protein family. Ankyrins link integral membrane proteins to the spectrin-based cytoskeleton. Ankyrin family members share a protein structure which includes three independently folded domains: the N-terminal ankyrin repeat domain, the central spectrin-binding domain, and the C-terminal rod domain. This ankyrin functions as the major ankyrin in the kidney and may play a role in the polarized distribution of many integral membrane proteins to specific subcellular sites. Alternative splicing of this gene results in multiple transcript variants encoding different isoforms. [provided by RefSeq, Jul 2008]

Product images:



Circular map for MR212072