

Product datasheet for MR212061

Pprc1 (BC066048) Mouse Tagged ORF Clone

Product data:

Product Type:	Expression Plasmids
Product Name:	Pprc1 (BC066048) Mouse Tagged ORF Clone
Tag:	Myc-DDK
Symbol:	Pprc1
Synonyms:	MGC12121, PRC, mKIAA0595, A930018M19
Mammalian Cell Selection:	Neomycin
Vector:	pCMV6-Entry (PS100001)
E. coli Selection:	Kanamycin (25 ug/mL)
ORF Nucleotide Sequence:	>MR212061 representing BC066048 Red=Cloning site Blue=ORF Green=Tags(s)

TTTTGTAATACGACTCACTATAGGGCGGCCGGAATTCGTCGACTGGATCCGGTACCGAGGAGATCTGCC
GCC**CGATCGCC**

ATGGCGGCGCGCCGGGGACGGAGAGACCGAGTCGCGCCGCTCCGACTGGGGGCCGGGTCTGACCCTG
GCGGTGGAGTGCCTGGCGCAGTTGGGCGAGTCGAAGCCAAGCGCGTATGGGACCGGGGCTCCGTGAG
CGCCGCGGAGCAGGTCCATGAGGAAGGGAATGACTCTAGCTTTGTCAGTCTTTCTCGACTGGGCCCTCT
CTGAGGGAGAAAGACCTGAAAATGGAGGAAGTACTGACGAGATGAGACCCTCTGGAGACCATGCAGA
GCTACATGGAGCGCTCCCTTATATCCCTCATTGAGGATTTGGAGAGAGCAGATTATCTCTGGAGACCA
GAATGAAATGTCGCTGCTCACAGCTCTGACGGAGATCTTGACAATGCAGATTCTGAGAACCTGTCCCT
TTTGACACCATTCTGATTCAGAGCTGCTGTCCTCCCTCGGGAGAGCTCCTCTCTGCACAAGCTGCTCA
ATCTCTCTCGGACACCCCGAAGCTGACCTTATCACCCAAATTGACCCTTTGGGGCCAGCACAGGAAG
TAGTCGGGTGAGTGGGGTTGAGGTGCCTCTTGCAGACTCTCCATGGGACTTCTCTCCGCCTCCTTTCTTG
GAAACTTCTCCCTAAGCTGCCTAGCTGGAGACCCTCGAGACCAAGACCTCGATGGGGTCACTCCCTC
CTCCTCAGCAGCGCAGTATGGGAAGAGGAGGAGGAGGTCGCCGGTTTCAGTGGTCAGATGCTTGTCTG
CAAACCGACAACCTCTGTGAACAATGCTCTGGACTTCCCATGCACCTGGCATGCCCTGAGGAAGAAGGC
ACAGCCGAGGGAGCAGATGCGCCAGCGTCAGCCCTGGTGACGAGAGCATCTCCTTGTAGTGAGCTGG
TTCGGGCATGCATCCCTACTGCTTGCCCAACCTCACCACTTGGCATCCCTTGGGGTGAACCTTGAGGG
ACAGGCTGATGCTGACGCTGACGAGTTGACGCTGCCTGAGGGCTGTGTTGTACTGGAGATTGTTGGCCAG
GCAGCCACAACCTGGTGTGACCTCGAGATCCCAGTCGTGGTGCAGGAGATTCTTCTGGATCCCAGTCTG
TGCTCCTGGATGAGTCTTAGGAAGCAGTCTGCCTTGCAGTTACTCATGCCACCATGGAGTCCGAGAC
CGAAGCTGCTGTGCTGAAGTTGCTCCTTGCCCCGATGAAGAATTACCACTGAGCTCCGCCTGCTTATTG
GAGCCCAGGAAATCATGGAGTCATTGACACCAAGGAACCTCAGAGCCTACCTGCCAGTCAAGTCAGG
GTTCTCAGAAAGTCCCAGAAAGGTTAGGAAGAAGAACAAGGAACAGCCAACAGCCTGTGTGGAAGC
CTGTACCAGGCGCTGAGGTCATCTTCTCGAGGACAGTCTACTGTCTGCAGAGGTGAACCTCAGGCA



[View online >](#)

GGCAGTTCACAGAAACAGCCCCAGGAAGAGCTTCAGAGAGAGGCTGCTGCCCTTCAGAGCAGAGGGAAGC
CACGGGCTTGGGCTCGGGCTGGGCAGCTGCCTTAGAGAAGACAGGGTCCGAGAAATTTAGAGAGAAGTGC
GGGACAGGATAGTCTGCTGAAGAAGACGCACTGGATCTCTGTCTAAGCTGCTTGAACCCAGCCAAAGCC
AACCCACTCTCTCATTAAATGACTCTGCTCAAGCTGACTCCATGCCTGTTGACTCTGTTGAAGGTGATT
CCCCTGCAGTTGGCAATGCTGCACCTGGTATCAGGCTTCATCTGGTACAGAGCTGGTTGGTTCTCTCCC
AGTAGGCCAAAACCTGACTAGCCAGTCCCTGGCTGACAAGAAAGGAATTAACCTGCAGTGGCTATTCCC
ACTTCGGATAACTTGTCTCCAGCTGATGCTCAGCAACACAGTGGCAGCTGACCTGTCCAAATGACG
CTGCTCCAGCAGATCCTGTGCTAGTTAAGTGCAGACCCACTGATCCTAGGCGTGCAGCAGCAGCAGC
AGCAGCAGCTCAGGGAGTCTGCTTCCCTACAGTCCGCAGACCATCCTAAGGTCGTGAGCCCTGAAGGC
AAGGATGTTGTAGGTCTCTGAAGGTGGAAGGTAGTACCAGCGCTACAACCCAGGAAGCCAAACCTCGGC
CTCTCAGCCTATCTGAGTACCGTACGCGAAGGCAGCAACGGCAAACGGAAGCAGAAGACAGGAATTTCTCA
GCCCCAGTTGTTGGCAAGTGGCCTAGTCTCCAGAGACCCACAGAACTGGCAGATATCCCTTGCCCT
GTTCCATCAGCCCAGCCAGGAAGACAGCTCCACAGAGAAGCCCTATAGCTGTACCAGAGACTGTGTCTG
TGGGTTCTAATCCTGTTTCCCCTACTCCTGAGCCATCTGCAAGCAAATTTATGGTTTCAACTCACTCTGA
ACAGGTGCATCTCATGAGATGCCACTTGCAAGTACAGCACCCTCCTCTTGGCGTCTGTGTCTCCT
GCTGGACCCATCCCGTCCACGGTCCCGCTCCTTTGCCTCCTTCCCTCCGAGTGTACCGCTTTGCTTC
CTCTTCCCTCAGGTGGCCATGGAGTCCCCCGCCTGCCCCACCTCCTTTGCAACCTCCTGGACTTCCAGT
ATCAATGAGACAAATGCCACCTGACCCCTATACTCAGTATGCCCTGTGCCACCTGGTCTTGTACCCC
TCTGTGTCCTCCGGGCTATTCTTGTGGCCCCACCACCAACGATGCCCATAGTATCTGGTACTCCTG
GTACCTATGCTGTGCCCCAACTTGCAATGTGCCTTGGGTACCCCTCCTGCACCAGTTTACCTTACAG
CTCCAGCTGTGCCTATGGATCCCTTGGGTGGGGCCAGGGCTGCAACAGCCTCCCTTTGGTCTACTGTT
TCTCCACTCCGTTGTCTTCAAGTGTGCTTCCCTGAGGCTGTTCCCGGACCCCGTGGAAACCCAGTGGT
ATCCCGCTGGTCCCTGAAGATGTGCTTCCCTGGCCAGTGAATCCCTAAGCTCCGGCCGCGCCAG
CCCGCAGCTCCACAGTGAACCTACAAGCCGAGGCTCAGCCAGTGCCTGTATCTCCCGAGCCGAAA
CACAAGTGTCCACCTTGGTACAGAGTCCCGAGTCAAGGCTCCACCGACTTTGTCTACTGAGGGTGTAG
TTTTTGAGGAGTCTGTATCAGAGAGGCTAAAGTCTGAGACCCAGGAGAACAGACCAAAGGAGAAGCCAT
CTCTACAGCTATCAAGTCTGTCCCTGTGCCAAAGCAGAGCGCTGTTGCAAAGCTACCTGTGTCCATCCA
GCCCGTCAAGGAAGCTGTCTTCTGCCACCCACGTGCTCAGGGTCTGAGGATGTGGTGCAGGCGT
TCATCAGTGAGATTGGGATCGAAGCATCAGATCTGTGAGTCTGTTGGAGCAGTTTGAAGTGAAGC
CAAAAAGGAGTGTCTTCCCGGCTTCTGCTGACAGCTTGGCTGTAGGAACTCAGGCATTGACATTCCC
CAGGAGAAGAAGCCCTTAGACCGGTTACAAGCCCAAGAACTGGCCAACGTGGCAGGGCTCACCCCTCCAG
CTACCCCTCCCGACAGTTATGGAACCCCTGGCTGCTGTCTCACTCTTGGCGAAAGCCAAATCTCCTAA
ATCCACCGCCCAAGAGGGAACCTGAAGCCTGAAGGAATTACAGAGGCCAAACCTCCAGTACAGCCTGC
CTCCAAGAAGGGGCCACAGCCCTAGTCCAGTCCATGTGGGCTCTGGGGACCATGACTATTGTGTCCGAA
GCAGGACACCCCAAAAAGGATGCCTGCCTAGTCACTCAGAGGTGGGCTCCCGATGGAATGTCAAGCG
CCATCAGGACATCACCATCAAGCCTGTGTTGTCAATTGGGCTCAGTGCACCCCACTCCCATGCACGGCT
ACTTCCCAGGAGCCTCTGATCACAGGACTAGCGTTGAGCAGGCAGATCCTTACAGCGCTTGTTTTGCC
CATCCACCTTGTGTCTCCTGAGGCTTACCCTGCCGGAGTGAATGAACGCTAGGACTCCCCCTGAGCC
CTCAGACAAGCAGCAGTCAATGCCTGTTACCGAAAAGCCTGCAGATCAGTCAAGCCCTCAAGTAGGGGC
TGGCAAGGCCCGCTGGCCGAGTAGCCGTTCTGTGAGCTCTGGGTCCAGCCGGACAGTGAAGCGTCTCT
CGTCTCATCGGTGTCTTCTCATCCCGATCCCGTCCCGGTCCAGTCCAGTCTTCTCCCCCCCCAA
CAAGAGGTGGCGAAGGTCCAGTGCAGTTCCTCTGGACGGTCCAGAAGGTGTTTATCCTCTCTCTCTCC
TCCTTCTCTCTCATCGTGCAGTTCAGAAAGCCGGTCTCCCTCTGTGTCCCCTTGACAGGAGAAGTGACC
GGAGGCGGCGGTACAGCTCTTACCGTCAAATGACCATTACCAAAGGCAGAGAGTGTACAGAAGGAGCG
TGCAATAGAAGAGAGAAGGGTGGTCTTCAATGGGAAAATACCTGGCCGAATGACTCGGTCCGAGCTGAAA
CAGAGGTTCTGTGTTTTGGAGAAATTGAGGAGTGTACCATTATTTTCTGTGTTCAAGGTGACAATATG
GTTTCTGCACTTACCGTTATGCTGAAGAGGCATTTGCAGCATTGAGAGTGGCCACAAGTTGCGGCAGGC
AGACGAGCAGCCCTTTGATCTGCTTTGGGGCCGAAGGAGTCTGCAAGAGGAGTACTCTGACCTT
GACTCCAATCGGGAAGACTTTGATCCTGCTCCTGTAAGAGCAAATTCGATTCACTTGACTTTGATACAT
TGTTGAAACAGGCCCAGAAGAACCTCAGGAGG

ACGCGTACGCGGCCGCTCGAGCAGAACTCATCTCAGAAGAGGATCTGGCAGCAAATGATATCCTGGATT

ACAAGGATGACGACGATAAGGTTTAA

Protein Sequence:

>MR212061 representing BC066048
 Red=Cloning site Green=Tags(s)

```

MAARRRRDRVAPPPTGGPGDPGGVRRGGSWASRSQAPYGTGGSVSAEQVHEEGNDSSSFVSLRSLGPS
LREKDLMEELILQDETLLQSYMDASLISLIEDFGESRSLLEDQNEMSLTALTEILDNADSENLS
FDITPDSSELLVSPRESSSLHKLLNLSRTPPERDLITPIDPLGPSTGSSRVSGVEVPLADSPWDFSP
ETSSPKLPSWRPSRPRRWGQSPPPQQRSDGEEEEVAGFSGQMLAGKLDNSVNNVLDPFMHLACPEEE
TAEGADAPASAPGDESISSLSELVRAMHPYCLPNLTHLASLEGELEGQADADADELTPEGCVVLEIVG
AATTGGDDLEIPVVVRQIPSGSQSVLLDESLGSSPALQLLMPMESETEAAVPEVAPCPDEELPLSSACL
EPREIMESLTPKEPQSLPASASQGSQKVPKGRKKKKEQPTACVEACTRRLRSSRSGQSTVSAEVNSQA
GSSQKQPQEELQREAAALQSRGKPRAWARAWAAALEKTGSENLERSAGQDSPAEEADLDLCPKLETSQA
NPTLSLNDSAQADSMVPDVSVEGDSPAVGNAPGDQASSGTELVGSLVPGPNLTPVLADKKGIEPAVAIP
TSDNLSPADVLANTVAADPVNDPAPADPVLVKCRPTDPRRAAAAAAAAAAQGSRPQLQSDHPKVVSP
KDVVGLKVEGSTATTQEAKPRPLSLSEYRQRQRQTEAEDRNSQPPVVGKWPVSLPETTELADIPCL
VPSAPARKTAPQRSPIAVPETVSVGNSPVPTPEPSASKLMVSTHSEQVSSHEMPLAVRPPPPPLPSVSP
AGPIPSTVPAPLPPFPSPVPLLPSPGGHGVPRLLPPPPLQPPGLPVMRQMPDPYTYAPVPPWSCYP
SVSPPGYSCLPPTMPIVSGTPGTAVPPTCNVPWVPPAPVSPYSSSCAYGSLGWGPGQQPPFWSTV
SPPLSSVPTGRAVPPTVPEPSGDPAGPPEDVLPGPVTPSLSSGPASPAAPPVEPKPEAQPVPVSPQK
HKVSTLVQSPQIKAPPTLSTEGVFEESVSERLKSETQENRPKEKPISTAIKSVVPKQSAVAKLPAVHP
ARLRKLSFLPTPRAQGPEDVVQAFISEIGIEASDLSLLEQFEKSEAKKECPLPASADSLAVGNSGIDIP
QEKKPLDRLQAPELANVAGLTPPATPPHQLWKPLAAVSLLAKAKSPKSTAQEGTLKPEGITEAKPPATA
LQEGAHSPSPVHVSGDHDYCVSRTPPKRMPALVISEVGSRWVVKRHQDITIKPVLSLGSAAPPLPCTA
TSQEPLDHRTSVEQADPSAPCFAPSTLLSPEASPCRSEMNARTPEPSDKQSMRCYRKACRSVSPSSRG
WQGRGRSSRSVSSGSSRTSEASSSSSVSSSRSRSRSRSPFNKRWRSSCSSSGRSRRCSSSSSS
SSSSSSCSSRSRSPVSPCRRSDRRRRYSSYRANDHYQRQVRLQKERAIEERRVVFIGKIPGRMTRSELK
QRFVVFGEIEECTIHFRVQGDNYGFVYRYAAEAFAAIESGHKLRQADEQPFDLFCGGRRQFCRKSYS
DLDSNREDFDPAPVKSKFDSLDFDILLKQAQKNLRR
    
```

TRTRPLEQKLISEEDLAANDILDYKDDDDKV

Chromatograms:

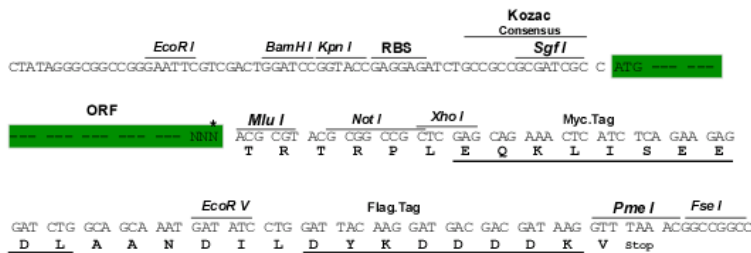
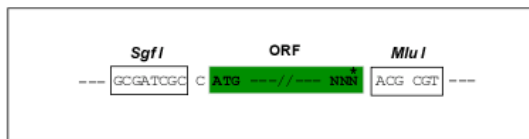
https://cdn.origene.com/chromatograms/mm9081_f09.zip

Restriction Sites:

SgfI-MluI

Cloning Scheme:

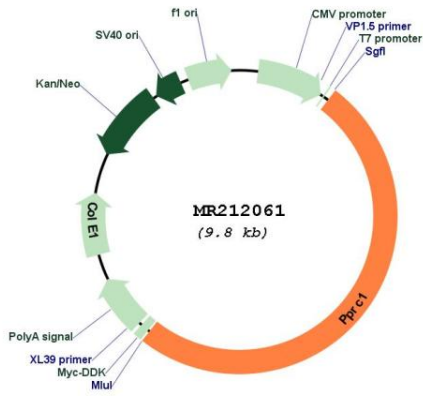
Cloning sites used for ORF Shuttling:



* The last codon before the Stop codon of the ORF

ACCN:	BC066048
ORF Size:	4932 bp
OTI Disclaimer:	The molecular sequence of this clone aligns with the gene accession number as a point of reference only. However, individual transcript sequences of the same gene can differ through naturally occurring variations (e.g. polymorphisms), each with its own valid existence. This clone is substantially in agreement with the reference, but a complete review of all prevailing variants is recommended prior to use. More info
OTI Annotation:	This clone was engineered to express the complete ORF with an expression tag. Expression varies depending on the nature of the gene.
Components:	The ORF clone is ion-exchange column purified and shipped in a 2D barcoded Matrix tube containing 10ug of transfection-ready, dried plasmid DNA (reconstitute with 100 ul of water).
Reconstitution Method:	<ol style="list-style-type: none">1. Centrifuge at 5,000xg for 5min.2. Carefully open the tube and add 100ul of sterile water to dissolve the DNA.3. Close the tube and incubate for 10 minutes at room temperature.4. Briefly vortex the tube and then do a quick spin (less than 5000xg) to concentrate the liquid at the bottom.5. Store the suspended plasmid at -20°C. The DNA is stable for at least one year from date of shipping when stored at -20°C.
RefSeq:	BC066048.1
RefSeq Size:	5117 bp
RefSeq ORF:	4934 bp
Locus ID:	226169
Cytogenetics:	19 C3
MW:	175.1 kDa
Gene Summary:	Acts as a coactivator during transcriptional activation of nuclear genes related to mitochondrial biogenesis and cell growth. Involved in the transcription coactivation of CREB and NRF1 target genes (By similarity).[UniProtKB/Swiss-Prot Function]

Product images:



Circular map for MR212061