

Product datasheet for MR212053

Lrp6 (NM_008514) Mouse Tagged ORF Clone

Product data:

Product Type: Expression Plasmids
Product Name: Lrp6 (NM_008514) Mouse Tagged ORF Clone
Tag: Myc-DDK
Symbol: Lrp6
Synonyms: C030016K15Rik; Cd; Gw; ska26; ska; skax26
Mammalian Cell Selection: Neomycin
Vector: pCMV6-Entry (PS100001)
E. coli Selection: Kanamycin (25 ug/mL)
ORF Nucleotide Sequence: >MR212053 representing NM_008514
 Red=Cloning site Blue=ORF Green=Tags(s)

TTTTGTAATACGACTCACTATAGGGCGGCCGGAATTCGTCGACTGGATCCGGTACCGAGGAGATCTGCC
 GCC**CGATCGCC**

ATGGGGCCGTGCTGAGGAGCCTCTGGCCTGCAGTTCTGCGTGCTGCTGAGAGCGGCCCTTTGTTGC
 TTTATGCAAACAGACGGGACTTGAGATTGGTTGATGCTACAAATGGCAAAGAGAATGCAACGATTGTAGT
 TGGAGGCTTGGAGGATGCAGCTGCGGTGGACTTTGTGTTGGTCATGGCTTGATACTGGAGTGATGTC
 AGCGAAGAAGCCATTAACGAACAGAATTAACAAAAGTAAAGTGTACAGAATGTTGTTGTTCTGGAT
 TATTGTCCCGGATGGGCTGGCATGTGATTGGCTTGGAGAAAAATGACTGGACAGATTCTGAAACTAA
 TCGTATTGAAGTTTCTAATTTAGATGGATCTTTACGAAAAGTTTTATTTGGCAAGAGTTGGATCAACCC
 AGAGCTATTGCCTTAGATCCATCAAGTGGTTCATGACTGGACAGACTGGGAGAAAGTGCCAAAGATAG
 AACGTGCTGGGATGGATGGCTCAAGTCGCTTCGTTATAATAAACACAGAGATTTACTGGCCAAACGGACT
 GACTCTGGACTATCAGGAGCGGAAGCTTTACTGGGCCGATGCAAAACTTAATTTTCATCCATAAATCAAAC
 CTGGATGGAACAAACCGGCAGGCAGTGGTTAAAGGTTCCCTTCCACATCCTTTGCGCTTGACGTTATTTG
 AGGACACATTGTACTGGACTGACTGGAATACACACTCTATTTGGCTTGAACAAATATACTGGCGAGGG
 TCTGCGTAAAATCATTCTAACATCTTCTCCCATGGATACATGCTTTCAGCCAACAGAGGCAGCCA
 AATGCTACAAATCCATGTGGAATTGATAATGGTGGTTGTTCCCATTTGTGTTGATGCTCCAGTCAAGC
 CTTTTATCAGTGTGCTTGCCCAACTGGGTCAAGCTGCTGGAGAATGGAAGACCTGCAAAGATGGTGC
 CACTGAACTATTGCTGTTAGCCCGACGGACAGACTTGAGGCGAATTTCTTTGGATACACCCGATTTTACT
 GACATTGTTCTGCAGTTAGAAGATACCGGCATGCCATTGCCATAGACTATGACCCTGTAGAAGGCTACA
 TACTGGACGGATGACGAAGTGAGGGCTATCCGTCGCTCCTTCATAGATGGATCTGGCAGTCAGTTGT
 GGTACCGCCAGATTGCTCATCCTGATGGTATTGCTGTTGACTGGGTTGCAAGGAACCTGACTGGACA
 GACTGGCACGGATCGTATAGAAGTGACAAGGCTCAATGGGACCATGAGGAAGATCTTGATTTAGAGG
 ACTTAGAGGAGCCCCGGCTATCGTGTAGATCCCATGGTTGGTACATGATTGGACAGACTGGGAGAA
 AATCCCAAAAATAGAGCGAGCTGCTCTGGACGGATCTGACCGAGTAGTCTTGCAACACTCCCTTGGT



[View online »](#)

TGGCAAACGGCTTAGCCCTGGATTATGATGAAGGCACAATATACTGGGGAGATGCCAAAACAGACAAA
 TTGAGGTTATGAATACCGATGGCACCGGGAGGCGAGTGCTGGTGAAGACAAGATCCCTCACATATTTGG
 GTTTACCTTGCTGGGTGACTATGTTTACTGGACTGACTGGCAGAGGGCGGAGCATCGAGAGAGTACACAAA
 CGGAGCGCAGAGAGGGGAGGTCATCATAGATCAGCTGCCAGACCTCATGGGACTGAAGGCCACAAGTGTC
 ACAGAATCATTGGTTCTAACCCCTGTGCTGAGGACAATGGAGGATGTAGCCATCTTTGCCTGTACAGGCC
 TCAGGGGCTTCGATGCGCCTGTCCCATTGGCTTTGAGCTCATCAGTGACATGAAGACATGCATTGTCCCC
 GAGGCTTTCCTTCTGTTCTCGAGGAGAGCGGATATCAGACGCATATCTTTGAAAACAACAACAATG
 TGGCCATTCCCTCTCACTGGTGTCAAAGAAGCCTCTGCTTTGGATTTTGATGTCACAGACAACAGGATTTA
 CTGGACTGATATCACTGAAGACTATTAGCAGAGCCTTTATGAATGGCAGTGCCTGGAACATGTGGTA
 GAGTTTGGCTTAGATTATCCAGAAGGCATGGCAGTGGACTGGCTTGGGAAGAACTTATACTGGGCAGACA
 CAGGAACAAATCGCATTGAGGTATCGAAGTTGGACGGACAGCACCAGAGTTTTGGTATGGAAAGACCT
 TGACAGTCTCGAGCTCTGGCACTGGATCTGCTGAAGGGTTTATGTATTGGACTGAGTGGGGAGGCAAG
 CCTAAGATTGACAGGGCTGCTATGGATGGAAGTGAACGCACTACATTAGTTCCAATGTAGGCCGAGCAA
 ATGGTCTCACCATCGACTATGCTAAAAGGCGGCTTACTGGACAGACCTGGACACTAACCTAATAGAATC
 CTCAGATATGCTCGGACTCAACCGTGAAGTTATAGCAGATGACTGCCTCATCTTTTGGCTTAACTCAG
 TACCAAGATTACATCTACTGGACAGACTGGAGCCGACGACGATTGAACGTGCCAAAACAAACCAGTGGCC
 AAAACCGCACCATCATCCAGGGCATTGGACTATGTGATGGACATCCTGGTCTTCCACTTTCCTCCGGCA
 GGCAGGGTGAATGAGTGTGCCTCCAGCAACGGGCACTGCTCCCACCTCTGCTTGGCTGTGCCCGTCGGA
 GGTTTTGTGTGGATGCCCTGCCCACTACTCCCTGAATGCTGACAACAGGACCTGCAGTGTCCCACCA
 CCTTCTGCTCTTCAGTCAGAAGAGCGCCATCAACCGCATGGTGATTGATGAACAACAGAGCCCTGACAT
 CATCCTTCTATCCACAGCCTTCGGAACGTCCGGGCCATTGACTATGACCCTTTGGACAAGCAGCTCTAC
 TGGATTGACTCTGACAAAACCTCATACGAAAGGCACATGAAGATGGTGGCCAGGGTTTTAATGTAGTTG
 CAACTCAGTCGCAAAATCAGAACCTTGAATACAGCCCTATGATCTCAGCATTGATTTATAGCCCTTGA
 CATCTACTGGACCTGTGAAGCTACCAATGTCATTGATGTGACGAGATTAGATGGACGATCAGTTGGAGTG
 GTTCTAAAAGGCGAGCAAGACAGACCTCGAGCCATTGTGGTAAACCCCGAAAAGGGTATATGATTTTA
 CCAATCTTCAGGAAAGATCTCCTAAAATTGAACGGGCTGCATTGGATGGTACAGAACGAGAGGCTCCTCT
 TTTCAAGTGGCTTAAAGTAAACCAATTGCTTTGGCTCTTGATAGCAAGCTGGGCAAGCTCTTCTGGGCTGAC
 TCAGATCTCCGGCGAATTGAAAGCAGTGATCTCTCAGGTGCCAACAGGATCGTGTAGAAGACTCTAATA
 TATTACAGCCTGTGGCCTGACCCTGTTGAAAACCTGGCTCTATTGGATTGATAAACAGCAGCAGATGAT
 TGAAAAAATTGACATGACTGGTTCGAGAAGGAAGAACCAAGGTCCAGGCTCGAATTGCTCAGTGAGTGAC
 ATCCATGCAGTAAAGGAGCTGAACCTTCAGGAGTACAGACAGCACCTTGTGCCAGGATAATGGTGGCT
 GTTCACATATCTGCCTTGTAAAAGGAGATGGTACGACAAGATGCTCCTGCCCATGCACTTAGTTCTGCT
 TCAGGATGAGCTGTCTGTGGAGAGCCTCCAACGTGTTCTCCTCAGCAGTTTACCTGCTTCACTGGGGAC
 ATTGACTGCATCCCTGTGGCTTGGCGGTGTGATGGGTTCACTGAGTGCGAAGACCACAGCGATGAACTCA
 ATTGTCCCGTGTGCTCAGAGTCTCAGTTCAGTGTGCCAGCGGCAGTGCATTGATGGTGGCCTTCGATG
 CAATGGCGATGCGAAGTCCAGGACAAAATCAGATGAGAAGAACTGTGAAGTGCTTTGTTAATTGATCAG
 TTCCGCTGTGCCAATGGTCAGTGCCTGGAAAGCACAAGAAATGTGACCACAGTGGACTGCAGTGACA
 GATCTGACGAGCTGGACTGTTATCCAACGTGAGGAGCCAGCACCAAGCCACCAACAGTTGGTTCTGT
 TATTGGAGTAATTGTACCATTTTTGTGCTGGAACCATATACTTTATCTGCCAGAGGATGCTGTGTCCT
 CGTATGAAGGGAGACGGGAGACCATGACTAACGACTATGTGGTTCACAGCCCGGCTGTGTGCCCTTGT
 GTTATGTTCTCACCAGCTCTCTCTGGATCTCTTCCAGGAATGTCTCGAGGCAAAATCAATGATCAG
 TTCCCTCAGTATCATGGGGGAAGCAGTGGGCCCCCTATGATCGAGCGCACGTACGGGAGCCTCCTCA
 AGCAGTCTTCCAGTACCAAAGGCATTACTTCCCTGCAATTTTGAACCCACCACCATCGCTGCCACAG
 AAAGATCCATTATACCATGGAATTTGGTTATTCTTCCAACAGTCTTCCACACATAGGTCTACAGCTA
 TAGGCCGTACAGTACCAGCCTTTGCACCGCCACCACCCCTGCAGCACTGATGTCTGTGACAGTGAC
 TATGCTCTAGCCGGAGGATGACCTCGGTGGCAACAGCCAAGGGCTACACCAGTACGTTGAACTATGACT
 CAGAACCTGTGCCCCACCGCCACACCCCGAAGCCAGTACTTGTGAGCGGAGGAGAACTATGAAAGCTG
 CCCCCCTTCCCACATACAGGAGAGGAGTACTCCACCACCTTACCCGCCACCACCTCCCCCTGCAGC
 GACTCCTCC

ACGCGTACGCGGCCGCTCGAGCAGAACTCATCTCAGAAGAGGATCTGGCAGCAAATGATATCCTGGATT
 ACAAGGATGACGACGATAAGGTTTAA

Protein Sequence: >MR212053 representing NM_008514
 Red=Cloning site Green=Tags(s)

MGAVLRSLACSFVLLRAAPLLLYANRRDLRLVDATNGKENATIVVGGLEDAAAVDFVFGHGLIYWSDV
 SEEAIKRTEFNKTESVQNVVVSGLLSPDGLACDWLGEKLYWTDSETNRIEVSNDGSLRKVLFWQELDQP
 RAIALDPSSGFMWTDWGEVPKIERAGMDGSSRFVIINTEIYWPNGLLDYQERKLYWADAKLNF IHKSN
 LDGTNRQAVVKGSLPHPFALTLFEDTLYWTDWNTHSILACNKYTGEGLEIHSNIFSPMDIHAFSQQRQP
 NATNPGIDNNGCSHLCLMSPVKPFYQCACPTGVKLENGKTKDGAPELLLLARRDLRRIISLDPDFT
 DIVLQLEDIRHAIADIDYDPVEGYIYWTDDEVRAIRRSFIDGSGSQFVVTQAIAHPDGIADVVARNLWY
 DTGTDRIEVRTLNMTMRKILISEDLEEPRAIVLDPVMGYWTDWGEIPKIERAALDGSDRVVLVNTSLG
 WPNGLALDYDEGTIYWGDAKTDKIEVMNTDGTGRRVLVEDKIPHIFGFTLLGDYVYWTDWQRRSIEVHK
 RSAEREVIDQLPDLMLKATSVHRIIGSNPCAEDNNGCSHLCLYRQGLRCACPIGFELISDMKTCIVP
 EAFLLFSRRADIRRIISLETNNNNVAIPLTGVEASALDFDVTNRIYWTDISLKTISRAFMNGSALEHVV
 EFGLDYPEGMAVDWLGNLYWADTGTNRIEVSKLQHRQVYLVKDLDSPRALALDPAEGFMWTEWGGK
 PKIDRAAMDGSERTTLVNVGRANGLTIDYAKRRLYWTDLDTNLIESSDMLGLNREVIADDLPHFGLTQ
 YQDIYIYWTDWSRRSIEERANKTSGQNRTIIQGHLDYVMDILVFHSSRQAGWNECASSNGHCSHLCLAVPVG
 GFVCGCPAHYSLNADNRTCASPTTFLFSQKSAINRMVIDEQQSPDIILPIHSLRNVAIDYDPLDKQLY
 WIDSRQNSIRKAHEDGGQGFNVVANSVANQNLEIQPYDLSIDIYSRYIYWTCEATNVIDVTRLDGRSVGV
 VLKGEQDRPRAIVVNPEKGYMYFTNLQERSPKIERAALDGTEREVLFFSGLSKPIALALDSKLGKLFWAD
 SDLRRIESSDLSGANRIVLEDSNILQPVGLTVFENWLWIDKQQQMIEKIDMTGREGRTKQVARIQLSD
 IHAVKELNLQEYRQHPCAQDNGGCSHICLVKGDGTRCSCPMHLVLLQDELSCGEPPTCSPQOFTCFDGD
 IDCIPVAWRCDGFTECEDHSDLELNCPCVSESQFQCASGQCIDGALRCNGDANCQDKSDEKNCEVLCIDQ
 FRCANGQCVGKHKKCDHSVDCSDRSDELDCYPTTEEPAPQATNTVGSVIGVIVTIFVSGTIYFICQMLCP
 RMKGDGETMTNDYVHSPASVPLGYVPHPSLGSGLPGMSRGKSMISLSSIMGGSSGPPYDRAHVGTASS
 SSSSSTKGTYPAILNPPSPATERSHYTMEFGYSSNSPSTHRSYSYRPSYRHFAPPTTPCSTDVCDSD
 YAPSRMTSVATAKGYTSDVNYDSEVPVPPPTPRSQYLSAEENYESCPPSPYTERSYSHLLYPPPPSPCT
 DSS

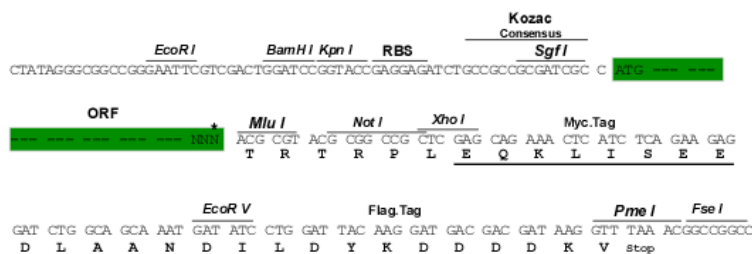
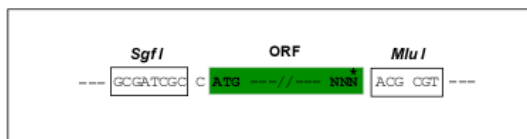
TRTRPLEQKLISEEDLAANDILDYKDDDDKV

Restriction Sites:

Sgfl-MluI

Cloning Scheme:

Cloning sites used for ORF Shuttling:



* The last codon before the Stop codon of the ORF

ACCN:

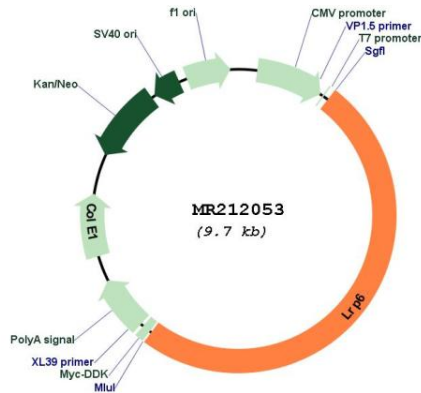
NM_008514

ORF Size:	4839 bp
OTI Disclaimer:	<p>Due to the inherent nature of this plasmid, standard methods to replicate additional amounts of DNA in E. coli are highly likely to result in mutations and/or rearrangements. Therefore, OriGene does not guarantee the capability to replicate this plasmid DNA. Additional amounts of DNA can be purchased from OriGene with batch-specific, full-sequence verification at a reduced cost. Please contact our customer care team at custsupport@origene.com or by calling 301.340.3188 option 3 for pricing and delivery.</p> <p>The molecular sequence of this clone aligns with the gene accession number as a point of reference only. However, individual transcript sequences of the same gene can differ through naturally occurring variations (e.g. polymorphisms), each with its own valid existence. This clone is substantially in agreement with the reference, but a complete review of all prevailing variants is recommended prior to use. More info</p>
OTI Annotation:	This clone was engineered to express the complete ORF with an expression tag. Expression varies depending on the nature of the gene.
Components:	The ORF clone is ion-exchange column purified and shipped in a 2D barcoded Matrix tube containing 10ug of transfection-ready, dried plasmid DNA (reconstitute with 100 ul of water).
Reconstitution Method:	<ol style="list-style-type: none"> 1. Centrifuge at 5,000xg for 5min. 2. Carefully open the tube and add 100ul of sterile water to dissolve the DNA. 3. Close the tube and incubate for 10 minutes at room temperature. 4. Briefly vortex the tube and then do a quick spin (less than 5000xg) to concentrate the liquid at the bottom. 5. Store the suspended plasmid at -20°C. The DNA is stable for at least one year from date of shipping when stored at -20°C.
RefSeq:	NM_008514.4, NP_032540.2
RefSeq Size:	9368 bp
RefSeq ORF:	4842 bp
Locus ID:	16974
UniProt ID:	O88572
Cytogenetics:	6 65.37 cM
MW:	180.8 kDa

Gene Summary:

Component of the Wnt-Fzd-LRP5-LRP6 complex that triggers beta-catenin signaling through inducing aggregation of receptor-ligand complexes into ribosome-sized signalsomes. Cell-surface coreceptor of Wnt/beta-catenin signaling, which plays a pivotal role in bone formation. The Wnt-induced Fzd/LRP6 coreceptor complex recruits DVL1 polymers to the plasma membrane which, in turn, recruits the AXIN1/GSK3B-complex to the cell surface promoting the formation of signalsomes and inhibiting AXIN1/GSK3-mediated phosphorylation and destruction of beta-catenin. Required for posterior patterning of the epiblast during gastrulation (By similarity).[UniProtKB/Swiss-Prot Function]

Product images:



Circular map for MR212053