

Product datasheet for **MR212047**

Myh2 (BC008538) Mouse Tagged ORF Clone

Product data:

Product Type:	Expression Plasmids
Product Name:	Myh2 (BC008538) Mouse Tagged ORF Clone
Tag:	Myc-DDK
Symbol:	Myh2
Synonyms:	Myh2a, MHC2A, MyHC-IIa
Vector:	pCMV6-Entry (PS100001)
E. coli Selection:	Kanamycin (25 ug/mL)
Cell Selection:	Neomycin
ORF Nucleotide Sequence:	>MR212047 representing BC008538 Red=Cloning site Blue=ORF Green=Tags(s)

TTTTGTAATACGACTCACTATAGGGCGCCGGAATTCGTCGACTGGATCCGGTACCGAGGAGATCTGCC
GCC**CGGATCGCC**

ATGAGCTCCGACGCCGAGATGGCCGTTTTCGGGGAGGCTGCCCTTACCTCCGGAAGTCCGAAAAGGAGC
GAATCGAGGCCAGAATAGGCCTTTTGATGCCAAAACATCTGTCTTTGTGGCGGAGCCAAAGGAATCCTT
TGTCAAAGGAACCATTCAGAGCAAAGATGCAGGAAAAGTGACTGTGAAAACAGAAGCAGGAGCGACCTG
ACTGTGAAAGAAGACCAGATCTTCCCCATGAACCCCTCCAAGTACGACAAGATCGAGGACATGGCCATGA
TGACCCACCTGCACGAGCCCGCTGTGCTGTACAACCTCAAAGAGCGTTATGCAGCCTGGATGATCTACAC
CTACTCAGGCCTCTTCTGTGCACCGTCAACCTTACAAATGGCTGCCGGTGTACAACCCCGAGGTGGTG
GCAGCCTATCGAGGCAAAAAGCGCCAGGAGGCCCGCCACATCTTCTCCATCTCTGATAACGCCTACC
AGTTCATGCTAACAGACAGGGAGAATCAGTCAATCCTGATCACCAGGAGAAATCCGGGGCCGGGAAGACTGT
GAACACGAAGCGTGTCAATCCAGTACTTTGCAACAATTGCAGTCACTGGGGACAAGAAGAAGGAGGAGGCA
ACTTCTGGCAAAATGCAGGGGACACTGGAGGACCAATCATCAGCGCCAACCCCTGTGGAGCCCTTTG
GGACGCCAAGACCGTGAGGAACGACAACCTCGTCTCGTTTGGTAAATTCATCAGGATCCACTTTGGC
TACGGGGAAACTGGCATCTGCCGACATCGAGACCTATCTGCTAGAGAAGTCCCGGTCACTTCCAGCCTT
AAGCGGAAAGAAGCTACCATATATTTTATCAGATCACATCCAACAAGAAGCCAGAAGTATCGAAATGC
TGCTGATCACCACGAACCCATATGATTACCCGTTTGTGAGCCAGGGAGAGATCAGTGTGGCCAGCATTGA
TGACCAGGAAGAGCTGATGGCCACTGATAGTGCTATCGACATTTTGGGCTTTACAAATGATGAAAAAGTC
TCCATCTATAAGCTCACCGTGTGTGATGCATTATGGGAACATGAAGTTCAAGCAGAAGCAGCGGGAGG
AGCAGGCAGAGCCAGATGGCACCAGTGTGCTGACAAGGCTGCCTATCTCAGGGTCTGAECTGTGCTGA
CCTGCTCAAAGCCCTCTGCTACCCAGGGTCAAGGTGGCAATGAGTATGTCACCAAAGGCCAGACTGTC
GAGCAGGTGACCAATGCTGTGGGTGCCCTGGCCAAGGCCATGTATGAGAAGATGTTCTGTGGATGGTCA
CCGCATCAACCAGCAGCTGGACACCAAGCAGCCCGGCAGTACTTCATCGGGGTCTGGACATCGCTGG
CTTTGAGATCTTTGATTTCAACAGCTTGGAAACAGCTGTGCATCAACTTACCAATGAGAACTGCAACAG
TTTTTCAACCACCACATGTTCTGTGCTGGAGCAGGAGGAATACAAGAAGGAGGGCATCGAGTGGACCTTCA



[View online »](#)

TCGACTTCGGGATGGACCTGGCAGCCTGCATCGAGCTCATCGAGAAGCCGATGGGCATCTTCTCCATCCT
GGAAGAGGAGTGCATGTTCCCTAAGGCGACAGACACCTCCTTCAAGAACAAGCTGTATGAGCAGCATCTT
GGAAAGTCTGCCAACTTCCAGAAGCCTAAGGTGGTCAAAGGCAAGGCCGAAGCCACTTCTCCCTCATCC
ACTATGCGGGCACCGTGGATTACAACATCACTGGCTGGCTGGACAAGAACAAGGACCCACTGAACGAGAC
CGTGGTGGGGCTGTACCAGAAGTCTTCAAGTAAACTCTGGCTTATCTCTTCTCTGGGGCACAACCTGT
GAAGCAGAGGCAAGTGTGGTGGAGCTGCCAAGAAAGGTGCCAAGAAGAAGGGGTCTCTTTTCAGACCG
TGTTGCCCTGTTTCAGAGAGAATTTGAACAAGCTGATGACCAACCTCAGGAGCACCCATCCTCATTTTGT
GAGGTGTATCATCCCAATGAAACCAAGACTCCCGGTGCCATGGAGCACGAACCTGTCCTGCACCAGCTG
AGGTGTAATGGGGTGTGGAGGGCATCCGCATCTGCAGGAAGGGCTTCCCCAGCAGGATCCTCTATGCAG
ACTTCAAGCAGAGATACAAAGTGTAAACGCAAGTGCCATTCTGAGGGTCACTACATCGACAGCAAGAA
GGCTTCTGAGAAGCTCCTGGGCTCCATTGACATTGACCACACTCAGTATAAGTTTGGTCACACCAAGGTC
TTTTTCAAAGCTGGTCTTCTGGGCTCCTAGAGGAGATGAGAGATGACAAGTTGGCCAGCTTATTACCC
GGACCCAGGCTATGTGCAGAGGGTCTTGGCGAGAGTGGAGTACCAGAAGATGGTGGAGAGAAGGGAGTC
CATCTTCTGCATCCAGTACAACATCCGCGCTTTCATGAACGTCAAGCACTGGCCCTGGATGAAACTTTC
TTCAAGATCAAGCCCTGCTGAAGAGCGCAGAGACCGAGAAGGAGATGGCCACCTGAAGGAGGAGTTCC
AGAAAACCAAAGATGACCTTGCCAAAGTCAAGAGCAAGAGGAAGGAACTTGAAGAAAAGATGGTGTCCCT
CTTGAAAGAAAAAATGACTTGCAACTTCAAGTTCAGGCTGAAGCTGAAGGCTTGGCCGATGCAGAGGAG
CGATGCGACAGCTGATCAAAACCAAAATCCAGCTGGAGGCCAAAATCAAAGAGGTGACCCAGAGGGCCG
AGGATGAGGAGGAGATCAACGCAGAGCTCACGGCCAAGAAGAGGAAGCTGGAGGACGAGTGTCTCAGAGCT
GAAGAAGGACATCGATGACCTTGAAGTCAACTGGCCAAGGTTGAGAAAGAGAAGCATGCCACGGAGAAT
AAGGTGAAAAACCTGACAGAGGAGATGGCAGGCTGGATGAAACCATCGCAAGCTGACCAAGGAGAAGA
AGGCCCTCAGGAGGCCACCAGCAGACCTGGATGACCTGCAGGCAGAGGAGGACAAAGTCAACACCTTC
GACCAAGCCAAAATCAAGCTGGAACAGCAAGTGGATGATCTTGAAGGGTCTTGGAGCAAGAAAAGAAA
CTTCGCATGGACCTAGAAGAGCCAAGAGAAAACCTTGGGGCGACTTGAAGTTAGCCAGGAGTCCATCA
TGGACATTGAAAATGAGAAAACAGCAGCTTGTGAAGGCTCAAAAAGAAAAGATTTGAAATGAGCAATCT
GCAGAGCAAGATTGAGGACGAGCAGGCCATCGGCATTGAGCTGCAGAAGAAGATCAAGGAGTTGCAGGCC
CGCATCGAGGAGCTGGAGGAGGAAATCGAGGCAGAGCGGGCTCCAGGGCCAAAGCAGAGAAGCAGCGCT
CTGACCTCTCCCGGAACTGGAGGAGATCAGCGAGAGGCTGGAAGAAGCCGGGGGGCCACTTCAGCCCA
GATCGAGATGAACAAGAAGAGAGAGGCTGAGTTCCAGAAAATGCGCAGGGACCTGGAGGAGGCCACGCTG
CAGCATGAAGCCACAGCAGCCACCCTGAGGAAGAAGCACGCGGACAGCGTGGCTGAGCTCGGGGAGCAGA
TCGACAACCTGCAGCGGGTGAAGCAGAAGCTGGAGAAGGAGAAGCGAGATGAAGATGGAGATCGATGA
TCTTGCCAGTAATGTAGAGACAGTGTCTAAGGCCAAGGGAAACCTCGAGAAGATGTGCCGACCCCTGGAG
GACCAGGTGAGTGAAGTCAAGGAGGAGGAACAGCAGCGACTGATCAACGACCTGACAAGCCAGA
GAGGACGACTGCAGACCGAATCCGGTGAATTTCCAGGCAGCTTGTGAGAAGGAAGCGCTGGTATCTCA
GTTATCAAGGGGGAAGCAAGCGTTCCTCAACAGATTGAGGAGCTGAAGAGGCAGCTTGAAGAGGAAGTA
AAGGCCAAGAACGCGCTGGCCACGCCCTGCAGTCTCCCGCCATGACTGTGACCTGCTGCGGGAACAGT
ACGAGGAGGAGCAGGAGTCTAAGGCTGAAGTGCAGAGGGCGCTGTCCAAGGCCAACAGCGAGGTGGCCCA
GTGGAGGACCAATATGAGACGGATGCCATCCAGCGCACGGAGGAGCTGGAGGAGCCAAAGAAGAAGCTG
GCTCAGCGTCTGCAGGCGCCGAGGAGCACGTAGAAGCCGTGAACGCCAAGTGCCTTCCCTGGAGAAGA
CGAAGCAGCGGCTGCAGAACGAGGTGGAGGACCTCATGCTGGATGTGGAGAGGACCAATGCCGCTGCGC
CGCCCTGGACAAGAAGCAGAGAAAACCTCGACAAGATCCTGGCAGAGTGGAAAGCAGAAGTATGAGGAAACC
CACGCTGAGCTTGAAGCATCCCAGAAGGAGGCCGCTCCCTGGGCACTGAGCTCTTCAAGATGAAGAATG
CCTACGAGGAGTCTTGGATCAGCTAGAAAACCTGAAGCGAGAGAATAAGAAGTACAGCAGGAGATTTTC
TGACCTCACGGAACAGATTGCAGAAGGAGGAAAGCGCATCCACGAAGTGGAGAAAATTAAGAAAACAGTC
GAACAAGAGAAGTGTGAAGTTCAGGCTGCTCTAGAAGAAGCAGAGGCATCTCTGGAGCACGAGGAGGAA
AGATCCTGCGCATCCAGCTGGAGCTGAACCAAGTCAAGTCTGAGATCGACAGGAAGCCCGCAATGCAGAA
GAGAAAGCCAAGAAGCCATCACTGATGCCGCA

ACGCGTACGCGGCGCTCGAGCAGAAAACCTCATCTCAGAAGAGGATCTGGCAGCAAATGATATCCTGGATT
ACAAGGATGACGACGATAAGGTTTAA

Protein Sequence: >MR212047 representing BC008538
 Red=Cloning site Green=Tags(s)

MSSDAEMAVFGEAAPYLKSEKERIEAQNRPDAKTSVFVAEPKESFVKGTIQSKDAGKVTVKTEAGATL
 TVKEDQIFPMNPKYDKIEDMAMMTHLHEPAVL YNLKERYAAWMIYTYSGLFCVTVNPYKWLVPYNPEVV
 AAYRGKKRQEAPPHIFSISDNAYQFMLTDRENQSILITGESGAGKTVNTRKVIQYFATIIVTGDKKKEEA
 TSGMKQGTLEDQIISANPLLEAFGNAKTVRNDNSRFGKFIIRIHFGTTGKLASADIETYLLEKSRVTFQL
 KAERSYHIFYQITSNKKPELIEMLLITNPNYDYPFVSQGEISVASIDDQEELMATDSAIDILGFTNDEKV
 SIYKLTGAVMHYGNMKFKQKQREEQAEPDGEVADKAAAYLQGLNSADLLKALCYPRVKVGNVEYVTKGQTV
 EQVTNAV GALAKAMYKMF LWMVTRINQLDTKQPRQYFIGVLDIAGFEIFDFNSLEQLCINFTNEKLQQ
 FFNHMFVLEQEEYKKEGIEWTFIDFGMDLAACIELIEKPMGIFSILEEEMFPKATDTSFKNKLYEQHL
 GKSANFQKPKVVKGAEAHFSLIHYAGTVDYNITGWLDKNKDPLNETVVGLYQKSSVKTLAYLFSGAQTA
 EAEASSGGAAKKGAKKGSFQTVSALFRENLNKLMNLRSTHPHFVRCIIPNETKTPGAMEHELVLHQL
 RCNGVLEGIKRGKGFPSRILYADFKQRYKVLNASAIPEGQYIDSKKASEKLLGSDIDHTQYKFGHTKV
 FFKAGLLGLLEMRDDKLAQLITRTQAMCRGFLARVEYQK MVERRESIFCIQYNIRAFMNVKHPWPKLF
 FKIKPLLKSAETEKEMATMKEEFQKTKDDLAKSEAKRKELEEKMVSLKKEKNDLQLQVQAEAGLADAEE
 RCDQLIKTKIQLEAKIKEVTERAEDEEEINAELTAKKRKLEDECESELKKDIDDELTLAKVEKEKHATEN
 KYKNLTEEMAGLDEIAKLTKKALQEAHQTLDDLQAEEDKVNTLTKAKIKLEQQVDDLEGSLEQEKK
 LRMDLERAKRKEGLKLAQESIMDIENKQQLDERLKKKEFEMSNLQSKIEDEQAIGIQLQKKIKELQA
 RIEEELIEAERASRAKAEKQSDLSRELEEISERLEEAGGATSAQIEMNKKREAEFQKMRDLLEATL
 QHEATAATLRKKHADSVAELGEQIDNLQRVKQLEKEKSEMMEIDDLASNVETVSKAGNLEKMCRTLE
 DQVSELKSKEEQRLINDLTSQRGRLQTESGEFSRQLDEKEALVSQLSRGKQAF TQIQIELKRQLEEEV
 KAKNALAHALQSSRHDCDLLREQYEEQESKAELQRALSKANSEVAQWRTKYETDAIQRTEELEAKKKL
 AQR LQAEEHVEAVNAKASLEKTKRQLQNEVDLMLDVERTNAACAALDKKQRNFDKILAEWKQKYEET
 HAELEASQKEARSLGTELFKMNAYEESLDQLETLKRENKLNQQEISDLTEQIAEGGKRIHELEKIKKQV
 EQEKCELQAAL EEAASLEHEEGKILRIQLELNQVKSEIDRKPAMQKRKPRKPSLMPP

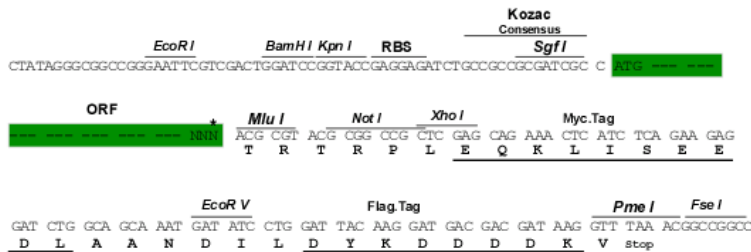
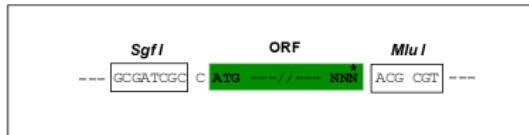
TRTRPLEQKLISEEDLAANDILDYKDDDDKV

Restriction Sites:

SgfI-MluI

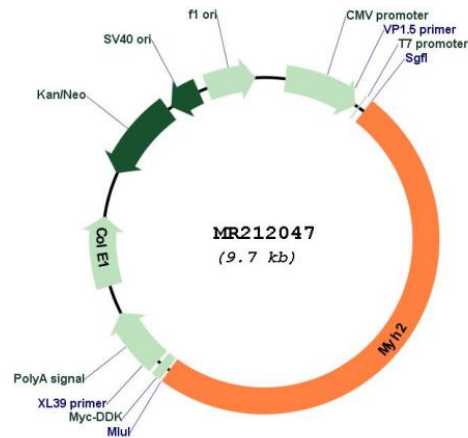
Cloning Scheme:

Cloning sites used for ORF Shuttling:



* The last codon before the Stop codon of the ORF

Plasmid Map:



ACCN: BC008538

ORF Size: 4794 bp

OTI Disclaimer: The molecular sequence of this clone aligns with the gene accession number as a point of reference only. However, individual transcript sequences of the same gene can differ through naturally occurring variations (e.g. polymorphisms), each with its own valid existence. This clone is substantially in agreement with the reference, but a complete review of all prevailing variants is recommended prior to use. [More info](#)

OTI Annotation: This clone was engineered to express the complete ORF with an expression tag. Expression varies depending on the nature of the gene.

Components: The ORF clone is ion-exchange column purified and shipped in a 2D barcoded Matrix tube containing 10ug of transfection-ready, dried plasmid DNA (reconstitute with 100 ul of water).

Reconstitution Method:

1. Centrifuge at 5,000xg for 5min.
2. Carefully open the tube and add 100ul of sterile water to dissolve the DNA.
3. Close the tube and incubate for 10 minutes at room temperature.
4. Briefly vortex the tube and then do a quick spin (less than 5000xg) to concentrate the liquid at the bottom.
5. Store the suspended plasmid at -20°C. The DNA is stable for at least one year from date of shipping when stored at -20°C.

RefSeq: [BC008538.1](#)

RefSeq Size: 5595 bp
RefSeq ORF: 4796 bp
Locus ID: 17882
Cytogenetics: 11 40.59 cM
MW: 205.2 kDa