

Product datasheet for MR212039

Smarca2 (NM_026003) Mouse Tagged ORF Clone

Product data:

Product Type:	Expression Plasmids
Product Name:	Smarca2 (NM_026003) Mouse Tagged ORF Clone
Tag:	Myc-DDK
Symbol:	Smarca2
Synonyms:	2610209L14Rik; brahma; brm; SNF2alpha; Snf2l2
Mammalian Cell Selection:	Neomycin
Vector:	pCMV6-Entry (PS100001)
E. coli Selection:	Kanamycin (25 ug/mL)
ORF Nucleotide Sequence:	>MR212039 representing NM_026003 Red=Cloning site Blue=ORF Green=Tags(s)

TTTTGTAATACGACTCACTATAGGGCGGCCGGAATTCGTCGACTGGATCCGGTACCGAGGAGATCTGCC
GCC**CGATCGCC**

ATGTCCACACCCACAGACCCAGCAGCAATGCCCATCCTGGGCCCTCCCGGGCCTGGACCCTCTCCTG
GACCAATTCTGGGGCCTAGTCCAGGACCAGGACCATCCCAGGTTCTGTGCACAGCATGATGGGTCTAG
TCCCGGACCTCCAGCGTCTCACATCCTCTGTCAACGATGGGCTCTGCAGACTTCCACAGGAAGGCATG
CACCAATTACATAAGCCCATGGATGGGATACATGACAAAGGATTGTAGAAGATGCCACTGTGGATCCA
TGAAGGGCACCAGCATGCGCCCCACACCCAGGAATGGGCCCTCCACAGAGCCCATGGACCAGCAGCAG
CCAAGTTATATGTCACCACATCCGTCTCCTCTGGGAGCCCCGGAGCACGTCTCTAGCCCAACCCACCC
CAGATGCCACCGAGCCAGCCAGGGGCACTCATCCAGGAGATCCGCAGGCCATGAACCAGCCTAACAGAG
GTCCCTCGCCTTTCAGTCTGTGCAGCTGCATCAGCTTCGAGCTCAGATTTTAGCTTACAAAATGTTGGC
CAGGGGCCAGCCTCTCCCTGAAACTCTGCAGCTGGCAGTCCAGGGAAAAAGGACCTTGCCTGGCATGCAG
CAGCAGCAGCAGCAACAACAACAGCAGCAGCAGCAGCAGCAGCAGCAGCAGCAACAGCAGCAACAAC
AGCAGCCCCAGCAGCCTCAGCAGCAGGCTCAGGCACAGCCCCAGCAGCAGCAGCAACAGCAGCAGCAGCC
AGCTCTTGTTAGCTATAATCGACCATCTGGCCCCGGCAGGAGCTGCTACTGAGTGGCCAGAGCGCTCCG
CAGAAGCTGTAGCACCAGCACAAGCGGCCACCTTCCCGGCCACCCAGGCCCGCTCCAGCCACGG
CCACAGCGGTGCCCGGGCCCTCGGTGCAGCAGCCCGCCAGGGCAGCCGTCTCCGGTCTACAGCTGCA
ACAGAAGCAGAGCCGCATCAGCCCCATCCAGAAACCGCAAGGCCTGGACCCGGTGGAGATCCTGCAGGAA
CGAGAGTACAGACTTCAAGCTCGCATCGCTCATAGGATACAAGAAGTGGAAAGTCTGCCTGGTTCCTTGC
CACCAGATTTACGCACCAAGCAACCGTGGAACTGAAAGCACTTCGCTTACTCAACTTCCAACGTCAGCT
GAGACAGGAGGTGGTGGCTGCATGCGGAGGGACACCACCTGGAGACGGCCCTCAACTCCAAGCATAT
AAGCGGAGCAAGCGCCAGACCCTGCGTGAGGCACGCATGACAGAGAACTGGAGAAGCAGCAGAAGATAG
AACAGGAGAGGAAACGCCGCGCAGAAACACCAGGAATACCTGAACAGTATTTTGAACATGCAAAAGATT
TAAGGAATATCACCGTCTGTGGCCGGGAAGATCCAGAAGCTCTCAAAGCAGTGCCGACTTGGCATGCT



[View online >](#)

AACACAGAAAGGGAGCAGAAGAAGGAGACGGAGCGGATCGAGAAGGAGAGAATGCGGAGGCTGATGGCCG
 AAGATGAAGAGGGCTACAGGAAGCTTATTGACCAAAAGAAAGACAGACGTCTCGCCTACCTATTGCAGCA
 GACCGATGAGTATGTCGCCAATCTGACCAACCTGGTGTGGGAGCACAAGCAGGCCCAAGCAGCCAAAGAG
 AAGAAGAAGAGGGAGGAGGAGGAAGAAGAAGGCTGAAGAGAATGCAGAGGGAGGGGAACCTGCCCTGGGAC
 CAGATGGAGAGCCAATAGATGAAAGCAGCCAGATGAGTGACCTGCCTGTCAAAGTGACACACACAGAAAC
 TGGCAAGTCTCTTTGGACCAGAAGCACCAAGCAAGTCAGCTGGATGCCTGGCTGGAGATGAATCCT
 GGTTACGAAGTTGCACCCAGATCTGACAGTGAAGAGAGTGAATCGGACTACGAGGAGGAGATGAAGAAG
 AAGAGTCCAGTAGGCAGGAAACCGAGGAGAAGATACTGCTGGATCCCAACAGTGAAGAAGTTCCGAAAA
 GGATGCCAAGCAGATCATTGAGACTGCGAAGCAGGACGTGGACGACGAATACAGCATGCAGTACAGTGCC
 AGAGGCTCTCAGTCTACTACACGGTGGCTCACGCTATCTCTGAGAGGGTGGAGAAGCAGTCTGCCCTCC
 TCATTAACGGCACCCATAAGCATTACCAGCTCCAGGGCCTGGAATGGATGGTTTTCCCTGTATAATAACAA
 TCTGAACGGAATCTTAGCTGATGAAATGGGGCTAGGCAAGACCATCCAGACCATTGCACTCATCACGTAT
 CTGATGGAGCACAAAAGGCTCAATGGTCCCTACCTCATCATCGTCCCCCTCTCGACTCTGTCTAACTGGA
 CATATGAATTTGACAAAAGGGCTCCTTCTGTGGTGAATAATTTCTTACAAGGTACCCTGCCATGCGACG
 CTCCTCTGTTCCCGACTACGGAGTGGCAAATTCATGTCTCCTGACTACTTACGAGTACATTAAAA
 GACAAGCACATTCTTGAAGATTTCGGTGGAAAGTACATGATCGTGGACGAAGGCCACCGGATGAAGAATC
 ACCACTGCAAGCTAACCCAGTCTGAACACACACTATGTGGCCCCAGGCGGATCCTTCTGACTGGGAC
 CCCACTGCAGAATAAGCTTCCGGAATCTGGGCCCTCCTCAACTTCTCCTCCTACAATCTTCAAGAGT
 TGCAGCACATTTGAGCAGTGGTTAATGCTCCATTTGCCATGACCCGGTGAAGGGTGGACCTGAACGAAG
 AAGAAACGATTTTGATCATCAGGCGTCTACACAAGGTGCTGAGACCCTTTTTACTGAGGAGGCTGAAGAA
 AGAGGTTGAGTCTCAGCTCCGGAAAAGGTTGAGTATGTGATCAAGTGTGACATGCAGCTGCAGAAG
 ATCTGTACCGTACATGCAAGCCAAGGGATCCTCCTCACGGACGGTCTGAGAAAATATGCAACCACCATATGTT
 TCAGCACATTGAGGAATCCTTTGCTGAACACCTGGGCTATTGCAATGGGGTCATCAATGGGGCTGAGCTG
 TATCGGGCCTCGGAAAGTTTGAGCTGCTTGTGATCGTATTCTGCCCAAATGAGAGCGACTAACCCCGCG
 TGCTGCTTTTCTGCCAGATGACGTCACCTCATGACCATTATGGAGGATTACTTTGCTTTTTCGGAATCCT
 GTACCTGCGCCTTGACGGCACCACCAAGTCTGAAGATCGTGTCTTTGCTAAAGAAGTTCAATGAACCT
 GGGTCCCAGTATTTCAATTTCTTGTGAGCACAAGAGCAGGGGGCTGGGCTTAAATCTTACGGCGGACG
 ACACGGTGGTCAATTTGACAGCGACTGGAATCCTCACAGGATCTGCAGGCCAAGACCGAGCTCACCG
 CATTGGCCAAACAAACGAGGTCCGGTGTGAGGCTTTGCACCGTCAACAGTGTGGAGGAAAAGATTCTC
 GCGGCTGCCAAGTACAAGCTGAACGTGGATCAGAAGGTTATCCAAGCAGGCATGTTTGACCAGAAGTCAT
 CCAGCCACGAGCGGAGGGCCTTCTGACAGCCATTCTGGAGCACGAGGAGGAGAATGAGGAAGAAGATGA
 GGTACCAGACGACGAGACCCGTAACCAGATGATTGCTCGCCGGGAGGAAGAAATTTGATCTTTTTATGCGC
 ATGGACATGGACCGGCGGAGGGAGGATGCCCGGAACCCGAAGCGCAAACCCCGCTTGATGGAGGAAGATG
 AGCTGCCCTCCTGGATTATCAAGGATGACGCCGAAGTGGAAAGGCTCACCTGTGAAGAAGAGGAGGAGAA
 GATATTTGGGAGGGGCTCTGCCAGCGCCGGATGTGGACTACAGTGTGCCCTCACCGAGAAGCAATGG
 CTCAGGGCCATCGAAGACGGCAATTTGGAAGAAATGGAAGAGGAGGTACGGCTTAAAGAAGAGAAAAAGAC
 GAAGAAATGTGGATAAAGACCCCGTGAAGGAAGATGTGGAAAAAGCGAAGAAAAGAGAGGCCCGCTCC
 GGCTGAGAAGTTGTCACCAAATCCCCAAAACAAACGAAGCAGATGAACGCCATCATTGATACTGTGATA
 AACTACAAGACAGTTCAGGGCGACAGCTCAGTGAAGTCTTCAATCAGTTACCTTCCAGGAAAGACTTAC
 CAGAATACTATGAATTAATTAGGAAGCCAGTGGATTTCAAAAAGATAAAGGAGCGAATCCGTAATCATAA
 GTATCGGAGCCTGGGAGACCTGGAGAAAGACGTATGCTTCTCTGTACAAACGCACAGACATTCAACTTG
 GAAGGATCCCAGATCTACGAAGACTCCATTGTCTACAGTCAAGTGTAAAGAGTCTCGGACAGAAAATTG
 CCAAAGAAGAAGAGAGTGAAGAAAGCAATGAAGAAGAGGAAGAAGATGATGAAGAGGAGTGGAGTC
 AGAGGCGAAATCTGTGAAGGTGAAAATCAAGCTGAATAAAAAGGAAGAGAAAAGGCCGGGACAGGGGAA
 GGCAAGAAGCGGCAACCGAGGCAAGCCAAACCCGTCGTGAGCGATTTTGACAGTGACGAGGAACAGG
 AAGAGAACGAACAGTCAGAAGCAAGTGGAACTGATAACGAG

ACGCGTACGCGGCGCTCGAGCAGAACTCATCTCAGAAGAGGATCTGGCAGCAAATGATATCCTGGATT
 ACAAGGATGACGACGATAAGGTTTAA

Protein Sequence: >MR212039 representing NM_026003
 Red=Cloning site Green=Tags(s)

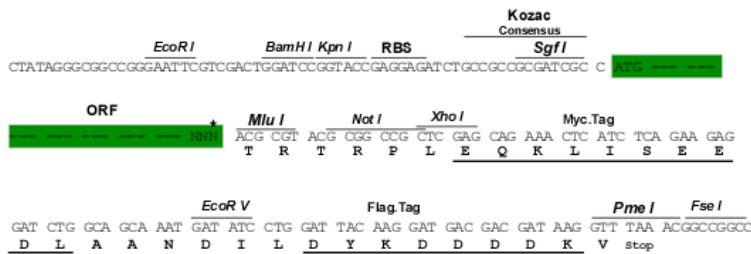
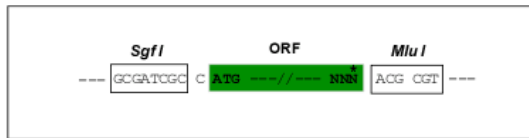
MSTPTDPAAMPHPGPSPGPGSPGPILGSPGPGSPGSPGSHMMGSPGPPSVSHPLSTMGSADFPQEGM
 HQLHKPMDGIHDKGIVEDVHCGSMKGTSMRPPHPGMGPPQSPMDQHSQGYMSPHPSPLAGAPEHVSSPTTP
 QMPPSQPGALIPGDPQAMNQPNRGPSPFSPVQLHQLRAQILAYKMLARGOPLPETLQLAVQGKRTLPGMQ
 QQQQQQQQQQQQQQQQQQQQQQQPQQPQQQAQAQPPQQQQQQQPALVSYNRPSGPGQELLSGQSAP
 QKLSAPAPSGRPSAPQAAPQPTATAVPGPSVQQPAPGQPSVPLQLQQKQSRISPIQKPQGLDPVEILQE
 REYRLQARIAHRIQELESPLGSLPPDLRTKATVELKALRLLNFQRQLRQEVVACMRRDITLETALNSKAY
 KRSKRQTLREARMTEKLEKQKQIEQERKRRQKHQEYLSILQHAKDFKEYHRSVAGKIQKLSKAVATWHA
 NTEREQKETERIEKERMRLMAEDEEGYRKLIDQKKDRRLAYLLQQTDEYVANLNLVWEHKQAQAAKE
 KKKRRRRKKKAENAEGGEPALGPDGEPIDESSQMSDLPVKVTHTETGKVLFGPEAPKASQLDAWLEMNP
 GYEVAPRSDSEESDYEEEEEEEESSRQETEEKILLDPNSEEVSEKDAKQIETAKQDVDEYSMQYSA
 RGSQSYTVAHAI SERVEKQSALLINGTLKHYQLQGLEWMSLYNNNLNGLADEMGLGKTIQTIALITY
 LMEHKRLNGPYLIIIVPLSTLSNWTYEFDKWAPSVVKISYKGPAMRRSLVPQLRSGKFNVLTTTYEYIIK
 DKHILAKIRWKYMIIVDEGHRMKNHHCKLTQVLNTHYVAPRRILLTGTPLNKLPPELWALLNLLPTIFKS
 CSTFEQWFNAPFAMTGERVDLNEEETILIIIRLHKVLRPFLLRRLKKEVESQLPEKVEYVIKCDMSALQK
 ILYRHMQAAGKILLTDGSEKDKKGGAKTLMNTIMQLRKICNHPYMFQIHIEESFAEHLGYSNGVINGAEL
 YRASGKFELLDRIPLKLRATNHRVLLFCQMTSLMTIMEDYAFRNFYLRRLDGTGKSEDRAALLKFNPEP
 GSQYFIFLLSTRAGGLNLQAADTVVIFDSDWNPHQDLQAQDRAHRIGQQNEVRVLRCLTVNSVEEKIL
 AAKYKLNVDQKVIQAGMFDQKSSSHERRAFLQAILEHEEENEEDVDPDETNLNQMIAREEEFDL FMR
 MDMDRRREDARNPKRKPRLMEDELPSWIKDDAEVERLTCEEEEEKIFGRGRQRDRVDVSDALTEKQW
 LRAIEDGNLEEMEEVRLKRRKRRRNVDKDPVKEDVEKAKRRGRPPAEKLSNPPLKTKQMNAIIDTVI
 NYKDSSGRQLSEVFIQLPSRKDLPEYYELIRKPVDFKKIKERIRNHKYRSLGDLEKDMVLLCHNAQTFNL
 EGSQIYEDSIVLQSVFKSARQKIAKEEESSEESNEEEEEDEEESSEAKSVKVKIKLNKKEEKGRDTGK
 GKRRPNRGKAKPVVSDFDSDEEQEENEQSEASGTDNE

TRTRPLEQKLISEEDLAANDILDYKDDDDKV

Restriction Sites: SgfI-MluI

Cloning Scheme:

Cloning sites used for ORF Shuttling:



* The last codon before the Stop codon of the ORF

ACCN: NM_026003

ORF Size: 4731 bp

OTI Disclaimer: Due to the inherent nature of this plasmid, standard methods to replicate additional amounts of DNA in E. coli are highly likely to result in mutations and/or rearrangements. Therefore, OriGene does not guarantee the capability to replicate this plasmid DNA. Additional amounts of DNA can be purchased from OriGene with batch-specific, full-sequence verification at a reduced cost. Please contact our customer care team at custsupport@origene.com or by calling 301.340.3188 option 3 for pricing and delivery.

The molecular sequence of this clone aligns with the gene accession number as a point of reference only. However, individual transcript sequences of the same gene can differ through naturally occurring variations (e.g. polymorphisms), each with its own valid existence. This clone is substantially in agreement with the reference, but a complete review of all prevailing variants is recommended prior to use. [More info](#)

OTI Annotation: This clone was engineered to express the complete ORF with an expression tag. Expression varies depending on the nature of the gene.

Components: The ORF clone is ion-exchange column purified and shipped in a 2D barcoded Matrix tube containing 10ug of transfection-ready, dried plasmid DNA (reconstitute with 100 ul of water).

Reconstitution Method:

1. Centrifuge at 5,000xg for 5min.
2. Carefully open the tube and add 100ul of sterile water to dissolve the DNA.
3. Close the tube and incubate for 10 minutes at room temperature.
4. Briefly vortex the tube and then do a quick spin (less than 5000xg) to concentrate the liquid at the bottom.
5. Store the suspended plasmid at -20°C. The DNA is stable for at least one year from date of shipping when stored at -20°C.

RefSeq Size: 1964 bp

RefSeq ORF: 711 bp

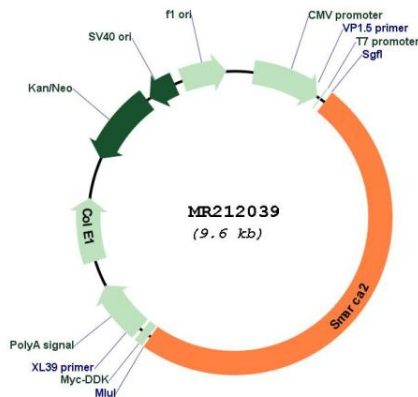
Locus ID: 67155

Cytogenetics: 19 21.17 cM

MW: 27.9 kDa

Gene Summary:

Involved in transcriptional activation and repression of select genes by chromatin remodeling (alteration of DNA-nucleosome topology). Component of SWI/SNF chromatin remodeling complexes that carry out key enzymatic activities, changing chromatin structure by altering DNA-histone contacts within a nucleosome in an ATP-dependent manner. Binds DNA non-specifically (PubMed:22952240, PubMed:26601204). Belongs to the neural progenitors-specific chromatin remodeling complex (npBAF complex) and the neuron-specific chromatin remodeling complex (nBAF complex). During neural development a switch from a stem/progenitor to a postmitotic chromatin remodeling mechanism occurs as neurons exit the cell cycle and become committed to their adult state. The transition from proliferating neural stem/progenitor cells to postmitotic neurons requires a switch in subunit composition of the npBAF and nBAF complexes. As neural progenitors exit mitosis and differentiate into neurons, npBAF complexes which contain ACTL6A/BAF53A and PHF10/BAF45A, are exchanged for homologous alternative ACTL6B/BAF53B and DPF1/BAF45B or DPF3/BAF45C subunits in neuron-specific complexes (nBAF). The npBAF complex is essential for the self-renewal/proliferative capacity of the multipotent neural stem cells. The nBAF complex along with CREST plays a role regulating the activity of genes essential for dendrite growth. [UniProtKB/Swiss-Prot Function]

Product images:


Circular map for MR212039