

Product datasheet for MR212035

Kif21a (NM_001109042) Mouse Tagged ORF Clone

Product data:

Product Type:	Expression Plasmids
Product Name:	Kif21a (NM_001109042) Mouse Tagged ORF Clone
Tag:	Myc-DDK
Symbol:	Kif21a
Synonyms:	AI850764; mKIAA1708
Vector:	pCMV6-Entry (PS100001)
E. coli Selection:	Kanamycin (25 ug/mL)
Cell Selection:	Neomycin
ORF Nucleotide Sequence:	>MR212035 representing NM_001109042 Red=Cloning site Blue=ORF Green=Tags(s)

TTTTGTAATACGACTCACTATAGGGCGCCGGGAATTCGTCGACTGGATCCGGTACCGAGGAGATCTGCC
GCC**CGATCGCC**

ATGTTGGGCGCTGCGGACGAGAGCTCGGTGCGCGTGGCTGTCAGAATAAGACCACAGCTTGCCAAAGAGA
AGATCGAAGTTGCCATATCTGCACGTCAGTCACACCGGGAGAGCCTCAGGTCTTCTCGGAAGGATAA
GGCCTTTACTTTTGATTATGTGTTGACATTGACTCCCAGCAGGAGCAGATCTACACCCAGTGCATCGAA
AAGCTCATTGAAGGCTGTTTTGAAGGCTACAATGCCACCGTGTTCCTATGGACAAACCGAGCTGGGA
AAACCTACACGATGGGAACCGGATTTGACGTGAACATCATGGAGGAAGAGCAGGGCATCATCTCTCGTGC
TGTTAGACACCTGTTCAAGAGTATTGATGAGAAAAAGACCTCAGCGATTAACCGGGCTGCCCCCTCT
GAATCAAAGTGAATGCCAGTTCCTAGAGCTCTATAATGAAGAGGTCCTTGACTTGTTTGATACCACTC
GGGATATTGATGCAAAAAATAAAAAATCAAAATAAAGAATTCATGAAGATTCAACTGGAGGAATTTATAC
TGTGGGCGTCACAACACGCACTGTGAATACAGAACCGGAGATGATGCAGTGTCTGAAGCTGGGCGCTCTC
TCGCGCACACGCGCCAGCACCCAGATGAACGTACAGAGCTCTCGTTCACACGCCATCTTTACCATCAG
TGTGTCAAACACAGAGTGTGTCCCAACAGATGCTGAGAACGCAACTGATAATAAGCTGATCTCCGAATC
GTCGCCAATGAATGAGTTTGAGACGCTGACGGCGAAGTTTCACTTTGTTGATCTGGCGGGATCGGAAAGA
CTGAAGAGAACCGGAGCTACAGGCGAGAGAGCAAAAGAGGGCATTTCATCAACTGCGGGCTTTTGCTC
TTGGGAATGTAATCAGCGCCTTGGGGGACAAGAGCAAGAGAGCCACCCATGTCCCTTACAGAGACTCTAA
GCTGACAAGACTCTGCAGGATTCCTTGGGGTAACAGCCAAACCATCATGATAGCATGCGTCAGCCCT
TCAGACAGGGATTTTCATGGAGACGTTAAACACTCTGAAGTACGCCAATCGAGCGAGAAATATCAAGAACA
AGGTGATGGTCAATCAAGACAGAGCCAGTCAGCAAATCAACGCGCTGCGGAGCGAGATCACGCGCCTTCA
GATGGAGCTCATGAATACAAAACCGTAAAAGAATAATTGACGAGGAAGGCGTGGAAAGCATCAATGAC
ATGTTTCATGAGAATGCTATGCTGCAGACGGAAAATAAATCTGCGTGAAGAATAAAGCCATGCAGG
AGACCGTTGATGCACTGAGGGCCAGAATCACGAGCTTGTGAGTGCAGGCAACCAAGTTCTTGCCCG
AGCAGGTGAAGGGAACGAAGAGATCAGTAATATGATTCATAGTTATATCAAGAAATGAAGACCTCAGG
GCAAAATTATTAGAAAGTGAAGCAGTGAACGAGAACCTTCGGAAGAACTTGACCAGAGCCACGGCGAGAT



View online >

CTCCTTACTTCAGTGCCTCCTCAGCTTTCTCGCCTACTATACTGTCTTCAGACAAGGAGACTATCGAAAT
 TATAGATCTAGCAAAGAAAGACTTGGAGAAGCTAAAACGGAAAGAGAAGAAGAAGAAAGTGTGGCC
 GGGAAAGACGATAATGCAGACACTGACCAGGAGAAGAAAGAAAGAAAGGGTGTTCAGAGAAAGAAAACA
 ATGAGCTAGACGTGGAAGAGAATCAAGAAGTGAGTGACCACGAGGATGAGGAAGAGGAGGAAGAGGACGA
 GGAGGAAGAGGATGACATTGAAGGAGAAGAAAGCTCTGATGAATCAGATCCGAATCTGATGAAAAAGCT
 AACTATCAAGCCGACTTAGCAAAATCACCTGCGAGATTGCGATTAAGCAGAAGCTGATGCTCCAACATAA
 AGAACAGCCAGAAACGGCTGCAGACCCTGAAAAAGCAGTACGAGGAGAAGCTGATGCTCCAACATAA
 GATCCGGGACACGCAGCTGGAGAGGGACCAGGTGCTCCAGAACCTAGGCTCGGTGGAGTCATACTCGGAA
 GAAAAGGCCAAGAAAGTGAAGTGCGAATATGAGAAGAAGCTCCACGCCATGAACAAAGAGCTGCAGCGAC
 TGCAGACGGCCAAAAGGAGCACGCCAGGCTCCTCAAAAACAGTCTCAGTATGAAAAGCAGCTCAAGAA
 ACTGCAGCAAGACGTCATGGAATGAAGAAAACCAAGTTCTGTCTAATGAAGCAGATGAAAGAAGAGCAG
 GAGAAAGCCCGGCTGACAGAATCTGAAGGAACCCGGAAATCGCTCAGCTGAAGAAGGATCAGCGCAAGC
 GAGATCATCAACTTAGACTTCTAGAGGCCAGAAAAGAAATCAAGAAGTAGTTCTGCGACGCAAAACGGA
 AGAGGTTACAGCTCTCCGACGGCAAGTGAGGCCATGTCTGATAAAGTAGCGGGAAAAGTTACTCGGAAG
 CTGAGCTCATCCGAAAGCCCGCTCCGGACACAGGTTCCAGTGGCGCTTCCGGGGAAGCAGACACATCAC
 GGCACAGCACCCAGCAGAAAATGAGGATCCCCGTGGCAAGAGTCCAGGCATTACCAACACCTACAACAAA
 TGGCACCAGGAAAAAATATCAGAGGAAAGGATTACTGGCCGGGTGTTCACTTCCAAGACAGCCCGCATG
 AAGTGGCAGCTACTGGAGCGCCGGTGACCGACATCATCATGCAGAAAATGACCATCTCCAACATGGAGG
 CGGACATGAACAGACTCCTCAGGCAACGGGAAGAACTCACAAAAGGCGAGAGAACTTTCTAAAAGGAG
 AGAGAAGATAGTCAAGGAGAGCGGAGAGGGAGATAAAAGTGTGGCTAACATCATCGAGGAGATGGAGTCC
 CTGACAGCCAACATAGATTACATCAATGATAGCATTGCCGACTGTCAAGCCAACATCATGCAGATGGAGG
 AGGCAAAGGAAGAAGGGGAGACATTGGATGTACCCTGTCAATTAATGCCTGTACTGACAGAAAGCTCAA
 GTACCTGTAGTCACTTCTGTCAATGGGCATCAATAAGGGTCTGCAGGCTGCCAGAAAGAGGCTCAA
 ATTAAGTCTCGAGGGTGCAGTCAAACAGACCCGAAATCACCAGTGAACCCAGAACCAACTCTTATTCC
 ATATGCTGAAGGAGAAGGCAGAGCTAAACCCAGAGCTGGATGCCTTGTAGGCCACGCACTGCAAGATCT
 AGATGGCGCCACCAGAAAACGAGGAGGACAGCAGCGAGGAAGATGGCCCTTTACACAGCCCGGGTCTG
 GAGGGAAGCACGTTATCTTCAGACCTTATGAAGCTTTGTGGTGAAGTGAACCAAGAACAAGGCTCGAA
 GGAGAACCACCACTCAGATGGAGTTGCTGTATGCAGATAGCAGTGAAGTAGCCTCAGACACTAGTGCAGG
 AGATGCCTCCTTGTCTGGCCCTCTGGCACCTGTTGCAGAAAGGCAGGAGATTGGAATGAACACAGAGACA
 AGTGGTACTTCTGCTAGGACAAAAGAGCTTCTTGCCTTCTGGCTTACCTTCTAAGATAGGCAGCATAG
 GCATAATCAACCCATTTCTGCCTGCAAAGGAGTCAAGCCTCTCCTTCTCAGTGGCTTACATAGCTGA
 AGGGCACACCAAGGCTGTGCTCTGTGTGGATTCTACGGATGATCTTCTTCCACCGGATCAAAGATCGC
 ACTTGTAAAGTATGGAATCTCGTACTGGACAGGAAATATGTCCTGGGGTTCACCCTAACAACGTGG
 TGTCTGTAAAATACTGTAATTATACCAGTCTGGTCTTACCCTGTCGACATCTTATTAAGGTGTGGGA
 TATCAGAGAGTCAGAAAATGCATTGCAACATTAACATCTTCAGGTCAAGTTACCCTTGGAGAAGCGTGT
 TCTGCCAGCACCGGACAGTAGTATTCTTCCGGGAGAGCCAGATCAATCAAATGCACTAAACC
 CAACTGGCACTTCTCTACGCGGCTCTGAAATGCCGTGAGATGTGGACCTAAAAGGTTTCAGTC
 TACAGGAAAGCTAACCGGACACCTGGGTCTGTTATGTGCCTTACGGTAGACCAGATCTCCAATGGACAG
 GACCTCATCACTGGCTCAAAAGACCACTACATCAAAATGTTGATGTGACTGAAGGGGCTCTTGGAA
 CTGTAAGTCCCACCCACAACCTCGAGCCTCCTCATTATGATGGGATAGAAGCACTGGCCATTCAAGGCGA
 TAACCTATTAGTGGTCCAGAGATAATGGAATCAAGAAATGGGACTTAGCTCAGAAAGGTCTTCTTCAG
 CAAGTCCCAAATGCACACAAAGACTGGGTGTGTGCCCTGGGCTGGTGGCAGGCCATCCGGTTTTGCTGA
 GTGGCTGCAGAGGCGGCATTCTGAAACTCTGGAATGTGGACACTTTTGTGCCCTGGAGAGATGAGAGG
 TCATGACAGTCCCATCAATGCCATTTGTGTTAACTCCACCCATGTCTTACTGCTGCTGATGATCGAACC
 GTGAGAATCTGGAAGGCCACAACCTGCAAGATGGTCAACTCTCTGACACCGGCATCTGGGGGAGGATA
 TTGCCAGTAAT

ACGCGTACGCGGCGCTCGAGCAGAACTCATCTCAGAAGAGGATCTGGCAGCAAATGATATCCTGGATT
 ACAAGGATGACGACGAT AAGGTTTAA

Protein Sequence: >MR212035 representing NM_001109042
 Red=Cloning site Green=Tags(s)

```

MLGAADESSVRVAVRIRPQLAKEKIEGCHICTSVTPGEPQVFLGKDKAFTDYVFDIDSQQEQIYTQCIE
KLIIEGCFEGYNATVFAYGQTGAGKTYTMGTGFDVNIEMEEQGIISRAVRHLFKSIDEKKTSAIKNGLPPP
EFKVNAQFLELYNEEVLDFDTRRIDAKNKKSNIRIHEDSTGGIYTVGVTRTRVNTPEMMQCLKLGAL
SRTTASTQMNVQSSRSHAIFTIHVCQTRVCPQTDANATDNKLI SESSPMNEFETLAKFHFDLAGSER
LKRTGATGERAKEGISINCGLLALGNVISALGDKSKRATHVVPYRDSKLTRLLQDSLGGNSQTIMIACVSP
SDRDFMETLNTLKYANRARNIKNKVMVNQDRASQQINALRSEITRLQMELMYKTKRIIDEEGVESIND
MFHENAMLQTENNLRVRIKAMQETVDALRARITQLVSEQANQVLARAGEGNEEISNMIHSYIKEIEDLR
AKLLESEAVNENLRKNL TRATARSFYFSAASAFSPTILSSDKETIEIIDLAKKDLEKLRKEKKKKKSV
GKDDNADTDQEKKEEGVSEKENNELDVEENQEVSDHEDEEEEEDEEEEDDIEGEESSDESDESDEKA
NYQADLANITCEIAIKQKLIDELNSQKRLQTLKKQYEEKLMLLQHKIRDQTLERDQVLQNLGSVESYSE
EKAKKVKCEYEKLLHAMNKELQRLQTAQKEHARLLKNQSQYEKQLKKLQDVMEMKTKVRLMKQMKEEQ
EKARL TESRRNREIAQLKKDQRKRHDQLRLL EAQKRNVVLRKRTTEEVTALRRQVRPMSDKVAGKPTRK
LSSSESPADTGSAAASGEADTSRPGTQQKMRIPVARVQALPTPTTNGTRKQYQKGF TGRVFTSKTARM
KWQLLERRVTDIIMQKMTISNMEADMNRLLRQREELTKRREKLSKRREKIVKESGEGDKSVANIIEMES
LTANIDYINDSIADCQANIMQMEEAKEEGETLDVTAVINACTL TEARYLLDHFLSMGINKGLQAAQKEAQ
IKVLEGRLLKQTEITSATQNQLLFHMLKEKAELNPELDALLGHALQDLGDGAPPENEEDSSEEDGPLHSPGS
EGSTLSSDLMKLCGEVKPKNKARRRRTTQMELL YADSSEVASDTSAGDASL SGPLAPVAEGQEIGMNTET
SGTSARDKELLAPSGLPKIGSIGIINPFPAKGVASPLQCVHIAEGHTKAVLCVDSTDDLLFTGSKDR
TCKVWNLVTGQEIMSLGVHPNNVSVKYCNYTSLVFTVSTSYIKVWDIRESAKCIRTLTSSGQVTLGEAC
SASTSRTVAIPSGESQINQIALNPTGTFLYAASGNVAVRMWDLKRFQSTGKLTGHLGPVMCLTVDQISNGQ
DLIITGSKDHYIKMFDVTEGALGTVSPTHNFEPPHYDGEALAIQGDNLFSGSRDNGIKKWDLAQKGLLQ
QVPNAHKDWVCALGLVPGHPVLLSGCRGGILKLVNVDTFVPVGMERGHDSFINAICVNSTHVFTAADDRT
VRIWKAHNLQDQQLSDTGDLGEDIASN
  
```

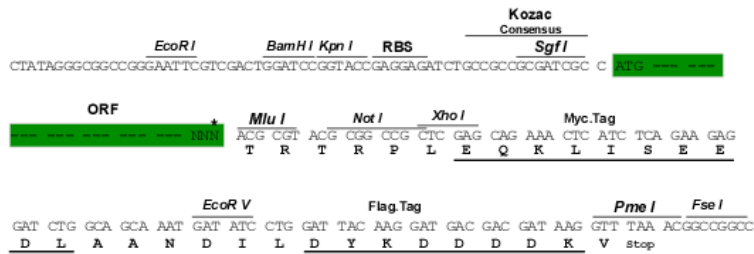
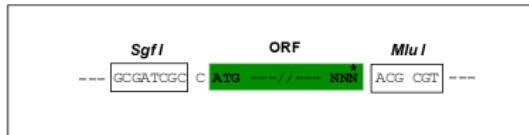
TRTRPLEQKLISEEDLAANDILDYKDDDDKV

Restriction Sites:

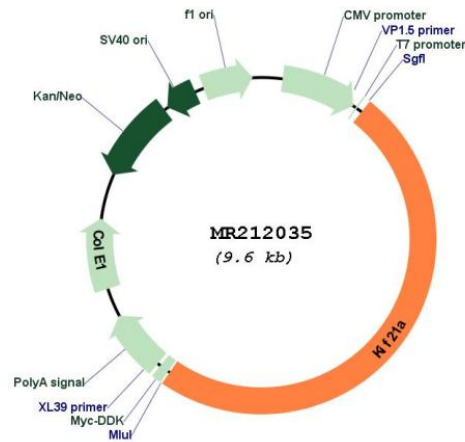
SgfI-MluI

Cloning Scheme:

Cloning sites used for ORF Shuttling:



* The last codon before the Stop codon of the ORF

Plasmid Map:


ACCN: NM_001109042

ORF Size: 4701 bp

OTI Disclaimer: The molecular sequence of this clone aligns with the gene accession number as a point of reference only. However, individual transcript sequences of the same gene can differ through naturally occurring variations (e.g. polymorphisms), each with its own valid existence. This clone is substantially in agreement with the reference, but a complete review of all prevailing variants is recommended prior to use. [More info](#)

OTI Annotation: This clone was engineered to express the complete ORF with an expression tag. Expression varies depending on the nature of the gene.

Components: The ORF clone is ion-exchange column purified and shipped in a 2D barcoded Matrix tube containing 10ug of transfection-ready, dried plasmid DNA (reconstitute with 100 ul of water).

Reconstitution Method:

1. Centrifuge at 5,000xg for 5min.
2. Carefully open the tube and add 100ul of sterile water to dissolve the DNA.
3. Close the tube and incubate for 10 minutes at room temperature.
4. Briefly vortex the tube and then do a quick spin (less than 5000xg) to concentrate the liquid at the bottom.
5. Store the suspended plasmid at -20°C. The DNA is stable for at least one year from date of shipping when stored at -20°C.

RefSeq: [NM_001109042.2](#), [NP_001102512.1](#)

RefSeq Size:	6124 bp
RefSeq ORF:	4704 bp
Locus ID:	16564
UniProt ID:	Q9QXL2
Cytogenetics:	15 45.86 cM
MW:	175.3 kDa
Gene Summary:	Microtubule-binding motor protein probably involved in neuronal axonal transport. In vitro, has a plus-end directed motor activity.[UniProtKB/Swiss-Prot Function]