

## Product datasheet for MR212020

### Nup214 (BC039282) Mouse Tagged ORF Clone

#### Product data:

Product Type:	Expression Plasmids
Product Name:	Nup214 (BC039282) Mouse Tagged ORF Clone
Tag:	Myc-DDK
Symbol:	Nup214
Synonyms:	CAN, RP23-55I14.4
Vector:	pCMV6-Entry (PS100001)
E. coli Selection:	Kanamycin (25 ug/mL)
Cell Selection:	Neomycin
ORF Nucleotide Sequence:	>MR212020 representing BC039282 Red=Cloning site Blue=ORF Green=Tags(s)

TTTTGTAATACGACTCACTATAGGGCGCCGGGAATTCGTCGACTGGATCCGGTACCGAGGAGATCTGCC  
GCCGCGATCGCC

ATGTCCAGTACCCAAACACAGGGATGAAGCCTTCGTTCCCTCCCTCGGCCTCTTCGGTGAAGTCAACC  
TGAATGAGAAGTTCACCGCTGTGGCCTCCTCTGCACCTGTTTCATAGCTCCAGGACACACCCTCCGTGTT  
GCCGTTCTCCTCCTCCCGAAGCCAACGGCTTCTGGACCACTCAGCCATCCTACGCCTCTCCAGCATCA  
TCCAGCTCCATGCCTTTGAAGTCTTCGGTCTCTCCCTCGCCAGCAGCTGGCCGCTCCACTCAGACTGCGC  
CAAGTTACGACCCCTCCACAGGGCAGAAATCACCCAGGGTAAACCCTCCAGTGCCAAAGTCAAGTCTTTC  
TCAGGCCAAGGCACTTCAGCCTCCTGTACAGAGAAACAGAGGCCTCAGTGGAAAGACTCAGACCCCGTG  
CTGGCTGGGATTGGAGAGGAGATTGCACACTCCAGAAAGAACTAGAGGAGTTAAAGGCCCGGACCCGCA  
AAGCCTGTCTCCAGGTTGGCACCTCAGAAGAGATGAAGATGCTGCGGACAGAGTCAGATGACTTGACAC  
CTTTCTTTTGTAGATTAGAGAGACCACAGAGTCTTTCATGGAGACATAAGTACTCTGAAAACAACTTTG  
CTGGAGGGCTTTGCTGGGGTCAAGAAGCCAGAGAACAGCACGGAAGAAATCACGACTCTGGGTATCTCC  
ACCTGCTTTATAAAGACCGCTGGATCCCAAGAGCGAGGCCAGCTCCAGGAAATTCGCGCCTTACCA  
GTACGTGAAATTTGCTGTCCAGGATGTGAATGACGTCCTAGACTTAGAGTGGGATCGGCATCTGGAGCAG  
AAGAAGAGACAGAGGCGCCTAATTGTGCCAGAACGAGAGACACTTTTCAACACGCTAGCCAAACCCGGG  
AGATCATCAACCAGCAGAGGAAGAGGCTGAATCAGCTGGTGGACAGTCTGCAGCAGCTCCGTCTCTATAA  
CCACACGGCCCGTGGAGCCTGCCCTCAGCGCTCTCAACTCAGAGCAACAGTCACAGTTTGGACAGTGAC  
CTTGAATGCCTGTAAAACTACCATTGAATCTCACACCAAGCCTTCTCCAGAGTGCCAGGTAATTTGT  
CCCCGGCGAAACAGGCCAACTGAGGAACTTCTGGCCAAAAGGAAGACCCACCAGTGAGGTCTACTGC  
TCCAGCCAGCCTGTCCCGGTGAGCCTTCTATCTCAGAGTACTATGAAGACTTAGATGAAGGCAGCTCC  
GCGTCATCCGTAGCTCAGCCTCTGGAGGAGAAGATGCCCGCCAACCTGCACATCTGTAGCTCAGCCTC  
TGGAGGGAGAAGATGCCAGCCAATCTGCAAGAGGAAGAGGCTGTGGTCCCAGTACCTCGGCATGCCCC  
TGTGGTCCGCACACCTTCTATCCAACCCAGTCTCCTGCCTCAGTCGATGCCCTTTGCAAAGCCTCACCTG  
ATCCATAGTTCTTACCTGCCGTGATGAGCTCTGCAGTCTCTACGTCAGCCACCAAGTTATTCTCAGG



[View online »](#)

GAGCAGACAGCAATGCTGGCACTAAAAAGTAAAGCACGGTGCACCAGGTCCTTCCCACACTGTTGC  
 AGCTCCCCAGGCCGACGTGCTGCAGCCCTAAGACGGCAGATGGCCAGTCAGGCACCAGCTATGAGCACT  
 CTGACCGAATCAACTCTGAAGACTGTCCCTCAGGTGGTGAATGTACAGGAACTGAGGAGTAATCCCTCGC  
 CCCATCTGCGGCCATGGGTTCTGCCGTGCAGCACTCAGCAGCCAAAACACCCCATGCTGTGTTAACCC  
 CGTGGCTAACAGCCAAGCCAAGCAGGGGTCTCTGATAAATTCTTCAAGCCGTGAGGACCCACAGCAGCA  
 TCCTGTCAAGTGTCTCTGCGGATAAAGCTGTAGTCAAGGGACAGCCAAGACAGAGTCCGCTGCCACCT  
 CGACTCCATCTGCTGCAGGACAGCTCAACAAGCCTTTCTCATTGCGCTCCCAGGGACCTTTACTTTTGG  
 GACAATCACACCAACCCCATCTTCTAGTTTCACTGCCACACCAGGGGCAGGACCCCTACTAAAGAGCCA  
 ACCCAGCTTGAGGCATTCTCATTGGCGGGGAGGCAACCTTTCTCTGAGGCCATTCTGGAAGCTCCC  
 CTGCCACAGGAGCAACATCGGCACCCAGCACTTCTGTAACAGCTGCCTCTCTGGAAGACTGCTCCATC  
 CAGCAGCAAACCTGCAGCTCCTCCTGAACTACTGTGCTCTGCTTCTAGCAAATTGGAAGCTCCACCG  
 TCCAAGTTAGGAGAGCTTCTGTTCCAAGCTCTAGCTGGAGAGACGCTGGGGAGCTTCTCGGGCTGC  
 GTGTTGGCCAAGCTGAGGATTCTACTAAGCCAGTTAGTAAGGCCCTCTCCACAAACCTAGCTGGAGCCCA  
 GCCAGCTAAGCCCTCAGGGTTAGCTTTCTAATACTTCAGTGTAGGGAAGCCAGTGGAGCCCGCTGTG  
 ACCTCCTCTGTGAGCCCCGCCAGCAGCACCAGCCTCAGCTCTGAATGTGAGCACTAGCAGTTCCTCAG  
 CAACTGTCTTTGGCAGTGTGCCCTTACCAGTGTGGACCTCTGGGCTCATCAGTTTTGGTGGGGCTGC  
 TTTGGCTAGTAGCAAAGCTAGTTTCTCATTGGAAACCAGCAGACTAGTAGTAGTACAGCATCATCAGCT  
 ACCCCAACATCGACCTCAGTTGCCCTTCCCTTCCAGCATCTTCCCTACTTTGTCAATTTGGTGGCTCC  
 TGAGTTACCATCAGCTTCTTCCCTGCCGTGCTCTGGTAAGAGTACAGAGGAGGCAGCACCACCAGC  
 TGTTCTGACAAGTCAGACAGCAGTGAAGTTTCAGCAACAACACCCCTCACTTCCAGTACAGCCACAGTCA  
 ACCCAGGCATCTCTGCAAACCTTGACCCTGTCAAAAAGAACCTGTTCTGTGCAGACCACAGACAGCA  
 GCCCAGCAGACCAGCATCTTCTGCCAGCTTTGGCATCCACAGAGTCCATGCCAGTAAACCCTAGGGGC  
 CCTGACAGCAAGATAGAGGCAGTGTCTCTGCTCCACCTTTGCAGGGCCTGGACAGGCTGTCTGGCA  
 ACAGCTGTTCTCCAGGAGCAGGCTCGGCAGCCACTGAAGCATCGGGTACCCCTACCACCTCCACTGTCT  
 CCAGCAGTAGCCAACTTCTGCCACAGAGACAGCTGTATTTGGGACTGCCACATCTGTTTCTCAGTCTT  
 TACACAGCCACCTGCTGCCAGTTCTAGCTCAGCGTTTCCAGCAGCTCTCCAGTAACACAGCCACTGCGCC  
 TCTGCCACCCCTGTGTTGGCAAGTGGCAGCCAGCATAACCAGCACAGCCGCTGCCACACCACAGGCCA  
 GCAGTTACAGGTTTGGCAGCCCTGCATTTGGTGTTCAGCTCCTGGAGTGTTCGGACAGACAGCATTGG  
 GCAGACCCAGCCTTTGGCAAGCAACAAGCAGCCCTGCCAGTGGCTTCTCCTTCCAGCCAGCCTGGGTT  
 AGTTCCGTGCCTGCTTTGGCCAGTCTGTCTCCTTACCCCGCATCCACCAGTGCAAATGTCTTTGGAG  
 CCACCTCGAGTACCAGCAGTCTGGTTCCTTCTCATTGGACAGGCTTCTACCAATACAGGAGGGACGCT  
 GTTTGGTCAAAACAACCTCCTGCTTTTGGTCCAGAGCCCTGGCTTTGGCAGGGAAGCTCTGTGTTGGT  
 GGCACCTCGGCCACTACCTTACAGCAGCACCTTCCAGGTTTGTGTTTGTCAAGCCTCCGGTTTGGGT  
 CTAGTAATACTGGTTCTGTGTTGGCCAGGCAGCAACACTGGTGGGTGAGTCTTTGGCCAGTATCCAC  
 TTCCAGTGGTGGCGTGTGGGTCTGGAATGCTACAAGAGGGGGCGGTTTCTTCCAGTGGCTTGGAGGA  
 AAACCCAGCCAGGATGCTGCCAACAACCCCTTCCAGCTCAGCCGGTGGGGGCTTTGGATCTACAGCTG  
 CCCAAATACCTTAATCTGTTGGAAACAGTGGAGCTAAGACATTTGGAGGTTTGGCAGCTCATCCTT  
 CGGGGAACAGAAGCCTGCCGGCACATTCAGCTTGCCGGTGGGAGCGTAGCATCCAAGGTTTTGGATT  
 TCCACTCCAATAAAAACAGGTGGCTTCCGTGCTGCTCCAGTGTGTTGGCAGCCCTCTACTTTGGGGAT  
 CCCTGGGTTTGGAGGGTGGCAGCATTGGTTTCCAGCCAGCCTTTACAAGCCCTCTGGGCTCGACGGG  
 AGGCAAAGTGTTCGGAGAGGGTACTGCGCTGCCAGCGCAGGCGGATTCCGGTTCGGGAGCAGCGCAAT  
 ACTGCATCCTTCGGTACCCTCGCCAGTCAGAACGCACCCACCTTCCGGTCTTGTCCAGCAGACCTCAG  
 GCTTTGGGACCCGAGCAGTGGATTGCTGGGTTTGGATCGGGCACAGGAGCCTTACCTTTGGATCATC  
 TAACTCGTCTGTCCAGGCTTCCGTGGCTGGAGAAGC

ACGGTACGCGGCCGCTCGAGCAGAACTCATCTCAGAAGAGGATCTGGCAGCAAATGATATCCTGGATT  
 ACAAGGATGACGACGATAAGGTTAA

Protein Sequence: >MR212020 representing BC039282  
 Red=Cloning site Green=Tags(s)

```

MSSTPNTGMKPSFPPSASSVKVNLNEKFTAVASSAPVHSSTSTPSVLPFSSSPKPTASGPLSHPTPLPAS
SSSMPLKSSVSPSPAAGRSTQTAPSSAPSTGQKSPRVNPPVPKSGSSQAKALQPPVTEKQRPQWKDSDPV
LAGIGEEIAHFQKELEELKARTAKACLQVGTSEEMKMLRTEDDLHTFLFEIRETTESLHGDISTLKTTL
LEGFAGVEEAREQHGRNHDSGYLHLLYKRPLDPKSEAQLQEIRRLHQYVKFAVQDVNDVLDLEWDRHLEQ
KKRQRRLIVPERETL FNTLANNREIINQQRKRLNQLVDSLQQLRLYNHTAPWSLPSALSTQSNHSFSDSD
LECLLKTTIESHTKPSRPVPGKLSPAKQQLRNFLAKRKTTPVVRSTAPASLSRS AFLSQRYYEDLDEGSS
ASSVAQPLEGEDARPTCTSVAQPLEGEDAQICKEEEAVVPVPRHAPVVRTPSIQPSLLPQSMFPAKPHL
IHSSSPAVMSSAVSTSATKVIPQGADSTMLATKTVKHGAPGPSHTVAAPQAAAAAALRRQMASQAPAMST
LTESTLKTVPQVNVNQELRSNPSPPSAAMGSAVQHSAAKTPHAVLTPVANSQAKQGSLINSFKPSGPTAA
SCQLSSGDKAVGQGTAKTESAATSTPSAAGQLNKPFSFASPGTFTFGTITPTPSSSFATPGAGPPTKEP
TQLEAFSFGGGGKPFSEAIIPGNPATGATSAPSTSVTAASLEDSAPSSSKPAAPPETT VSSASSKLETPP
SKLGELLFPSSLAGETLGSFSGLRVQAEDSTKPVSKASSTNLAGAQAQPSGVSPNTSVLKGKPEPAV
TSSVSPAPAAPASALNVSTSSSSATVFGSVPLTSAGPPGLISFGGAALASSKASFSGNQTSSSTASSA
TPTSTSVAPSLPASFP TLSFGGLLSSPSASSLPVSSGKSTEEAAPPVDPKSDSSEVSATTPSLPVQPQS
TQASLQTSDPVKKEPVLVQTTDSSSRPASSASFVASTESMPVTLGAPDSKIEAVSPASTFAGPGQAAVA
TAVLPGAGSAA TEASGPTTSTVSSSSPTSATETAVFGTATS GSSVFTQPPAASSSSAFS QLSSTNATAP
SATPVFGQVAASITSTAAATPQASSSGFGSPA GASAPGVFGQTAFGQTPAFGQATSSPASGFSFSQPGF
SSVPAFGQSVSSTPASTANVFGATSSTSSPGSFSFGQASTNTGGTLFGQNNPPAFGQSPFGFGQSSVFG
GTSATTSTAAPSGFSFCQASGFGSSNTGSVFGQAANTGGSVFGQSSTSSGGVFGSGNATRGGGFFSGLGG
KPSQDAANKNPFSSAGGGFGSTAAPNTSNLFGNSGAKTGGFGSSSFGGEQKPAATFSSGGGSVASQGFGE
STPNKTTGGF GAAPVFGSPPTFGGSPGFGGVPAFGSAPAF TSP LGSTGGKVFGE G TAAASAGGF GFGSSGN
TASFGTLASQNAPTFGSLSQQTSFGTSPSSGFAFGSGTGAF TFGSSNSSVQGGFGWRS
    
```

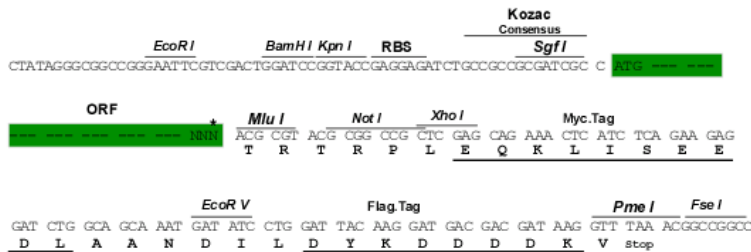
TRTRPLEQKLISEEDLAANDILDYKDDDDKV

Restriction Sites:

Sgfl-MluI

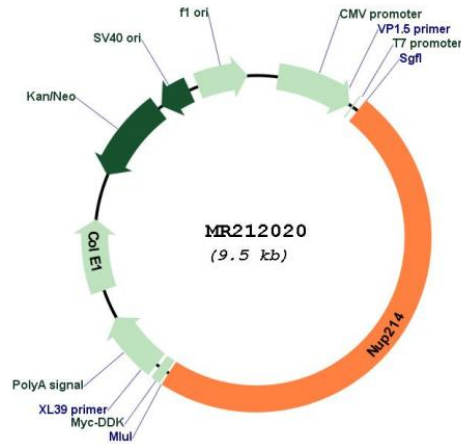
Cloning Scheme:

Cloning sites used for ORF Shuttling:



\* The last codon before the Stop codon of the ORF

Plasmid Map:



ACCN: BC039282

ORF Size: 4587 bp

OTI Disclaimer: The molecular sequence of this clone aligns with the gene accession number as a point of reference only. However, individual transcript sequences of the same gene can differ through naturally occurring variations (e.g. polymorphisms), each with its own valid existence. This clone is substantially in agreement with the reference, but a complete review of all prevailing variants is recommended prior to use. [More info](#)

OTI Annotation: This clone was engineered to express the complete ORF with an expression tag. Expression varies depending on the nature of the gene.

Components: The ORF clone is ion-exchange column purified and shipped in a 2D barcoded Matrix tube containing 10ug of transfection-ready, dried plasmid DNA (reconstitute with 100 ul of water).

**Reconstitution Method:**

1. Centrifuge at 5,000xg for 5min.
2. Carefully open the tube and add 100ul of sterile water to dissolve the DNA.
3. Close the tube and incubate for 10 minutes at room temperature.
4. Briefly vortex the tube and then do a quick spin (less than 5000xg) to concentrate the liquid at the bottom.
5. Store the suspended plasmid at -20°C. The DNA is stable for at least one year from date of shipping when stored at -20°C.

**RefSeq:** [BC039282.1](#)

**RefSeq Size:** 4962 bp

**RefSeq ORF:** 4589 bp

**Locus ID:** 227720

**Cytogenetics:** 2 21.97 cM

**MW:** 181.9 kDa

**Gene Summary:** May serve as a docking site in the receptor-mediated import of substrates across the nuclear pore complex.[UniProtKB/Swiss-Prot Function]