

Product datasheet for MR211978

Col2a1 (BC052326) Mouse Tagged ORF Clone

Product data:

Product Type:	Expression Plasmids
Product Name:	Col2a1 (BC052326) Mouse Tagged ORF Clone
Tag:	Myc-DDK
Symbol:	Col2a1
Synonyms:	Col2; Col2a; Col2a-1; Del1; Dmm; Lpk; Rgsc856
Vector:	pCMV6-Entry (PS100001)
E. coli Selection:	Kanamycin (25 ug/mL)
Cell Selection:	Neomycin
ORF Nucleotide Sequence:	>MR211978 representing BC052326 Red=Cloning site Blue=ORF Green=Tags(s)

TTTTGTAATACGACTCACTATAGGGCGGCCGGAATTCGTCGACTGGATCCGGTACCGAGGAGATCTGCC
GCCGCGATCGCC

ATGATCCGCCTCGGGCTCCCCAGTCGCTGGTGTCTGACGCTGCTCATCGCCGCGGTCTACGGTGTC
AGGGCCAGGATGCCCGAAAATTAGGGCCAAAGGGGCAGAAAGGAGAACCCTGGAGATATCAGAGATATCAT
AGGACCCAGAGGACCTCCTGGCCCTCAGGGACCTGCAGGTGAACAAGGACCCAGAGGTGATCGTGGTGAC
AAGGGAGAAAAGGGTGCCTGGACCCCGTGGCAGAGATGGAGAACCCTGGTACCCCTGGAATCCTGGCC
CCGCTGGCCCTCCAGGTCCCCCTGGTCCCCCTGGCCTTAGTGCAGGAACTTCGCGGCTCAGATGGCTGG
AGGGTATGACGAGAAGGCTGGTGGTGCCAGATGGGAGTCATGCAAGGGCCCATGGGCCCATGGGACCC
CGTGGACCCCAAGGCCCTGCCGGTGCCCGGCGCCCTCAAGGATTTCAAGGCAATCCTGGTGAACCTGGCG
AGCCTGGTGTCTCTGGTCCATGGGTCCCGAGGTCTCCTGGCCCTGCTGGAAAACCTGGTGACGACGG
TGAAGCTGGGAAGCCCGAAAGTCTGGGGAAAGAGGCCTCCCTGGCCCTCAGGGTCTCGTGATTCCCA
GGAACCCCGGTCTCCCGGTGTCAAGGGTACAGAGGTTACCCAGGCCCTCGACGGTGCTAAGGGGGAAG
CTGGTGTCCGGGTGTGAAGGGTGAAGGTGAGGTGTTCCCTGGTGAACAACGGATCCCCGGGCCAATGGGTCC
CGGTGGCCTGCCTGGTGAGAGAGGACGGACTGGCCCTGCTGGTGTCTGGTGTCTCGGGGTAAACGATGGC
CAGCCAGGCCCGCTGGACCTCCGGGTCTGTGGTCCCGCAGGTGGTCTGGTTCCTGGTGTCTCTG
GTGCCAAGGGCGAAGCTGGTCCCACTGGTGTCTCGCGGTCTGAAGGTGCTCAAGGTTCTCGTGGCGAGCC
TGGCAATCCTGGGTCCCCTGGGCTGCAGGTGCTTCTGGTAACCCAGGGACTGATGGTATTCTGGAGCC
AAAGGATCCGCTGGTGTCTCTGGAATTGCTGGTCCCCCTGGTTCCTGGGCCCGTGGCCCTCCCGGTC
CTCAAGGTGCAACTGGTCCCCTTGGCCCAAGGTGAGCGGGTGAACCTGGCATTGCTGGCTTTAAAGG
TGATCAAGGCCCAAGGGAGAGACTGGACTGCTGGGCCCAAGGAGCCCTGGCCCGCTGGTGAAGAA
GGCAAACGAGGTGCTCGAGGAGAGCCGGTGGTGTGACCAATCGGACCCCTGGAGAGAGAGGTGCTC
CTGGCAACCGTGATTCCAGGTCAAGATGGTCTGGCAGGTCCAAGGGTGGCCCTGGAGAGCGAGGGCC
CAGTGGCTTACTGGTCCCAAGGGAGCCAACGGTGACCCGGTCTGCTGGAGAACCCTGGTCTTCTGGA
GCCAGGGTCTTACCGGTGCGCCCTGGTGTGACGCTGGTCTCAAGGCAAAGTTGGTCTTCTGGAGCCCTG



[View online >](#)

GTGAAGACGGTCGCCCTGGACCTCCTGGTCTCAGGGAGCTCGTGGGCAGCCTGGCGTCATGGGTTTCCC
TGGCCCCAAAGGTGCCAACGGCGAGCCTGGCAAAGCTGGTGAAGGGTCTGGCTGGCGCTCCTGGTCTG
AGAGGTCTTCTGGAAAAGACGGTGAGACGGGAGCCGAGGACCCCCGGCCCCAGTGGACCTGTGGTG
AACGAGGCGAGCAGGGCGCTCCTGGACCATCAGGGTCCAGGGACTTCTGGCCCTCCCGGTCCCCAGG
TGAAGGTGAAAGCAAGGTGACCAGGGTATTCTGGTGAAGCTGGAGCTCCTGGCCTTGTTGGTCTCGG
GGCGAGCGAGGTTTCCAGGTGAACGTGGCTCTCTGGTGCTCAGGGCCTCAGGGTCCCCGAGGCTCC
CTGGCACTCCTGGTACTGATGGTCCCAAAGGTGCAGCTGGCCAGATGGCCCCCTGGGGCTCAGGGCC
TCCAGGTCTACAGGGAATGCCTGGTGAAGAGGAGCCGCTGGCATTGCTGGGCCCAAGGGAGACAGAGGC
GATGTTGGCGAGAAAGGCCAGAGGGAGCTCCTGGGAAGGATGGCGGCCGAGGTCTGACTGGGCCATCG
GACCCCCAGGCCAGCAGGGGCCAACGGCGAGAAGGGAGAAGTCCGACCTCCTGGCCCTCAGGAAGTAC
CGGAGCTCGAGGTGCCCGGGTGAACGGGAGAGACCGGGCCACCTGGACCTGCTGGATTGCTGGCCCT
CCTGGTCTGATGGCCAGCTGGTCCAAAGGTGATCAAGGAGAAGCCGGACAGAAAGGAGATGCTGGT
CCCCGGCCACAAGGCCCTCGGGAGCCCTGGGCCACAGGGTCTACTGGAGTACTGGTCTAAGGG
AGCCCCAGGTGCCAAGGTCCCCGGGAGCCACCGGATTCCCTGGAGTCTGGCCGAGTTGGACCCCCA
GGTGCTAATGGCAATCCTGGACCGCCGTCCCCCTGGTCTGCTGGAAAAGATGGTCCCAAAGGTGTC
GAGGAGACAGTGGCCCCCTGGCAGAGCTGGTACCCCCGTCTTCAAGGTCTGACAGGAGCTCCTGGCGA
GAAAGGAGAACCTGGAGATGATGGTCCCTCTGGTCTTATGGTCTCCAGGTCCCCAGGGCTGGTGGT
CAAAGGGGCATTGTTGGTCTGCCTGGTCAAGCTGGTGAAGAGAGGATTCCCCGGCCTTCCCGGCCATCGG
GTGAGCCCGGCAAGCAGGGTGCACCTGGCGCGTCTGGAGACAGAGGTCTCCTGGTCTGTGGGGCTCC
TGGCCTGACAGGGCTGCAGGTGAACCTGGACGAGAGGGCAGCCCTGGTCTGATGGACCCCTGGAAGA
GATGGTGCAGCTGGAGTCAAGGGAGATCGTGGTGAAGTGGAGCACTGGGTGCCCTGGAGCTCCTGGG
CCCCAGGCTCTCCTGGTCTGCTGGCCAACTGGCAACAAGGAGACAGAGGAGAGGCTGGTGCACAAGG
TCCTATGGGTCCCTCAGGACCTGCTGGAGCCGTGGGATTGCAGGCCCTCAAGGCCCCGAGGTGACAAA
GGAGAATCTGGAGAGCAGGGCGAGAGGGACTGAAGGGACACCGAGGTTTCACTGGACTGCAGGGTCTGC
CTGGCCCTCCGGGTCTTCTGGAGATCAGGGTCTTCTGGCCCTGCTGGTCTTCTGGCCCTAGAGGTCC
ACCTGGCCCTGTTGGTCCCTCTGGCAAAGATGGTCTAATGGAATCCCTGGCCCCATCGGGCTCCAGGT
CCCCGTGGACGCTCAGGAGAAACAGGCCCTGTTGGTCCCCCTGGAAGTCCCGGTCTCCTGGCCCTCCAG
GTCCTCCTGGTCTGGCATCGACATGTCAGCCTTCTGGCTTAGGGCAGAGAGAGAAGGGCCCCGACCC
CATGCAGTACATGCGGGCCGACGAGGCAGACAGTACCTTGAGACAGCACGACGTGGAGGTGGACGCTACA
CTCAAGTCACTGAACAACCAGATTGAGAGCATCCGCAGCCCCGACGGCTCCCGAAGAACCCTGCTCGCA
CTTGCCAAGACCTGAAACTCTGCCACCCGAGTGAAGAGCGGAGACTACTGGATTGATCCCAACCAGGG
CTGCACCTTGGACGCCATGAAAGTTTTCTGCAACATGGAGACCGCGAGACTTGGCTTACCCCAACCCA
GCGACTGTCCCTCGAAAAACTGGTGGAGCAGCAAGAGCAAGGAAAAGAAACACATCTGGTTTGGAGAGA
CCATGAACGGTGGCTTCCACTTCACTATGGCGATGGCAACCTGGCTCCCAACACCGCTAACGTCCAGAT
GACTTTCTCCGTCTACTGTCCACTGAGGGCTCCAGAACATCACCTACCACTGTAAGAACAGCATCGCC
TACCTGGACGAAGCGGTGGCAACCTCAAGAAGGCCTTGCTCATCCAGGGCTCCAATGATGTAGAGATGA
GGGCCGAGGGCAACAGCAGGTTACATACTGCCCTGAAGGATGGTGCACGAAACACTGGTAAAGTG
GGGCAAGACCGTCATCGAGTACCGATCACAGAAGACCTCCCGCCTTCCATTATTGACATCGACCCCATG
GACATTGGAGGGCTGAACAGGAATTTGGTGTGGACATAGGGCTGTCTGCTTCTTG

ACGCGTACGCGGGCGCTCGAGCAGAACTCATCTCAGAAGAGGATCTGGCAGCAAATGATATCCTGGATT
ACAAGGATGACGACGATAAGGTTTAA

Protein Sequence: >MR211978 representing BC052326
 Red=Cloning site Green=Tags(s)

MIRLGAPQSLVLLTLLIAAVLRCQGQDARKLGPKGQKGEPPGDIRDIIGPRGPPGPQGPAGEQGGPRGDRGD
 KGEKGAPGPRGRDGEPTGNPGPAGPPGPPGGLSAGNFAAQMAGGYDEKAGGAQMGMVMQGMGPMGP
 RPPPGPAGAPGPGQGFQGNPGEPGEPVSGPMGPRGPPGPAGKPGDDGEAGKPGKSGERGLPGPQGARGFP
 GTPGLPGVKGHRGYPGLDGAKEAGAPGVKGESESGSPGENSGPMGPRGLPGERGRTGPAGAAGARGNDG
 QPGPAGPPGPVGPAGGPGFPAGPAKGEAGPTGARGPEGAQGSRGEPGNPGSPGAGASGNPGTDGIPGA
 KGSAGAPGIAGAPGFPGRGPPGQATGPLGPKQAGEPGIAGFKGDQGPKEGTPAGPQAGPAGEE
 GKRGARPEGGAGPIGPPGERGAPGNRGFPGQDGLAGPKGAPGERGSPGLTGPKGANGDPGRPGEPGLPG
 ARGLTGRPGDAGPQKVGPSGAPGEDGRPGPPGPQARGQPGVMGFPGPKGANGEPGKAGEKGLAGAPGL
 RGLPGKDGETGAAGPPGSPGAGERGEQAGPSPGFQGLGPPGPPGEGGKQGDQIPGEAGAPLVGPR
 GERGFPGERSPGAQGLQGRPLPGTPTDGPKAAGPDGPPGAQGPGLQGMPGERGAAGIAGPKGDRG
 DVGEGKPEGAPGKDGGRGLTGIPTGPPGAGANGKGEVPPGSPGSGTGARGAPGERGETGPPGPAFAGP
 PGADGQPGAKGDQGEAGQKGDAGAPGPQPSGAPGPQPTGVTGPKGARGAQGPPGATGPFGAAGRVP
 GANGNPGPAGPPGAGKDGPKGVRGDSGPPGRAGDPGLQGPAGAPGKGEPPGDDGSPGLDGPMPGQLAG
 QRGIIVGLPGQRGERGFPLPGSPGEPGKQAGPAGSADRGPVGPVPPGLTGPAGEPREGSPGADGPPGR
 DGAAGVKGDRGETGALGAPGAPPPGSPGAPGPTGKQGDREAGAQQMGPSPGAPARGIAGPQGRGDK
 GESGEQGERGLKGHRGFTGLQGLGPPGSPGDQAGSAPGSPGPRGPPGVPVSGKDGSNIPGPIGPPG
 PRGRSGETGPVGPSPGPPGPPGPPGIDMSAFAGLQREKGPDPMQYMRADSTLRQHDVEVDAT
 LKSLNNQIESIRSPDGSRKNPARTCDLKLCHPEWKS GDY WIDPNQCTLDAMKVF CNMETGETCVYVNP
 ATVPRKNWSSKSKKHIWFGETMNGGFHF SYDGNL APNT ANVQMTFLRLLLSTEGSQNITYHCKNSIA
 YLDEAAGNLKALLIQGSNDVEMRAEGNSRFTYALKDGTCKHTGKWKTVIEYRSQKTSRLPIIDIAPM
 DIGGAEQEFGVDIGPVCF

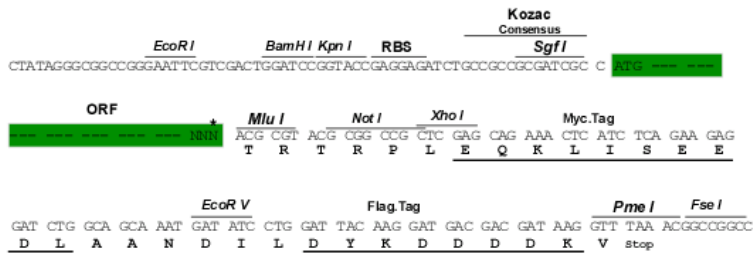
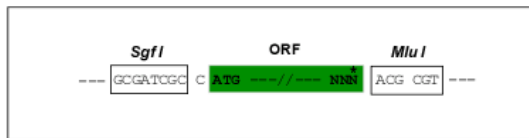
TRTRPLEQKLISEEDLAANDILDYKDDDDKV

Restriction Sites:

SgfI-MluI

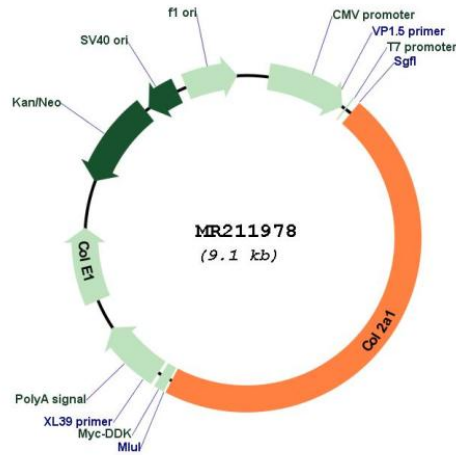
Cloning Scheme:

Cloning sites used for ORF Shuttling:



* The last codon before the Stop codon of the ORF

Plasmid Map:



ACCN: BC052326

ORF Size: 4257 bp

OTI Disclaimer: The molecular sequence of this clone aligns with the gene accession number as a point of reference only. However, individual transcript sequences of the same gene can differ through naturally occurring variations (e.g. polymorphisms), each with its own valid existence. This clone is substantially in agreement with the reference, but a complete review of all prevailing variants is recommended prior to use. [More info](#)

OTI Annotation: This clone was engineered to express the complete ORF with an expression tag. Expression varies depending on the nature of the gene.

Components: The ORF clone is ion-exchange column purified and shipped in a 2D barcoded Matrix tube containing 10ug of transfection-ready, dried plasmid DNA (reconstitute with 100 ul of water).

Reconstitution Method:

1. Centrifuge at 5,000xg for 5min.
2. Carefully open the tube and add 100ul of sterile water to dissolve the DNA.
3. Close the tube and incubate for 10 minutes at room temperature.
4. Briefly vortex the tube and then do a quick spin (less than 5000xg) to concentrate the liquid at the bottom.
5. Store the suspended plasmid at -20°C. The DNA is stable for at least one year from date of shipping when stored at -20°C.

RefSeq: [BC052326.1](#)

RefSeq Size: 4856 bp

RefSeq ORF: 4259 bp

Locus ID: 12824

Cytogenetics: 15 53.97 cM

MW: 178 kDa

Gene Summary: This gene encodes the alpha-1 subunit of the fibril-forming type II collagen, the major component of cartilage and the vitreous humor of the eye. The encoded preproprotein forms homotrimeric, triple helical procollagen that undergoes proteolytic processing during fibril formation. Mice harboring certain mutations in this gene exhibit severe chondrodysplasia characterized by short limbs and trunk, craniofacial deformities and cleft palate. A complete lack of the encoded protein in mice results in postnatal lethality. Alternative splicing results in multiple transcript variants encoding different isoforms that may undergo similar proteolytic processing. [provided by RefSeq, Dec 2015]