

## Product datasheet for MR211965

### Ncoa3 (NM\_008679) Mouse Tagged ORF Clone

#### Product data:

Product Type:	Expression Plasmids
Product Name:	Ncoa3 (NM_008679) Mouse Tagged ORF Clone
Tag:	Myc-DDK
Symbol:	Ncoa3
Synonyms:	2010305B15Rik; Actr; Aib1; AW321064; bHLHe42; KAT13B; p/Cip; pCip; Rac3; Src3; Tram-1; Tram1
Mammalian Cell Selection:	Neomycin
Vector:	pCMV6-Entry (PS100001)
E. coli Selection:	Kanamycin (25 ug/mL)
ORF Nucleotide Sequence:	>MR211965 representing NM_008679 Red=Cloning site Blue=ORF Green=Tags(s)

TTTTGTAATACGACTCACTATAGGGCGGCCGGAATTCGTCGACTGGATCCGGTACCGAGGAGATCTGCC  
GCCGCGATCGCC

ATGAGTGGACTAGGCGAAAGCTCTTTGGATCCGCTGGCCGCTGAGTCTCGGAAACGCAAACCTGCCCTGTG  
ATGCCCCAGGACAGGGGCTTGTCTACAGTGGTGAAGTGGCGACGGGAGCAGGAGCAAGTACATAGA  
GGAGCTGGCAGAGCTCATCTCTGCAAAATCTCAGCGACATCGACAACCTCAATGTCAAGCCAGATAAATGT  
GCCATCTAAAGGAGACAGTGAGACAGATACGGCAAATAAAGAACAAGGAAAACTATTTCCAGTGATG  
ATGATGTTCAAAAAGCTGATGTGCTTCTACAGGGCAGGGAGTCATTGATAAAGACTCTTAGGACCGCT  
TTTACTACAGGCACTGGATGGTTTCTGTTTGTGGTGAATCGAGATGGAAACATTGTATTCGTGTCAGAA  
AATGTCACACAGTATCTGCAGTACAAGCAGGAGGACCTGGTTAACACAAGTGTCTACAGCATCTTACATG  
AGCAAGACCGGAAGGATTTCTTAAACACTTACCAAAATCCACAGTAAATGGAGTTTCTTGGACTAATGA  
GAACCAGAGACAAAAAGCCATACATTTAATTGTCGTATGTTGATGAAAAACACACGACATTTTGGAGAGC  
GTGAATGCCAGTCCCGAAACACGCCAGAGATATGAAACAATGCAGTGCCTTGGCCCTGTCTCAGCCTCGCG  
CTATGCTGGAAGAAGGAGAAGACTTGCAGTGTGTATGATCTGCGTGGCTCGCCGCTGACTGCGCCATT  
CCCATCCAGTCTGAGAGCTTTATTACCAGACATGACCTTCCGGAAAGGTTGTCAATATAGATACAAAC  
TCACTTAGATCTCCATGAGGCCTGGCTTTGAAGACATAATCCGAAGATGTATCCAGAGGTTCTTCAGTC  
TGAATGATGGGCAGTCATGGTCCCAGAAGCGTCACTATCAAGAAGCTTATGTTTATGGCCACGCAGAGAC  
CCCCGTGATCGTTTCTCCTTGGCTGATGGAACATTGTGAGTGGCAGACAAAAAGCAAACCTTCCGC  
AATCCTGTAACGAATGATCGTACGGCTTCATCTCGACCCACTTCTTCCAGAGAGAACAGAATGGATACA  
GACCAAAACCCAAATCCCGCAGGACAAGGCATCCGACCTCCTGCAGCAGGGTGTGGCGTGAGCATGTCTCC  
AAATCAGAATGTACAGATGATGGCAGCCGGACCTATGGCGTGCCAGACCCAGCAACACAGGGCAGATG  
GGTGGAGCTAGGTACGGGCTTCTAGTAGCGTAGCCTCACTGACGCCAGGACAAAGCCTACAGTCGCCAT  
CTTCTATCAGAACAGCAGCTATGGGCTCAGCATGAGCAGTCCCCCACGGCAGTCTGGTCTTGGTCC



CAACCAGCAGAACATCATGATTTCCCCTCGGAATCGTGGCAGCCCAAAGATGGCCTCCCACCAGTTCTCT  
 CCTGCTGCAGGTGCACACTCACCCATGGGACCTTCTGGCAACACAGGGAGCCACAGCTTTTCTAGCAGCT  
 CCCTCAGTGCCTTGAAGCCATCAGTGAAGGCGTGGGGACCTCTCTTTTACTACTCTGTCTCACCAGG  
 CCCAAACTGGATAATTCTCCAATATGAATATAAGCCAGCCAAGTAAAGTGAGTGGTCAGGACTCTAAG  
 AGCCCCTAGGCTTACTGTGAACAGAATCCAGTGGAGAGTTCAGTGTGTCTCAGTCAAACAGCAGAGATC  
 ACCAAAGTGAAAAAGAAAGCAAGGAGAGCAGTGGGGAGGTGTAGAGACGCCAGGGGACCTCTGGAAAG  
 CAAAGGCCACAAGAAACTGCTGCAGTTACTCACGTGCTCCTCCGACGACCGAGGCCATTCCTCTTGACC  
 AACTCTCCCCTGGATCCAAACTGCAAAGACTCTTCCGTTAGTGTACCAGCCCTCTGGAGTGTCCCTCT  
 CAACATCAGGGACAGTGTCTTCCACCTCCAATGTGCATGGGTCTCTGTTGCAAGAGAAACACCGGATTTT  
 GCACAAGTTGCTGCAGAAATGGCAACTCCCAGCGGAGGTCCGCAAGATCACTGCAGAGGCCACTGGGAAG  
 GACACGAGCAGCACTGCTTCTGTGGAGAGGGGACAACCAGGCAGGAGCAGCTGAGTCTAAGAAGAAGG  
 AGAATAATGCTCTGCTTAGATACCTGCTGGACAGGGATGACCCCACTGATGTGCTTGCCAAAGAGCTGCA  
 GCCCAGGCCGACAGTGGGGACAGTAACTGAGTCACTGCAGCTGCTCCACCAATCCCAGCTCTGGCCAA  
 GAGAAAGACCCCAAAATTAAGACCGAGACGAACGAGGAGGTATCGGGAGACCTGGATAATCTAGATGCCA  
 TTCTTGGAGATTTGACCAGTTCTGACTTCTACAACAATCTACAATGGCGGTCAACCAGGGGCCAAACA  
 GCAGATGTTTGCAGGACCGAGTTCTCTGGGTTTGCAGAGTCCACAGCCTGTGCAGTCTGTTGCTCTCCA  
 TATAACCGAGCGGTGCTCTGGATAGCCCTGTGTCTGTTGGCTCAGGTCCGCCAGTGAAGAATGTCAGTG  
 CTTTCCCCTGGGTTACCAAAACAGCCCACTACTGGCTGGGAATCCAAGAATGATGGATAGTCAGGAGAATTA  
 CGGTGCCAACATGGGCCCAACAGAAATGTTTCTGTGAATCCGACTTCTCCCCCGGAGACTGGGGCTTA  
 GCTAACTCAAGGGCCAGCAGAATGGAGCCTCTGGCATCAAGTCCCTGGGAAGAACTGGAGCCGATTACA  
 GTGCCACTTTACCCAGACCTGCCATGGGGGCTCTGTGCCTACCTTGGCACTTCGTTCTAATCGACTGCC  
 AGGTGCAAGACCATCGTTGCAGCAACAGCAGCAGCAACAGCAGCAACAGCAACAACAGCAGCAACAG  
 CAGCAGCAACAGCAGCAGCAGCAACAGCAGCAGATGCTTCAAATGAGAAGTGGTGAGATTTCCATGGGAA  
 TGGGAGTCAATCCCTATAGCCCAGCAGTGCCTTAACCAACCAGGTTCCTGGCCAGAGGCATGCTCTC  
 TATGGAACAAGGTCTCACGGGTCTCAAAATAGGCCTTCTTCTAGAAACTCTCTGGATGATCTGTTGGG  
 CCACCTTCTAACGCAGAGGGCCAGAGTGACGAGAGAGCTCTGCTGGACCAGCTGCACACACTCTGAGCA  
 ACACAGATGCCACAGGTCTGGAGGAGATCGACAGGGCCTTGGGAATTCCTGAGCTCGTGAATCAGGGACA  
 AGCTTTGGAGTCCAAACAGGATGTTTTCAAGGCCAAGAAGCAGCAGTAATGATGGATCAGAAGGCTGCA  
 CTATATGGACAGACATACCCAGCTCAGGGTCTCCCCTCAAGGAGGCTTTAACCTTCAGGGACAGTCAC  
 CATCGTTAACTCTATGATGGGTCAGATTAGCCAGCAAGGCAGCTTCTCTGCAAGGCATGCATCCTAG  
 AGCCGGCCTCGTGAGACCAAGGACCAACACCCGAAGCAGCTGAGAATGCAGCTTCAGCAGAGGCTACAG  
 GGCCAGCAGTTTTTAAATCAGAGCCGGCAGGCACTTGAAATGAAAATGGAGAACCCTGCTGGCACTGCTG  
 TGATGAGGCCATGATGCCCCAGCAGGCTTTCTTAAATGCCAAATGGCTGCCAGCAGAAACGAGAGCT  
 GATGAGCCATCACCTGCAGCAGCAGAGGATGGCGATGATGATGTCACAACCACAGCCTCAGGCCTTCAGC  
 CCACCTCCAACGTCAACCGCTCCCCAGCATGGACGGGGTTTTGGCAGGTTTCAGCAATGCCGCAAGCCC  
 CTCCACAACAGTTTCCATATCCAGCAAATTACGGAATGGGACAACCACCAGAGCCAGCCTTTGGTCGAGG  
 CTCGAGTCTCCAGTGAATGATGTCAAGAATGGGGCTTCCAGAATGCCATGGTGCAGCATCCT  
 CAGCCCACACCCATGATCAGCCTTCAAGATGAAGGGGTGGCCGTGAGGAACTGGCCAGGAATGGCT  
 CCTTCCCCCAGCAGCAGTTTGTCCCCAGGGGAACCCTGCAGCCTACAACATGGTGCATATGAACAGCAG  
 CGGTGGGCACTTGGGACAGATGGCCATGACCCCATGCCATGTCTGGCATGCCATGGGCCCGATCAG  
 AAATACTGC

ACGCGTACGCGGCCGCTCGAGCAGAACTCATCTCAGAAGAGGATCTGGCAGCAAATGATATCCTGGATT  
 ACAAGGATGACGACGATAAGGTTTAA

Protein Sequence: >MR211965 representing NM\_008679  
 Red=Cloning site Green=Tags(s)

```

MSGLGESSLDPLAAESRKRKLPDAPGQGLVYSGEKWRREQESKYIEELAE LISANLSDIDNFNVKPKDK
AILKETVRQIRQIKEQGKTISSDDDVQKADVSTGQGVIDKDSLGPLLLQALDGLFVFNDRDGNIVFVSE
NVTQYLQYKQEDLVNTSVYSILHEQDRKDFLKHLPKSTVNGVSWTNNENQRQKSHTFNCRMLMKTHDILED
VNASPETRQRYETMQCFALSQPRAMLEEGEDLQCCMICVARRVTAPFPSSPESF ITRHDLSGKVVNIDTN
SLRSSMRPGFEDIIRRCIQRFFSLNDGQSWSQKRHYQEAYVHGHAETPVYRFLADGTIVSAQTKSKLFR
NPVTDNRHGFISTHFLQREQNGYRPNPNPAGQGIRPPAAGCGVSMSPNQNVQMMGSRTYGVDPDPSNTGQM
GGARYGASSVSLTPGQSLQSPSSYQNSSYGLSMSSPPHGSPGLGPNQQNIMISPRNRGSPKMASHQFS
PAAGAHSPMGPSGNTGSHSFS SSSLSALQAISEGVGTSLLSTLSSPGPKLDNSPNMNI SQPSKVSQGDSK
SPLGLYCEQNPVESSVCQNSRDHPSEKESKESSEGEVSETPRGPLESKGHKLLQLLTCSSDDRGHSSLT
NSPLDPNCKDSSVSVTSPSGVSSSTSGTVSSTSNVHGSLLQEKHRI LHKLLQNGNSPAEVAKITA EATGK
DTSSTASCGETTRQEQ LSPKKKENNALLRYLLDRDDPSDVLAKELQPQADSGDSKLSQCSCSTNPSGQ
EKDPKIKTETNEEVSGDLNDLDA I LGDL TSSDFYNNPTNGGHPGAKQMFAGPSSLGLRSPQPVQSVRPP
YNRAVSLDSPVSVSGSPVKNVSAFPGLPKQPILAGNPRMMSQENYGANMGNPNRNPVNPNTSSPGDWGL
ANSRASRMEPLASSPLGRTGADYSATLPRPAMGGSVPTLPLRSNRLPGARPSLQQQQQQQQQQQQQQQQ
QQQQQQQQQQMLQMRTEI PMGMGVNPYSPA VPSNQPGSWPEGML SMEQPHG SQNRPLL RNSLDDLLG
PPSNAEQSDERALLDQLHTLLSNTDATGLEEIDRALGIPELVNQGQALESKQDV FQGQEA AVMMMDQKAA
LYGQTYPAQGPPLQGGFNLQGGSPSFSNMMGQISQQGSFPLQGMHPRAGLVRPRTNTPKQLRMQLQRLQ
GQQFLNQSRQALEMKMENPAGTAVMRPMPQQAFFNAQMAAQKRELM SHHLQQQRMAMMSQPQPQAFS
PPPNTVTSMDGVLAGSAMPQAPPQFPYPANYGMGQPPEPAFGRGSSPPSAMMS SRMGPSQNAVQHP
QPTPMYQPSDMKGWPSGNLARNGSFPQQQFAPQGNPAA YNMVHMN SSGHGLQMAMTPMPMSGMPMPDQ
KYC
    
```

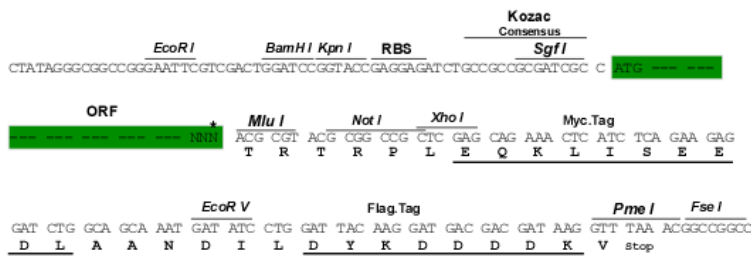
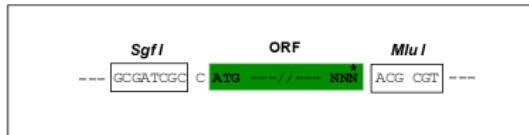
TRTRPLEQKLISEEDLAANDILDYKDDDDDKV

Chromatograms: [https://cdn.origene.com/chromatograms/mm9037\\_d06.zip](https://cdn.origene.com/chromatograms/mm9037_d06.zip)

Restriction Sites: Sgfl-MluI

Cloning Scheme:

Cloning sites used for ORF Shuttling:



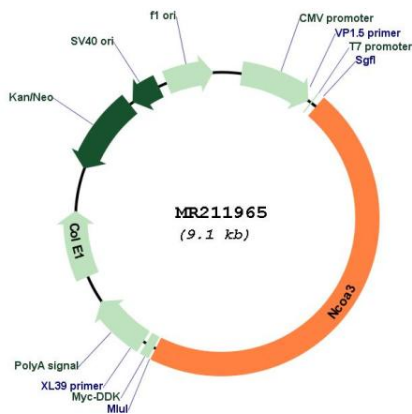
\* The last codon before the Stop codon of the ORF

ACCN: NM\_008679

ORF Size: 4209 bp

- OTI Disclaimer:** The molecular sequence of this clone aligns with the gene accession number as a point of reference only. However, individual transcript sequences of the same gene can differ through naturally occurring variations (e.g. polymorphisms), each with its own valid existence. This clone is substantially in agreement with the reference, but a complete review of all prevailing variants is recommended prior to use. [More info](#)
- OTI Annotation:** This clone was engineered to express the complete ORF with an expression tag. Expression varies depending on the nature of the gene.
- Components:** The ORF clone is ion-exchange column purified and shipped in a 2D barcoded Matrix tube containing 10ug of transfection-ready, dried plasmid DNA (reconstitute with 100 ul of water).
- Reconstitution Method:**
1. Centrifuge at 5,000xg for 5min.
  2. Carefully open the tube and add 100ul of sterile water to dissolve the DNA.
  3. Close the tube and incubate for 10 minutes at room temperature.
  4. Briefly vortex the tube and then do a quick spin (less than 5000xg) to concentrate the liquid at the bottom.
  5. Store the suspended plasmid at -20°C. The DNA is stable for at least one year from date of shipping when stored at -20°C.
- RefSeq:** [NM\\_008679.3](#), [NP\\_032705.2](#)
- RefSeq Size:** 7571 bp
- RefSeq ORF:** 4212 bp
- Locus ID:** 17979
- Cytogenetics:** 2 H3
- MW:** 152.4 kDa

**Product images:**



Circular map for MR211965