

Product datasheet for MR211931

Mink1 (BC052474) Mouse Tagged ORF Clone

Product data:

Product Type: Expression Plasmids
Product Name: Mink1 (BC052474) Mouse Tagged ORF Clone
Tag: Myc-DDK
Symbol: Mink1
Synonyms: B55, MINK, RP23-122P1.6
Mammalian Cell Selection: Neomycin
Vector: pCMV6-Entry (PS100001)
E. coli Selection: Kanamycin (25 ug/mL)
ORF Nucleotide Sequence: >MR211931 ORF sequence
 Red=Cloning site Blue=ORF Green=Tags(s)

TTTTGTAATACGACTCACTATAGGGCGGCCGGAATTCGTCGACTGGATCCGGTACCGAGGAGATCTGCC
 GCC**CGATCGCC**

ATGGGCGACCCAGCCCCCGCCGACGCTGGACGACATCGACCTGTCTGCCCTGCGGGACCTGCAGGAA
 TCTTTGAGCTGGTGGAGGTGGTTGGCAATGGAACCTATGGACAGGTATACAAGGGCGGCACGTCAAGAC
 TGGGCAGCTGGCTGCCATTAAGGTCATGGATGTCACAGAGGATGAGGAGGAAGAGATCAAACAGGAAATC
 AACATGTTAAAGAAGTACTCTACCATCGCAATATTGCCACCTACTATGGGGCCTTTATCAAGAAGAGCC
 CTCTGGGAACGATGACCAGCTGGCTGGTGATGGAGTTCTGCGGTGCTGGTTCAGTGACCGACCTGGT
 AAAGAACACAAAAGGGAACGCACCTGAAGGAGGATTGCATTGCTTACATCTGCAGGGAGATTCTCAGGGGT
 CTTGCCCATCTCCATGCCACAAGGTGATCCACAGAGATATCAAGGGACAAAATGTGCTGCTGACAGAGA
 ATGCTGAAGTCAAGCTAGTGGATTTTGGGGTGAAGTCTCAGCTGGACCGCACTGTGGGCAGGCGGAACAC
 TTTTATTGGAACCCATACTGGATGGCTCCAGAAGTCAATGCCTGTGACGAGAACCCCGATGCCACCTAT
 GACTACAGGAGTGACATTTGGTCTCTAGGAATCACAGCCATTGAAATGGCAGAGGGAGCCCCCTCTGT
 GTGACATGCACCCTATGCGGGCCCTCTTCTCATCCCTCGGAACCCTCCCCCAGGCTCAAGTCAAAGAA
 ATGGTCTAAGAAGTTCAGTACTCATCGACACGTGTCTCATCAAGACTTACCTGAGCCGCCACCCACC
 GAACAGTTACTCAAATTCCTTCCATCCGAGACCAGCCACGGAGCGGCAGGTCCGCATCCAGCTCAAGG
 ACCACATCGACCCTCGCGGAAGAAGCGGGAGGAGACAGAGTATGAGTACAGCGGCAAGTGAAGGAAGA
 CGACAGCCATGGAGAGGAAGCGGAGCAAGCTCCATCATGAATGTGCCCGGTGAGTCCACACTGCGCAGA
 GAATTCCTCAGACTCCAGCAGGAGAATAAGAGCAACTCTGAGGCTTTAAAGCAGCAGCAGCAGCTGCAGC
 AACAGCAGCAGCGGGACCCGGAGGCACACATCAAACACCTGTGCACCAGCGGCAGCGTCGCATAGAGGA
 GCAGAAGGAGGAGCGGCACGTGTGGAGGAGCAACAGCGGCGAGAGCGAGAACAGCGTAAGCTACAAGAG
 AAGGAGCAGCAGCGCGATTGGAAGACATGCAAGCCCTACGACGAGAGGAAGAGAGGCGGAAGCAGAGC
 GGGAACAGGAATACAAGCGGAAGCAGCTGGAGGAGCAGCGGCAGTCAGAGCGGCTGCAGAGACAGCTGCA
 GCAGGAGCAGCCTACCTCAAGTCCCTGCAGCAGCAGCAGCAGCAGCAGCAGCTCCAGAAGCAGCAGCAG



CAGCAGCAGCAGATCCTGCCTGGAGACAGGAAGCCCCTGTATCATTACGGTCGGGGCATTAACTCCTGCTG
ACAAGCCAGCATGGGCCCGCAGGTGGAAGAGAGACACGGATGAACAAGCAGCAGAAGCTCTCCCTTGGC
GAAGGCCAAGCCAAGCAGTGCAGGGCCAGAGCCCCCATCTCCAGGCCTCTCCTAGCCCCCAGGACCT
CTTTCCAGACTCCTCTATGCAGAGCCCTGTGGAGCCCCAGGAAGACCACACAAGAGCCTGGTGGCAC
ACCGGGTCCCAGTGAAGCCATATGCAGCACCTGTACCCCGATCCCAGTCCCTGCAGGACCAGCCGACTCG
AAACCTGGCTGCCTTCCCAGCCTCCCACGACCCAGACCCTGCTGCTGCTCCCTACACCCACTGCCACACCC
AGTGGCCGAGGAGCTGTATCCGCCAGAATTCAGACCCACCTCTGAAGGGCCAGGGCCTAGCCCCAAACC
CTCCATCCTGGGTTCCGGCTGATAATGAGGCTCCACCTAAGGTTCCACAGAGGACCTCTTCTATCGCCAC
TGCCCTTAACACCAGTGGGGCCGAGGGTCCCGCCAGCTCAGGCTGTCCGTGCCAGACCTCGCAGTAAC
TCCGCTGGCAAATCTATCTGCAGAGCCGGCAGAGCGGGGACCCCCAAGCCTCCCGGGCCCCAGCTC
AGCCCCCTGGCCGCCAACGCCTTAGTAACCCTGACCTCAGGAGGAGTGACCTGGCTGGGAGCGCTC
AGACAGTGTCTCCCGCCTCCCAGGCCACCTCCCTCAGGCTGGCTCCTGGAGCGAACCAGAACCGT
GTGGGAGCCTCCACAAAAGTGGATAGCTCTCCAGTGTCTCCCTGGGAACAAAGCCAAGCCTGAAGACC
ACCGCTCAAGGCCAGGCCGGCCCGCAGACTTTGTGTTGCTCAAAGAGCGGACTCTGGATGAGGCCCTAA
GCCTCCCAAGAAGCCATGGACTACTCCTCATCCAGTGAAGAGGTTGAAAGCAGTGAAGAGGAGGAGGAG
GAAGGCCATGGGAGCCGTCAGAGGGGAGCAGAGACACTCCCGGGGCCGAGTGTGGTATACAGACA
GCGTCAGCACCATGGTGGTTCATGATGTTGAGGAGATATCCGGGACCCAGCCCTCATATGGCGGGCCAC
CATGGTGGTCCAGCGTACTCCTGAAGAGGAACGAAGCCTGCTGCTTGCTGATAGCAATGGCTACACAAAAC
CTGCTGATGTGGTCCAGCCAGCCACTCACCTACTGAGAACAGCAAAGTCAAAGCCCTCCAACAAAGG
ATGGAGGCAGTGATTACCAGTCTCGTGGGCTGGTAAAGGCCCCAGGAAAGAGTCAATCACCATGTTTGT
GGATCTAGGGATCTACCAGCCTGGAGGCAGTGGGACACCATCCCTATCACAGCCCTAGTGGGTGGAGAA
GGTGGTGCCTTGATCAACTGCAGTTCGATGTGAGGAAGGGCTCTGTGGTCAACGTCAATCCCACCAACA
CCCGAGCTCATAGTAAACTCCTGAAATTCGCAAGTACAAGAAGCGATTCAACTCAGAGATCCTATGTGC
AGCTCTCTGGGGGTCAACCTCCTAGTGGGCACAGAGAATGGGCTGATGTTGCTGGACCGAAGTGGGCAG
GGCAAGGTGATGGACTTATTGGGCGACGACGCTTCCAGCAAATGGATGTCTTAGAAGGGCTCAACTTGC
TCATCACCATCTCAGGAAAAGGAACAAACTGCGGGTATATTACCTGTCTGGCTTCGGAACAAGATCCT
ACACAATGACCCAGAGGTGGAAGAAGCAGGGGTGGACCACCGTGGGGGACATGGAGGGCTGCGGCCAC
TACCGTGTGTGAAATATGAACGGATTAAGTTCCTGGTCAATGCCCTGAAGAACTACGTGGAGGTTTATG
CCTGGGCTCCCAAACCCTACCACAAATTCATGGCCTTCAAGTCTTTGCTGACCTCCCTCACCGCCCTCT
ACTGGTGGACCTGACAGTAGAGGAGGGACAGCGGCTCAAGGTCATCTATGGCTCCAGTGTGGCTCCAT
GCTGTGGATGTTGATTCTGGGAACAGCTATGACATCTACATCCCTGTACATATCCAGAGCCAGATCACAC
CCCACGCCATCATCTTCTCCCAACACTGATGGCATGGAGATGCTGCTGTGCTATGAAGATGAGGGTGT
CTATGTCAACACTTACGGGCGGATCATCAAGGATGTGGTGTGCTGCAAGTGGGAGAGATGCCACCTCTGTG
GCCTACATCTGCTCCAACCAGATAATGGGCTGGGGTGAGAAGGCCATAGAGATCCGCTCTGTGGAGACAG
GCCACCTAGATGGGGTCTTATGCACAAACGAGCCAGAGGCTCAAGTTCCTGTGTGAGCGCAATGACAA
GGTGTTTTTGCTCTGTCCGCTCTGGAGGAAGCAGCCAAGTTTACTTTTACTTATGACTCTGAACCGTAACTGC
ATCATGAACTGG

ACGCGTACGCGGCCGCTCGAGCAGAAACTCATCTCAGAAGAGGATCTGGCAGCAAATGATATCCTGGATT
ACAAGGATGACGACGATAAGGTTTAA

Protein Sequence: >MR211931 protein sequence
 Red=Cloning site Green=Tags(s)

```

MGDPAPARSLDDIDL SALRDPAGIFELVEVVNGTYGQVYKGRHVKTGQLAAIKVMDVTEDEEEEIKQEI
NMLKKYSHHRNIATYYGAFIKKSPGNDQLWL VMEFCGAGSVTDLVKNTKGNALKEDCIAIYICREILRG
LAHLHAHKVIHRDIKQNVLL TENAEVKLVDFGVSAQLDRTVGRNRTF IGTPYWMAPVIACDENPDATY
DYRSDIWSLGITAIEMAEGAPPLCDMHPMRALFLIPRNPPRLKSKKWSKKFTDF IDTCLIKTYLSRPPT
EQLLKFPFIRDQPTERQVRIQLKDHIDRSRKKREETEYEGSGSEEDDSHGEEGEPSSIMNVPGESTLRR
EFLRLQQENKSNSEALKQQQQLQQQQRDPEAHIKHLLHQRRRIEEQKEERRRVEEQRREREQRKLQE
KEQQRRLQEDMQALRREEERRQAEREQEYKRKQLEEQRQSERLQRQLQEHAYLKSLQQQQQQQLKQQQ
QQQQILPGDRKPLYHYGRGINPADKPAWAREVEERARMNKQONSPLAKAKPSSAGPEPPISQASPPPGP
LSQTPPMQRPVEPQEGPHKSLVAHRVPLKPYAAPVPRSQSLQDQPTRNLAAFPASHDPDPAAVPTPTATP
SARGAVIRQNSDPTSEGGPSPNPPSWVRPDNEAPPKVPQRTSSIATALNTSGAGSRPAQAVRARPRSN
SAWQIYLQRRARERTPKPPGPPAQPQPPNASSNPDLRSDPGWERSDSVLPASHGHL PQAGSLERNRNR
VGASTKLDSSPVLSPGNKAKPEDHRSRGRPADFVLLKERTLDEAPKPPKAMDYSSSSEEVESSEEEEE
EGDGEPESEGRDTPGGRSDGDTDSVSTMVVDVEEISGTQPSYGGTMMVQRTPEEERSLLLADSNGYTN
LPDVVQPSHSPTENSKGQSPPTKDGGSDYQSRGLVKAPGKSSFTMFVDLGTYPGGSGDTPITALVGGG
GGRLDQLQFDVVRKGSVVNVNPTNTRAHSETPEIRKYKRFNSEILCAALWGVNLLVGTENGLMLLDRSGQ
GKVVYLGIRRRFQQMDVLEGLNLLITISGKRNLRVYYL SWLRNKLHNDPEVEKKQGWTTVGDMEGCGH
YRVVYERIKFLVIALKNYVEVYAWAPKPYHKFMAFKSFADLPHRPLLVDLTVEEGQRLKVIYGSAGFH
AVDVS DSGNSYDIYPVHIQSQITPHAIIFLPNTDGMEMLLCYEDEGVYVNTYGR I IKDVVLQWGMPTSV
AYICSNQIMGWGEKAIEIRSVETGHL DGVFMHKRAQRLKFLCERNDKVFFASVRSGGSSQYVFMTLNRNC
IMNW
  
```

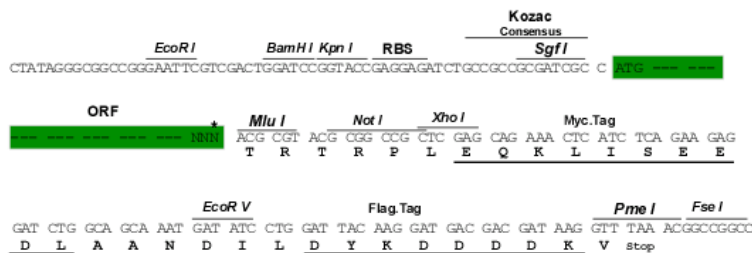
TRTRPLEQKLISEEDLAANDILDYKDDDDKV

Restriction Sites:

SgfI-MluI

Cloning Scheme:

Cloning sites used for ORF Shuttling:



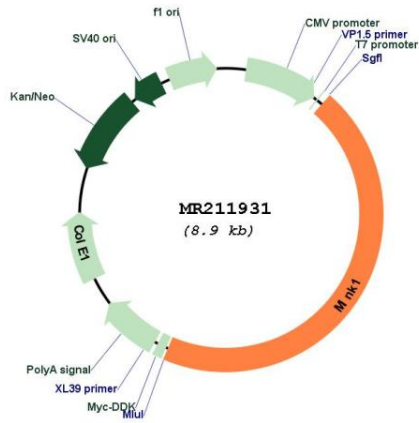
* The last codon before the Stop codon of the ORF

ACCN: BC052474

ORF Size: 4002 bp

OTI Disclaimer:	The molecular sequence of this clone aligns with the gene accession number as a point of reference only. However, individual transcript sequences of the same gene can differ through naturally occurring variations (e.g. polymorphisms), each with its own valid existence. This clone is substantially in agreement with the reference, but a complete review of all prevailing variants is recommended prior to use. More info
OTI Annotation:	This clone was engineered to express the complete ORF with an expression tag. Expression varies depending on the nature of the gene.
Components:	The ORF clone is ion-exchange column purified and shipped in a 2D barcoded Matrix tube containing 10ug of transfection-ready, dried plasmid DNA (reconstitute with 100 ul of water).
Reconstitution Method:	<ol style="list-style-type: none"> 1. Centrifuge at 5,000xg for 5min. 2. Carefully open the tube and add 100ul of sterile water to dissolve the DNA. 3. Close the tube and incubate for 10 minutes at room temperature. 4. Briefly vortex the tube and then do a quick spin (less than 5000xg) to concentrate the liquid at the bottom. 5. Store the suspended plasmid at -20°C. The DNA is stable for at least one year from date of shipping when stored at -20°C.
RefSeq:	BC052474 , AAH52474
RefSeq Size:	4842 bp
RefSeq ORF:	4004 bp
Locus ID:	50932
Cytogenetics:	11 B3
MW:	150.2 kDa
Gene Summary:	Serine/threonine kinase which acts as a negative regulator of Ras-related Rap2-mediated signal transduction to control neuronal structure and AMPA receptor trafficking. Required for normal synaptic density, dendrite complexity, as well as surface AMPA receptor expression in hippocampal neurons. Can activate the JNK and MAPK14/p38 pathways and mediates stimulation of the stress-activated protein kinase MAPK14/p38 MAPK downstream of the Raf/ERK pathway. Phosphorylates: TANC1 upon stimulation by RAP2A, MBP and SMAD1. Has an essential function in negative selection of thymocytes, perhaps by coupling NCK1 to activation of JNK1.[UniProtKB/Swiss-Prot Function]

Product images:



Circular map for MR211931