

Product datasheet for MR211914

Ace (NM_207624) Mouse Tagged ORF Clone

Product data:

Product Type:	Expression Plasmids
Product Name:	Ace (NM_207624) Mouse Tagged ORF Clone
Tag:	Myc-DDK
Symbol:	Ace
Synonyms:	AW208573; CD143
Mammalian Cell Selection:	Neomycin
Vector:	pCMV6-Entry (PS100001)
E. coli Selection:	Kanamycin (25 ug/mL)
ORF Nucleotide Sequence:	>MR211914 ORF sequence Red=Cloning site Blue=ORF Green=Tags(s)

TTTTGTAATACGACTCACTATAGGGCGGCCGGGAATTCGTCGACTGGATCCGGTACCGAGGAGATCTGCC
GCC**CGATCGCC**

ATGGGGCCCGCTCCGGCCAGCGGGGGCGGTGGCCGTTGTGCCTCCGCTCTTGATGCTGTCGCTGCTGG
TGCTGTTGCTGCAGCCGTCGCCCGCCCGGCACTCGACCCTGGATTGCAGCCGGGCAACTTTTCCCCGGA
CGAGGCAGGGGCGCAGCTTTTCGCTGAAAGCTATAACTCGAGTGCCGAGGTGGTATGTTCCAGAGCACC
GTGGCCAGTTGGGCGCAGCACCAACATCACGGAGGAGAACCGCGACGCCAGGAGGAAGCGGCCCTGG
TCAGCCAGGAGTTGCAGAGGTCTGGGCAAGAAGGCCAAGGAGTTGTATGAGTCCATTTGCGAGAACTT
TACTGACTCAAAGCTGCGAAGGATCATCGATCTATTCGGACCCTAGGACCTGCCAATCTGCCCTGGCC
CAGCGGCAGCAGTACAACCTCTGCTAAGCAACATGAGCAGAATCTACTCCACTGGCAAGGTCTGCTTCC
CCAACAAGACTGCCACCTGCTGGTCCCTGGACCCAGAGCTCACCAACATCCTGGCTTCTCACGAAGCTA
TGCCAAGTTGTTGCTGGGAGGGCTGGCATGATGCTGTGGGTATCCCACTGAAACCCCTCTATCAA
GACTTTACTGCCATCAGTAACGAAGCCTACAGACAAGACGACTTCTCAGACACAGGAGCCTTCTGGCGCT
CCTGGTATGAGTCCCCCTCCTTTGAGGAGAGTCTGGAACATATCTACCACCAACTAGAGCCCCTCTACCT
GAACCTCCATGCCTACGTCGCCCGGCACTGCACCGCCGCTATGGGGACAATAACGTCAATCTCAGGGGG
CCTATTCCTGCCATTTGCTGGGAGACATGTGGGCCAGAGCTGGGAGAACATCTACGACATGGTAGTGC
CTTTCCAGACAAACCAACCTCGATGTACCAGTACAATGGTACAGAAGGGCTGGAACGCCACACACAT
GTTCCGGGTATCAGAGGAATTCTCACCTCGCTGGGGCTCTACCCATGCCTCCTGAGTTCTGGGCGGAG
TCAATGCTGGAGAAACCAACGGATGGACGGGAGGTGGTGTGCCACGCCTCTGCCTGGGACTTCTACAACC
GGAAGGACTTCCGGATTAAGCAATGCACACGGGTACGATGGAACAGCTGGCCACAGTACACCACGAGAT
GGGCCACGTGCAGTACTACCTCCAGTACAAGGACCTGCACGTCTCTGCGTAGAGGTGCCAACCCCTGGC
TTCCATGAGGCCATTGGGGATGTGCTTGCCTCTCCGCTCTACCCCTGCACATCTGCACAAAATCGGCC
TACTGGACCATGTTACCAATGACATAGAGAGTGACATCAATTACCTGCTAAAGATGGCCCTAGAGAAAAT
CGCCTTCTGCCCTTTGGCTACCTGGTGGACCAGTGGCGTTGGGGGTCTTCAGTGGACGGACCCACCC



TCTCGCTACAACCTTCGACTGGTGGTATCTTCGAACCAAGTATCAGGGGATCTGCCACCAGTTGCCCGGA
ATGAAACCCATTTTATGCTGGAGCCAAGTTTCACATCCCAAACGTGACACCGTACATCAGGTAATTCGT
GAGCTTTGTGCTGCAGTTCAGTTCATCAAGCACTGTGCAAGGAGGCAGGCCACCAGGGCCCACTACAC
CAGTGTGACATCTACCAGTCCGCCAGGCGGGGCAAGCTCAAGCAGGTGTTGCAGGCTGGCTGCTCCA
GGCCCTGGCAGGAGTACTGAAGGACCTGGTAGGCTCAGATGCCCTGGATGCCAAGGCACTGCTGGAGTA
CTTCCAACCGGTACCCAGTGGCTGGAAGAGCAGAATCAGCGGAATGGCGAAGTCTAGGCTGGCCAGAG
AATCAGTGGCGTCCACCCTTACCCGACAACCTATCCAGAGGGCATTGACCTAGAGACTGATGAAGCCAAGG
CTGACAGGTTTCGTGGAAGAGTATGACCCGACAGCCCAAGTGTGTTGAACGAGTACGCAGAGGCCAACTG
GCAATATAACACCAACATTACCATAGAGGGCAGCAAGATCCTGCTTGAGAAAAGCACGGAGTATCCAAT
CACACCCTGAAATATGGCACCCGGGCAAGACATTTGATGTGAGCAACTTCAAACCTCTCCATCAAGC
GGATCATAAAGAAGCTTCAGAACCTGGACCGGGCAGTGTGCCTCCCAAGGAATTAGAAGAGTACAACCA
GATCCTGTAGACATGGAGACAACCTACAGCTTATCCAACATTTGCTACACAAATGGCACTTGTATGCC
CTGGAACCTGATTAACAAACATGATGGCCACATCCCGGAAATATGAAGAATTGCTATGGGCATGGAAGA
GCTGGAGAGACAAGGTGGGGAGAGCCATCTTCTTTTTTCCCAAAGTATGTGGAGTTCTCCAACAAGAT
TGCCAAGCTCAATGGCTACACGGATGCAGGGGATTCATGGAGATCCTTATACGAGTCTGACAACCTGGAG
CAAGACCTGGA AAAACTGTACCAGGAGCTGCAGCCACTTACCTGAACCTGCATGCCTATGTGCGTCTGT
CCCTGCACCGCCACTATGGGTCCGAGTACATCAACCTGGATGGCCCACTTCTGCCCCTGCTAGGGAA
CATGTGGGCGCAGACCTGGTCCAACATCTATGATTTGGTGGCGCCCTTCCCTTCCGCCCCAATATAGAT
GCCACGGAAGCCATGATAAAGCAGGGATGGACACCCAGAAGGATATTTAAGGAAGCTGACAAATTTCTTTA
CCTCCCTGGGGCTGTTACCTGTGCCCTTGAGTTCTGGAACAAGTCGATGTTAGAGAAGCCACCAGTGG
AAGGGAGGTGGTGGCCATCCCTCAGCTGGGACTTCTACAACGGCAAGGACTTCAGGATCAAGCAGTGT
ACCTCTGTGAACATGGAGACTTGGTGTAGCGCACACGAAATGGGCCACATCCAGTATTTTCATGCAGT
ACAAAGACTTACCCGTACTTCCGGGAGGGTGCCAACCTGGTTTTTCATGAAGCTATTGGAGATAAAT
GGCTCTCAGTGTCTACCCCAAGCATCTATACAGTCTCAACCTGCTTAGCACTGAGGGCAGTGGCTAC
GAGTATGACATCAACTTTCTAATGAAGATGGCCCTCGACAAGATCGCCTTTATCCCTTCAGCTACCTCA
TCGACCAGTGGCGCTGGAGGGTCTTTGATGGAAGCATCACAAGGAGAATAACCAGGAGTGGTGGAG
CCTCAGGCTGAAGTATCAGGGTCTGTGCCCCCAAGTGC CAAGATCCCAAGGTGACTTTGACCCAGGGTCC
AAGTTCACGTTCTCGAACGTGCCATACGTACGGTACTTTGTCAGCTTCATCATCCAGTTCAGTTC
ACGAGGCGCTGTGTCGCGCAGCCGGGCACACGGGTCCCCTGCACAAGTGTGACATCTACCAATCCAAGGA
AGCAGGGAAGCTCCTGGCGGATGCCATGAAGCTGGGCTACAGTAAGCCGTGGCCAGAGGCCATGAAGCTG
ATCACAGGCCAGCCTAACATGTCAGCCTCCGCCATGATGAATTACTTCAAGCCACTGACAGAATGGCTCG
TACCCGAGAACAGGAGACATGGAGAGACTGGGCTGGCCGGAGTACAACCTGGGCGCCAAACACCGCTCG
CGCAGAAGGCTCCACCGCAGAGTCCAACCGCTCAATTTCTGGGCTGTACCTGGAGCCACAGCAGGCC
CGCGTGGGCCAGTGGGTGCTGCTTCTTCTGGGCTCGCCCTGCTCGTGGCCACCCTGGGTCTCGCCATC
GGCTCTACAACATCCGTAACCATCACAGCTCCGCGGCCCCACCGTGGGCCCAAGTTGGGTCTGAGGT
GGAGCTCAGACTCC

ACGCGTACGCGGGCGCTCGAGCAGAACTCATCTCAGAAGAGGATCTGGCAGCAATGATATCCTGGATT
ACAAGGATGACGACGATAAGGTTTAA

Protein Sequence: >MR211914 protein sequence
 Red=Cloning site Green=Tags(s)

```

MGAASGQRGRWPLSPPLML SLLVLLLQSPAPALDPGLQPGNFSPDEAGAQLFAESYNSSAEVVMFQST
VASWAHDNTNITEENARRQEEAALVSQEF AEVWGKKAKELYESIWQNF TDSKLRRIGSIRTLGPANLPLA
QRQYNSLLSNMSRIYSTGKVCFPNK TATCWSLDPEL TNILASSRSYAKLLFAWEGWHDVAVGIPLKPLYQ
DFTAISNEAYRQDDFSDTGAFWRSWYESP SFEESLEHIYHQLEPLYLNLHAYVRRALHRRYGDKYVNLRG
PIPAHLLGDMWAQSWENIYDMVVPF PDKPNLDVTSTMVQKGNATHMFRVSEEFF TSLGLSPMPPEFWAE
SMLEKPTDGREVVCHASAWDFYNRKDFRIKQCTRV TMEQLATVHHEMGHVQYYLQYKDLHVSLRRGANPG
FHEAIGDVLALS VSTPAHLHKIGLLDHTNDIESDINYL LKMALEKIAFLPF GYLVDQWRWGVFSGRTPP
SRYNFDWWYLRTKYQGICPPVARNETHFDAGAKFHIPNVTPYIRYVFSVLQFQFHQALCKEAGHQGPLH
QCDIYQSAQAGAKLKQVLQAGCSR PWQEV LKDLVGS DALDAKALLEYFQPV SQWLEEQNRNGEVLGWPE
NQWRPPLPDNYPEGIDLETDEAKADRFVEEYDR TAOVLLNEYAEANWQYNTNITIEGSKILLEKSTEVSN
HTLKYGTRAKTFDVSNFQNSSIKRI IKKLQNLDR AVLPPKELEEYNQI LDMETTYSLSNICYTNGTCMP
LEPDLTNMMATSRKYEELLWAWKSWRDKVGR AILPFFPKYVEFSNKI AKLNGYTDAGDSWRSLYESDNLE
QDLEKLYQELQPLYLNLHAYVRRSLHRHYGSEY INLDGPIPAHLLGNMWAQTWSNIYDLVAPFPSPANID
ATEAMIKQGWTPRRIFKEADNFF TSLG LLPV PPEFWNKSMLEKPTDGREVVCHPSAWDFYNGKDFRIKQC
TSVNMEDLVIAHHEMGIHQYFMQYKDLPVTFREGANPGFHEAIGDIMALS VSTPKHLYSLNLLSTEGSGY
EYDINFLMKMALDKIAFIPFSYLIDQWRWRVFDG SITKENYNQEWWSRLKYQGLCPPVPRSQGFDPGS
KFHVPANVPYVRYVFSFIIQFQFHEALCRAAGHTGPLHKCDIYQSKEAGKLLADAMKLGYSKPWPEAMKL
ITGQPNMSASAMMNYFKPLTEWLV TENRRHGETL GWPEYNWAPNTARAEGSTAESNRVNLGLYLEPQQA
RVGQWVLLFLGVALLVATVGLAHLRYNIRNHSLRRPHRGPQFGSEVELRHS
  
```

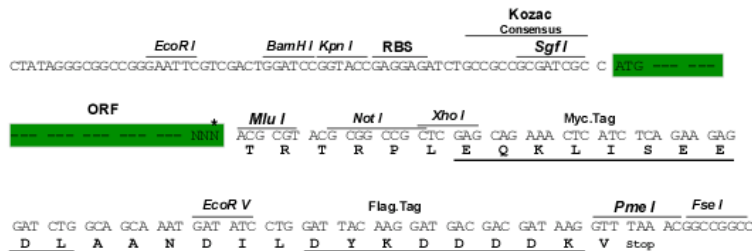
TRTRPLEQKLISEEDLAANDILDYKDDDDKV

Restriction Sites:

SgfI-MluI

Cloning Scheme:

Cloning sites used for ORF Shuttling:



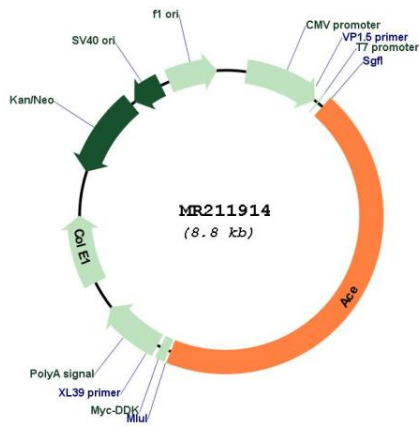
* The last codon before the Stop codon of the ORF

ACCN: NM_207624

ORF Size: 3939 bp

OTI Disclaimer:	The molecular sequence of this clone aligns with the gene accession number as a point of reference only. However, individual transcript sequences of the same gene can differ through naturally occurring variations (e.g. polymorphisms), each with its own valid existence. This clone is substantially in agreement with the reference, but a complete review of all prevailing variants is recommended prior to use. More info
OTI Annotation:	This clone was engineered to express the complete ORF with an expression tag. Expression varies depending on the nature of the gene.
Components:	The ORF clone is ion-exchange column purified and shipped in a 2D barcoded Matrix tube containing 10ug of transfection-ready, dried plasmid DNA (reconstitute with 100 ul of water).
Reconstitution Method:	<ol style="list-style-type: none"> 1. Centrifuge at 5,000xg for 5min. 2. Carefully open the tube and add 100ul of sterile water to dissolve the DNA. 3. Close the tube and incubate for 10 minutes at room temperature. 4. Briefly vortex the tube and then do a quick spin (less than 5000xg) to concentrate the liquid at the bottom. 5. Store the suspended plasmid at -20°C. The DNA is stable for at least one year from date of shipping when stored at -20°C.
RefSeq:	NM_207624.6
RefSeq Size:	4906 bp
RefSeq ORF:	3939 bp
Locus ID:	11421
UniProt ID:	P09470
Cytogenetics:	11 68.84 cM
MW:	150.9 kDa
Gene Summary:	Converts angiotensin I to angiotensin II by release of the terminal His-Leu, this results in an increase of the vasoconstrictor activity of angiotensin. Also able to inactivate bradykinin, a potent vasodilator. Has also a glycosidase activity which releases GPI-anchored proteins from the membrane by cleaving the mannose linkage in the GPI moiety. This GPIase activity seems to be crucial for the egg-binding ability of the sperm.[UniProtKB/Swiss-Prot Function]

Product images:



Circular map for MR211914