

## Product datasheet for MR211857

### Zmynd8 (NM\_027230) Mouse Tagged ORF Clone

#### Product data:

Product Type:	Expression Plasmids
Product Name:	Zmynd8 (NM_027230) Mouse Tagged ORF Clone
Tag:	Myc-DDK
Symbol:	Zmynd8
Synonyms:	1110013E22Rik; 2010005116Rik; 3632413B07Rik; AI316811; AL024039; Prkcbp1; RACK7
Mammalian Cell Selection:	Neomycin
Vector:	pCMV6-Entry (PS100001)
E. coli Selection:	Kanamycin (25 ug/mL)
ORF Nucleotide Sequence:	>MR211857 ORF sequence Red=Cloning site Blue=ORF Green=Tags(s)

TTTTGTAATACGACTCACTATAGGGCGGCCGGAATTCGTCGACTGGATCCGGTACCGAGGAGATCTGCC  
GCC**CGATCGCC**

ATGCATCCACAGAGCTTGGCTGAAGAGGAAATAAAAACCGAGCAGGAGGTGGTGGAGGGAATGGATATCT  
CTACTCGTCCAAAGAACCTAAGGAAGATCCTGTCTCTACAGAGAAAACGGCCCCGAAACGGAGGTTCCC  
CAGCCCTCCACATTCTCCAATGGCCATTCGCCCAAGACTCATCCACGAGCCCCATTAAGAAAAAG  
AAACCCGGCTTACTCAACAGTAGCAATAAGGAACAGTCAGAGCTAAGACATGGTCCGTTTTACTATATGA  
AGCAGCCACTCACCACAGACCCTGTTGATGTTGTACCGCAGGACGACGGAATGACTTCTATTGCTGGGT  
TTGTCACCGGGAAGGACAAGTCCTTTGCTGTGAGCTCTGTCCCGGGTTATCACGCTAAGTGTCTGAGA  
CTGACATCGGAGCCAGAGGGGACTGGTTTTGTCTGAATGTGAGAAGATTACAGTAGCAGAATGCATCG  
AGACGCAGAGCAAAGCCATGACCATGCTGACCATTTGAACAAGTGTCTACCTGCTCAAGTTTGCCATTCA  
GAAAATGAAGCAGCCAGGGACGGATGCATTCCAGAAGCCTGTTCCATTGGAGCAACACCCTGACTATGCA  
GAATATATTTCCACCCCATGGACCTTTGTACATTGGAAGAAGATGCAAAAAGAAGATGTACGGCTGCA  
CAGAAGCCTTCTGGCCGATGCCAAGTGGATCCTGCACAAGTGCATTATTTTTAATGGGGGAAATCACAA  
GTTGACGCAAAATGCAAAAAGTCGTATCAAAATCTGTGAGCACGAGATGAATGAAATCGAAGTCTGTCCA  
GAATGTTATCTTGACGCTTGCCAAAACGAGACAAGTGGTCTGTGAGCCCTGTAGCAATCCGCACCCTT  
TGGTCTGGGCAAAAAGTGAAGGATTTCCATTCTGGCCAGCGAAAAGCTCTGAGGGACAAAGACGGGAGGT  
TGACGCCCCGTTTTCTTTGGACAACATGACAGAGCCTGGGTTCCAGTCAATAATTGCTACCTCATGTCTAAA  
GAAATCCCCTTTTCTGTGAAAAGACTAAAAGTATCTTCAACAGCGCCATGCAAGAGATGGAAGTTTACG  
TGGAGAACATACGGAGGAAGTTTGGGTTTTTAATTAATCTCCCGTTCCAGGACGCCCTACACGCCCAACA  
CCAGTACCAAATGCTGCTGGATCCAGCAACCCAGCGCGGCACAGCCAAGACAGACAAACAGGAGAAG  
GTGAAGCTTAATTTTACATGACAGCGTCCCCAAGATCCTTCTGAGCAAGCCCCCTCTGAGCGGGGGT  
CCGGCCGACGATCTCCCTGTCCGACATGCCTCGCTCCCCACCAGTACGAACTCTCCGTGCACACGGG  
CTCCGATGTGGAGCAGGACCCCGAGAAGAAGGCCCGTCCAGCCACTTCAGCGCAAGCGAGGAGTCCATG



[View online >](#)

GACTTCCTTGATAAGAGCACAGCTTCTCCAGCCTCCACCAAGACGGGGCAAGCCGGGAGCTTGTCTGGCA  
 GCCCAAAGCCTTTCTCTCCGCAAGCGCCGACCCCATCATGACAAAACCCGACAAGACTTCCACCTCCAC  
 CACCGGGAGCATCCTGAACCTGAACTTGGATCGAAGCAAGGCCGAGATGGACCTGAAGGAGCTGAGCGAG  
 TCGGTCCAGCAGCAGTCAGCCCCGTCCCTCTCATCTCTCCAAAGCGGCAGATTCGAAGCCGGTTCACGC  
 TCAACCTGGACAAGACCATAGAGAGTTGCAAAGCACAGCTAGGCATAAATGAGATCTCAGAGGATGTTTA  
 TACAGCCGTGGAGCACAGCGATTCCGAGGACTCCGAAAAGTCCGAGAGCAGCGACAGCGAGTACGTACAG  
 GATGAGGAACAGAAGCCCAAGAATGAGCCCGAGACCCCGAGGACAAAGAGGGGAGTCGGGTGGACAAAG  
 AGGCCCTGCCATCAAAAGGAAGCCAAACCCACAAACCAGGTAGAGGTCAAAGAGGAAGCGAAGAGCAA  
 CTCTCCTGTGAGCGAGAAGCCGACCCACACCCGCAAGGACAAGGCCAGCCCAGAGCCTGAGAAGGAC  
 TTTGTAGAGAAAGCAAAGCCATCACCTCATCCCAAAAGGACAAACTGAAAGGAAAGGATGAAACGGATT  
 CTCCCACAGTGCACCTTGGGCTTGGATTCCGACTCGGAGAGCGAACTTGTATAGACTTAGGAGAGGATCC  
 TTCTGGGAGGGAGGTCGAAAAACAAGAAAGATCCCAAGGTGCCGTGCGCTAAGCAAGACGCTATAGGT  
 AAACCGCCACCGTCGTCCACTTCGGCGGGCAACCAGTCTCCCCAGAGACACCGGTACTCACCCGCTCAG  
 CCACCAAGCACCCGCGGTGGGGTACCCTGGCCGCCACCACCAGCAGATGTCTACCGTACAGT  
 CACGGCACCGGCCACCGCTCACGGGAAGCCCGTGAAGAAGCAGAGGCCGCTTTACCGAAGGAGACT  
 GTCCAGCTGTGAGCGGGTCTGTGGAACGCATCAAGTAAGTTTCAAAGTCTCTCCAAAAGTGGCACA  
 TGCAAGATACAGCGCCAGCAGCAGCAGCAACAACAACAGCAGAGCCAACAGCAGAGCCAGCAGCA  
 GCAGCCTCAGTCTTCCAGGGGACGAGATATCAGACCAGACAGGCTGTGAAAGCTGTCCAGCAGAAGGAG  
 GTCACCCAGAGCCATCCACGTCCACCATCACGCTGGTGACCAGCACACGCCGGCAGCCCTGGTCAGCA  
 GTTCGGGCTCAGCAAGCACCTGGCGTCTGCAATCAATGCCGACCTTCCATTGCCACCGCTCGGCCGA  
 CGTGGCCGAGACATTGCCAAGTACACCAGCAAAATGATGGATGCCATAAAGGGGACGATGACAGAAATC  
 TACAATGACCTCTCCAAGAACCACCTGGGAGCACAATAGCTGAGATTCGAAGGCTGAGGATTGAGATTG  
 AGAAACTGCAGTGGTGCACCAGCAGGAGCTCGCTGAGATGAAGCACAACCTGGAGTTGACCATGGCCGA  
 GATGCGGCAGAGCCTGGAACAGGAGCGGGATCGGCTCATTGCCGAGGTGAAAAGCAACTGGAGCTGGAG  
 AAGCAGCAGGCGGTGGACGAGACCAAGAAGAAGCAGTGGTGTGCCAACTGCAAGAAGGAGGCCATTTTCT  
 ACTGCTGTGGAACACCAGTACTGTGACTACCCTGTGAGCAGGCCCACTGGCCGAGCACATGAAGTC  
 CTGTACCCAGTCGGGACTGCCCTCAGCAGGAAGCAGATGCCGAGGCAAGCACAGAAACAGGAAATAAG  
 TCATCGCAGGGCAACTCCTCCAACACACAGTCAGCACCTCAGAACCAGCCAGCGCCCCAAAGAGAAAG  
 AGGCGCCAGCGGAGAAGAGCAAGGACAGTAGTAACCTGACCTGGATCTTCCGGCTCCAGAGAGACGCC  
 CTCCTCTATGCTCTTAGGCTCAATCAAAGCTCTGTTAGCAAGAGGTGTGACAAGCAGCCTGCCTATACC  
 CCAACCACTACAGACCACAGCCGACCCCAACTACCCAGCCCAGAAGTACCATTCCCGGAGCAGCAAGG  
 CAGGTTTGTGGAGCAGCAGCGAGGAGAAGCGAGGTCATCCCGCTCTGAGCACAGTGGAGGGACCAGCAC  
 GAAGAACCTCATGCCAAAGAGTCCCGGAGTCTCGGCTAGATGCCTTCTGGGAC

ACGCGTACGCGGCCGCTCGAGCAGAACTCATCTCAGAAGAGGATCTGGCAGCAATGATATCCTGGATT  
 ACAAGGATGACGACGATAAGGTTTAA

**Protein Sequence:**

>MR211857 protein sequence  
 Red=Cloning site Green=Tags(s)

MHPQSLAEEEEIKTEQEVVEGMDISTRSEKPEDPVSTTEKAPKRRFPSPHSSNGHSPQDSSTSPIK  
 KKKKPGLLNNSNKEQSELRHGPFYYMKQPLTDPVDVVPQDGRNDFYCWVCHREGQVLCCELCPRVYHAKCLR  
 LTSEPEGDWFCPECEKITVAECIETQSKAMTMLTIEQLSYLLKFAIQMKQPGTDAFQKPVPLEQHPDYA  
 EYIFHPMDLCTLEKNAKKKMYGCTEAFADAKWILHNCIIFNGGNHKLQIAKVVIKICEHEMNEIEVCP  
 ECYLAACQKRDWFCPCSNPHPLVWAKLKGFPFPAKALRDKDQVDARFFGQHDRAWVPVNNCYLMSK  
 EIPFSVKTKSIFNSAMQEMEVYVENIRKFGVFNYSPFRTPYTPNNQYQMLLDPSNPSAGTAKTDKQEK  
 VKLNFDMTASPKILLSKPLLGGAGRRISLSDMPRSPTSTNSSVHTGSDVEQDPEKKAPSSHFSASEESM  
 DFLDKSTASPASTKTGQAGSLGSPKPFSPQAPTPTMTKPKDTSTTTGSIILNLDNRSAEMDLKELSE  
 SVQQQSAPVPLISPKRQIRSRFQLNLDKTIESCQAQLGINEISEDVYTAVEHSDSEKSESSDSEYVS  
 DEEQKPKNEPEDPEDKEGSRVDKEAIAIKRKPPTNQVEVKEEAKSNSPVSEKPDPTPAKDKASPEPEKD  
 FVEKAKPSHPHTKDKLKGKDETDSPVHLGLDSDSESELVIDLGEDPSGREGRKNKDKPVSPKQDAIG  
 KPPPSSTAGNQSPPEPVLTRSATQAPAAGVTVAATTSTMSTVTVTAPATAVTGSPVKKQRPLLPKET  
 VPAVQRVVWNASKFKTSSQKWHMQIKRQQQQQQQQQQSQQQSQQQQPSSQTRYQTRQAVKAVQKQE  
 VTQSPSTSTITLVTSTQPAALVSSSGSASTLASAINADLPATASADVAADIAYKTKMMDAIAIKGTMTEI  
 YNDSLKNTTGSTIAEIRRLRIEIEKLQWLHQELAEKHNLELMAEMRQSLEQERDLIAEVKKQLELE  
 KQQAQVDETKKKQWCANCKKEAIFYCCWNTSYCDYPCQAHWPEHMKSCQTSATAPQEEADAEASTETGNK  
 SSQGNSSNTQSAPSEPASAPKEKEAPAEKSKDSSNSTLDLGSRETPSSMLLGSNQSSVSKRCDKQPAYT  
 PTTTDDHQPHNYPAPQKYHSRSSKAGLWSSSEEKRASSRSEHSGGTSTKNLMPKESRESRLDAFW

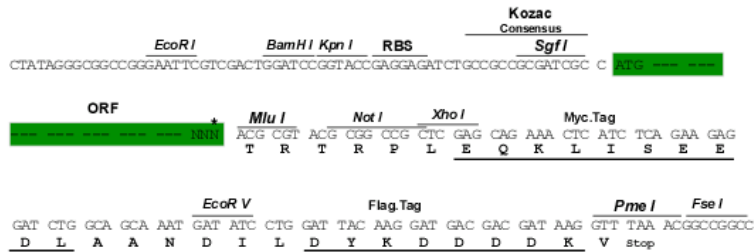
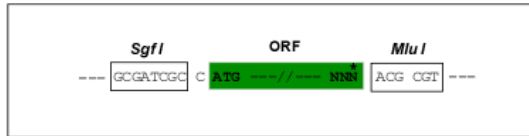
TRTRPLEQKLISEEDLAANDILDYKDDDDKV

**Restriction Sites:**

SgfI-MluI

**Cloning Scheme:**

Cloning sites used for ORF Shuttling:



\* The last codon before the Stop codon of the ORF

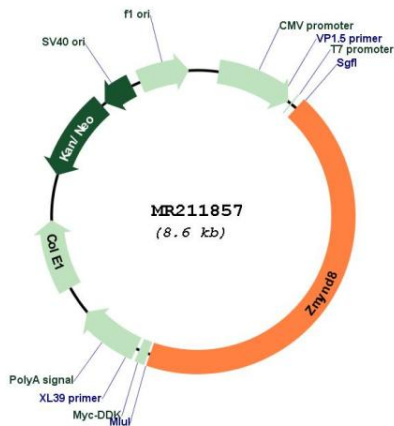
**ACCN:**

NM\_027230

**ORF Size:**

3768 bp

<b>OTI Disclaimer:</b>	The molecular sequence of this clone aligns with the gene accession number as a point of reference only. However, individual transcript sequences of the same gene can differ through naturally occurring variations (e.g. polymorphisms), each with its own valid existence. This clone is substantially in agreement with the reference, but a complete review of all prevailing variants is recommended prior to use. <a href="#">More info</a>
<b>OTI Annotation:</b>	This clone was engineered to express the complete ORF with an expression tag. Expression varies depending on the nature of the gene.
<b>Components:</b>	The ORF clone is ion-exchange column purified and shipped in a 2D barcoded Matrix tube containing 10ug of transfection-ready, dried plasmid DNA (reconstitute with 100 ul of water).
<b>Reconstitution Method:</b>	<ol style="list-style-type: none"> <li>1. Centrifuge at 5,000xg for 5min.</li> <li>2. Carefully open the tube and add 100ul of sterile water to dissolve the DNA.</li> <li>3. Close the tube and incubate for 10 minutes at room temperature.</li> <li>4. Briefly vortex the tube and then do a quick spin (less than 5000xg) to concentrate the liquid at the bottom.</li> <li>5. Store the suspended plasmid at -20°C. The DNA is stable for at least one year from date of shipping when stored at -20°C.</li> </ol>
<b>RefSeq:</b>	<a href="#">NM_027230.2</a>
<b>RefSeq Size:</b>	5423 bp
<b>RefSeq ORF:</b>	3768 bp
<b>Locus ID:</b>	228880
<b>Cytogenetics:</b>	2 H3
<b>MW:</b>	139.2 kDa

**Product images:**


Circular map for MR211857