

Product datasheet for MR211851

Tbc1d9b (NM_029745) Mouse Tagged ORF Clone

Product data:

Product Type: Expression Plasmids
Product Name: Tbc1d9b (NM_029745) Mouse Tagged ORF Clone
Tag: Myc-DDK
Symbol: Tbc1d9b
Synonyms: 2700008N14Rik; AU019384; RP23-319B15.5
Mammalian Cell Selection: Neomycin
Vector: pCMV6-Entry (PS100001)
E. coli Selection: Kanamycin (25 ug/mL)
ORF Nucleotide Sequence: >MR211851 representing NM_029745
 Red=Cloning site Blue=ORF Green=Tags(s)

TTTTGTAATACGACTCACTATAGGGCGGCCGGAATTCGTCGACTGGATCCGGTACCGAGGAGATCTGCC
 GCC**CGATCGCC**

ATGTGGCTCGGGCCGAGGAGGTGCTGGTGGCTAACGCGCTATGGGTGACGGAGCGGGCCAACCCCTTCT
 TCGTGTGTCAGCGGGCCGAGGCCACGGCAAGGGCGGAGGCCCTCACGGGTCTTCTGTGGGCACCCTGGA
 TGTGGTGTGACTCCAGCGCCGTGTGGCCCTTACCGCATCTGCACCAGACCCAGGACTCGCAGGTC
 TACTGGATAGTGGCATGTGGTTCTTCCGAAAAGAGATCACAAACTGGGAATGGCTGGAAAACAACT
 TGCTTCAGACACTGTCCATCTTCGACAACGAGGAGGACATCACTACCTTCGTCAAGGGCAAGATAACGG
 CATCATCGCAGAAGACAAGAACCTGCAGCCCCAGGGGACGAGGACCCAGGGAAATCAAGGAGGCA
 GAGCTAAAGATGCGGAAGCAGTTCGGCATGCCAGAGGGCGAGAAGCTGGTCAACTACTACTCCTGTAAC
 TCTGGAAGGGCCGCTGCCGCGCCAGGGCTGGCTCTACCTGACCGTCAACCACCTGTGCTTACTCCTT
 CCTGCTGGGGAAGGAAGTGAAGCTGGTGGTACAGTGGGTGGACGTACACGCCTGGAGAAGAATGCCACT
 TTAAGTCTCCCGAGAGCATCCGTGTGGACACACGGGACCAGGAGCTGTTTTCTCCATGTTCTAAACA
 TTGGCGAGACCTCAAGCTTATGGAGCAGCTGGCAACCTGGCCATGCGACAACCTGCTGGACAGCGAGGG
 CTTCTGGAGGACAAGGCCCTACCCAGGCTATCCGGCCACATAAGAACATCTCAGCTCTAAAGCGAGAC
 CTAGATGCCCGAGCCAAGAAATGAGTGTACAGGGCCAGTTCCGGCTACCCAAAGACGAGCGGCTGGATG
 GCCACACAGGCTGCACCCTATGGACGCCATTAACAAGCTACATATCCCGGCCAGATGTTATCTCCAA
 TAACTACATCTGCTTTGCCAGCAAGGAGGAAGATGCGTGGCCCTCATCATACCCCTGAGGGAGGTGACC
 ATTGTTGAAAAGCCGACAGCTCCAGCGTCTCCCGACCCCTCTGTCTATCAGCACCAAGAGTAAAATGA
 CCTTCTGTTTGGCAACCTGAAAGACCGTACTTCTGTTTCCAGAGGATCTGACTTCTCCAGAAAAC
 GCCGTCCAAGCAGACGGGACGAGCATTGGGGAAACAAAGGCCAGTGTTCAGACCCAGCCCCAGAGTCT
 CTCCAACTCCACAGGAGGCTTCTGAGCCACCCGCAAGCCATCTCTCCCTCAGCAGCCCTCCGAGTT
 TCAGTACCCAGGAGATTCTACTACTTCCAGGGCTGCTCAAAGTCTTCCAGAAGAACTACCCATGGA
 GGACCTTGGCGCCAAAGGGCCAAGGAGAAGATGAAGGAGGAATCCTGGAACATCCACTTCTTTGAGTAC



[View online »](#)

GGGCGTGGCATGTGCATGTACCGAACAGCCAAAACCCGGGAGCTGGTCCCTGAAAGGCATCCCTGAGAGCC
 TCCGAGGGGAGCTTTGGCTCCTCTTCTCTGGGGCCTGGAATGAGATGGTGACCCATCCCGGCTACTACGC
 TGAGCTAGTGGAGAAGTCCCTGGGGAAGTACAGCTTGGCTACCGAGGAGATAGAGCGGGACCTCCATCGC
 TCCATGCCCGAGCACCTGCTTTCCAGAATGAGCTCGGGATCGCTGCGCTCCGGCGGGTGTGACTGCCT
 ACGCCTCCGAAACCCTACTATTGGCTACTGCCAGGCAATGAACATCGTGACTTCCGTGCTCCTGCTCTA
 CGGCAGTGAGGAGGAAGCCTTCTGGTGTGGTGGCCCTGTGTGAGCGCATGCTGCCCGACTACTACAAC
 ACCAGGTAGTGGGAGCCCTCGTAGACCAGGGCATCTTTGAAGAGCTCACGAGAGATGCTCTGCCCGGC
 TCTCAGAGAAGATGCAAGAGCTGGGGGTGATCTCCAGCATCTCGCTGCTGTTTCTGACCCTCTTCT
 CAGCGTCATGCCCTTTGAGAGCGCCGTGGTCATTGTGACTGCTTCTTCTACGAGGGCATCAAGGTGATC
 CTGACAGTGGCCCTGGTGTGCTGGACGCCAACGTGGAGCAGCTGCTGGACTGCAATGACGAGGGCGAGG
 CCATGACCCTGCTGGGACAGTACCTGGACAATGTGGTCAACAAGCAGAGCATTCTCCACCTATCCACACA
 CCTCCACGCTCTGCTGACCAGTGGAGATGACCCTCCTGTGGAGGTGGACATCTTTGACCTCTGAGAGTA
 TCCTACGAGAAGTTCAGCAACCTGAGGGCTGACGACATTGAACAGATGCGGTTTAAACAGAGGCTGAAGG
 TGATCCAGTCTTGAAGACACGGCTAAGAGAAGCGTGGTCCGAGCCATACCAGGGGACATCGGCTTCTC
 CATTGAAGAGCTGGAGGATCTTTACATGGTGTAAAGCCAAGCATCTGGCAAGCCAGTACTGGGGTGGT
 AACCGCTCAGCAGCCCTCCACCGAGACCCAGCCTGCCCTACCTGGAGCAGTACCGGATCGATGCCAGCC
 AGTTTTCGGGAGCTCTTGGCCAGCCTGACGCCTTGGGCCTGTGGCTCTCACACGCCTGTGTTGGCAGGCCG
 CATGTTCCGACTCCTGGATCAAAAACAAGGACTCACTGATCAACTTCAAGGAGTTTGTGACAGGGATGAGT
 GGGATGTACCATGGAGACCTCACTGAGAAGCTCAAGGCGCTCTACAACTGCACCTGCCCCAGCTCTGA
 TCCCAGAGGAAGCCGAGTCAAGCCTGGAGGCCGCCATTACTTACAGAGGATAGCTCCTCGGAAGCACT
 GCTACAGGAGCAGCAGGAAGGAAGTGGAAATGAGGACACCCAGAAAGAAGAGAGGAGAAGGGGACCAGC
 CCTCCTGACTACCGACTACCTTGAATGTGGCTAAGGAAAAAGAGGCTCAGAAGGAAACCATTAAGG
 ACCTTCCAAGATGAACCAGGAGCAATTCATCGAGCTGTGTAACACTTTACAACATGTTTAGCGAAGA
 CCCTATGGAACAGGACTTGTATCATGCCATCGCCACTGTGGCCAGCCTTCTCCTCCGATTGGTGAGGTG
 GGAAGAAGTTTTCGGCCTGACAACCAAGAAGCCAGGGATGGTGCCACAGTGGGGATCCCAACAGTG
 CCACAGAAGAGGATGAACCACCCACACCCAACTCCATCAGGACCCAACACAGGAATGTCAGCCACCAGC
 TGCAGGGGACCGGACGGCCAAAGCCAGTGGCGACATGCATCTCGGAAAGCATTGCAGGATAGTCATGTG
 ATAGTGGAGGGAGGCAGCGGTGAGGGGACGGGCTCTCCTCCCTGCTTTTGTCTGATGATGAAACCAAAG
 ATGACATGTCCATGTCTTACTCAGTAGTCAGCACGGGCTCACTGCAGTGCAGGACCTCACGGAAGA
 CACGGTGTGGTGGGAGGAGCCTGCAGCCCCACGCCACCTCACGGGCGGGGGCACTGTGGACACA
 GACTGGTGCATTTCTTTCGAGCAGATCCTGGCCTCCATCCTAACAGAGTCTGTGCTAGTGAACCTTTTG
 AGAAGAGGGTAGACATTGGACTCAAGATCAAGGACAAAAGAAAGTAGAAAGGCAGTTTAGCACCTCCAG
 TGACCATGAGCCCCCTGGGGTCTTGGGC

ACGCGTACGCGGCCGCTCGAGCAGAACTCATCTCAGAAGAGGATCTGGCAGCAATGATATCCTGGATT
 ACAAGGATGACGACGATAAGGTTTAA

Protein Sequence: >MR211851 representing NM_029745
 Red=Cloning site Green=Tags(s)

```

MWLGPEEVLVANLWVTERANPFFVLQRRRGHGKGGGLTGLLVGTLDVVLDSSARVAPYRILHQTQDSQV
YWIVACGSSRKEITKHWLENNLLQTL SIFDNEEDITTFVKGKIHGIIAEENKNLQPQGEDDPGKFKEA
ELKMRKQFGMPEGEKLVNYYSNCFWKGVRPRQGWLYLTVNHLCFYSFLLGKEVSLVVQWVDVTRLEKNAT
LLFPESIRVDTRDQELFFSMFLNIGETFKLMQLANLAMRQLLDSEGFLEDKALPRPIRPHKNISALKRDL
LDARAKNECYRATFRLPKDERLDGHTGCTLWTFPNKLHIPPQGMFISNNYICFASKEEDACRLIIPLREVT
IVEKADSSSVLPSPLSISTKSKMTFLFANLKDRDFLVQRI SDFLQKTPSKQTGSSIGGKASVSDPAPES
LPTPQEASEPPASPSSPLSSPPSFSTQEIPTTSQGLLKVFQKNSPMEDLGAKGAKEKMKESWNIHFFEY
GRGMCMYRTAKTRELVLKGIPELREGELWLLFSGAWNEMVTHPGYYAELVEKSLGKYSLATEEIERDLHR
SMPEHPAFQNELGIAALRRVLTAAYFRNPTIGYCAQAMNIVTSVLLLYGSEEEAFWLLVALCERMLPDYYN
TRVVGALVDQGI FEELTRDVL PRLSEKMQELGVISSISLSWFLTLFLSVMPPFESAVVIVDCFFYEGIKVI
LQVALAVLDANVEQLLD CNDEGEAMTVLGRYLDNVVNKQSI SPPIPHLHALLTSGDPPVEVDIFDLLRV
SYEKFSNL RADDIEQMRFKQRLKVIQSLEDTAKRSVVR AIPGDIGFSIEELEDL YMVFKAKHLASQYWG
NRSAAVHRDPSLPYLEQYRIDASQFREL FASLTPWACGSHTPVL AGRMFRLLDQNKDSLINFKEFVTGMS
GMYHGDLTEKLKALYKHLPPALIP EEAESALEAAHYF TEDSSSEALLQEQQEGSGNEDTPERREEKGT
PPDYRHYLRMWAKEKEAQKETIKDLPKMNQEQFIELCKTL YNMFSEDPMEQDLYHAIATVASLLLRIGEV
GKKFSALTTKKPRDGAHSGDPNSATEEDEPPTPKLHQDPTQECQPPAAGDRQAKASGDMHLGKALQDSHV
IVEGGSGEGQGSPLLLSDETKDDMSMSSYSVSTGSLQCEDL TEDTVLVGGGACSPATSRAGGTVD
DWCISFEQILASILTESVLVNF FEKRVDIGLKIKDQKVERQFSTSSDHEPPGVLG
  
```

TRTRPLEQKLISEEDLAANDILDYKDDDDK

Chromatograms: https://cdn.origene.com/chromatograms/mm9096_g07.zip

Restriction Sites: SgfI-MluI

Cloning Scheme:

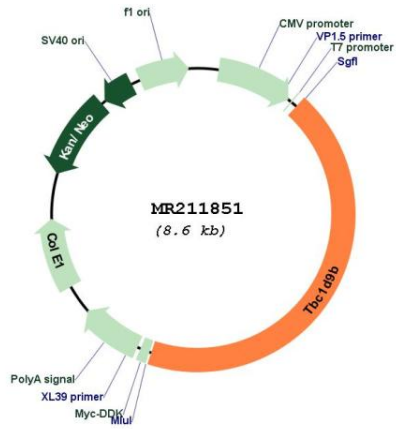


ACCN: NM_029745

ORF Size: 3738 bp

OTI Disclaimer:	The molecular sequence of this clone aligns with the gene accession number as a point of reference only. However, individual transcript sequences of the same gene can differ through naturally occurring variations (e.g. polymorphisms), each with its own valid existence. This clone is substantially in agreement with the reference, but a complete review of all prevailing variants is recommended prior to use. More info
OTI Annotation:	This clone was engineered to express the complete ORF with an expression tag. Expression varies depending on the nature of the gene.
Components:	The ORF clone is ion-exchange column purified and shipped in a 2D barcoded Matrix tube containing 10ug of transfection-ready, dried plasmid DNA (reconstitute with 100 ul of water).
Reconstitution Method:	<ol style="list-style-type: none">1. Centrifuge at 5,000xg for 5min.2. Carefully open the tube and add 100ul of sterile water to dissolve the DNA.3. Close the tube and incubate for 10 minutes at room temperature.4. Briefly vortex the tube and then do a quick spin (less than 5000xg) to concentrate the liquid at the bottom.5. Store the suspended plasmid at -20°C. The DNA is stable for at least one year from date of shipping when stored at -20°C.
RefSeq:	NM_029745.2 , NP_084021.2
RefSeq Size:	5225 bp
RefSeq ORF:	3741 bp
Locus ID:	76795
UniProt ID:	Q5SVR0
Cytogenetics:	11 B1.3
MW:	139.9 kDa
Gene Summary:	May act as a GTPase-activating protein for Rab family protein(s).[UniProtKB/Swiss-Prot Function]

Product images:



Circular map for MR211851