

Product datasheet for MR211821

Nav1 (BC059840) Mouse Tagged ORF Clone

Product data:

| | |
|---------------------------|---|
| Product Type: | Expression Plasmids |
| Product Name: | Nav1 (BC059840) Mouse Tagged ORF Clone |
| Tag: | Myc-DDK |
| Symbol: | Nav1 |
| Synonyms: | 9530089B19, POMFIL3, C230080M11Rik |
| Mammalian Cell Selection: | Neomycin |
| Vector: | pCMV6-Entry (PS100001) |
| E. coli Selection: | Kanamycin (25 ug/mL) |
| ORF Nucleotide Sequence: | >MR211821 ORF sequence Red=Cloning site Blue=ORF Green=Tags(s) |

TTTTGTAATACGACTCACTATAGGGCGGCCGGGAATTCGTCGACTGGATCCGGTACCGAGGAGATCTGCC
GCC**CGATCGCC**

ATGCTGGGCAGCAGCGTCAAGAGCGTGCAGCCGAGGTGGAGCTGAGCGGCGGCAGCGGCAGCGGGCG
ACGAGGGCGCGGACGAGTCTCGGGGAGCCAGCAGAAAGGCAGCCGCGGACGGCAGAGGCATGCTGCC
CAAGCGGCCAAGGCGGCAGGAGGCAGTGGCAGTATGGCAAGGCCAGTGCAGCGGAGCTGAAGGTCTTC
AAGTCCGGCAGCGTGGACAGTCTGTCCCCGGCGGGCTGCCTACCTCAAACCTGCGCAAACAGAAGTCGC
TCACCAACCTCTGTTTTCTCACGACTCCGAGAAAAAGCTGCAGCTGTATGAGCCTGAGTGGAGTGATGA
TATGGCCAAAGCACCCAAGGGTTTGGGCAAACTGGGGCCCAAGGGCCGAGACTCCTCTGATGTCCAAG
ACGCTGTCCAAGTCTGAGCATTCTGCTTCCAACCCAAAGGTGGCTCAACCGGCGGCGCCAAGACCCAC
TGGCTCCGCTAGCGCCAGCCTAGGCAAACCTAGCCGATTCTCGGGGACCCTATGCGGAGGTCAAGCC
TCTCAGCAAGGCGCTGAGGCAGCGGTAAAGCATGATGGCAAAATCGGATGACGAAGTCTTTCCAGCAAG
GCTAAAGCGCAAAGGGCTCAGGGACTGTGCCCTCGCAAGGGCCAGGAGGAGCGGGCCTTCTCAAGG
TGGACCCCGAGCTTGTGGTTACCGTGTGGCGACCTAGAACAGTACTTTCAGCCAGATGCTAGATCC
AGAGTCGACAGAGAAAGAGAACAGTACAGAACGTTCTGGATCTCCGACAGAACTGGAAGAAACCATGTCC
AGCCTGCGAGGCTCCCAGGTGACTCACAGCTCCCTGGAGATGCCTTGTACGACAGCGATGACGCCAAC
CCGAAGCGTGTCCAGTCTCTCAACCGCTCCTCTCCGCTCTCTTGGCGCTACGGCCAGTCTAGTCCCCG
GCTGCAGGCTGGCGACGCACCCTCTGTTGGGGGAGCTGTGTTCCGAGGGGCCACCGGCTGTTACATG
CATGGCGAGCGGGCACACTACTCCACACCATGCCGATGCGGAGCCCCAGCAAACCTCAGCCACATCTCTC
GCCTGGAGTTGGTGGAGTCCCTGGACTCTGACGAGGTGGACCTCAAATCCGGCTACATGAGTGACAGTGA
CCTCATGGCAAGACCATGACAGAAGACGATGACATCACAACGGGCTGGGATGAAAGCAGCTCCATTAGC
AGTGGGCTCAGCGATGCCTCCGACAACCTCAGCTCAGAAGAGTTCAATGCCAGCTCCTCACTCAACTCCC
TCCAACCACTCCACTGCCTCCCGCAGGAGCTCCACTATAGTGTACGCACAGACTCGGAGAAGCGCTC
CCTGGCGAGAGTGGGCTCAACTGGTTCAGTGAGTCAGAGGAGAAGACCCTAAAAAAGTGGAGTACGAC



AGTGGTAGCCTGAAGATGGAACCTGGGACTTCAAAGTGGCGGAGAGAGACCAGAGAGCTGCGATGACG
CATCCAAGGGCGGAGAACTGAAAAAGCCATCAGCCTGGGACACCCAGGGTCTTGAAAAAGGGCAAGAC
CCCTCCGGTGGCTGTACCTCTCCCATCACTCACACCGCCAGAGTGCCCTCAAAGTCGACAGGCAAACCT
GAAGGCAAAGCTACAGACAAGGGTAAACTCGCAGTGAAGAACTGGGCTACAACGCTCCTCTTCTGATG
CTGGCCGGGACCGCTGAGTGATGCTAAGAAGCCCCCTCAGGCATTGCTCGGCCCTCTACTTCAGGATC
CTTTGGTTATAAGAAGCCTCCCCCTGCTACTGGCACAGCCACTGTCATGCAGACCGGTAGCTCAGCCACC
CTCAGCAAGATCCAGAAGTCCCTCAGGGATCCCTGTGAAGCCAGTAAACGGGCGCAAGACGAGTTTAGCG
TGTCCAACAGTGTAGAGCCGGATTTCTCGCCCCCTGGAGCACGGTCCAACATCCAGTATCGCAGCCTACC
CAGGCCAGCCAAGTCCAGTTCTATGAGTGTGACTGGGCGTGGTGGACCTCGGCCTGTTAGCAGCAGCATT
GACCCAGCCTCCTCAGACCAAGCAGGGTGGCCTTACACCTCCAGACTGAAGGAACCTTCCAAGGTGCG
CCAGTGGTCGGAGCACTCCAGCCCTGTCAATCAGACAGATCGGAAAAGGAGAAGGCCAAAGCCAAAGGC
TGTGGCCCTGGACTCAGACAACATCTCCTTGAAGAGCATAGGCTCCCCAGAAAGCACTCCCAAGAACCAA
GCAAGCCACCCTCCAGCCACCAAGTTAGCAGAGCTGCCACCAACCCCTCTCAGGGCCACAGCTAAAAGCT
TTGTCAAGCCACCCTCGTAGCCAATCTAGACAAAGTCAACTCCAACAGTTTGGATCTACCATCTCCAG
CGACCCCATGCTTCCAAGGTCCAGATCTGCATGCTCCGAGCTCATCAACTGGGGGCCCTCCTCCTTCT
TGCTTCACTCCCAGCCCAGCACCCATCCTCAATTAACCTCAGCCAGCTTCTCCCAGGGCCTGGAGCTAA
TGAGTGGTTTTAGTGTCCAAAGGAGACCCGCATGTACCCAAACTCTCAGGCCTGCACAGGAGCATGGA
GTCCCTCCAGATGCCAATGAGCCTGCCAGTGCCTTCCCAGCAGCGCCCCATCCCTACCCACCTACT
GCCCCATCAGAGGAAGACACAGAAGAGCTGCCCTGGAGTGAAGCCCCAGGGCTGGACAATTGGACAGTC
AGCGAGATCGGAATACCCTCCCCAAGAAAGGGCTCAGGTACCAGCTTCACTCCAGGATGAGACCAAGGA
GAGGGCGCACTCCCACTGCCGGTGGGCTTCCAGAATCCGACGACCAGGCAGAGCTGCCATCCCCCCT
GCTCTCCTCATGTCCTTGAAGTGAAGGGCCAGCTTACCAACATAGTGAAGTCCACTGCGGCCACCACGC
CAAGAATCACCCGATCCAACAGCATCCCCACCCAGGCGGCCCTTCGAGCTGTACAGCGGCTCCCAAAT
GGGGAGCACCCCTGCTCCCTGGCCGAGAGACCCAAGGGAATGATTCCGGTCAAGATCCTTCCGAGACCCACG
GATGATGTTTATGGCTCGGTGCTGTCTTGGCCTCCAGTCTTCTTACTACTCCTCAGCTGAGGAGA
GGATGCAATCTGAGCAAATTCGGAAGCTTCGTAGGGAGCTGGAGTCGTCAGGAAAAGGTGGCCACCCT
GACATCTCAGCTGTCTGCCAACGCTAACCTAGTGGCCGCTTTCGAGCAGAGCCTGGTGAATATGACATCC
CGCCTGCGACACCTGGCAGAGACGGCCGAGGAGAAGGACACCGAGCTGTTGGATTTGCGAGAACTATAG
ACTTCTGAAGAAAAGAATTCCGAGGCCAGGCAGTCATCCAGGGAGCGTTAAATGCCTCAGAAGCCAC
GCCAAAAGAACTCCGGATCAAGAGGCAGAATTCCTCAGATAGCATCTCCAGCCTCAACAGCATCACCAGC
CATTCCAGCATCGGCAGCAGCAAAGATGCTGATGCCAAGAAGAAAAGAAGAAGATTGGCTTCGGAGTT
CCTTCAACAAAGCCTTCAGTTTG

ACGCGTACGCGGCGGCTCGAGCAGAACTCATCTCAGAAGAGGATCTGGCAGCAAATGATATCCTGGATT
ACAAGGATGACGACGATAAGGTTTAA

Protein Sequence:

>MR211821 protein sequence
Red=Cloning site Green=Tags(s)

```

MLGSSVKSQPEVELSGGSGSGGDEGADESARGASRKAADGRGMLPKRAKAAGGSGSMASAAELKVF
KSGSVDSRVPGLPTSNLRKQKSLTNLSFLT DSEKQLQYEPWSDMAKAPKGLGKLGPKGRETPLMSK
TL SKSEHS LFQPKGGSTGAKT PLAPLAPSLGKPSRIPRGPYAEVKPLSKAPEAAVSDDGKSDDELLSSK
AKAQKSGSTVPSAKGQEERAF LKVDP ELVVTVLGDLEQLLF SQMLDPESQRKRTVQNVLDLRQNLEETMS
SLRGSQVTHSSLEMPCYDSDANPRSVSSLSNRSSPLSWRYGQSSPRLQAGDAPSVGGSCRSEPPAWYM
HGERAHYSHTMPMRSPSKLSHISRLELVE LSDSDEVDLKSGYMSDSL MGKTMTEDDDDITTGWDESSIS
SGLSDASDNL SSEEFNASSLSNLPTTPTASRRSSTIVLR TDSEKRSLAESGLNWFSESEEKTPKKLEYD
SGSLKMEPGTSKWRREPERESCDDASKGELK KPI SLGHPGSLKKGKTPPVAVTSPITHTAQSALKVAGKP
EGKATDKGKLVAKNTGLQRSSSDAGRDLSDAKKPPSGIARPSTSGSFGYKPPPATGTATVMQTGSSAT
LSKI QKSSGIPVKPVNGRKTSLDVSNSVEPGFLAPGARSNIQYRSLPRPAKSSMSVTGRGGPRPVSSSI
DPSLLSTKQGG LTPSRLKEPSKVASGRSTPAPVNQTDREKEKAKAKAVALSDNLSLKSIGSPESTPKNQ
ASHPPATKLAELPPTPLRATAKSFVKPPSLANLDKVNNSLDLPSSSDTHASKVPDLHAPSSSTGGPLPS
CFTPSPAPILNINSASF SQGLELMSGFSVPKETRMYPKLSGLHRSMESLQMPMSLPSAFPSSAPIPTPPT
APSEEDTEELPWGSPRAGQLDSQRDRNTLPKKGLRYQLQSQDETERRHSHTAGGLPESDDQALPSP
ALSMSLSAKGQLTNI VSP TAATTPRITRNSIP THEAAFELYSGSQMGSTLSLAERP KGMIRSGSFRDPT
DDVHGSVLSLASSASSTYSSAEERMQSEIQIRKL RRELESSQEKVATLTSQLSANANLVAAFEQSLVNMTS
RLRHLAETAEEKDTELLDLRETIDFLKKKNSEAQAVIQGALNASEATPKELRIKRNSSDSISLNSITS
HSSIGSSKDADAKKKKKKSWLRSSFNKAFL
    
```

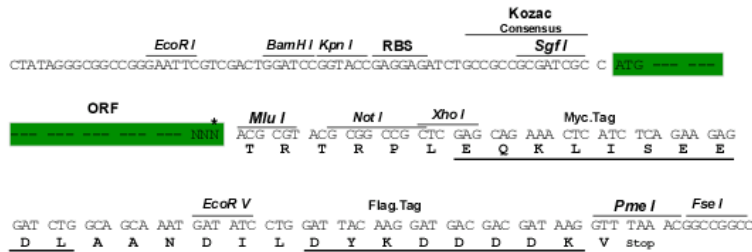
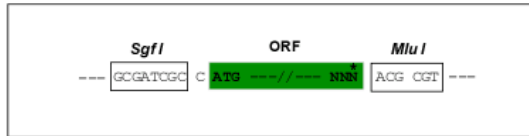
TRTRPLEQKLISEEDLAANDILDYKDDDDKV

Restriction Sites:

Sgfl-MluI

Cloning Scheme:

Cloning sites used for ORF Shuttling:



* The last codon before the Stop codon of the ORF

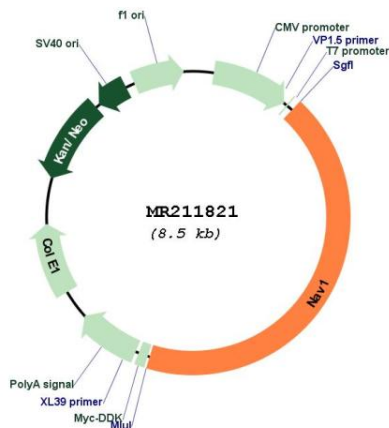
ACCN:

BC059840

ORF Size:

3663 bp

| | |
|-------------------------------|---|
| OTI Disclaimer: | The molecular sequence of this clone aligns with the gene accession number as a point of reference only. However, individual transcript sequences of the same gene can differ through naturally occurring variations (e.g. polymorphisms), each with its own valid existence. This clone is substantially in agreement with the reference, but a complete review of all prevailing variants is recommended prior to use. More info |
| OTI Annotation: | This clone was engineered to express the complete ORF with an expression tag. Expression varies depending on the nature of the gene. |
| Components: | The ORF clone is ion-exchange column purified and shipped in a 2D barcoded Matrix tube containing 10ug of transfection-ready, dried plasmid DNA (reconstitute with 100 ul of water). |
| Reconstitution Method: | <ol style="list-style-type: none"> 1. Centrifuge at 5,000xg for 5min. 2. Carefully open the tube and add 100ul of sterile water to dissolve the DNA. 3. Close the tube and incubate for 10 minutes at room temperature. 4. Briefly vortex the tube and then do a quick spin (less than 5000xg) to concentrate the liquid at the bottom. 5. Store the suspended plasmid at -20°C. The DNA is stable for at least one year from date of shipping when stored at -20°C. |
| RefSeq: | <u>BC059840</u> , <u>AAH59840</u> |
| RefSeq Size: | 3938 bp |
| RefSeq ORF: | 3665 bp |
| Locus ID: | 215690 |
| Cytogenetics: | 1 E4 |
| MW: | 129.6 kDa |
| Gene Summary: | May be involved in neuronal migration.[UniProtKB/Swiss-Prot Function] |

Product images:


Circular map for MR211821