

## Product datasheet for MR211777

### Itga11 (NM\_176922) Mouse Tagged ORF Clone

#### Product data:

Product Type: Expression Plasmids  
 Product Name: Itga11 (NM\_176922) Mouse Tagged ORF Clone  
 Tag: Myc-DDK  
 Symbol: Itga11  
 Synonyms: 4732459H24Rik  
 Mammalian Cell Selection: Neomycin  
 Vector: pCMV6-Entry (PS100001)  
 E. coli Selection: Kanamycin (25 ug/mL)  
 ORF Nucleotide Sequence: >MR211777 ORF sequence  
 Red=Cloning site Blue=ORF Green=Tags(s)

TTTTGTAATACGACTCACTATAGGGCGGCCGGAATTCGTCGACTGGATCCGGTACCGAGGAGATCTGCC  
 GCC**CGATCGCC**

ATGGACTTCCAGGGGCTCCTGGTGGCTGGACCTCAGCCTTTGGCCAGGATTCACGGACACCTTCA  
 ATATGGATACCAGAAATCCCGGGTCATTGCTGGTCCCAGTGCTGCCTTCTTTGGCTACACAGTACAGCA  
 GCATGATATCAGTGGCAAGAAGTGGTTGGTTGTGGGTGCCCAATGAAACCAATGGCCATCAGAAGACA  
 GGAGACGTATACAAATGTCGGTAACCCAGGGCAACTGCACCAAGCTCAACCTGGCAGGGTCACCTGT  
 CCAATGTGTCTGAGAGGAAGGACAACATGCGCCTCGGCCTGAGCCTTGCCACCAACCCCAAGGACAACAG  
 CTTCCTGGCCTGCAGCCCTCTCTGGTCGCACGAGTGTGGAAGCTCCTACTACCCACTGGCATGTGCTCA  
 CGGGCCAACCTCCAACCTCAGATTCTTAAGACGGTAGCTCCGGCACTTCAGAGGTGCCAGACTTACATGG  
 ACATCGTCATTGTCTTAGATGGCTCCAACAGCATCTACCCCTGGGTGGAGGTCCAACACTTCCTCATCAA  
 TATCCTCAAAAAGTTCTACATTGGCCCCGGCCAGATCCAGGTCCGGAATAGTCCAGTATGGAGAAGATGCC  
 GTCCATGAGTCCACCTTAATGACTACAGGTCTGTAAAAGATGTGGTGGAAAGCCGCCAGCCACATTGAGC  
 AGAGAGGAGGGACAGAGACCCGCACGGCATTGGCATTGAATTTGCACGCTCGGAGGCTTTCCAGAAGGG  
 TGAAGAAAAGGGGCAAGAAAGTATGATTGTATCACGGACGGGAATCCCACGACAGCCAGACCTG  
 GAGAAGGTGATCCGGCAGAGCGAGAAGGACAACGTGACCAGATACGCTGTGGCCGTTTTGGGCTACTACA  
 ACCGCAGGGGATCAATCCAGAGACTTTTCTAAATGAAATCAAATACATCGCCAGCGACCCTGACGACAA  
 GCACTTCTTCAACGTACAGATGAGGCGGCCCTGAAGGACATTGTTGATGCCCTTGGGGACAGGATCTTC  
 AGCTTGAAGGCACCAACAAGAATGAGACCTCTTTGGGCTGGAGATGTCGCAGACTGGCTTTTCTTCCAC  
 ATGTGGTAGAGGATGGGATCCTGCTGGGAGCTGTGGGAGCCTATGACTGGAACGGGGCGGTGCTGAAGGA  
 GACAAGTGTGGCAAGGTGATTCTCACCGAGAGTCTACCTTAAGGAGTTTCCAGAGGAGCTGAAGAAC  
 CATGCAGCATACCTAGGGTACACGGTGACCTCGGTTGTCTCCAGGCAGGGGCGGGTGTATGTGGCTG  
 GAGCCCCAGATTCAACCATACTGGCAAGGTATTCTATTAGCATGCACAACAACCGGAGCCTCACCAT  
 CCACCAGGCTCTTCGGGGCGAGCAGATAGGCTCCTACTTTGGGAGTGAGATTACCTCAGTGGACGTCAT



[View online »](#)

GATGACAGAGTGACAGATGTGCTGCTGGTGGGTGCACCCATGTACTTCAGCGAGGGCCGAGAGCGAGGCA  
 AGGTGTATGTCTACAACCTGAGACAGAACCGGTTTGTATAATGGCACTCTGAAGGATCCCACAGCTA  
 CCAGAACGCCCGTTTCGGGTCCTGCATCGCCTCTGTTCAAGACCTCAACCAAGATTCTACAATGATGTG  
 GTGGTGGGGGCCCTCTGGAGGACAGCCACAGAGGGGCCATCTACATCTTCCATGGCTTCCAACCAATA  
 TCCTGAAGAAGCCATGCAGAGAATAACAGCCTCGGAGCTGGCTCCTGGCCTGCAGCATTTTGGCTGCAG  
 CATCCACGGACAACCTGGACCTCAATGAGGATGGCTTGTGGACCTAGCAGTGGCGCCCTGGGCAACGCT  
 GTGGTTTTGTGGGCCCGCCCTGTAGTTCAAATCAACGCCAGCCTCCACTTTGAGCCTTCCAAGTCAACA  
 TCTTCCACAAGGACTGCAAGCGCAATGGCAGGGATGCCACCTGCCTGGCGCCTTCTCTGCTTCATACC  
 CATCTTCTGGCACCCCACTTCCAACAGCAACCGTCGGCATCAGGTACAATGCAACCATGGATGAGAGG  
 CGGTATATGCCGCGGGCACATCTGGACGAGGGCGGAGACCAGTTCACCAACAGAGCCGCTCCTGCTCCT  
 CTGGCCAGGAACACTGTCAAAGGATCAACTTCCATGTCTGGACACTGCAGACTACGTGAAGCCAGTGGC  
 CTTCTCCGTGGAGTACTCCCTAGAGGACCCTGACAACGGCCCATGTGGACAACGGCTGGCCCACTACG  
 CTCAGAGTGTCCGTGCCCTTCTGGAATGGCTGTAATGAGGATGAACACTGTGTCCCTGACCTTGTACTGG  
 ATGCTCGGAGTGACCTGCCACTGCCATGGAGTACTGCCAGCGGGTGTGGGAGGCCGGCGCAGGACTG  
 CTCAGACTACACCCTGTCTTTCGACACCCTGTCTTTCATCATAGAGAGCACGCGCCGGGTGGCAGTG  
 GAGGCCACGCTGGAGAACAGAGGAGAGAATGCTTACAGCGCCGTCTCAACATCTCCAGTCAGAGAACC  
 TTCAGTTTGCAGCCTGATCCAGAAGGATGACTCAGACAACAGCATCGAGTGTGTGAACGAGGAGAGGGC  
 GCTTACACAAGAAAGTCTGCAACGTGACTACCCCTTCTTTCAGAGCCAAGGCCAAGGTGGCTTCCGTCTG  
 GATTTTCGAGTTCAGCAAGTCTGTGTTTCTGCACCATCTTCAGATCCATCTGGGTGCCGCGCAGTGACAGTC  
 ACGAGCAAGACAGCACCCGAGACGATAACACGGCCCTCTGCGCTTCCACCTCAAATATGAAGCAGACGT  
 CCTCTTACCAGAAGCAGCAGCCTGAGCCACTTCGAGGTCAAGGCAAACAGCTCACTTGAGAGCTATGAT  
 GGCATCGGACCTCCGTTCAACTGTGTTTTCAAGGTGCAGAACCTGGGCTTTTTCCCATCCACGGGGTGA  
 TGATGAAGATCACTGTGCCCATCGCCACCAGGGTGGCAACCGCCTGCTGATGTTGAGGGACTTCTTCCAC  
 CGACCAGGGCAACACATCCTGTAACATCTGGGGAAACAGCACAGAGTACAGGAGTACCCCAACTGAGGAA  
 GATCTGAGCCATGCCCCACAGAGGAATCACAGCAACTCCGACGTGGTCTCCATCATCTGCAACCTGAGGC  
 TGGCCCCAGCCAGGAGACCAGTTCTACTGTTGGGAAACCTGTGGTGCATCTCTGAAAGCACTCAA  
 GTACAGGTCTCTGAAGATCACAGTCAACGCCGCTTGCAGAGGCAGTTCACAGCCCTTCTCTCCGA  
 GAGGAAGACCCTAGCCGCCAGGTCACATTTGAGATCTCCAAGCAAGAAGACTGGCAGGTCCCATCTGGA  
 TCATCGTGGGCAGCACTCTGGGGGCTCTTGTGCTGCTGGCCCTGCTGGTCTGGCACTGTGGAAGCTCGG  
 TTTTTTAAAAGTGCCAAGCGCAAGAGGGAACCTGGCCTAGGCCCATCCCCAAAGAGCTCAAG

ACGCGTACGCGGCCGCTCGAGCAGAACTCATCTCAGAAGAGGATCTGGCAGCAAATGATATCCTGGATT  
 ACAAGGATGACGACGATAAGGTTTAA

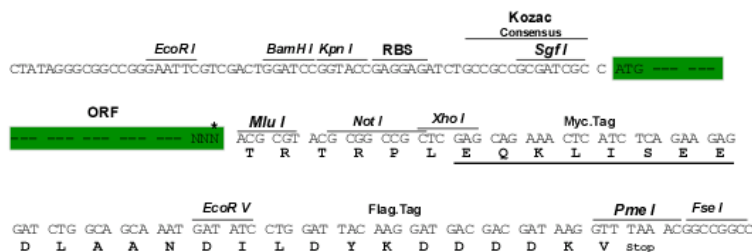
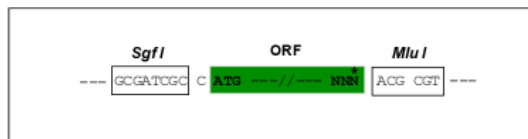
**Protein Sequence:** >MR211777 protein sequence  
 Red=Cloning site Green=Tags(s)

MDFPRGLLVAVTSLWPGFTDTFNMDTRNPRVIAGPSAAFFGYTVQQHDISGKKWLVVWAPMETNGHQKT  
 GDVYKCPVTQGNCTKLNLRVTL SNVSRKDNMRLGLSLATNPKDNSFLACSPLWSHECGSSYYTTGMCS  
 RANSNFRFSKTVAPALQRCQTYMDIVIVLDGSNSIYPWVEVQHFLINILKKFYIGPGQIQVIGVQYGEDA  
 VHEFHLNDYRSVKDVVEAASHIEQRGGTETRTAFGIEFARSEAFQKGGRRKGAKKVMIVITDGESHSDPDL  
 EKVIRQSEKDNVTRYAVAVLGYNNRRGINPETFLNEIKYIASDPDDKHFNVNDEAALKDIVDALGDRIF  
 SLEGTNKNETSFGLEMSQTGFSSHVEDGILLGAVGAYDWNQAVLKETSAGKVIHPHRESYLKEFPEELKN  
 HAAYLGYVTVSVSSRQGRVYVAGAPRFNHTGKVIILFSMHNNRSLTIHQALRGEQIGSYFGSEITSVDVN  
 DDRVTDVLLVGAPMYFSEGREGRKVVVYNLRQNRVYNGTLKDSHSYQNAFNGSCIASVDLNDQDSYNDV  
 VVGAPLEDHRGAIYIFHGFQTNILKKPMQRITASELAPGLQHFGCSIHGQLDLNEDGLVDLAVGALGNA  
 VVLWARPVVQINASLHFEPKINIFHKDKCRNGRDATCLAFLCFIPIFLAPHFQTATVGI RYNATMDER  
 RYMPRAHLDDEGGDQFTNRAVLLSSGQEHCRINFHVLDTADYVKPVAFSVEYSLEDPDNGPMLDNGWPTT  
 LRVSVPFWNGCNEDEHCVPLVLDARSDLPTAMEYCVQVLRPAQDCSSYTL SFDTTVFIIESTRRRVAV  
 EATLENRGENAYSAVLNISQSENLFASLIQKDDSDNSIECVNEERRLHKKVCNVSYPFFRAKAKVAFRL  
 DFEFSKSVFLHHLQIHLGAGSDSHEQDSTADDNTALLRFHLKYEADVLFTRSSSLSHFEVKANSLSLEYD  
 GIGPPFNCFVKVQNLGFFPIHGVMKIVPIATRGGNRLMLRDFFTDQGNTSCNIWGNSTEYRSTPTEE  
 DLSHAPQRNHSNSDVVSIICNLRAPSQETSFYLVGNLWLTSLKALKYRSLKIVNAALQRQFHSPFIFR  
 EEDPSRQVTFEISKQEDWQVPIWIIIVGSTLGGLLLLALLVLALWKLGFFKSARKKREPGLGPIPKELK

TRTRPLEQKLISEEDLAANDILDYKDDDDKV

**Restriction Sites:** SgfI-MluI  
**Cloning Scheme:**

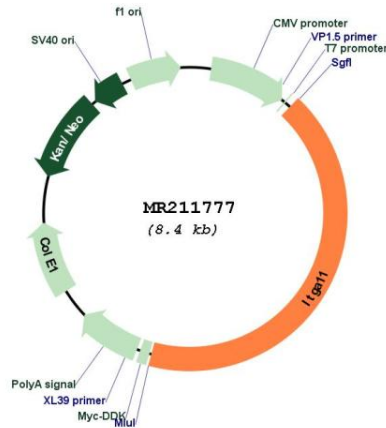
Cloning sites used for ORF Shuttling:



\* The last codon before the Stop codon of the ORF

**ACCN:** NM\_176922  
**ORF Size:** 3567 bp

<b>OTI Disclaimer:</b>	The molecular sequence of this clone aligns with the gene accession number as a point of reference only. However, individual transcript sequences of the same gene can differ through naturally occurring variations (e.g. polymorphisms), each with its own valid existence. This clone is substantially in agreement with the reference, but a complete review of all prevailing variants is recommended prior to use. <a href="#">More info</a>
<b>OTI Annotation:</b>	This clone was engineered to express the complete ORF with an expression tag. Expression varies depending on the nature of the gene.
<b>Components:</b>	The ORF clone is ion-exchange column purified and shipped in a 2D barcoded Matrix tube containing 10ug of transfection-ready, dried plasmid DNA (reconstitute with 100 ul of water).
<b>Reconstitution Method:</b>	<ol style="list-style-type: none"> <li>1. Centrifuge at 5,000xg for 5min.</li> <li>2. Carefully open the tube and add 100ul of sterile water to dissolve the DNA.</li> <li>3. Close the tube and incubate for 10 minutes at room temperature.</li> <li>4. Briefly vortex the tube and then do a quick spin (less than 5000xg) to concentrate the liquid at the bottom.</li> <li>5. Store the suspended plasmid at -20°C. The DNA is stable for at least one year from date of shipping when stored at -20°C.</li> </ol>
<b>RefSeq:</b>	<u>NM_176922.4, NP_795896.3</u>
<b>RefSeq Size:</b>	4937 bp
<b>RefSeq ORF:</b>	3567 bp
<b>Locus ID:</b>	319480
<b>Cytogenetics:</b>	9 B
<b>MW:</b>	133 kDa

**Product images:**


Circular map for MR211777