

Product datasheet for MR211773

Per1 (BC091645) Mouse Tagged ORF Clone

Product data:

Product Type:	Expression Plasmids
Product Name:	Per1 (BC091645) Mouse Tagged ORF Clone
Tag:	Myc-DDK
Symbol:	Per1
Synonyms:	Per, mPer1, m-rigui
Mammalian Cell Selection:	Neomycin
Vector:	pCMV6-Entry (PS100001)
E. coli Selection:	Kanamycin (25 ug/mL)
ORF Nucleotide Sequence:	>MR211773 ORF sequence Red=Cloning site Blue=ORF Green=Tags(s)

TTTTGTAATACGACTCACTATAGGGCGGCCGGAATTCGTCGACTGGATCCGGTACCGAGGAGATCTGCC
GCC**CGATCGCC**

ATGAGTGGTCCCCTAGAAGGGGCCGATGGGGGAGGAGACCCAGGCCCGGAGAACCTTTTTGTCCTGGAG
GAGTCCCATCCCCTGGGGCCCCGAGCACCAGCCCTTGTCCAGGCCCCAGCCTGGCTGATGACACTGATGC
AAACAGCAATGGCTCAAGTGGCAATGAGTCCAACGACCCGAGTCCAGGGGCGCATCTCAGCGGAGTTCT
CATAGTTCCTCTTCTGGCAATGGCAAGGACTCAGCTCTGCTGGAGACCACTGAGAGCAGCAAGAGTACAA
ACTCACAGAGCCCATCCCACCCAGCAGCTCCATTGCCTACAGCCTCCTGAGTGGAGCTCAGAGCAGGA
CAACCCATCTACCAAGTGGCTGCAGCAGTGAACAGTCCAGCTCGAGCCAGGACCCAGAAAGAACTCATGACT
GCACTTCGGGAGCTCAAACCTTCGACTGCCACCAGAGCGTCGGGGCAAGGGCCGCTCTGGGACCTTGCCCA
CACTGCAGTACGCTCTGGCCTGTGTCAAGCAGGTTCAAGGTAACCCAGGAATATTACCAGCAGTGGAGTCT
GGAGGAGGGTGAGCCTTGTGCCATGGACATGTCTACTTACACCCTGGAGGAATTGGAGCATATCACATCC
GAATACACACTTCGAAACCAGGACACCTTCTCTGTGGCTGTGTCTTCTGACAGGCCGGATTGTCTATA
TTTCGGAGCAGGCAGGTGCTGCTGCGTTGCAACCGGATGTGTTTCGGGGTGCCCGCTTCTCAGAGCT
CCTGGCTCCCCAGGATGTGGGTGCTTCTATGGCTCTACTACACCATCTCGACTGCCACCTGGGGCACT
GGCACCCTGCAGTTCAGGTCTCAAGGACTTCAACCAGGAAAAGTCTGTCTTCTGCCGAATCAGAGGAG
GTCCTGACCGGGATCCAGGGCCTCGGTACCAGCCATTCCGCTAACCCTATATGTGACCAAGATTGGGT
CTCAGATGGAGCCCTGCACAGCCGTGCTGCTACTCATTGCCGAGCGCATCCACTCTGGTTATGAAGCT
CCCCGGATCCCTCCTGACAAGAGGATCTTACCACCCGACACACCAAGCTGCCTCTTCCAGGATGTAG
ATGAAAGGGTGCCCCACTGCTGGGTTACCTTCCCAGGATCTCCTGGGGCTCCAGTACTTCTCTTTCT
ACATCCTGAGGACCGACCCCTCATGCTGGCCATTATAAGAAGATACTGCAGCTGGCAGGCCAGCCCTTT
GACCATCCCCTATTGCTTCTGTGCTCGGAACGGGGAATATGTCACCATGGACACCAGCTGGGCCGGTT
TTGTGACCCCTGGAGCCGCAAGGTGGCTTTCGTGTTGGGTCGCCATAAAGTGCACAGGCCACCCCTGAA
TGAGGACGCTTCACTCCCCAGCCCCAGCCAGCTCCGTCCTGGACTCTGATATCCAGGAGCTCTCA



[View online »](#)

GAGCAGATCCATCGATTGCTGCTGCAGCCTGTGCACAGCTCCAGCCCCACGGGGCTCTGTGGAGTTGGCC
CTCTGATGTCCCCTGGTCTCTACACAGCCCTGGCTCCTCCAGTGATAGCAATGGGGGGACGCTGAGGG
GCCTGGGCCTCTGCTCCAGTGACTTCCAGCAGATCTGTAAGGATGTGCATCTGGTAAAGCACCAGGGA
CAACAGCTCTTCAATTGAATCTCGGGCAAGCCCCACCCCGGCCCTCTTGTACAGGTACATTCA
AAGCCAAAGTCTTCCCTGCCAGTCCCCAAACCCGAACCTGGAGGTGGCCCCAGTTCTGACCAAGCCTC
GTTAGCCTTGGCCCTGAGGAGCCAGAGAGGAAAGAAACCTCTGGCTGTTCTACCAGCAGATCAACTGC
CTGGACAGCATCCTCAGGTATTTGGAGAGCTGCAACATTCCAGTACAACCAAGCGTAAATGTGCCTCCT
CCTCCTCTACACTGCCTCTTCAGCCTCTGATGATGACAAGCAGAGGGCAGGTCCAGTTCCTGTGGGGC
CAAGAAAGATCCGTCTGTCAGCAATGCTGTCTGGGGAGGGGGCAACTCCTCGGAAGGAGCCAGTGGTGGGA
GGCACCCTGAGCCGCTCGCCCTGGCCAATAAGGCAGAGAGCGTGGTGTCCGTCACCAGTCAGTGTAGCT
TCAGCTCCACCATCGTCCATGTGGGAGACAAGAAGCCCCGGAGTCGGACATCATCATGATGGAAGACCT
GCCTGGCTGGCCCTGGCCAGCCCCAGTCCGGCCCCAGCCCCACAGTAGCCCTGACCAACCCCA
GATGCTTATCGCCAGTGGGTCTGACCAAGCCGTGCTGTCCCTGCACACAGAAGGAAGAGCAAGCCT
TCCTCAACCGCTTCAGAGATCTTGGCAGGCTTCGTGGACTTGACACCTCTTCTGTGGCCTTGGTGTCCC
TAACTATCTATTCCCTACCCACCTAGTTATCCATATGGGGTGTCCAGGCCCTGTTGAGGGGCCACCC
ACGCCTGCTTCCACTCGCCCTCCTCATCCCTGCCCCACCACCTCTCAGCCCCCCCACCGCCAGACT
CCCCACTGTTCAACTCGAGATGCAGTCCCCACTCCAGCTCAATCTGCTGCAGCTTGAGGAGTCCCCCG
CACGGAGGGGGCGCTGCTGCAGGAGGCCAGGAAGCAGTGTGGGCCCTGCCTCCCAGTGAAGGAGT
GCTGAGCCAGAGGCCAGATTGGTGGAGTTACTGAGTCGTCCAATCAGGATGCACCTTTCAGGCTCCAGCG
ACCTGTGGAGCTACTGCTCCAAGAAGACTCTCGCTCGGGCACAGGCTCCGCAGCCTCAGGCTCCCTGGG
CTCTGGCCTGGGCTCTGGGTCTGGTTTCCAGGATCCCACGAAGGGGAAGCACCTCAGCCAGCATCACCCGC
AGCAGTCAGAGCAGCCATAACAAGCAAGTACTTTGGCAGCATCGACTCTTCCGAGGCTGAAGCTGGGGCTG
CTCGGGCCAGGACTGAGCCTGGGACCAGGTCATTAAGTGTGTGCTCCAGGACCCCATCTGGCTGCTCAT
GGCCAATGCCGACCAGCGTGTGATGATGACATACCAGGTGCCGTCCAGGGATGCAGCCTCTGTGCTGAAG
CAAGACCGGGAGAGGCTCCGGGCCATGCAGAAACAGCAGCCACGTTCTCAGAGGACCAGAGGCGGGAAC
TGGGTGCTGTGCACTCCTGGGTCCGGAAGGGCCAGCTGCCTCGGGCCCTTGTGACGCGGTGTGTGGA
CTGTGGCAGCAGCGTTCAAGATCCTGGCCACTCTGATGACCCCTCTTCTCAGAAGTGGATGGATTGGGG
CTGGAGCCCATGGAAGAGGGTGGAGGCGAGGGTGGTGGTGTGGTGTGGCGGTGGTGGGGTGTGGT
GTGAGGAGGCCAGACCCAAATTGGGGTAAGGGTTCAAGCTCTCAGGACTCTGCCATGGAGGAAGAAGA
GCAAGGTGGGGCTCATCCAGCCAGCTTACCTGCAGAAGAAAACAGCACCAGC

ACGCGTACGCGGCGCTCGAGCAGAACTCATCTCAGAAGAGGATCTGGCAGCAAATGATATCCTGGATT
ACAAGGATGACGACGATAAGGTTTAA

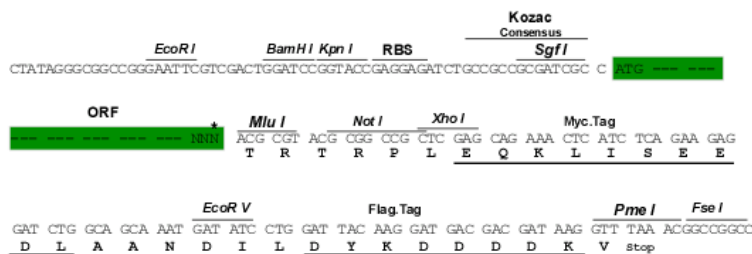
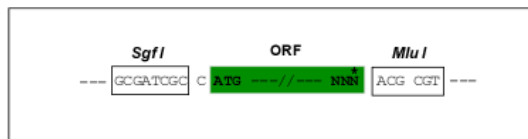
Protein Sequence: >MR211773 protein sequence
 Red=Cloning site Green=Tags(s)

MSGPLEGADGGGDP RPGE PFC PGGV P SPGAP QHRPC PGP SLADDTDANSNGSSGNE SNGPESRGASQRSS
 HSSSSGNGKDSALLETTESKSTNSQSPSPSSSIAYSLLSASSEQDNPSTSGCSSEQSARARTQKELMT
 ALRELKLR LPPERRGKGRSGTLATLQYALACVKQVQANQEYYQQWSLEEGEPCAMD MSTYLEEHITS
 EYTLRNQDTFSVAVSFLTGRIVYISEQAGVLLRCKRDVFRGARFSELLAPQDVGVFYGSTTPSRLPTWGT
 GTSAGSGLKDFTEKSVFCRIRGGPDRDPGPRYQPFRLTPYVTKIRVSDGAPAQPCELLIAERIHSGYEA
 PRIPDPKRIFTRHTPSCLFQDVEDERAAPLLGYLPQDLLGAPVLLFLHPEDRPLMLAIHKKILQLAGQPF
 DHSPIRF CARNGEYV TMDT SWAGFVHPWSRKVAFVLGRHKVRTAPLNEDVF TPPAPSPAPSLDSDIQELS
 EQIHRLLLPVHSSSPTGLCGVGPLMSPGPLHSPGSSSDSNGGDAEGPGPPAPVTFQ QICKDVHLVKHQG
 QQLFIESRAKPPPRLLATGTFKAKVLPQSPNPELEVAPVPDQASLALAPEEPERKETSGCSYQQINC
 LDSILRYLESCNIPSTTKRKCASSSYTASSASDDDKQRAGVPVVGAKKDPSSAML SGEGATPRKEPVVG
 GTLSPLALANKAESVSVTSQCSFSSTIVHVGDKKPPESDIIMMEDLPGLAPGPAPSPAPSP TVAPDPTP
 DAYRVPGLTKAVLSLHTQKEEQAF LNFRDLGRLRGLDTSSVALVLPNYLFPTPPSYPYGVSQAPVEGPP
 TPASHSPSPSLPPP LSPPHRPSPLFNSRCSSPLQLNLLQLEESPRTEGAAAGGPGSSAGLPPESET
 AEPEARLVEVTESSNQDALSGSSDLELLQLQEDSRSGTGSAA SGLGSLGSGSGSGSHEGGSTSASITR
 SSQSSHTSKYFGSIDSSEAEAGAARARTEPGDQVIKCVLQDPIWLLMANADQRVM MTYQVPSRDAASVLK
 QDRERLRAMQKQPRFSEDQRREL GAVHSWVRKQQLPRALDVTACVDCGSSVQDPGHSD DPLF SELDGLG
 LEPMEEGGGGGCGVGGGGGGDGGEEAQTQIGAKGSSSQDSAMEEEEEQGGSSSPALPAEENSTS

TRTRPLEQKLISEEDLAANDILDYKDDDDKV

Restriction Sites: SgfI-MluI
 Cloning Scheme:

Cloning sites used for ORF Shuttling:

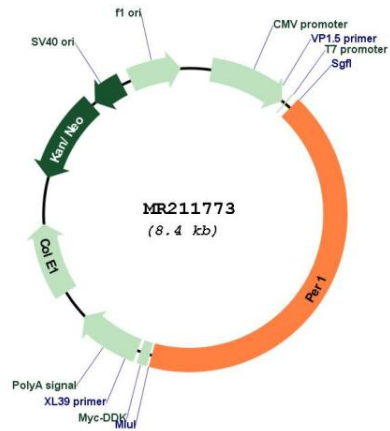


* The last codon before the Stop codon of the ORF

ACCN: BC091645
 ORF Size: 3555 bp

OTI Disclaimer:	The molecular sequence of this clone aligns with the gene accession number as a point of reference only. However, individual transcript sequences of the same gene can differ through naturally occurring variations (e.g. polymorphisms), each with its own valid existence. This clone is substantially in agreement with the reference, but a complete review of all prevailing variants is recommended prior to use. More info
OTI Annotation:	This clone was engineered to express the complete ORF with an expression tag. Expression varies depending on the nature of the gene.
Components:	The ORF clone is ion-exchange column purified and shipped in a 2D barcoded Matrix tube containing 10ug of transfection-ready, dried plasmid DNA (reconstitute with 100 ul of water).
Reconstitution Method:	<ol style="list-style-type: none">1. Centrifuge at 5,000xg for 5min.2. Carefully open the tube and add 100ul of sterile water to dissolve the DNA.3. Close the tube and incubate for 10 minutes at room temperature.4. Briefly vortex the tube and then do a quick spin (less than 5000xg) to concentrate the liquid at the bottom.5. Store the suspended plasmid at -20°C. The DNA is stable for at least one year from date of shipping when stored at -20°C.
RefSeq:	BC091645 , AAH91645
RefSeq Size:	4412 bp
RefSeq ORF:	3557 bp
Locus ID:	18626
Cytogenetics:	11 B3
MW:	125.1 kDa
Gene Summary:	This gene is a member of the Period family of genes and is expressed in a circadian pattern in the suprachiasmatic nucleus, the primary circadian pacemaker in the mammalian brain. Genes in this family encode components of the circadian rhythms of locomotor activity, metabolism, and behavior. This gene is upregulated by Clock/Arntl heterodimers but then represses this upregulation in a feedback loop using Per/Cry heterodimers to interact with Clock/Arntl. Polymorphisms in this gene may increase the risk of getting certain cancers. Two transcript variants encoding the same protein have been found for this gene. [provided by RefSeq, Jan 2014]

Product images:



Circular map for MR211773