

Product datasheet for MR211713

Dhx37 (NM_203319) Mouse Tagged ORF Clone

Product data:

Product Type: Expression Plasmids
Product Name: Dhx37 (NM_203319) Mouse Tagged ORF Clone
Tag: Myc-DDK
Symbol: Dhx37
Synonyms: Gm451; Gm1050; mKIAA1517
Mammalian Cell Selection: Neomycin
Vector: pCMV6-Entry (PS100001)
E. coli Selection: Kanamycin (25 ug/mL)
ORF Nucleotide Sequence: >MR211713 ORF sequence
 Red=Cloning site Blue=ORF Green=Tags(s)

TTTTGTAATACGACTCACTATAGGGCGGCCGGAATTCGTCGACTGGATCCGGTACCGAGGAGATCTGCC
 GCC**CGATCGCC**

ATGGGGAAGCTGCGACGCCGCTACAACGTGAAGGGCGGCTGCAGGCCGATCCCCGGCCCGCAAGGGCC
 CTGAAGCGCTCCCGTACGGCTGGAAGTGGAGGGCAAGGATGTGTTGAAAGGAGTTGATGAAAGCAATGT
 TCTGGTGTGCTGGGAAGAGAAAGAAGAAGACCAAGGCCGCCCCCATCCAAGAAAGAGAGGAAGCC
 CTGACAAAGAAGGAGAGGAAGGTGCTACAGAAGGTCTTAGAACAGAAGGAGAAGAAGAGCCAGCGTGCCG
 AACTGCTGCAGAACTGAGTGAAGTCCAAGTATCGGAGGCCGAGATGAGTCTTCTACACCACAGCCAA
 GCTCGGCACTGGGACCCGATGTATCATATCAAAGAGAGGAAGTCTGGCCAGCCTGCTGCCGGGGCCAG
 GAGAAGGTCAGTAGCCTCAGCGGGGCCACCGGAAGCGCCACAGGTCATCATCAACAGAGGAAGACTCTG
 AGTCTTCAGAAGATTCAGAGCCTGAGGAAGCCACAGCTGACCAACCTAGGACCAGCACAGGGACAGAGCC
 AGTGATCCGCCACCAGCTCCTTCTGGGATCAACAGCCCTGCACCACCCCGCAGCCCCCTCCATCTGGG
 ATCTCTGCACCTCAAAAACACCAGCCTCTGCCCGCCTCACCCGTGGCCAAGCCTGCTGTATTCATCC
 CCGTGAACCGCACCCCTGAAATGCAGGAGGAGCGGCTCAAGTCCCGATCCTCGCCGAGGAGCAAGCCAT
 CATGGAGGCGGTGGCTGAGCACCCATTGTCATTGTGTGTGGCGAGACTGGCAGTGGGAAGACTACACAG
 GTGCCCCAGTTTCTCTACGAAGCAGGCTACAGCAGTGAGGACAGCATCATCGGTGCACAGAACCCCGCC
 GAGTGGCCGAGTAGCCATGTCCAGCGGTGGCCAAGGAGATGAACCTGTACATCGGGTTGTCTCCTA
 CCAGATCCGCTACGAAGGAATGTGACAGAAGAAACCAGGATCAAGTTCATGACGACCGGTGTGCTGCTC
 AAAGAGATCCAGAAGGACTTCTGCTGCTGAAATACAAGTGGTGATCATTGACGAAGCCATGAGCGGA
 GCGTCTACACAGACATCCTTCTAGGGCTCCTGTCCCGATTGTGGCTCTCCGGGCAAGAGGCACCTGCC
 CCTCAAGTGTCTCATCATGTCCGCCACACTGCGGGTGGAGGACTCACCCAGAACCAGCGGCTCTTACC
 ACCCTCCCCGGTCATCAAGTTGAGTCGAGGCAAGTCCCTGTGACTGTACATTTCAACAAGCGGACCC
 CATTGGATGACTACAGTGGTGAATGCTTCAGGAAGGTCTGCAAGATCCACCGGATGCTGCCTGCAGGTGG
 CATCCTGGTATTCTCACAGGGCAGGCCGAGGTGCATGCCCTTTCGGTCCGGCTTAGGAAGCCCTCCCC



[View online >](#)

TTTCGTTGCTCCCAGCCACAAGAAAAGGAAGAGGACTCAGCAGAAGGGATGCGGAGGTTTAAGAAGTCCC
GGACAAGGGCTAGGAAGGCCAGGCCATGGCCTTGCCCCAGATCAACCTGGACAATTACTCTGTGCTGCC
AGCCGGCGAAGGTGATGAGGACAGGGAGGCAGAGATGGACGATGAAGAGGAGGCCCTGGGCTCTGACCTA
GATCTGGACCTGGGTGACAGTGAGGCAAATGAAGTGAGCAGCCGGATGCCTCCCTGCCCTTACAGTGC
TCCCGCTCTACTTTGCTGGCCCTGAGAAGCAGGCACAGGCTTCAAACCTCCTCCCGAGGGGACGAG
GCTGTGCGTTGTGGCCACCAATGTGGCTGAAACCTCCCTCACCATCCCTGGTATCAAGTATGTGGTGGAC
TGTGGAAAGTCAAAAAGCGCTATTATGATCGTGTACAGGCGTGTCTTCCTTCCGTGTACCTGGGTCT
CCCAAGCATCCGCTGACCAGCGGGCTGGTGTGACAGGCCACAGAGCCAGGCCACTGCTATAGGCTGTA
TTCCCTCAGCTGTTTTCGGGGACTTTGAGCAGTTTCTCCTCCAGAGATCACCCGACAGACCAGTGGAGGAC
TTGATCCTGCAAATGAAAGCACTCAGCATTGAGAAGGTGATCAACTTCCCCTTCCCACCCCGCCGTCGG
TGGAGGCCCTCGTTGCTGCAGAGGAGCTGCTGGTTGCCCTGGGGGCCCTGCAGGCACCTCAAAAACAGGA
AAGAATGAAGAAGCTACAGATGTCACAGCTGAGCTGCCCCATCACCGCGTGGGGCGACCATGTCCACC
TTCCCTGTGGCACCCCGCTATGCCAAGATGCTGGCCCTGAGCCAGCAGCATGGCTGCCTGCCCTACACCA
TTGCCATCGTGGTGCCATGACTGTGCGTGAGCTGTTGAGGAGCTGGACAGACCTGCTGCCAGTAAAA
GGAGCTTGCCGAGCTAAGGGCCCGCAGCCCGTGTGGCCAGATGAAGAGGACCTGGGCCGGCCAGGGG
CCATCTCTGAAGCTTGGCGACCTCATGGTGTGCTGGGTGCCGTGGGAGCCTGTGAGTACGCTGGCTGCT
CACCCAGTTCTGCCAAGCTAACGGACTGCGCTACAAGGCCATGCTTGAGATCCGGCGCCTGCGTGGCCA
GCTGACCACTGCAGTCAACGCAGTGTGCCCGAGGCTGGGCTTTTCTGGACCCAAAATGCAGCCTCCT
ACTGAGAGCCAGGTGACTTACCTGCGGCAAATCATGGCAGCTGGTCTGGGTGACCACCTGGCCCGCCGGG
TTCAGAGTGAGGACTTGTGGACCCCAAGTGAAGAATGCCTACAAGACTCCTCTTAGATGACCCCGT
CTTCATCCACCCAGCTCTGACTCTTCAAAGAGTTGCCTGAGTTCGTGGTCTACCAGGAAATTGTGGAG
ACAACCAAGATGTACATGAAAGGTGTCTCACCGTGGAAATCCAGTGGATCCCTCCCTGCTGCCTTCT
ACTGCCAGTTTGATGCACCCCTGGAGGAGCCAGCGCCAGTACTGCCAGAGTCAGGACAGGTGTTGTG
CCACCGGGCCAGCGTGTCTACCGTGTGGCTGGCCTCTCCCTGCCGTCCAGGTGGACTTCCCTGAAGGC
ATTGACCCTACAATACTTTGCAAAGTTTCTGCTGGAGGGACAGGTCTTCCGCAAGCTGGCTTCATTCA
AGAGCTGCCTGCTATCTAGCCCCAGCACCATGCTGAAGACCTGGGCCAGGCTGCAGCCCAGGACAGAGAC
CCTATTGAGAGCCCTCGTGGCCACAAGGCTGATTCTCGTGATTCCCTGCTGGCTGCATGGAAGAAGAAC
CCCAAATACCTGCTGGCTGAGTACTGCGAGTGGCTCCCAAAGGCTATGCACAGCGATGTTGAGAAGAACT
GGCCCCCTACCACTGACAGT

ACGCGTACGCGGCCGCTCGAGCAGAACTCATCTCAGAAGAGGATCTGGCAGCAAATGATATCCTGGATT
ACAAGGATGACGACGATAAGGTTTAA

Protein Sequence: >MR211713 protein sequence
 Red=Cloning site Green=Tags(s)

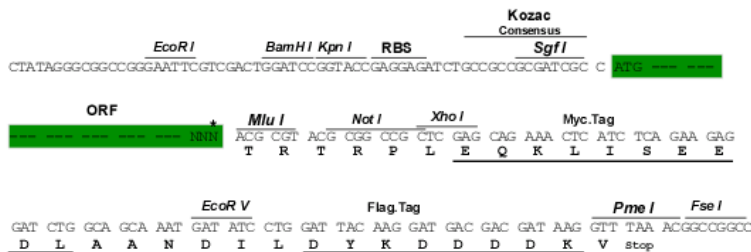
```

MGKLRRRYVNVKGR LQADPRPAKGPEAPPVRL ELEGKDV LKGVDESNV LVLPGKRKKKTKAPPPSKKERK
LTKKERKVLQK VLEQKEKKSQRAELLQKLSEVQVSEAMSLFYTTAKLGTGDRMYHIKERKSGQPAARGQ
EKVSSLSGAHRKRHRSSSTEEDSESSDSEPEEATADQPRSTGTPEVHPPPPAPSGINS PAPTQPPPSG
ISAPKTPASAPPPPAKPAVFIPVNRTPEMQEERLKLPI LAEEQAI MEAVA AEHP I VIVCGETGSGKTTQ
VPQFLYEAGYSS EDSIIIGVTEPRRVA AVAMSQRVAKEMNLSHRVVS YQIRYEGNVTEETRIKFMTDGVLL
KEIQKDFLLLKYKVVIIDEAHERSVYTDILLGLLSRIVALRAKRHLPLKLLIMSATLRVEDFTQNQRLFT
TPPPVIKVESRQFPVTVHFNKRTPLDDYSGECFRKVC KIHRMLPAGGILVFLTGQAEVHALCRRLRKAFF
FRCSQPQEKEEDSAEGMRRFKSRTRARKAQAMALPQINLDNYSVLPAGEGDEDREAEMDDEEEALGSDL
DLDLGDSEANEQE QPDASLPLHVLPLYSLLAPEKQAQVFKPPPEGTRLCVVATNVAETSLTIPGIKYVVD
CGKVKKRYDRVTGVSSFRVTWVSQASADQRAGRAGRTEPGHCYRLYSSAVFGDFEQFPPEITRRPVED
LILQMKALSIEKVINFPFPTPPSVEALVAAEELLVALGALQAPPKQERMKKLQMSQLSCPITALGRMTST
FPVAPRYAKMLALSQQHGCLPYTIAIIVAAMTVRELFEELDRPAASEKEL AELKGRRARVAQMKTWAGQG
PSLKLGDLMVLLGAVGACEYAGCSPQFCQANGLRYKAMLEIRRLRGQLTAVNAVCEAGLFLDPKMQPP
TESQVTYLRQIMAAGLDHLARRVQSEDLDPKWK NAYKTPLLDDPVFIHPSSVLFKELPEFVVYQEI VE
TTKMYMKGVSTVEIQWIPSLPSYCQFDAPLEEPAPSYCPESGQVLC HRASV FYRVGWPLPAVQVDFPEG
IDRYKYFAKFLLEGQVFRKLASFKSCLLSSPSTMLKTWARLQPRTE TLLRALVAHKADSRD SLLAAWKKN
PKYLLAEYCEWLPKAMHSDVEKNWPPTTDS
    
```

TRTRPLEQKLISEEDLAANDILDYKDDDDKV

Restriction Sites: SgfI-MluI
 Cloning Scheme:

Cloning sites used for ORF Shuttling:

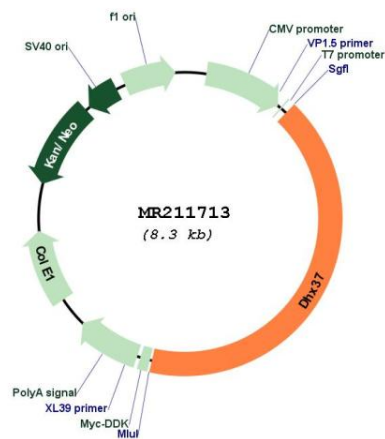


* The last codon before the Stop codon of the ORF

ACCN: NM_203319

ORF Size: 3453 bp

OTI Disclaimer:	The molecular sequence of this clone aligns with the gene accession number as a point of reference only. However, individual transcript sequences of the same gene can differ through naturally occurring variations (e.g. polymorphisms), each with its own valid existence. This clone is substantially in agreement with the reference, but a complete review of all prevailing variants is recommended prior to use. More info
OTI Annotation:	This clone was engineered to express the complete ORF with an expression tag. Expression varies depending on the nature of the gene.
Components:	The ORF clone is ion-exchange column purified and shipped in a 2D barcoded Matrix tube containing 10ug of transfection-ready, dried plasmid DNA (reconstitute with 100 ul of water).
Reconstitution Method:	<ol style="list-style-type: none"> 1. Centrifuge at 5,000xg for 5min. 2. Carefully open the tube and add 100ul of sterile water to dissolve the DNA. 3. Close the tube and incubate for 10 minutes at room temperature. 4. Briefly vortex the tube and then do a quick spin (less than 5000xg) to concentrate the liquid at the bottom. 5. Store the suspended plasmid at -20°C. The DNA is stable for at least one year from date of shipping when stored at -20°C.
RefSeq:	<u>NM_203319.1, NP_976064.1</u>
RefSeq Size:	4235 bp
RefSeq ORF:	3453 bp
Locus ID:	208144
Cytogenetics:	5 G1.1
MW:	128.3 kDa

Product images:


Circular map for MR211713