

Product datasheet for MR211695

Synrg (NM_194341) Mouse Tagged ORF Clone

Product data:

Product Type: Expression Plasmids
Product Name: Synrg (NM_194341) Mouse Tagged ORF Clone
Tag: Myc-DDK
Symbol: Synrg
Synonyms: Ap1gbp1; SYNG
Vector: pCMV6-Entry (PS100001)
E. coli Selection: Kanamycin (25 ug/mL)
Cell Selection: Neomycin
ORF Nucleotide Sequence: >MR211695 representing NM_194341
 Red=Cloning site Blue=ORF Green=Tags(s)

TTTTGTAATACGACTCACTATAGGGCGGCCGGGAATTCGTCGACTGGATCCGGTACCGAGGAGATCTGCC
 GCCGGATCGCC

ATGGCGCTGCGGCCGGGAGCCGGAGCCAGCGCGCGGGGGCGGGCGGGGCCGGGGCCGGGGGCGGGCAGGCA
 GCTTCATGTTTCTGTTCAGGGCGGAATGAGACCCCTCAAGGCTGATTCCAATGCAACAGCAAGGATT
 CCCTATGGTCTGTGCATGCAGCCCAATATGCAAGGCATGATGGGAATGAATTACAGCTCTCAGATGTCC
 CAAGGACCGATTGCAATGCAGGCAGGAATACCAATGGGGCCAATGCCAGCAGCGGGTGTGCCTTTCTGG
 GTCAGCCACCTTTCTTGAGCATGCGTCCTGCAGGCCACAGTACACTCCAGACATGCAGAGCAGTGTTC
 GGAAGAGCAACAAAAACGATTTGAACAACAACAAAAGCTCTTAGAAGAAGAAAAGAAAAGACGTCAGTTT
 GAAGAGCAAAAGCAAAAGCTCAGACTTCTCAGCAGCGTGAAGCCCAAGACAGGAGAGAAGAACAGAGACG
 ATGCTTTGGAAGCCATAAAAGGAACTTGGATGGGTTTTCCAGAGATGCTAAGATGCACCCCACTCCAGC
 ATCACATCCAAGAAACAAGGTGTGGCGTGTTCCTCTCAGGACCTGCTCAGTCCAGAATGCCTCCT
 TGGATTTACAATGAGAGTTTGGTCCAGATGCCTATAAGAAAATTTAGAAAACCAATGACTCCAAGT
 GAATAGATACTGCTAACTTTATCCCATCTGATGTCATCTGGACTTCCAGGGAACTCCGGACAGAT
 ATGGGCCTTAGCTAATCGAACCCACCTGGCAGGCTCACTAAGGAGGAGCTTTACACGGTCTCGCCATG
 GTAGCAGTAACACAGAGGGGTGTTCTGCCATGAGCCCTGATGCTTTGAGCCAGTTCCTGCGGCTCCCA
 TCCCTACCTTAAGCGGCTTCTCTATGACTCTGCCTACCCAGTGAAGCCAGCCAAACGGCGATGCCCTCTGG
 CCCTACAGGCTCCATGCCCTCACCTTGGACAACCCATCATGGGTATCAACCTTGTGGACCAGTGGGT
 GGAGCTGCAGCACCAACTCCAGTGGCTTCATGCCAGCCTACCCATCAAACAGGTGGGAAAGACAGAAG
 AAGATGACTTCCAGGATTTTCAAGATGCTTCGAAATCAGGATCCATCGATGATTCCTTCACTGACTTCCA
 AGAGATGCCTGCTTCTCAAAAACAGTAATTCAGCATGGAACAGTGTCCATCACTCTTGATCCCA
 TTTCTGGAATAAAGCCTCCACAGACAAATACGCAGTGTTCAAAGGATTTCCACTGACAAGCCCTCTG
 AAAACCTGCTTCGTTTGGAGAGTCTGGTGATAAATACAGTGTTCAGGGAACCTGAGCAAAACGACAGA
 CAGTAAACCTTAGGAGAGAGCTTTGCCGAGTTCAGATCCACAGGAACCGATGATGGCTTCACTGACTTC
 AAGACCCTGATAGTGTGCACCCCTAGAGCCACCCACAAAAGACACTTCCATCAGCTTTGCTCAG



[View online »](#)

GAGCTGCACAGCAGACACAGACACAGGTGAAAACCCCTCTGAACCTAGAAGATCTAGATATGTTCTCCTC
 AGTGGATTGCAGTGGCGAGAAACAGGTGCCCTTTTCAGCTACATTTAGCACAGCAAAGTCCGTTTCCACT
 CGACCTCAGCCAGCGGGCTCTGCAGCAGCGTACGACGACTGGCATCCACTAAAACCTTCTAGTTTGGCAG
 ATGATTTTGGAGAGTTCAACCTCTTTGGGGAGTATTCAAACCTGCATCTGCTGGGGAGCAGGACGACTT
 TGCAGATTTTATGGCTTCGGTAACAGCTCCATTTTCATCTGAGCCAAAAGCAAGTGACAAGTATGAAGCC
 CTCAGGGAGGAAGTGAAGTCCCAGCCCTTGTCCAGCAGCACTGTGGAAGGGGCACAGCACCCACCTGCTG
 CGGCAACCAAGTATGATGTCTTCAAACAGCTGTCCCTAGAGGGCGCTGGCTGGCCATGGAGGAGTCAA
 AGAGAACAACCTTCTCCACCAAGAGTGAAGATGACTTTGCGGACTTCCACTCCAGTAAATTCATCCACG
 AGCTCAGACAAAATCCCTGGGAGAGAAAAGCCGTGGCTTTTCAGACATGCCAAAAGAAGACTCCTCCTCGTGA
 AGTCTTTAGACCTCCCCTCCATCGTGGCAGCAGTGTGGCAAGGAGGACTCTGAAGATGCATTTCTGT
 TCAATTTGACATGAAATGGCTGATGTGGGAGGAGATCTTAAGCATGTCATGTCTGATAGCTCTTTGGAT
 TTACCAACAGTTAGTGGCCAGCATCCTCCTGCCGAGGATCGGCCTTGGCCAGTGAAGACGCTCTCCAG
 AGACTGCCTTCCCAGCTTTTCCAGCTTTAAAGACATGATGCCTCAGACCACTGAGCAGAAAAGAGTTTGA
 AAGTGGGACTTCCAGGATTTACCAGGCAGGACATGCCACGGTGGACCGCAGCAAGAAACCTCATGT
 CCAAGCCCGGCTTCCAGTGTGGCTTCGACGAGACCCCAAGGAGGGTGCAGACGACTTTGGAGAATTTT
 AAAGTAAAAGTCCAAAATCAGCAAGTTTACTTCTTAGTAGCTAATCCAGAGCAAAAATGAAAATCCAG
 TGAAGAAATGATCAAAAGTGAGCTGGCAACCTTTGACCTTTCTGTTCAAGGATCACACAAGAGGAGCTTG
 AGCCTTGGGGATAAAGAAATAAGCCGGTCTCTCCTTCCCAGCCCTGGAGCAGCCCTTCCAGAGACCGGT
 CCAACACTCTGAGTGAAGGGCTGCGCTGCCCGTATCCGAGACAAGTACAAGGATCTCACTGGCAGGTT
 GGAGGAAAATGAGAGATACGCGTATGAGTGGCAGAGATGCCTAGGGAGCGCGTGGATGTCATTAAGAAG
 GCAATGACACCTTAAATGGCATTAGCAGCAGTGTCTTGCACAGAAGTTATCCAGTCCGCTCAAGGCA
 TGGAGTATCTTCTAGGTGTGGTGAAGTGTACCGCGTAACCAAGCGTGTGGAGCTGGGGATAAAGCCAC
 TGCTGTGTGATGAGAAAACCCAGCAGTTTGTGAAGGACATCGATAAAGTGTGGAACAACCTTAAATCGGC
 TTCATGTCACTTCCACACTCACACCAGATGAGAATTCAGTGGATTTTCTCCTGTATGTTACGGCCCG
 GGATCAAAAACGCTCAGGAGCTGGCTTGTGGAGTGTGTCTTAAATGTGGACTCCAGGACCGGGCATT
 CAACTCGGAGACAGACGCTTCAAGCTGGCCTACGGAGGACACCAGTACCACGCCAGCTGTGCCAACTTC
 TGGATCAACTGTGTTGAACCAAGCCTCCCAGCCTCCTTGGCAGATCTGCT

AGCGGACCGACGCGTACGCGGCCGCTCGAGCAGAACTCATCTCAGAAGAGGATCTGGCAGCAAATGATATCC
 TGGATTACAAGGATGACGACGATAAGGTTTAA

Protein Sequence:

>MR211695 representing NM_194341
 Red=Cloning site Green=Tags(s)

MALRPGAGASGAAGAGAGPGGAGSFMFPVAGGMRPPQGLIPMQQQGPFPMVSMQPNMQMGMNYSSQMS
 QGPIAMQAGIPMGMPAAAGVPPFLGQPPFLSMRPAQPQYTPDMQKQFAEEQQKRFEEQQKLEERKRRQF
 EEQKQKLRLLSSVKPKTGEKNRDDALEAIKGNLDGFSRDAKMHPPTASHPKKQGVGVFSPQDPAQSRMPP
 WIYNESLVPDAYKKILETTMTPTGIDTAKLYPILMSSGLPRETLGQIWALANRTPGRLTKEELYTVLAM
 VAVTQRGVPAMSPDALSQFPAAPIPTLSGFPMPLTPVVSQPTAMPSPGPTGSMPLTLGQPIMGINLVGPVG
 GAAAPTSSGFMPAYPSNQVKGTEEDDFQDFQDASKSGSIDDSFTDFQEMPASSKTSNSQHNSAPSLLIP
 FPGTKASTDKYAVFKGISTDKPSENPAFSGESGDKYSAFRELEQTDSKPLGESFAEFRSTGTDGDFDF
 KTADSVSPLPPTKDTFPAFASGAAQQTQVKTPLNLEDLDMFSSVDCSGEKQVFPFSAFSTAKSVST
 RPQPAGSAAAASALASTKTSLLADDFGEFNLFGYEYNSPASAGEQDDFADFMAFGNSSISSEPKASDKYEA
 LREEVSPSPLSSSTVEGAQHPPAAATKYDVFKQLSLEGAGLAMEEFKENTSSTKSEDDFADFHSSKFSST
 SSDKSLGEKAVAFRHAKEDSSSVKSLDLPISIGGSSVGKEDSEDALSVQFDMKLADVGGDLKHMVSDSSLD
 LPTVSGQHPPAAGSALASEDALPETAFAFASFKDMMPQTTEQKEFESGDFQDFTRQDMPTVDRSQETSC
 PSPASSVASHETPKEGADDFGEFQSEKSKISKFDLIVANSQSKMKSSEEMIKSELATFDLIVQVQSHKRS
 SLGDKEISRSSPSPALEQPFDRSNTLSERAALPVIRDKYKDLTGEVEENERYAYEWQRCLGSALDVIIK
 ANDTLNGISSAVCTEVIQSAQMEYLLGVVEVYRVTKRVELGIKATAVCSEKLQQLKIDKVVNNLIG
 FMSLATLTPDENSLDFSSCMLRPGIKNAQELACGVCLLNVDSRSRAFNSSETDSFKLAYGGHQYHASCANF
 WINCVEPKPPGLLLPDLL

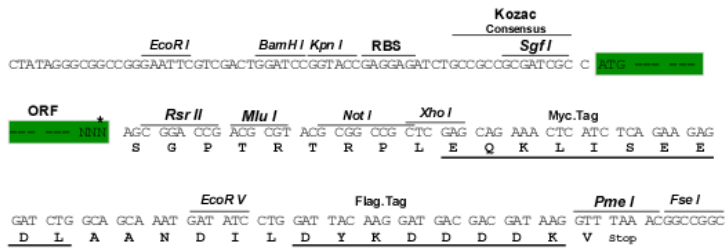
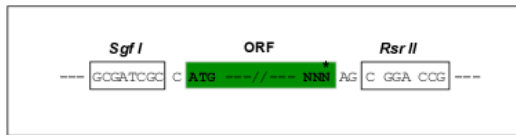
SGPTRRRLKQLISEEDLAANDILDYKDDDDKV

Restriction Sites:

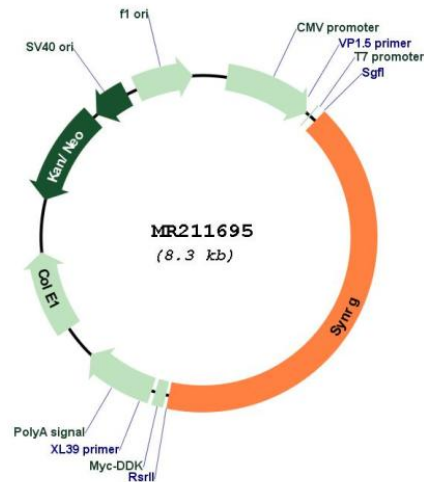
Sgfl-RsrII

Cloning Scheme:

Cloning sites used for ORF Shuttling:



* The last codon before the Stop codon of the ORF

Plasmid Map:


ACCN: NM_194341

ORF Size: 3414 bp

OTI Disclaimer: The molecular sequence of this clone aligns with the gene accession number as a point of reference only. However, individual transcript sequences of the same gene can differ through naturally occurring variations (e.g. polymorphisms), each with its own valid existence. This clone is substantially in agreement with the reference, but a complete review of all prevailing variants is recommended prior to use. [More info](#)

OTI Annotation: This clone was engineered to express the complete ORF with an expression tag. Expression varies depending on the nature of the gene.

Components: The ORF clone is ion-exchange column purified and shipped in a 2D barcoded Matrix tube containing 10ug of transfection-ready, dried plasmid DNA (reconstitute with 100 ul of water).

Reconstitution Method:

1. Centrifuge at 5,000xg for 5min.
2. Carefully open the tube and add 100ul of sterile water to dissolve the DNA.
3. Close the tube and incubate for 10 minutes at room temperature.
4. Briefly vortex the tube and then do a quick spin (less than 5000xg) to concentrate the liquid at the bottom.
5. Store the suspended plasmid at -20°C. The DNA is stable for at least one year from date of shipping when stored at -20°C.

RefSeq: [NM_194341.2](#)

RefSeq Size: 4589 bp

RefSeq ORF: 3417 bp

Locus ID: 217030

UniProt ID: [Q5SV85](#)

Cytogenetics: 11 C

MW: 122.5 kDa

Gene Summary: May play a role in endocytosis and/or membrane trafficking at the trans-Golgi network (TGN).
May act by linking the adapter protein complex AP-1 to other proteins (By similarity).
[UniProtKB/Swiss-Prot Function]