

Product datasheet for MR211669

Map4 (NM_008633) Mouse Tagged ORF Clone

Product data:

Product Type: Expression Plasmids
Product Name: Map4 (NM_008633) Mouse Tagged ORF Clone
Tag: Myc-DDK
Symbol: Map4
Synonyms: AA407148; MAP-4; Mtap-4; Mtap4
Mammalian Cell Selection: Neomycin
Vector: pCMV6-Entry (PS100001)
E. coli Selection: Kanamycin (25 ug/mL)
ORF Nucleotide Sequence: >MR211669 ORF sequence
 Red=Cloning site Blue=ORF Green=Tags(s)

TTTTGTAATACGACTCACTATAGGGCGGCCGGAATTCGTCGACTGGATCCGGTACCGAGGAGATCTGCC
 GCC**CGATCGCC**

ATGGCCGACCTCAGTCTTGTGGATGCGTTGACAGAACCACCTCCAGAAATTGAGGGAGAAATAAAGCGAG
 ACTTCATGGCTGCGCTGGAGGCAGAGCCCTATGATGACATCGTGGGAGAACTGTGGAGAAAAGTGTG
 TATTCCTCCTGGATGGTGTGATGAGAAAACCGGAACTCAGAGTCCAAAAAGAAACCTGCTTAGACT
 AGCCAGGTTGAAGGTATCCCATCTCTAAACCAACTCCTAGCCAATGGTGATCATGGAATGGAGGGGA
 ATAACTGCAGGCTCTCAACTGACTTCTTGAAGAGAGAGTGGACTATCCGGATTATCAGAGCAGCCA
 GAACTGGCCAGAAGATGCAAGCTTTTGTTCAGCCTCAGCAAGTGTAGATACTGACCAGGCTGAGCCC
 TTTAACGAGCACCGTGATGATGGTTGGCAGATCTGCTTTTGTCTCCAGTGGACCCACGAACGCTTCTG
 CATTTACAGAGCGAGACAATCCTTCAGAAGACAGTTACGGTATGCTTCCCTGTGACTCATTTGCTCCAC
 GGCTGTTGATCTCAGGAGTGGTCTGTGGGAGCCCAAATCTCCATGTTAGAGTCTGTGCTCCCA
 GAGGTTACTATAGAAACCTACAGCCAGCAACAGAGCTCTCAAGGCAGCAGAAGTGAATCAGTGAAAG
 AGCAGTGCAGCTAAAGCATTGGAAACGATGGCAGAGCAGACCCTGATGTGGTGCCTCTCCATCCAC
 AGACACAACACCAGGCCAGACAGAGGCAGCACTGGCTAAAGACATAGAAGAGATCACCAAGCCAGAT
 GTGATATTGGCAAATGTCACGCAGCCACTACTGAATCGGATATGTTCTGGCCAGGACATGGAACACT
 TCACAGGAACAGAGGCAGCCACGCTAACAAATATCATATTGCCTACAGAACCAGACGAATCTTCAACCA
 GGATGTAGCACCACTATGGAAGAAGAAATGTCCAGGCAATGATACGACATCCCCAAAGAAACAGAG
 ACAACTTCCAATAAAAATGGACTTGGCACCCTGAGGATGTGTTACTTACCAAGAAACAGAACTAG
 CCCCAGCAAGGGCATGGTTTCACTCTCAGAAATAGAAGAGGCTCTGGCAAAGAATGATGAGTCTCTGC
 AGAAATACCTGTGGCTCAGGAGACAGTGGTCTCAGAAACAGAGGTGGTCTGGCAATAGAAGTGGTACTG
 CCCTCAGATCCCATAACAACATTGACAAAGGATGTGACTCCCTTAGAAGCAGAGAGACCGTTGGTGA
 CGGACATGACTCCATCTCTGAAACAGAAATGACCCTAGGCAAAGAGACAGCTCCACCCACAGAAACAA
 TTTGGCATGGCCAAAGACATGTCTCCACTCCCAGAATCAGAAGTACTCTGGGCAAGGACGTGGTTATA



[View online »](#)

CTTCCAGAAACAAAGGTGGCTGAGTTTAAACAATGTGACTCCACTTTCAGAAGAAGAGGTAACCTCAGTCA
AGGACATGTCTCCGTCTGCAGAAACAGAGGCTCCCCTGGCTAAGAATGCTGATCTGCACTCAGGAACAGA
GCTGATTGTGGACAACAGCATGGCTCCAGCCTCCGATCTTGCACTGCCCTTGAAACAAAAGTAGCAACA
GTTCCAATTAAGACAAAGGAACGTACAGACTGAAGAAAAACCACGTGAAGACTCCCAGTTAGCATCTA
TGCAGCACAAGGGACAGTCAACAGTACCTCCTTGACGGCTTACCAGAACCAAGCTCAAAGCTGCAGAACA
AATGCTACCTTACCAATAGATGCACCTTCTCCATTAGAGAACTTAGAGCAGAAGGAAACGCCTGGCAGC
CAGCCTTCTGAGCCTTGCTCAGGAGTATCCCGGCAAGAAGAAGCAAAGGCTGCTGTAGGTGTGACTGGAA
ATGACATCACTACCCCGCCAAACAAGGAGCCACCACCAAGCCCAGAAAAGAAAGCAAAGCCTTGGCCAC
CACTCAACCTGCAAAGACTTCAACATCGAAAGCCAAAACACAGCCCACTTCTCTCCCTAAGCAACCAGCT
CCCACCACCTCTGGTGGTTGAATAAAAAACCATGAGCCTCGCCTCAGGCTCAGTGCCAGCTGCCCCAC
ACAAACGCCCTGCTGCTGCCACTGCTACTGCCAGGCCTTCCACCCTACCTGCCAGAGACGTGAAGCCAAA
GCCAATTACAGAAGCTAAGGTTGCCGAAAAGCGGACCTTCCATCCAAGCCTTCACTGCCCCAGCCCTC
AAACCTGGACCTAAAACCACCCCAACCGTTTCAAAGCCACATCTCCCTCAACTTTGTTTCCACTGGAC
CAAGTAGTAGAAGTCCAGCTACAACCTGCCTAAGAGGCCAACCAAGCATCAAGACTGAGGGGAAACCTGC
TGATGTCAAAGGATGACTGCTAAGTCTGCCTCAGCTGACTTGAGTCGCTCAAAGACCACCTCTGCCAGT
TCTGTGAAGAGAAACACCACTCCCACTGGGGCAGCACCCCAAGCAGGGATGACTTCCACTCGAGTCAAGC
CCATGTCTGCACCTAGCCGCTTCTTCTGGGGCTCTTCTGTGGACAAGAAGCCCACTTCCACTAAGCCTAG
CTCCTCTGCTCCCAGGTGAGCCGCTGGCCACAACCTGTTTCTGCCCTGACCTGAAGAGTGTTCGCTCC
AAGGTCGGCTCTACAGAAAACATCAAACACCAGCCTGGAGGAGGCCGGCCAAAGTAGAGAAAAAACAAG
AGGCAGCTACCACAGCTGGGAAGCCTGAACCTAATGCAGTCACTAAAGCAGCCGGCTCCATTGCGAGTGC
ACAGAAACCGCTGCTGGGAAAGTCCAGATAGTATCAAAAAAGTGAGCTACAGCCATTTCAATCCAAG
TGTGGTTCCAAGGACAATATTAAGCATGTCCCTGGAGGTGGCAATGTTTCAAGTTCAGAACAAAGAAAGTGG
ACATATCCAAGTCTCCTCCAAGTGTGGTCCAAAGCTAATATCAAGCACAAGCCTGGTGGAGGAGATGT
CAAGATTGAAAGTCAGAAGTTGAACTTCAAGGAGAAGGCCAAGCCAAAGTGGGATCCCTTGATAACGTG
GGCCACTTGCCTGCAGGAGGTGCCGTGAAGACTGAGGGCGGTGGCAGTGAGGCCCTTCCGTGTCCAGGCC
CCCCCGTGGGGAGGAGCCAGTCACTCCCTGAGGCTGCGCCTGACGCTGGCGCCCTACTTCAGCCAGTGG
CCTCAGTGGCCACACCACCTGTGAGGGGTGGTGACCAAGGGAGCCCCAGACCTTGGACAGCCAGATC
CAGGAGACAAGCATC

ACGCGTACGCGGCGCTCGAGCAGAACTCATCTCAGAAGAGGATCTGGCAGCAATGATATCTGGATT
ACAAGGATGACGACGATAAGGTTTAA

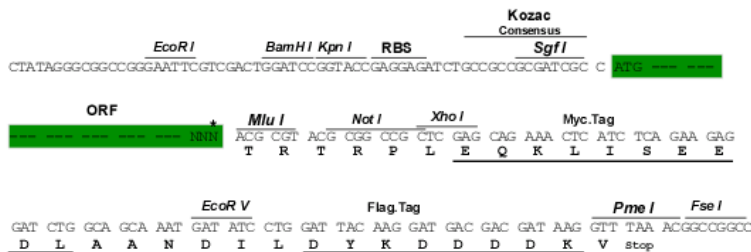
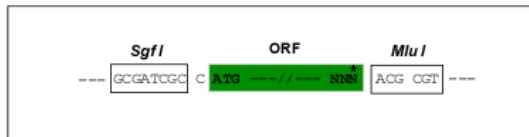
Protein Sequence: >MR211669 protein sequence
 Red=Cloning site Green=Tags(s)

MADLSLVDALTEPPPEIEGEIKRDFMAALEAEPYDDIVGETVEKTEFIPLLDGDEKTNSESKKKPCLDTSQVEGIPSSKPTLLANGDHGMEGNNTAGSPTDFLEERVDYDPYQSSQNPEDASFQFPQQVLDTDQAEPFNEHRDDGLADLLFVSSGPTNASAFTERDNPSEDSYGMPLCDSFASTAVVSQEWVSVGAPNSPCSESCVSP EVTIETLQPATELSKAAEVEVKEQLPAKALETMAEQTTDVVHSPSTDTTPGPDTEAALAKDIEEITKPDVILANVTQPSTESDMFLAQDMELLTGTEAAHANNIILPTEPDESSTKDVAPPMEEEIVPGNDTTSPKETE TTLPIKMDLAPPEDVLLTKETELAPAKGMVSLSEIEEALAKNDESSAEIPVAQETVVSETEVVLAIEVVLPSPDITTLTKDVTLPLEAERPLVDMTPSLETMTLGKETAPPTETNLGMAKMSPLPESEVTLGKDVIILPETKVAEFNNVPLSEEEVTSVKDMSPSAETEAPLAKNADLHSGTELIVDNMAPASDLALPLETKVATVPIKDKGTQVQTEEKPREDSQLASMQHKGQSTVPPCTASPEPVKAAEQMSTLPIDAPSLENLEQKETPGSQPSEPCSGVSRQEEAKAAVGVGTGNDITTPPNKEPPPSPEKKAKPLATTQPAKTSTSKAKTQPTSLPKQPA PTTSGGLNKKPMSLASGSVPAAPHKRPAATATARPSTLPARDVKPKPITEAKVAEKRTSPSKPSSAPAL KPGPKTTPTVSKATSPSTLVSTGPPSSRSPATTLPKRPTS IKTEGKPADVKRMTAKSASADLSRSKTTSSAS SVKRNTPPTGAAPPAGMTSTRVKPMSAPSRSSGALSVDKKTSTKPSAPRVSRLATTVPADLKSRSVSKVKGSTENIKHQGGRAKVEKKTEAATTAGKPEPNAVTKAAGSISAQKPPAGKVQIVSKVSYSHIQSK CGSKDNIKHPGGNVQIQNKKVDISKVSSKCGSKANIKHKPGGDVKIESQKLNFKKAQAKVGSGLDNV GHLPAGGAVKTEGGGSEALPCGPPPAGEPVIPEAAPDAGAPTSASGLSGHTTSLGGGDQREPQTLDLSQIQETS I

TRTRPLEQKLISEEDLAANDILDYKDDDDKV

Restriction Sites: SgfI-MluI
 Cloning Scheme:

Cloning sites used for ORF Shuttling:



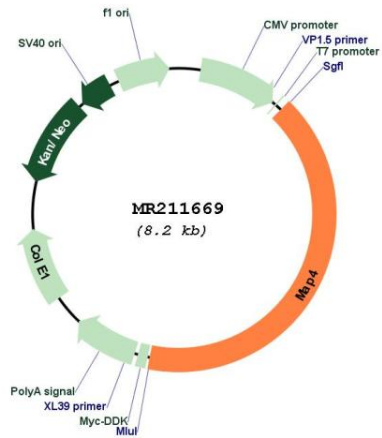
* The last codon before the Stop codon of the ORF

ACCN: NM_008633

ORF Size: 3378 bp

OTI Disclaimer:	The molecular sequence of this clone aligns with the gene accession number as a point of reference only. However, individual transcript sequences of the same gene can differ through naturally occurring variations (e.g. polymorphisms), each with its own valid existence. This clone is substantially in agreement with the reference, but a complete review of all prevailing variants is recommended prior to use. More info
OTI Annotation:	This clone was engineered to express the complete ORF with an expression tag. Expression varies depending on the nature of the gene.
Components:	The ORF clone is ion-exchange column purified and shipped in a 2D barcoded Matrix tube containing 10ug of transfection-ready, dried plasmid DNA (reconstitute with 100 ul of water).
Reconstitution Method:	<ol style="list-style-type: none">1. Centrifuge at 5,000xg for 5min.2. Carefully open the tube and add 100ul of sterile water to dissolve the DNA.3. Close the tube and incubate for 10 minutes at room temperature.4. Briefly vortex the tube and then do a quick spin (less than 5000xg) to concentrate the liquid at the bottom.5. Store the suspended plasmid at -20°C. The DNA is stable for at least one year from date of shipping when stored at -20°C.
RefSeq:	NM_008633.2 , NM_008633.3 , NM_008633.4 , NP_032659.2
RefSeq Size:	5673 bp
RefSeq ORF:	3378 bp
Locus ID:	17758
UniProt ID:	P27546
Cytogenetics:	9 59.83 cM
MW:	117.4 kDa
Gene Summary:	Non-neuronal microtubule-associated protein. Promotes microtubule assembly. [UniProtKB/Swiss-Prot Function]

Product images:



Circular map for MR211669