

## Product datasheet for **MR211666**

### Map4 (NM\_008633) Mouse Tagged ORF Clone

#### Product data:

**Product Type:** Expression Plasmids  
**Product Name:** Map4 (NM\_008633) Mouse Tagged ORF Clone  
**Tag:** Myc-DDK  
**Symbol:** Map4  
**Synonyms:** AA407148; MAP-4; Mtap-4; Mtap4  
**Vector:** pCMV6-Entry (PS100001)  
**E. coli Selection:** Kanamycin (25 ug/mL)  
**Cell Selection:** Neomycin  
**ORF Nucleotide Sequence:** >MR211666 representing NM\_008633  
Red=Cloning site Blue=ORF Green=Tags(s)

TTTTGTAATACGACTCACTATAGGGCGCCGGGAATTCGTCGACTGGATCCGGTACCGAGGAGATCTGCC  
GCC**CGGATCGCC**

ATGGCCGACCTCAGTCTTGTGGATGCGTTGACAGAACCACCTCCAGAAATTGAGGGAGAAATAAAGCGAG  
ACTTCATGGCTGCGCTGGAGGCAGAGCCCTATGATGACATCGTGGGAGAACTGTGGAGAAAAGTGGT  
TATTCCTCCTGGATGGTATGAGAAAACCGGAACTCAGAGTCCAAAAAGAAACCTGCTTAGACT  
AGCCAGGTTGAAGGTATCCCATCTTCTAAACCAACTCCTAGCCAATGGTGATCATGGAATGGAGGGGA  
ATAACTGCAGGGTCTCCAAGTACTTCTTGAAGAGAGAGTGGACTATCCGGATTATCAGAGCAGCCA  
GAACTGGCCAGAAGATGCAAGCTTTTGTTCAGCCTCAGCAAGTGTAGATACTGACCAGGCTGAGCCC  
TTTAACGAGCACCAGTATGATGGTTTGGCAGATCTGCTCTTTGTCTCCAGTGGACCCACGAACGCTTCTG  
CATTTACAGAGCGAGACAATCCTTCAGAAGACAGTTACGGTATGCTTCCCTGTGACTCATTGCTCCAC  
GGCTGTTGTATCTCAGGAGTGGTCTGTGGGAGCCCAACTCTCCATGTTTCAGAGTCTGTGTCTCCCA  
GAGGTTACTATAGAAACCCTACAGCCAGCAACAGAGCTCTCAAGGCAGCAGAAGTGAATCAGTGAAG  
AGCAGTCCAGCTAAAGCATTGGAACGATGGCAGAGCAGACCACTGATGTGGTGCACCTCCATCCAC  
AGACACAACACCAGGCCAGACACAGAGGAGCACTGGCTAAAGACATAGAAGAGATCAGCAAGCAGAT  
GTGATATTGGCAATGTACGCAGCCATCTACTGAATCGGATATGTTCTGGCCAGGACATGGAATAC  
TCACAGGAACAGAGGCAGCCACGCTAACAAATATCATATTGCCTACAGAACCAGAGCAATCTTCAACCA  
GGATGTAGCACCACCTATGGAAGAAGAAATGTCCAGGCAATGATACGACATCCCCAAAGAAACAGAG  
ACAACACTTCCAATAAAAATGGACTTGGCACCACCTGAGGATGTGTTACTTACCAAGAAACAGAAGTAG  
CCCCAGCAAGGGCATGGTTTCACTCTCAGAAATAGAAGAGGCTCTGGCAAGAATGATGAGTCTCTGC  
AGAAATACCTGTGGCTCAGGAGACAGTGGTCTCAGAAACAGAGGTTGCTGGCAACAGAAGTGGTACTG  
CCCTCAGATCCCATAACAACATTGACAAAGGATGTGACTCCCTTAGAAGCAGAGAGACCGTTGGTGA  
CGGACATGACTCCATCTCTGAAACAGAAATGACCCTAGGCAAAGAGACAGCTCCACCCACAGAAACAAA  
TTTGGGATGGCCAAAGACATGTCTCACTCCAGAAATCAGAAGTACTCTGGGCAAGGACGTGGTTATA  
CTTCCAGAAACAAAGGTGGCTGAGTTTAACAATGTGACTCCACTTTCAGAAGAAGAGGTAACCTCAGTCA



AGGACATGTCTCCGTCTGCAGAAACAGAGGCTCCCTGGCTAAGAATGCTGATCTGCACTCAGGAACAGA  
 GCTGATTGTGGACAACAGCATGGCTCCAGCCTCCGATCTTGCCTTGGAAACAAAAGTAGCAACA  
 GTTCCAATTAAGACAAAGGAAGTACAGACTGAAGAAAAACCGTGAAGACTCCCAGTTAGCATCTA  
 TGCAGCACAAGGGACAGTCAACAGTACCTCCTTGACGGCTTACCAGAACAGTCAAAGCTGCAGAAC  
 AATGTCTACCTTACCAATAGATGCACCTTCTCATTAGAGAACTTAGAGCAGAAGGAAACGCCTGGCAGC  
 CAGCCTTCTGAGCCTTGGCTCAGGAGTATCCCGCAAGAAGAAGCAAAGGCTGCTGAGGTGACTGGAA  
 ATGACATCACTACCCCGCAAACAAGGAGCCACCACCAAGCCAGAAAAGAAAGCAAAGCCTTTGGCCAC  
 CACTCAACCTGCAAAGACTTCAACATCGAAAGCCAAAACACAGCCCACTTCTCCTAAGCAACCAGCT  
 CCCACCACCTCTGGTGGTTGAATAAAAAACCATGAGCCTCGCCTCAGGCTCAGTGCCAGCTGCCCCAC  
 ACAAACGCCCTGCTGCTGCCACTGCTACTGCCAGGCTTCCACCCTACCTGCCAGAGACGTGAAGCCAAA  
 GCCAATTACAGAAGCTAAGGTTGCCGAAAAGCGGACCTTCCATCCAAGCCTTCTGCCCCAGCCCTC  
 AAACCTGGACCTAAAACCACCCCAACCGTTTCAAAGCCACATCTCCCTCAACTTGTGTTCCACTGGAC  
 CAAGTAGTAGAAGTCCAGCTACAACCTGCCTAAGAGGCCAACAGCATCAAGACTGAGGGGAAACCTGC  
 TGATGTCAAAGGATGACTGCTAAGTCTGCCTCAGCTGACTTGAAGTGCCTCAAAGACCACCTCTGCCAGT  
 TCTGTGAAGAGAAACACCACTCCACTGGGGCAGCACCACAGCAGGGATGACTTCCACTCGAGTCAAGC  
 CCATGTCTGCACCTAGCCGCTTCTTGGGGCTCTTCTGTGGACAAGAAGCCCACTTCCACTAAGCCTAG  
 CTCTCTGCTCCCAGGTGAGCCGCTGGCCACAACCTGTTTCTGCCCTGACCTGAAGAGTGTTCGCTCC  
 AAGGTCGGCTCTACAGAAAACATCAAACACCAGCCTGGAGGAGCCGGGCCAAAAGTAGAGAAAAACAG  
 AGGCAGCTACCACAGCTGGGAAGCCTGAACCTAATGCAGTCACTAAAGCAGCCGGCTCCATTGCGAGTGC  
 ACAGAAACCGCCTGCTGGGAAAGTCCAGATAGTATCAAAAAAGTGAAGTACAGCCATATCAATCCAAG  
 TGTGGTCCAAGGACAATATTAAGCATGTCCTGGAGGTGGCAATGTTTCAAGTTCAGAACAAGAAAGTGG  
 ACATATCCAAGTCTCCTCAAGTGTGGTCCAAAGCTAATATCAAGCACAAGCCTGGTGGAGGAGATGT  
 CAAGATGAAAGTCAGAAGTTGAACTTCAAGGAGAAGGCCAAAGTGGGATCCCTTGATAACCTGTG  
 GGCCACTTGCCTGCAGGAGGTGCCGTGAAGGTAAGTGAAGGCGGTGGCAGTGAAGGCTTCCGTTGCCAG  
 GCCCCCCGCTGGGAGGAGCCAGTATCCCTGAGGCTGCGCTGACGCTGGCGCCCTACTTCAGCCAG  
 TGGCCTCAGTGGCCACACCACCTGTCAGGGGGTGGTACCAAAGGGAGCCACAGCCTGGACAGCCAG  
 ATCCAGGAGACAAAT

ACGCGTACGCGGCCGCTCGAGCAGAAACTCATCTCAGAAGAGGATCTGGCAGCAATGATATCCTGGATT  
 ACAAGGATGACGACGATAAGGTTTAA

Protein Sequence:

>MR211666 representing NM\_008633  
 Red=Cloning site Green=Tags(s)

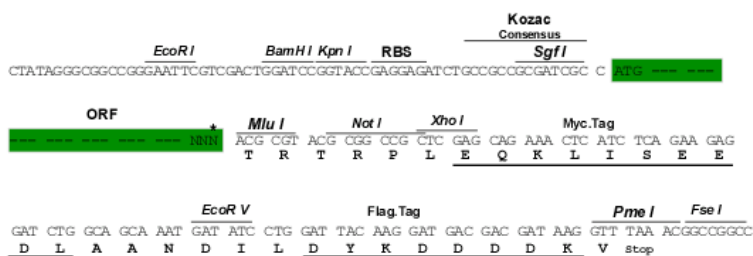
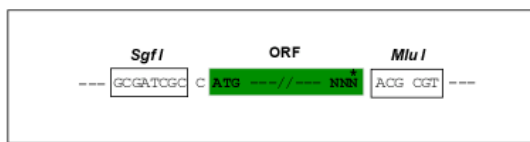
MADLSLVDALTEPPPEIEGEIKRDFMAALEAEPYDDIVGETVEKTEFIPLLDGDEKTGNSESKKKPCLDT  
 SQVEGIPSSKPTLLANGDHGMEGNNTAGSPTDFLEERVDYQDYQSSQNPEDASFQFPQQVLDTDQAEF  
 FNEHRDDGLADLLFVSSGPTNASAFTERDNPSSEDSYGMPCDSFASTAVVSQEWVSGAPNSPCSESCVSP  
 EVTIETLQPATELSKAAEVESVKEQLPAKALETMAEQTTDVVHSPSTDTTPGPDTEAALAKDIEEITKPD  
 VILANVTQPSTESDMFLAQDMELLTGTEAAHANNIILPTEPDESSTKDVAPPMEEEIVPGNDTTSPKETE  
 TTLPIKMDLAPPEDVLLTKETELAPAKGMVSLSEIEEALAKNDESSAIPVAQETVVSETEVVLATEVVL  
 PSDPITTLTKDVTLPLEAERPLVDMTPSLETETLTKETAPPTETNLGMAKDMSPLESEVTLGKDVI  
 LPETKVAEFNNVPLSEEEVTSVKDMSPSAETEAPLAKNADLHSGTELIVDNSMAPASDLALPLETKVAT  
 VPIKDKGTVQTEKPREDSQLASMQHKGQSTVPPCTASPEPVKAAEQMSTLPIDAPSLENLEQKETPGS  
 QPSEPCSGVSRQEEAKAAVGVGTGNDITTPPNKEPPPSPEKKAKPLATTQPAKTSTSKAKTQPTSLPKQPA  
 PTTSGGLNKKPMSLASGSVPAAPHKRPAATATARPSTLPARDVKPKPITEAKVAEKRTSPSKPSSAPAL  
 KPGPKTTPTVSKATSPSTLVSTGPPSSRSPATTLPKRPTSITKTEGKPADVKRMTAKSASADLSRSKTTAS  
 SVKRNTPTGAAPPAGMTSTRVKPMSAPSRSSGALSVDKKTSTKPSSSAPRVSRLLATTVSAPDLKSVRS  
 KVGSTENIKHQPGGGRKVEKKTEAATTAGKPEPNAVTKAAGSIAAQAQPPAGKVQIVSKKVSYSHIQSK  
 CGSKDNIKHPGGGNVQIQNKKVDISKVSSKCGSKANIKHKPGGGDVKIESQKLNFKKAQAKVGSLDNV  
 GHLPAAGAVKVTTEGGSEALPCPGPPAGEEPIPEAAPDAGAPTSASGLSGHTTLLSGGGDQREPQLDSQ  
 IQETN

TRTRPLEQKLISEEDLAANDILDYKDDDDKV

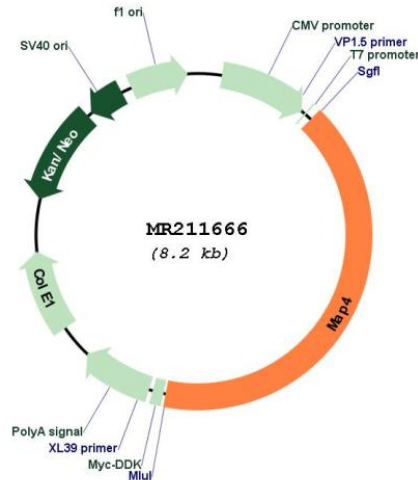
Restriction Sites: SgfI-MluI

Cloning Scheme:

Cloning sites used for ORF Shuttling:



\* The last codon before the Stop codon of the ORF

**Plasmid Map:**


**ACCN:** NM\_008633

**ORF Size:** 3375 bp

**OTI Disclaimer:** The molecular sequence of this clone aligns with the gene accession number as a point of reference only. However, individual transcript sequences of the same gene can differ through naturally occurring variations (e.g. polymorphisms), each with its own valid existence. This clone is substantially in agreement with the reference, but a complete review of all prevailing variants is recommended prior to use. [More info](#)

**OTI Annotation:** This clone was engineered to express the complete ORF with an expression tag. Expression varies depending on the nature of the gene.

**Components:** The ORF clone is ion-exchange column purified and shipped in a 2D barcoded Matrix tube containing 10ug of transfection-ready, dried plasmid DNA (reconstitute with 100 ul of water).

**Reconstitution Method:**

1. Centrifuge at 5,000xg for 5min.
2. Carefully open the tube and add 100ul of sterile water to dissolve the DNA.
3. Close the tube and incubate for 10 minutes at room temperature.
4. Briefly vortex the tube and then do a quick spin (less than 5000xg) to concentrate the liquid at the bottom.
5. Store the suspended plasmid at -20°C. The DNA is stable for at least one year from date of shipping when stored at -20°C.

**RefSeq:** [NM\\_008633.4](#)

**RefSeq Size:** 5681 bp

**RefSeq ORF:** 3378 bp

**Locus ID:** 17758

**UniProt ID:** [P27546](#)

**Cytogenetics:** 9 59.83 cM

**MW:** 117.9 kDa

**Gene Summary:** Non-neuronal microtubule-associated protein. Promotes microtubule assembly.  
[UniProtKB/Swiss-Prot Function]