

Product datasheet for MR211616L4

Pdgfra (NM_001083316) Mouse Tagged Lenti ORF Clone

Product data:

Product Type:	Expression Plasmids
Product Name:	Pdgfra (NM_001083316) Mouse Tagged Lenti ORF Clone
Tag:	mGFP
Symbol:	Pdgfra
Synonyms:	A115593; CD140; CD140a; Pdgfr; Pdgfr-2
Mammalian Cell Selection:	Puromycin
Vector:	pLenti-C-mGFP-P2A-Puro (PS100093)
E. coli Selection:	Chloramphenicol (34 ug/mL)
ORF Nucleotide Sequence:	The ORF insert of this clone is exactly the same as(MR211616).
Restriction Sites:	SgfI-MluI
Cloning Scheme:	

Cloning sites used for ORF Shuttling:



* The last codon before the Stop codon of the ORF.

ACCN:	NM_001083316
ORF Size:	3267 bp



[View online »](#)

OTI Disclaimer: Due to the inherent nature of this plasmid, standard methods to replicate additional amounts of DNA in E. coli are highly likely to result in mutations and/or rearrangements. Therefore, OriGene does not guarantee the capability to replicate this plasmid DNA. Additional amounts of DNA can be purchased from OriGene with batch-specific, full-sequence verification at a reduced cost. Please contact our customer care team at custsupport@origene.com or by calling 301.340.3188 option 3 for pricing and delivery.

The molecular sequence of this clone aligns with the gene accession number as a point of reference only. However, individual transcript sequences of the same gene can differ through naturally occurring variations (e.g. polymorphisms), each with its own valid existence. This clone is substantially in agreement with the reference, but a complete review of all prevailing variants is recommended prior to use. [More info](#)

OTI Annotation: This clone was engineered to express the complete ORF with an expression tag. Expression varies depending on the nature of the gene.

Components: The ORF clone is ion-exchange column purified and shipped in a 2D barcoded Matrix tube containing 10ug of transfection-ready, dried plasmid DNA (reconstitute with 100 ul of water).

Reconstitution Method:

1. Centrifuge at 5,000xg for 5min.
2. Carefully open the tube and add 100ul of sterile water to dissolve the DNA.
3. Close the tube and incubate for 10 minutes at room temperature.
4. Briefly vortex the tube and then do a quick spin (less than 5000xg) to concentrate the liquid at the bottom.
5. Store the suspended plasmid at -20°C. The DNA is stable for at least one year from date of shipping when stored at -20°C.

RefSeq: [NM_001083316.1](#)

RefSeq Size: 6570 bp

RefSeq ORF: 3270 bp

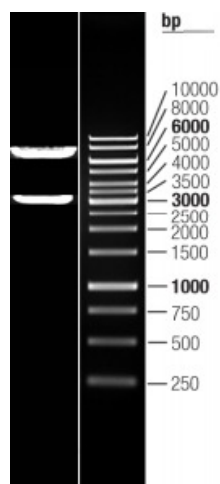
Locus ID: 18595

UniProt ID: [P26618](#)

Cytogenetics: 5 39.55 cM

Gene Summary: This gene encodes a member of the receptor tyrosine kinase family of proteins. Binding of platelet-derived growth factor protein ligands to this receptor triggers receptor dimerization and autophosphorylation, resulting in the activation of several downstream signaling pathways. Signaling through the encoded receptor plays a role in gastrulation and the development of nearly all organ systems. Mice lacking a functional copy of this gene reportedly exhibit defects in lung, skeleton, testis and the central nervous system, and die soon after birth. Alternative splicing and intronic polyadenylation of gene transcripts have been implicated in muscle regeneration and fibrosis in adult mice. [provided by RefSeq, Jan 2017]

Product images:



Double digestion of MR211616L4 using SgfI and MluI