

Product datasheet for **MR211573**

BC068157 (BC068157) Mouse Tagged ORF Clone

Product data:

Product Type: Expression Plasmids
 Product Name: BC068157 (BC068157) Mouse Tagged ORF Clone
 Tag: Myc-DDK
 Symbol: BC068157
 Vector: pCMV6-Entry (PS100001)
 E. coli Selection: Kanamycin (25 ug/mL)
 Cell Selection: Neomycin
 ORF Nucleotide Sequence: >MR211573 representing BC068157
 Red=Cloning site Blue=ORF Green=Tags(s)

TTTTGTAATACGACTCACTATAGGGCGGCCGGAATTCGTCGACTGGATCCGGTACCGAGGAGATCTGCC
 GCC**CGATCGCC**

ATGGACAAGAGGGATAGCGTCAAATCAGGAACTGCCCGCGAATGCCGTCTTCACGACCCCTGGCCTTC
 TGACCCCTAGGCCTCCTTCTGGGTCCGCTCGACCTCCTCCCTGTGACCACTGCTGCCCTTCGAGTCTT
 GGAAGCAAACGGAGCTATGGGGCGAAGGTCCTGGTGGAGCGAGCCCAAGCGCTGCAAAAGCCGCTCTT
 CCACAGACCAGCAAAGCCGCTCTCCACAGACCAGCAAAGCCGCTCTCCACAGACCAGCAAAGCAGCTC
 TTCCACAGACCAGCAAAGCAGCTCTCCACAGACCACTATTACGGGGCACCAGCGCAGTGTGGGGC
 AGGTCTCGTAGCCAGCCAACAGGCCCCAGCTTCTGGGAAAGGAGAGAGGGCCCTATGAAGACCCCT
 GGCCAGGGCTCTATTTCTAGCCCGGGCTGCCAGCAGTGGGATTGCCAGACCAGGCCCTGTTGTCCAGA
 AGAGACTCCAACCTCCGACTAAGGAACCTCGGCCAGAGGTAACACCAGAGACGCCAAAAGGAATAC
 TCTGAACCTGGAACACGAAGAGTTTTGTCTGCAGATTCTTAGGGCCACCTCAGGAGCCCTCCCT
 GCCATCACCCGTCGGTCCAGGGCTCCAGCTACAGAGTGGGACTTCTCAACCAGCTCCCAGTCCAGAC
 AGCGTCTCTGACCACCGAGGCAGCCAGGAACTGGGAGCAGTCTTCTGAACCCAGTCCACGGAGCT
 GAGCCAGCCTTAGGAGACGCTCTGTTGCTGGTGGCAGCTGCAAAAGCCGGTCTCACGTTCCCTGATC
 CCCAGTGTACTCCTCAGCTCTCCCATCCCGCTCCGGGGTCTACCACGTGTAACCCACGGGCTCCTG
 CGCATACCTCGCAGCTCAAGTCGAAAGGGCAGCAAGCTCTGCACCAACCCAGACCACAGTCCCAAGGAA
 GAACAAGCCCTGTACAGAGCCTGATTCTGTTCATCTTAGTCACGCCCACTCCACCTGGTGTCTCC
 TCTGTCCAGGGCCAGATGATCCCTCGCAAACCACTTCTCCCTCCTCCACCACTCCGCCTTTT
 CTCTGCAGAACCTCCCTCTACACCAGCCACACCCCAATTGCTAGCTCCACCCACATCTCTGGATACTGA
 AGAGGCCCTGACTCACCCACCGAGAGCTGTAATCTCTTATCGCCCCCTCCCTTATACAGAATATG
 CCCCTAACAGGCTTCTCAGCAACGCTCCCTCAGGAGACTCTCGGCCATGCCTTTACCTACCTGCTC
 CTCTATCTTAGCCTCGTCTCTCCACAACCTCTTCTCCCGCAATTTCCCGCAGAATTTGCCAC
 TTCCCTGTACAGTCTTCTCAGTTGCTCTCTCACTCCTTTCCGGGCCAACTTTTCTGAGTCTCTCC
 CTTCCCGGGCCAGCTCGCTAATCGAACCAGCCGCTTTGCAAGATCTCTGTTTCTGGCCATTTCTC
 CTCCAGTTTCTCGTCTACCTCCATCTCACCACTCTGCCTACCTTCCGTTGGTACGCTCTCTGAG
 GCTCCCACTTTCTCAGACTTTGCCCACTCACAGGCTCTTTGTTGACCTTGCCGCCCTCACTGGCTCC



[View online »](#)

TCACCCAGCCGGCCACGCCTCCTCTTTGGCCTTGTCCTCTATCCACCAACTCTCTACTGGCTCGC
 CCTTTTGAGGCCTCTCCTTCTTTCTTGCTACCCCCCTATGCAGCCACGCGCTCTACCTCGCCTTC
 TTTGCAGGCACCTCCTGTTACATACCCCTTGCTCTTTCTCACCCCTGCCTACCCACCTCTGCCCGCT
 CTTCTCTCCCCTCCTGCCTACCTCCTCTGGAGAGCCCTTTTCTCCCTCAGCCTCACCTCGTCTCCCT
 TAGCAACTCCCCCTCCAGAAGCCCCACCTTCACTGGGCTACCCACTCTTACCCTGGCCACGCCCC
 TCCGAAAACCCACCTCTGGCTTTTCCCCTCTGCCAGTTCCACCTCTCCCTGGACACAGCCACATGT
 TTTCCACAGGCTCTCTTTGGCTTTGCCTCCTCTACAAACCTCTCCTTCTCCTCTGACAATACCCTGTC
 CGCAGACTCCACCTTCTCTGGCCTTGCCTCCCTGCAGTCTCCCTCCTCCCATTGGCCACAGCCACCC
 CCCCTACAGATTCCCCTTGTTGTTTTACTACTTTACAGACCCCTCCTTCTCCCCTGACCACTTTCCCT
 CCGGGGCTCCCGCTGGCCTGACCTCGCCGTTGTTACGCTCCTTCTCCTCCTGCCTACCCACTAC
 AAGCCCCCTCGTCGACCCCAACCCCGGTTCCAGATGTCCCTATCACAGTCCACGGCTGACCCTGGCGT
 GGCCCTGCCCGCCCCGCCCTCGCGAAGCCGTCAGTACGCTGAGTGGCCCGGACCTGGCAGGT
 CACAGCAGTAGTCCACGAGCACACCAGAGGAGTCCGCGCTACGATAGTGGCCCGAGGGCTGTCTA
 CAATCTCCCCGGCCCGGACGCGGACCTAGCTGCCTGCCACCCGCTTCTGGAGTGAAGTTCTGTCTC
 ACAGTTAGCAGTACGACACTCCAGGAGTTCCCCTGCCATGGCCTCCCCTGCTGGCCAGGTTCTCT
 GATGGCCTGTGCACCATCTACGAATCTGAAGACCAGAGTCTGGTGGCCCCACCCGGGATCCCTAGATG
 TGGAGCCAGAACCAATGCCTGGCTCTGGCAGTGCAGAGGTGACTGCTGCAGACTGTGCAGGAGCATCCTC
 AAGAAGCCAAAGTCCGCTCGCCTTGGCAGCTGCCCTGGGGCCCTTACGGCGAGCGTTGTGCAGCAC
 CTGCTAAGCCGGACACTGCTGCTAGCAGCTGCAGAAGGTGCAGCTGTGGGCTGCGAAGGCAGTTCAGGAG
 GCTCAGGGGTGGTGGTGTCTCGGGAGGATCCCGGCTCCGCTTAGCGATGTGAATTGGCCGCTGGGC
 CGAATTGCTGTCTCCTTGGACGAGTCTCGTCCAGCATCACTTCGGTACCAGCTTCTCCCAGATGAT
 GTGGCTCCCCACAGGTGACTGGACTGTGGTGAAGTGGAGACTTTTCAT

ACGCGTACGCGCGCCTCGAGCAGAACTCATCTCAGAAGAGGATCTGGCAGCAAATGATATCCTGGATT
 ACAAGGATGACGACGATAAGGTTTAA

Protein Sequence:

>MR211573 representing BC068157
 Red=Cloning site Green=Tags(s)

MDKRDSVKSQTAPRMPSSRPPGLLTPRPPSGSARPPPVTTAALRVLEANGAMGRRSLVERAPGVCKAAL
 PQTSKAALPQTSKAALPQTSKAALPQTTIHGAPARSAGAGPRSPANRPPASGKGERAPMKTP
 GGQSISSPGRASSGIARPGPVVQKRLQPPTKEPSARGKTPETPKRNTLNSGTRRVL SADS LGP TSGAPSP
 AITRRSRAPATEVGLPQPAPSARQRPLTTEAARKPGSSASEPSATELSPAFRRRSVAGGSLQKPVSRSLI
 PSATPQLSPSRSGVSPRVTPRAPAHTSQLKSKGQALHPTQTTVPRKNKPSVQSLIPASSLVTPPPGAS
 SVQGPDDPSQTTLPPSPPTTPLLQNL PSTPATPPLLAPPTSLDTEEASDPPPRAVISSPPLIQNM
 PPNQASSATLPQETLSAMPFSPAPLSLASSPQLLPSPI SPQNLPTSLVTSSQLPLSTPFRANFSESP
 LPRATLANRTTSLQDPLFLAISPPVSSSTISIPPLTSSVVTPLRLPLSQTLP TQSALLTLPPSLAS
 SPQPATPPPLALSPLSTQLSTGSPSLQASPSFLPTPPMQPRALPSPSLQAPPVTYPLPLSPPASPLPA
 LLSPPASPPLESPLSPSASPSSPLATPPPEAPPSLGSPTLSPLATPPPQTPLAFPLPASTSSLDTATC
 FPQGPLLALPPLQTSPLTIPCPQTTPSLALPSLQSPSSPLATATPPLQIPLVVLPTLQTPPSPLTTFP
 PGVPPGLTSPVVQPPSPASPPLQAPRRPPTPGPDVPI TGPRLLALAPAPPPPSRSPSSLSGPDLAG
 HSSSATSTPEELRGYDSGPEGCPTISPADADLAACHPASWSRSAPQLAVRSTPGVPLPWPTAGPGSS
 DGLCTIYESEGPESVAPTPGSLDVEPEPMPGSGSAKVTAADCAGASSRSPKSARLGELPLGALQASVVQH
 LLSRTLLAAAEGAAGVCEGSSGGSGVGGVSGSRAPLSDAELGRWAELLSPLDESASITSVTSFSPDD
 VASPQGDWTVVEVETFH

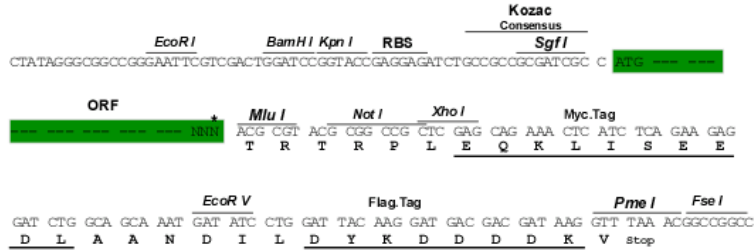
TRTRPLEQKLI SEEDLAANDILDYKDDDDKV

Restriction Sites:

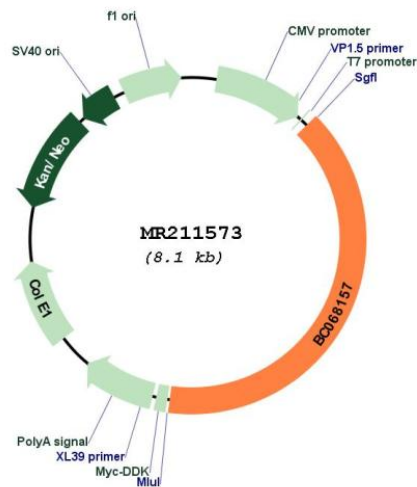
Sgfl-MluI

Cloning Scheme:

Cloning sites used for ORF Shuttling:



* The last codon before the Stop codon of the ORF

Plasmid Map:

ACCN: BC068157

ORF Size: 3201 bp

OTI Disclaimer: The molecular sequence of this clone aligns with the gene accession number as a point of reference only. However, individual transcript sequences of the same gene can differ through naturally occurring variations (e.g. polymorphisms), each with its own valid existence. This clone is substantially in agreement with the reference, but a complete review of all prevailing variants is recommended prior to use. [More info](#)

OTI Annotation:	This clone was engineered to express the complete ORF with an expression tag. Expression varies depending on the nature of the gene.
Components:	The ORF clone is ion-exchange column purified and shipped in a 2D barcoded Matrix tube containing 10ug of transfection-ready, dried plasmid DNA (reconstitute with 100 ul of water).
Reconstitution Method:	<ol style="list-style-type: none">1. Centrifuge at 5,000xg for 5min.2. Carefully open the tube and add 100ul of sterile water to dissolve the DNA.3. Close the tube and incubate for 10 minutes at room temperature.4. Briefly vortex the tube and then do a quick spin (less than 5000xg) to concentrate the liquid at the bottom.5. Store the suspended plasmid at -20°C. The DNA is stable for at least one year from date of shipping when stored at -20°C.
RefSeq:	BC068157.1
RefSeq Size:	4564 bp
RefSeq ORF:	3203 bp
Locus ID:	73072
Cytogenetics:	8 A1.1
MW:	167.3 kDa