

Product datasheet for MR211505

Rbm26 (BC066051) Mouse Tagged ORF Clone

Product data:

| | |
|---------------------------|--|
| Product Type: | Expression Plasmids |
| Product Name: | Rbm26 (BC066051) Mouse Tagged ORF Clone |
| Tag: | Myc-DDK |
| Symbol: | Rbm26 |
| Synonyms: | Se70-2, Pro1777 |
| Mammalian Cell Selection: | Neomycin |
| Vector: | pCMV6-Entry (PS100001) |
| E. coli Selection: | Kanamycin (25 ug/mL) |
| ORF Nucleotide Sequence: | >MR211505 representing BC066051 Red=Cloning site Blue=ORF Green=Tags(s) |

TTTTGTAATACGACTCACTATAGGGCGGCCGGAATTCGTCGACTGGATCCGGTACCGAGGAGATCTGCCGCCCGCATCGCC

ATGGTTTCTAAGATGATCATCGAAACTTCGAGGCGCTCAAGTCTGGCTCAGCAAGACCCTCGAGCCCA
TCTGTGATGCAGATCCATCAGCCCTAGCAAATATGTTTTGGCTCTGGTAAAGAAAGACAAAAGTAAAA
AGAATTAAGGCGTTATGCATTGATCAGCTTGATGATTTCTTCAGAAAGAGACAAAATATTTGTTGAA
AACTTTTTGATGCTGTGAATACAAAGAGTTATCTACCTCCAGAGCAGCCATCGTCAGGAAGCCTGA
AGGTAGACTTTCTCAGCACCAAGAAAAAGATATAAAAAAGAAGAGCTCAGAAAGGAGGAGAGCGAGA
GAAGAAGTTTCCAGAAGGTTGAATCACAGCCCTCCCAAGTCAAGCTCCCGATACAGAGATAATAGAAGC
CGTGATGAGAGGAAAAAGATGATCGTTCTCGAAAAAGAGATTATGATCGAAACCCTCCTCGAAGAGATT
CATATAGAGACCGGTATAACAGAAGGCGAGGGAGAAAGTCCGAGTTACAGCAGGAGTCAAGTCAAGCTG
GAGTAAAGAGAGGCTTCGTGACAGGGATAGAGATAGGAGCAGAACGAGGAGCAGAAAGCAGGACGCGGAGC
AGGAAAGGACCTGGTGAACCTAAATATGACCTGGATAGAACAGATCCGTTAGAAAATAATTATACAC
CAGTTTCTCAGTATCTAATATTTATCTGCGCCACTATCTGTACCTACTTTGAGCAGCACCATTACCGT
CATTGCTCCTACTCATCACGGTAATAACACTACCGAAAGTTGGTCTGAATTTATGAAGACCAGGTGGAT
CACAACCTTATGTAAGGCCACCAATGCCAAAGAAACGGTGTAGAGATTATGATGAAAAGGGGTTCTGTA
TGAGAGGAGACATGTGTCTTTGATCATGGAAGCGACCCAGTAGTTGTAGAAGATGTGAATCTGCCAGG
CATGCTGCCTTTCCAGCTCAGCCACCTGTTGTTGAAGGACCACCTCCTCCCGGGCTGCCTCCACCTCCT
CCGATCCTTACACCGCCACCTGTGAATCTTAGACCCCTGTGCCACCTCCCGGTCCATTACCACCCAGTC
TGCCACCTGTACAGGACCTCCTCCTCACTTCTCCTTTGCAGCCGTCTGGCATGGATGCGCCACCTAA
CTCTGCGACCAGCTCTGTCCCTACTGTAGTAACAACCTGGCATTTCATCACCAGCCTCCTCTGCTCCACCC
TCTCTTTACTGCAGTTTTTTGTTACCAGATACATACGATACAGATGGCTACAATCCTGAAGCCCCAA
GCATAACAAACACTTCCAGACCTATGTATAGACACAGAGTCCATGCACAAAGGCCAACTTGATAGGACT
AACATCAGGTGACATGGATTTACCACCCAGAGAAAAGCCTCCTAATAAAGCAGTATGAGGATAGTAGTG



[View online »](#)

GATTTCAGAATCCAGAAAAAGAACTATTGGGTCTGGGGAACCTGGAGTTTCTACAAAGAAGACATGGTTTG
 ATAAACCAAAATTTAATAGGACAAAACAGCCAGGTTTCCAGAAGAAGGTTTCAGTTTGGAAATGAAAATAC
 TAAACTTGAACCTCGGAAGGTTCCCTCCAGAATTAATAACATCAGCAAACCAATGAACATTTTAGTCGA
 TTTGGAACATTGGTTAACTTACAGGTTGCCTATAATGGTGATCCTGAAGGTGCCCTTATTCAATTCGCAA
 CTTATGAAGAAGCAAAGAAAGCAATCTCAAGTACAGAAGCAGTGTTAAATAATCGTTTTATTAAGGTTTA
 TTGGCACAGAGAAGGAACTACTCAGCAGTTACAACTACTCCACAAAGGTAATACAGCCTTTAGTCCAG
 CAGCCCATTTTACCTGTTGTGAAGCAGTCAGTCAAAGAGCGGCTGGGTCCTGTACCATCAGCTACAACAG
 AGCCAGCAGAAGCCAGAGTGCTACTTCCAGAACTTCCCCAGAATGTAACATAAGTTATCTGTGAAGGACAG
 GTTGGGTTTTGTATCAAAGCCATCTGTTTCAGCAACTGAAAAGGTGTTGTCTACATCTACTGGTCTCACA
 AAAACGGTGTATAATCCAGCTGCTTTGAAGGCTGCACAGAAAACCTTATCAGTTTCTACCCTGCAGTTG
 ATAATAATGAAGCACAGAAAAGAAACAGGAGGCACTGAACTTCCAGCAGGATGTAAAGAAAAGGAAGCA
 AGAAATTTAGAAAAGCACATTGAAACACAGAAGATGCTAATTTCAAACCTAGAGAAAAACAAAACCATG
 AAGTCTGAAGATAAAGCAGAAATAATGAAAACATTGGAGATTTTGACAAAAAATATTACCAAGTAAAAG
 ATGAGGTTAAATCTACATCTCCTGGACGCTGTCTCCAAAAGTATAAAAACAAAGACTCAGATGCAGAA
 AGAATTGCTTGACACAGAATTGGATTTATATAAGAAGATGCAGGCTGGAGAAGAAGTCACTGAACCTAGG
 AGAAAATATACAGAATTACAGCTGGAAGCTGCTAAAAGAGGAATCTTTTCATCTGGCCGAGGTAGAGGAA
 TTCATACAAGAGGTGAGGTACAGCTCACGGCCGGGCGAGGGGTAGAGGCCGAGGCCGAGGTGTGCCTGG
 GCATGCTGTAGTGGATCACCGACCCGAGCACTGGAGATTTCTGCATTTACAGAGAGTGATAGAGAAGAT
 CTTCTTCTCATTTTGCACAATATGGGGAAATTGAGGACTGTCAGATTGATGACGCTTCACTCCATGCAA
 TAATCACATTCAAGACAAGAGCAGAAGCAGAAGCAGCTGCAATTCACGGCGCTCGCTTCAAAGGGCAGGA
 TTTGAAGCTGGCTGGAACAAACCAATAGCTAACATGTCAGCTGTGGACTGAAGAAGCTGAACCTGAT
 GAAGAGGAAGTAGGTTTTTTTTTTTTTTTCACTTGTTTCCCATCATTATTCATAGTTCTTTTATAAAAG
 GTGATTTTCTTTTAAATGGCTGTGATTTAACATAAATCTTTTATTCTAAACCATATTCAGACAGGGG
 AGATCAGATAAATGCAGACAACCTATATTTTCTGGAT

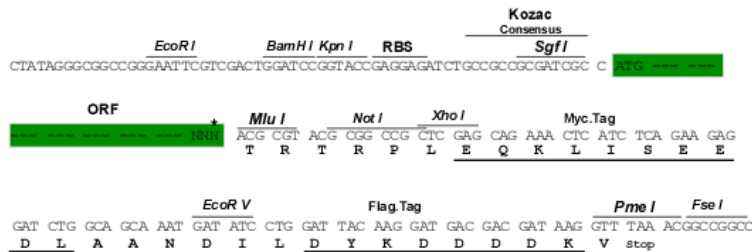
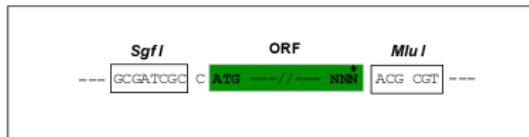
ACGCGTACGCGGCCGCTCGAGCAGAACTCATCTCAGAAGAGGATCTGGCAGCAATGATATCCTGGATT
 ACAAGGATGACGACGATAAGGTTTAA

Restriction Sites:

SgfI-MluI

Cloning Scheme:

Cloning sites used for ORF Shuttling:



* The last codon before the Stop codon of the ORF

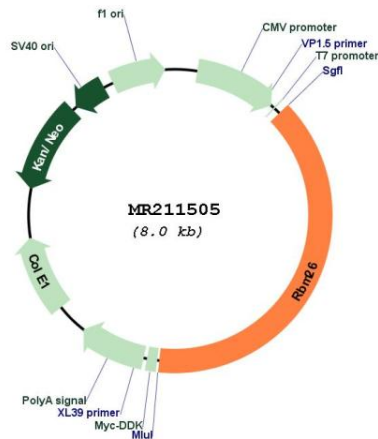
ACCN:

BC066051

ORF Size:

3117 bp

| | |
|-------------------------------|---|
| OTI Disclaimer: | The molecular sequence of this clone aligns with the gene accession number as a point of reference only. However, individual transcript sequences of the same gene can differ through naturally occurring variations (e.g. polymorphisms), each with its own valid existence. This clone is substantially in agreement with the reference, but a complete review of all prevailing variants is recommended prior to use. More info |
| OTI Annotation: | This clone was engineered to express the complete ORF with an expression tag. Expression varies depending on the nature of the gene. |
| Components: | The ORF clone is ion-exchange column purified and shipped in a 2D barcoded Matrix tube containing 10ug of transfection-ready, dried plasmid DNA (reconstitute with 100 ul of water). |
| Reconstitution Method: | <ol style="list-style-type: none"> 1. Centrifuge at 5,000xg for 5min. 2. Carefully open the tube and add 100ul of sterile water to dissolve the DNA. 3. Close the tube and incubate for 10 minutes at room temperature. 4. Briefly vortex the tube and then do a quick spin (less than 5000xg) to concentrate the liquid at the bottom. 5. Store the suspended plasmid at -20°C. The DNA is stable for at least one year from date of shipping when stored at -20°C. |
| RefSeq: | BC066051 |
| RefSeq Size: | 4221 bp |
| RefSeq ORF: | 3119 bp |
| Locus ID: | 74213 |
| Cytogenetics: | 14 E2.3 |
| MW: | 154.8 kDa |

Product images:


Circular map for MR211505