

Product datasheet for MR211446

Plekha7 (BC084587) Mouse Tagged ORF Clone

Product data:

Product Type:	Expression Plasmids
Product Name:	Plekha7 (BC084587) Mouse Tagged ORF Clone
Tag:	Myc-DDK
Symbol:	Plekha7
Synonyms:	A430081P20Rik; AI414265
Mammalian Cell Selection:	Neomycin
Vector:	pCMV6-Entry (PS100001)
E. coli Selection:	Kanamycin (25 ug/mL)
ORF Nucleotide Sequence:	>MR211446 representing BC084587 Red=Cloning site Blue=ORF Green=Tags(s)

TTTTGTAATACGACTCACTATAGGGCGGCCGGAATTCGTCGACTGGATCCGGTACCGAGGAGATCTGCC
GCC**CGATCGCC**

ATGTCTGAAGCCAGAGAGAAACCAAGACCGTCCAGCATGGTCAGTGAGACATCCACAGCTGGGACCAGT
CCACCCTGGAGGCCAAGCCTGGACCCAAGATTGTCAAGTCCAGCAGTAAAGTGCACAGCTTCGGGAAGAG
GGACCAGGCCATTCGGAGGAACCTTAATGTTCCGGTGGTGGTGGGGCTGGCTACACAAGCAGGACAGC
TCCGGGATGAGGCTGTGAAAAGACGCTGGTTTGTGCTGGCTGATTACTGCTGTTTTATTATAAGACA
GCCGAGAGGAAGCTGTTCTCGGAGCATCCCTCTGCCAGCTATGTCATCTCCCCAGTGGCCCCAGAGGA
TCGAATAAGCCGCAAGTATTCTTTAAGGCTGTGCATACGGGATGAGGGCACTCATCTACAGCACCACC
ACAGCGGGCTCTCAGATGGAGCACTCGGGCATGAGGACCTACTACTTCAGTGCCGACACCCTGGAGGACA
TGAACGCCTGGGTGAGGGCCATGAACCAGGCTGCGCAGGTGCTGTCTCGCTCATCGTGAGGAGGGACGT
GGACAAGGTGGAGCGGCAGGCCATGCCACAGGCCAACCACACTGACGCCTGCCAAGAATGTGGCCACGTG
GGACCTGGGCACTCGAGAGACTGTCTCGTGGAGGCTATGAGGACTCCTATGGCTTCAACAGGAGGGAGC
AGGAGGAGGAACGCTTCCGTGCTCAAAGAGACCCACTGGAGGGCAGGAGGGACAGGAGCAAGGCCAGGTC
CCCATACTTGCCAGCTGAGGAGGATGCCTTGTGTCGATCTACCTGGTGGGCCCGAGGCCAGCAAGCA
CAGCCACAGCGAGCCGAGAAGAACGGGGTCCACCTTATGGCCTGGGAGAACAAGAATGGGACCAATGGGT
ACCAGCGACTGTCTCTCCAGGGCCAACCCAGAAAAACACAGCCAGAGGAAGACCGGCCTGGCCCCAGGC
AGAGCACTGGACAAAAGCTCAGAAGGGGACGGCAGGAGCTTGCCTTAGACCAAACACTTCTCGCCAG
GGTCCCAGCCAGCCCCTGTCTTCCCGAAAACCTACCAGAGTCTTCCCAAGAGCACTAGACATCTTCTG
GGAGCTCGTACCCCCTCCCGGAACCTGCCAGCGACTACAAGTACGCACAGGACCGAGCCAGCCACCT
GAAGATGTCCAGTGAAGAGCGCCGGGCACACAGAGACGGCACTGTGTGGCAGCTCTATGAGTGGCAGCAG
AGGCAGCAGTTCGTACGGCAGCCCCACCGACCCATAGGAGCTGGCTCCCCAGAGTTCACCGAGCAGG
GTCGACGCGGAGCCTGCTGGAGGTGCCCGCTCCATCTCGTGCCTCCGTCTCCTTCTGACATCCCTCC
TCCTGGGCTCCAAGGCCCTTTCGCCCGGGCGCCACATACACCAGCAGAAAGGTCACAGTGAAGCCA



[View online »](#)

```

CCCAGCAGAGGAGGAGTGTGGACATCTCTCTGGGGGTCTCCAGGAAGGCACGGGGTCATGCTGCCA
AGAACTCTCTCACGTGGACCGGCTTCCATGCCCTCCATGGGCTACATGACCCATACAGTGAGCGCTCC
CAGCTTACATGGAAAATCGGCTGATGACACCTACCTCCAGCTGAAGAAGGACCTGGAGTATCTGGATCTG
AAGATGACAGGCCGAGACCTTCTTAAAGATCGAAGTCTGAAGCCCATGAAGATCGCCGAGAGTGACATTG
ATGTCAAGCTGAGCATCTTCTGTGAGCAAGACAGGATACTCCAGGACTTGAAGACAAGATCCGAGCTCT
CAAGGAGAATAAAGATCAGCTAGAATCCGTGCTGGAGGTGCTGCACAGGCAGACAGAAGTACCCGAGC
CAGCCACAGCACCTGGAGAAGTCACTTGCCAGCAGAGGCTCCTGCAGGAGGACCTCGTCCACATCCGTG
CGGAGCTCTGCAGAGAGTCCACGGAGATGGAAAATGCATGGAACGAGTACCTGAAGCTGGAGAAGGATGT
GGAGCAGCTAAAGCAGACCCTGCAGGAGCAACACAGGAGAGCCTTTTTTTTCCAGGAGAAGTCTCAGATA
CAGAAGGATCTGTGGAGGATCGAAGATGTCATGGCAGGCCTGAGTGCGAATAAAGAGAACTACAGAGTCC
TGGTGGGATCTGTCAAAAATCCAGAAAGAAAAACGGTGCCTTTGTTCCCTCACCCATCTGTGCCTTCACT
CTCTCCAAGTGCAGCAAGCCGGCCCTGCAGCCAGCCCTCCACCAGCCCCGTGCGGACGCCTCTGGAG
GTCCGACTCTTCCGAGCTGCAGACCTATGTGCCATACCGACCTCACCCGCCAGCTGAGGAAAGTGA
TGTCTCCTCTGCAGTACCAACCAAGGCAAGCCCTCAGGCGGAAGACGAGGCACCTCCAGGCCACCACT
TCCTGAACTCTACAGCCAGAGGACCAGCCCCAGCTGTGCCACCACTGCCGAGAGAAGCCACCATCATT
CGGCACACATCTGTGCGTGGACTCAAACGACAGTCGGATGAGAGGAAGAGGGACCGGAGCAGGGCCAGT
GTGTGAATGGGGACTTGAAGGTGGAGCTCCGGTCTACGTGAGTGAGCCAGAGCTGGCCAGCCCTCAGTGG
GGACGTGCCTCAGCCCTCCTTGAGCCTCGTGGGCTCTGAGAGCAGGTACCAGACGCTGCCAGGCAGAGGG
CTCTCAGGCTCCACGTCCAGGCTCCAGCAGTCTCCACCATTGCTCCCTATGTCACACTCCGGAGGGGGC
TGAATGCCGAAAACAGCAGTGCACCTTCTTAGACCCAAAGAGTGCCTTGGAGCGTCTGTACTCGGGGA
CCACCAGCGGGCAAGATGAGTGCAGGAAACAGCTGGAGCGGATGAAGCGGCACCAGAAGGCTCTGGTC
CGAGAGCGCAAGAGGACCCTGAGCCAAGGAGAAAAGACGGGTCTGCTCTCAGCCCGATACCTCAGCCAGC
CACTGCCAGGAGATCTCGGCTCAGTATGT

```

ACGCGTACGCGGGCCGCTCGAGCAGAAACTCATCTCAGAAGAGGATCTGGCAGCAAATGATATCCTGGATT
ACAAGGATGACGACGATAAGGTTTAA

Protein Sequence:

>MR211446 representing BC084587
Red=Cloning site Green=Tags(s)

```

MSKPERNQRPSSMVSETSTAGTTSTLEAKPGPKIVKSSSKVHSFGKRDQAIRRNLNVPVVVRGWLHKQDS
SGMRLWKRWFVFLADYCLFYKDSREEAVLGSIPLPSYVISPVAPEDRISRKYSEKAVHTGMRALIYSTT
TAGSQMEHSGMRTYYFSADTLEDMNAWVRAMNQAAQVLSRSSLRDVKVERQAMPQANHTDACQECGHV
GPGHSRDCPRRGYEDSYGFNRREQEERFRAQRDPLEGRDRSKARSPYLPAAEDALFVDLPGGPRGQQA
QPQRAEKNVPPYGLGEQNGTNGYQRTAPPRANPEKHSQRKTGLAQAEHWTKAQKGDGRSLPLDQTLPRQ
GPSQPLSFPENYQSLPKSTRHL SGSSSPPRNLPSDYKYAQDRASHLKMSEERRAHRDGTVWQLYEWQQ
RQQFRHGSPTAPIGAGSPEFTEQGRSRLLEVPRISVPPSPSDIPPPGPPRPFPPRRPHTPAERVTVKP
PEQRRSVDISLGGSPRKARGHAAKNSSHVDRRSMPSMGYMTHTVSAPSLHGKSADDTYLQLKKDLEYLDL
KMTGRDLLKDRSLKPMKIAESDIDVKLSIFCEQDRILQDLEDKIRALKENKQDLESVLEVLHRQTEQYRD
QPQHLEKITCQQRLLQEDLVHIRAELCRESTEMENAWNEYLKLKEDVEQLKQTLQEQHRAFFFFQEKSQI
QKDLWRIEDVMAGLSANKENYRVLVGSVKNPERKTVPLFPHSPVPSLSPTESKPALQPSPTSPVRTPLE
VRLFPQLQTYVYRPHPPQLRKVMSPLQSPTKAKPQAEDEAPPRPPLPEL YSPEDQPPAVPPLPREATII
RHTSVRGLKRQSDERKRDREQQCQVNGDLKVELRSYVSEPELASLSGDVPQPSLSLVGSESRYSYQTLPRG
LSGSTSRLQQSSTIAPYVTLRRLNAENSSATFSRPKSALERLYSGDHQRGKMSAEQLERMKRHQKALV
RERKRTL SQGEKTGLLSARYLSQPLPGDLGSVC

```

TRTRPLEQKLISEEDLAANDILDYKDDDDKV

Chromatograms:

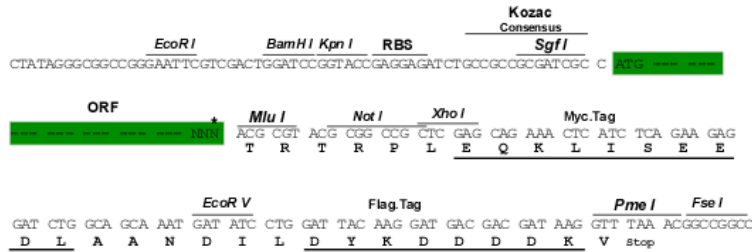
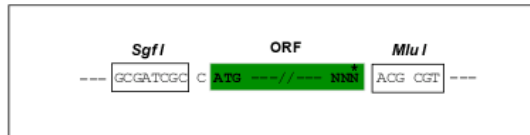
https://cdn.origene.com/chromatograms/mm9036_d07.zip

Restriction Sites:

SgfI-MluI

Cloning Scheme:

Cloning sites used for ORF Shuttling:



* The last codon before the Stop codon of the ORF

ACCN: BC084587

ORF Size: 3039 bp

OTI Disclaimer: The molecular sequence of this clone aligns with the gene accession number as a point of reference only. However, individual transcript sequences of the same gene can differ through naturally occurring variations (e.g. polymorphisms), each with its own valid existence. This clone is substantially in agreement with the reference, but a complete review of all prevailing variants is recommended prior to use. [More info](#)

OTI Annotation: This clone was engineered to express the complete ORF with an expression tag. Expression varies depending on the nature of the gene.

Components: The ORF clone is ion-exchange column purified and shipped in a 2D barcoded Matrix tube containing 10ug of transfection-ready, dried plasmid DNA (reconstitute with 100 ul of water).

Reconstitution Method:

1. Centrifuge at 5,000xg for 5min.
2. Carefully open the tube and add 100ul of sterile water to dissolve the DNA.
3. Close the tube and incubate for 10 minutes at room temperature.
4. Briefly vortex the tube and then do a quick spin (less than 5000xg) to concentrate the liquid at the bottom.
5. Store the suspended plasmid at -20°C. The DNA is stable for at least one year from date of shipping when stored at -20°C.

RefSeq: [BC084587.1](#)

RefSeq Size: 4537 bp

RefSeq ORF: 3041 bp

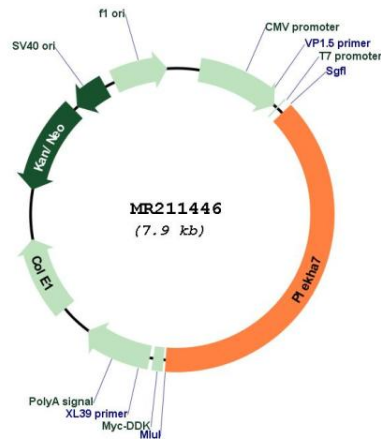
Locus ID: 233765

Cytogenetics: 7 F1

MW: 166.3 kDa

Gene Summary: Required for zonula adherens biogenesis and maintenance. Acts via its interaction with KIAA1543/Nezha, which anchors microtubules at their minus-ends to zonula adherens, leading to the recruitment of KIFC3 kinesin to the junctional site (By similarity).
[UniProtKB/Swiss-Prot Function]

Product images:



Circular map for MR211446