

Product datasheet for **MR211375**

Slitrk3 (NM_198864) Mouse Tagged ORF Clone

Product data:

Product Type:	Expression Plasmids
Product Name:	Slitrk3 (NM_198864) Mouse Tagged ORF Clone
Tag:	Myc-DDK
Symbol:	Slitrk3
Synonyms:	ST3
Mammalian Cell Selection:	Neomycin
Vector:	pCMV6-Entry (PS100001)
E. coli Selection:	Kanamycin (25 ug/mL)



[View online »](#)

ORF Nucleotide Sequence:

>MR211375 representing NM_198864
 Red=Cloning site Blue=ORF Green=Tags(s)

TTTTGTAATACGACTCACTATAGGGCGGCCGGGAATTCGTCGACTGGATCCGGTACCGAGGAGATCTGCC
 GCC**CGCATCGCC**

ATGATGAAGCCAAGCATAGCTGAAATGCTTACAGAGGAAGAATGCTGTGGATAATCTTCTAAGCACAA
 TTGCTCTAGGATGGACTACCCCAATCCCTGATAGAGGACTCAGAAGAAATAGATGAGCCCTGTTTTGA
 TCCATGCTACTGCGAAGTTAAAGAAAGCCTCTTTCACATACATTGTGACAGCAAGGGATTACAAACATT
 AGTCAGATTACTGAGTCTGGTCAAGACCTTTTAACTGTATCTTCAGAGGAATTCGATGAGAAGACTAT
 ACACAAACAGTTTTCTCACTTGAATAATGCGGTGCCATTAACCTTGGGAACAATGCATTGCAGGACAT
 TCAAACCTGGAGCATTTAATGGCCTAAGATTTTAAAGAGACTGTATCTCCATGAGAACAACCTAGATGTC
 TTCAGAAATGACACCTTCTGGCTTAGAAAGTCTGGAATATCTTCAGGCAGATTACAATGTCATTAAC
 GTATAGAGAGTGGGCATTTCCGAACCTAAGTAAATTGAGGGTCTAATCTTAAATGATAATCTCATCCC
 CGTGCTTCCAACCAATTTATTTAAAGCTGTTTCCCTAACGCATCTGGACCTTCGTGGGAACAGGTTAAAG
 GTTCTCTTCTACCGTGGGATGCTGGATCACATTGGCAGAAGCCTGATGGAGCTCCAGCTAGAAGAGAATC
 CTTGGAACGTACCTGTGAGATAGTACAGCTGAAGAGTTGGCTGGAGCGAATACCTTACACAGCCCTGGT
 GGGAGACATTACCTGTGAGACACCTTCCATTTCCATGGGAAGGATCTCCGTGAAATCAAGAAGACTGAA
 CTCTGTCCACTGTTGCTGACTCTGAGGTGGAGGCCAGTCTGGGGATTCCCCTTATCTTCAAGCAAGG
 AGAATGCCTGGCCAATAAACCTTCTCTATGTTGCTTCTGTCCATTTACTGCTTCATCTGTTGAATA
 TAAGTCTCTAATAAGCAACCAAAACCCACCAACAGCCAGAACACCGAGACCCTTCGACATCCCGAG
 GCTTTATATCTGGTCCAATCAACCTCTATTGCCCTTATCAGACTAGACCACCCATCCCATTATAT
 GCTCTACTGGGTGACATGCAATTTGCATACATGACCTTGGCTTACTGTCACACTGCAAGAAAGAGG
 ATTTAACAAACATCTCTGAACCTCTTCAAGGCCCTTGAATGCCAAGAAGCTGTACCTGAGCAGCAATCTT
 ATTCAGAAGATATACCGCTCTGATTTTTGGAATTTTTCTTCTTTGGATCTCTTGACCTAGGGAACAATC
 GCATTTCTACGTCCAGGATGGGGCTTTCATCAACCTGCCAACCTGAAGAGTCTCTTTCTCAATGGCAA
 TGATATAGAAAAGCTGACTCCAGGTATGTTCCGAGGTCTGCAGAGCTTGCATTACTTGTACTTCAATTC
 AACGTCATCCGGGAAATCCAACCTGCAGCCTTCAGCCTCATGCCAACCTGAAGTGCTATTTCTCAACA
 ATAACCTGCTGAGGACTCTGCCAATGATGCCTTTCAGGTACATCCCTGGCTCGGCTCACTTGAGGAA
 GAACTACTTTCTCTACCTGCCAGTGGCTGGTGTCTTGAACACCTGAATGCCATTGTGCAGATAGATCTC
 AACGAGAACTCTTGGGACTGCATTGCGACTTAGTCCCCTTAAAGCAGTGGATCGAAACCATCAGCTCAG
 TCAGCGTGGTAGGTGATGACTCTGTAGGACCCCGAGAACCTCACCCACCGTGTGTGCGCACTATTGA
 GCTGGAAGTTTTATGCCAGAGATGCTGCATATTGCCAACCTGGACCATCTCCACCCAGCCTGGAGAT
 TACCACCTAACGGGGGACCAACAAGTGCATCACCTTATGAGTCTCTCCCCAGGGGGCCCTGTGCCAC
 TTTCTGTGTTGATTTCTAGCCTCTTGGTCTGTTCTTCTCAGCTGTCTTTGTTGCTGCAGGCCTCTTTGC
 CTATGTGCTCCGTCCGGCTAGGAAGAAGTTGCCCTTATAAGCAAGAGACAAGAAGGTGTGGACCTTACA
 GGAATCCAGATGCAATGTACCGGCTGTTTGGAGACAGTGGAGGCAACAGTGGTGGGAGTGGAGTGGAG
 GCGCACAACCTCTGTCTCGCCAGAGAAAGCCCTCCCGTGGGTACGTGTACGAGTATATACCCCAACC
 AGTAACTCAGATGTGTAACAACCCCATCTATAAGCCTCGAGAGGAGGAAGAAGTGGCTGCCAGCC
 CAGGACACAGGAGCTACAGACCGTGGAGTCTTGGTACACAACCAACAGGAATGGCTGAGGTGCTTTGG
 GAAGTGAGCAGTTTGCAGAAACCCCAAGGAGAACCACAGTAACTACAGGACCTTGTGAAAAAGAGAA
 GGAGTGGGCTCTGGCTGTTTCCAACCTCAACTTAACACCATAGTGACGGTGAACCATCACCAACCTCAC
 CCTCACCACTCGGCAGTTGGTGGGTTTTCAGGGTGGTGGAGGACTGGGGGAGACTTGGCTGGTTCC
 GCCACCATGAGAAGAATGGTGGGTTGGTGTGTTTCCCCTGGGGGAGGTTGGTGGTGGCAGTCTGCT
 ACTAGACCGTGGAGGCCACAGCCTGCTCCGTGCACAGTGGGATTTGTGGACTGTCTCTATGGCACAGT
 CCCAAATTAAGGAACTCCATGTCCACCCCTGGCATGCAATATCCAGACTTACAGCAGGATGCCAGGC
 TCAAAGAAACCTTCTTCTCAGCTGGAAAGGCTTACAGACCACCAACCCCAAAAGTATTACCT
 CGACTTAAGGCCAAACTTCAAACCTAAGCCGATTACCTCGAAGTCTGGAGAAAACAGCATACAGTTC

ACGCGTACGCGGCCGCTCGAGCAGAAACTCATCTCAGAAGAGGATCTGGCAGCAAATGATATCCTGGATT
 ACAAGGATGACGACGATAAGGTTTAA

Protein Sequence: >MR211375 representing NM_198864
 Red=Cloning site Green=Tags(s)

MMKPSIAEMLHRGRMLWILLSTIALGWTTPIPLIEDSEEIDPCFDPCYCEVKESLFHIIHCDSKGFNTI
 SQITFEWSRPFKLYLQRNSMRRLYTNSFLHLNNAVSINLGNALQDIQTGAFNGLKILKRLYLHENKLDV
 FRNDTFLGLESLEYLQADYNVIKRIESGAFRNL SKLRVLILNDNLIPVLPNTLFAVSLTHLDRGNRLK
 VLFYRGLMDHIGRSLMELQLEENPWNTCEIVQLKSWLERIPYALVGDITCETPFHFHGKDLREIKKTE
 LCPLLDSEVEASLGIPHLSSSKENAWPTKPSSMLSSVHFTASSVEYKSSNKQPKPTQPRTPRPPSTSQ
 ALYPGNQPPPIAPYQTRPPPIIICPTGCTCNLHINDLGLTVNCKERGFNNISELLPRPLNAKKLYLSSNL
 IQKIYRSDFWNFSSDLLHLGNRISYVQDGAFINLPNLKSLFLNGNDIEKLTGPMFRGLQSLHYLYFEF
 NVIREIQPAAFSLMPNLKLLFLNNLLRTLPTDAFAGTSLARLNL RKNYFLYLPVAGVLEHLNAIVQIDL
 NENPWDCTCDLVPFKQWIETISSVSVGDVLCRTPENLTHRDVRTIELEVLCP EMLHIAQPGSPPPQPGD
 YHPNGGPTSASPYEFSPPGGPVPLSVLILSLLVLFSAVFAAGLFAYVLR RRRRKKLPFRSKRQEGVDLT
 GIQMQRHLRFEDSGGNSGGSGGGGRPTLSPEKAPPVGHVVEYIPHPVTQMCNNPIYKPREEEVAAASAA
 QDTGATDRGGPGTQPTGMAEVLLGSEQFAETPKENHSNYRTLLEKEKEWALAVSNSQLNTIVTVNHHHPH
 PHHSAVGGVSGVGGGTGGDLAGFRHHEKNGGVVLFPPGGGCGGGSLLLDRERPQPAPCTVGFVDCLYGTV
 PKLKELHVHPPGMQY PDLQDARLKETLLFSAGKFTDHQTPKSDYLDLRAKLQTKPDYLEVLEKTAYRF

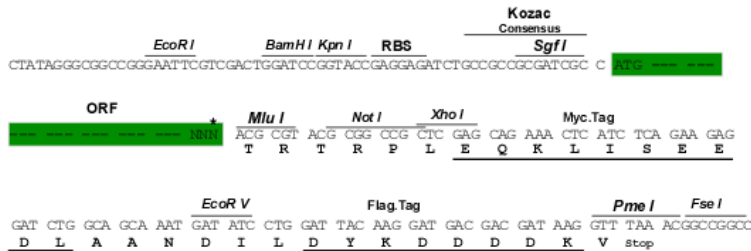
TRTRPLEQKLISEEDLAANDILDYKDDDDKV

Chromatograms: https://cdn.origene.com/chromatograms/mm9012_c02.zip

Restriction Sites: SgfI-MluI

Cloning Scheme:

Cloning sites used for ORF Shuttling:



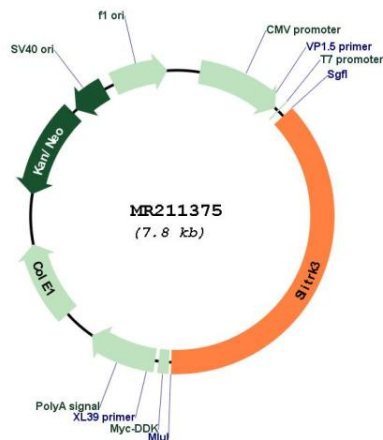
* The last codon before the Stop codon of the ORF

ACCN: NM_198864

ORF Size: 2940 bp

- OTI Disclaimer:** The molecular sequence of this clone aligns with the gene accession number as a point of reference only. However, individual transcript sequences of the same gene can differ through naturally occurring variations (e.g. polymorphisms), each with its own valid existence. This clone is substantially in agreement with the reference, but a complete review of all prevailing variants is recommended prior to use. [More info](#)
- OTI Annotation:** This clone was engineered to express the complete ORF with an expression tag. Expression varies depending on the nature of the gene.
- Components:** The ORF clone is ion-exchange column purified and shipped in a 2D barcoded Matrix tube containing 10ug of transfection-ready, dried plasmid DNA (reconstitute with 100 ul of water).
- Reconstitution Method:**
1. Centrifuge at 5,000xg for 5min.
 2. Carefully open the tube and add 100ul of sterile water to dissolve the DNA.
 3. Close the tube and incubate for 10 minutes at room temperature.
 4. Briefly vortex the tube and then do a quick spin (less than 5000xg) to concentrate the liquid at the bottom.
 5. Store the suspended plasmid at -20°C. The DNA is stable for at least one year from date of shipping when stored at -20°C.
- RefSeq:** [NM_198864.3](#)
- RefSeq Size:** 3751 bp
- RefSeq ORF:** 2943 bp
- Locus ID:** 386750
- UniProt ID:** [Q810B9](#)
- Cytogenetics:** 3 E3
- MW:** 109.9 kDa
- Gene Summary:** Suppresses neurite outgrowth.[UniProtKB/Swiss-Prot Function]

Product images:



Circular map for MR211375