

Product datasheet for **MR211370**

Grik5 (NM_008168) Mouse Tagged ORF Clone

Product data:

Product Type:	Expression Plasmids
Product Name:	Grik5 (NM_008168) Mouse Tagged ORF Clone
Tag:	Myc-DDK
Symbol:	Grik5
Synonyms:	GluK5; GluRgamma2; KA2
Mammalian Cell Selection:	Neomycin
Vector:	pCMV6-Entry (PS100001)
E. coli Selection:	Kanamycin (25 ug/mL)



[View online »](#)

ORF Nucleotide Sequence:

>MR211370 representing NM_008168
 Red=Cloning site Blue=ORF Green=Tags(s)

TTTTGTAATACGACTCACTATAGGGCGGCCGGGAATTCGTCGACTGGATCCGGTACCGAGGAGATCTGCC
 GCC**CGGATCGCC**

ATGCCGGCTGAGCTGCTGCTGCTGATAGTCGCCTTCGCCAATCCCAGCTGCCAGGTGCTGTCATCAC
 TGCATGCGTCAATCCTGGACGACCAGACCGTGTGGCCGTGGTGAAGTCTGGCCCTGGCCCTGGC
 CCGAGAGCAGATCAATGGGATCATCGAGGTCCCAGCCAAGGCCAGAGTGAAGTAGACATCTTTGAGCTG
 CAGCGGGACAGCCAGTACGAGACCACGGACACCATGTGTGATCCTGCCAAGGGGTTGTATCTGTCT
 TGGGACCTCCTCCAGCCAGCTTCTGCCTCCACCGTGAAGCCATATCTGTGGGAGAAGGAGATCCCCA
 CATCAAGTGGTCTGAGGAGACGCCCGCTTCAGTACCTTCGCTTCGCATCTGTGAGCTGTACCCC
 AGTAATGAAGATGTCAGCCTGGCAGTCTCCGAATCCTCAAGTCTTTAACTACCCCTCAGTAGCCTCA
 TCTGCGCAAGGCTGAGTGCCTGCTGCGGTAGAAGAACTGGTGCAGGCTTCTCATCTCCAAGGAGAC
 ACTGTCCGTGAGGATGCTTGTGACAGCCGGGACCCACGCCGCTACTCAAGGAGATCCGAGATGACAAA
 GTGTCCACCATCATCATTGATGCCAATCGTCCATCTCCACCTTGTCTCCGTAAGGCTTCGGAGCTGG
 GAATGACCTCAGCGTTTACAAGTACATCCTCACCACCATGGACTTTCCATCCTGCATCTGGATGGTAT
 CGTGGAGGACTCCTCAACATCCTGGGCTTTCCATGTTCAACACCTCCCACCCCTTCTACCCAGAGTTT
 GTGCGCAGCCTCAACATGCTCCTGGAGGGAGAAGTGAAGCCAGCACCTATCCTGGCCCTGCGCTGCCG
 CAGCCCTGATGTTTGACGCTGTGCACGTGGTGGTAAGCGCTGTCCGAGAAGTGAACCGAAGCCAGGAGAT
 TGGCGTCAAGCCACTGGCCTGCCTTCGGCCAACATTTGGCCCATGGGACCAGCCTTATGAAGTACCTT
 CGAATGGTAGAGTATGACGGGCTGACCGGGCGGTTGAGTTCAACAGCAAAGGGCAGAGGACCAACTACA
 CACTACGCATCCTGGAGAAGTCCCGCCAGGGCCACCGTGAAGTGGGTTGTTACTCTAACCGGACCT
 GGCCATGAATGCCACCACCTGGACATCAACTGTGACAGACTTAGCCAACAAGACTCTGGTGGTCAACA
 ACTATCCTGGAGAACCCTGATGTTATGCGCCGGCCCAACTTCCAGGCCTTGTGAGGAATGAGCGCTTCG
 AGGGCTTCTGCGTGGACATGCTCAGGGAGCTGGCCGAGCTGCTGCGCTTCCGATACCGCCTGCGGTTGGT
 AGAGGACGGACTACCGGGCACCTGAGCCCAACGGTTCCTGGACAGGCATGGTTGGAGAAGTCAACAC
 CGGAAGGCAGACCTGGCTGTGGCAGCCTTACCATCACCGCCGAGAGGGAGAAGTCACTGACTTCTCCA
 AGCCCTTATGACCTGGGGATCAGCATCCTCTACAGGTGCACATGGGCCGCAAGCCTGGCTACTTCTC
 CTTCTGGACCCCTTCTCCCTGCGGTGGCTTTCATGCTTCTGCCTACCTGGCTGTCAGTGTGTC
 TTGTTCTGGCTGCCAGGCTGAGCCCTTATGAGTGGTACAACCCACACCCGTGTCTCCGGCGCGTCCCC
 ATATCCTGGAGAACCAGTACACGCTGGGCAACAGCCTCTGGTTCCTCCGTTGGTGGCTTATGAGCAGGG
 CTCGGAGATCATGCCCGGGCACTGTCCACACGCTGTGTGAGCGGAGTCTGGTGGGCCTTCACTTGATC
 ATCATCTCCTCTACACGGCCAACCTGGCTGCCTTCTCACGGTGCAGCGCATGGAGGTGCCGTTGGAGT
 CGGCTGACGACCTGGCGGATCAGACCAACATTGAGTACGGCACTATCCACGCTGGCTCCACCATGACCTT
 CTTCCAGAAGTCCGCGTACCAGAGTACCAGCGGATGTGGAATACATGCAATCGAAGCAGCCAGCGTG
 TTTGTCAAGAGCACAGAGGAGGAATCGCCCGCTCCTCAACTCCCGCTATGCCTCCTGCTGGAGTCCA
 CCATGAACGAGTACCACAGGCGCCTCAATTGCAACCTCACCCAGATCGGGGGCTCCTCGACCAAGGG
 CTACGGCATCGGCATGCCGCTGGCTCCCTTTCCGGATGAGATCACACTGGCCATCCTGCAGCTCCAG
 GAGAACAACAGGCTGGAGATCCTGAAGCGCAAGTGGTGGGAGGGCGCCGTTGCCCAAGGAGAGGACC
 ACAGGGCCAAAGTTTGGCATGGAGAACATTGGCGCATTTTTTGTGCTGCTGATCTGTGCCTCATCAT
 TGCTGTCTTCTGGCGGTGATGGAGTTCATCTGGTCCACGCGGAGGTGAGCGGAGTCCGAGGAGGTGTCG
 GTGTGCCAGGAGATGCTGCAGGAGTACGCCACCGGTGTCTTGGCGAAAGACCTCGGTTCCCGCCGGC
 GCCGGCGCCTGGTGGCCGAGCCGGCCCTGCTGTCGCTGCGCGCAGTCCGCGAGATGCGACTCAGCAA
 CGGCAAGCTCTACTCGCCGGCGCGGGCGGGACGCGGGCGCGCAGGGGTCGCGAGCCTCCTGGAC
 GACCCCGACCTCCTGGGGACCCGGCCAGGCTCCCACGCCCTGCACGCAGTGCAGCTGTCGAGTGTCCAGG
 AGTGCAGGCGCATCCAGGCGTGCAGCTTCCGGGGCGGGCGCCCCACGTTGGCTGGGACCCACG
 CGAAGCCACCAGCCGCTCGGCCGCGGCCAGGCCCCACCGACCCCGAGCTGACCGAGCACGAA

ACGCGTACGCGGCCGCTCGAGCAGAAACTCATCTCAGAAGAGGATCTGGCAGCAAATGATATCCTGGATT
 ACAAGGATGACGACGATAAGGTTTAA

Protein Sequence: >MR211370 representing NM_008168
 Red=Cloning site Green=Tags(s)

MPAELLLLLIVAFANPSCQVLSLRMAAILDDQTVCGRGERLALALAREQINGIIEVPAKARVEVDIFEL
 QRDSQYETDTMCQILPKGVSVLGPSSPASASTVSHICGEKEIPHIKVGPEETPRLQYLRFAVSLYP
 SNEDVSLAVSRILKSFNYPASLICAKAECLLRLEELVRGFLISKETLSVRMLDDSRDPTLLKEIRDDK
 VSTIIIDANASISHLVLRKASELGMTSAFYKYILTTMDFPILHLDGIVEDSSNILGFSMFNTSHPFYPEF
 VRSLNMSWRENCEASTYGPALSAALMFDVHVVS AVRELNRSQEIGVKPLACTSANIWPHTSLMNYL
 RMVEYDGLTGRVEFNSKQORTNYTLRILEKSRQGHREIGVWYSNRRLAMNATLTDNL SQTLANKTLLVVT
 TILENPYVMRRPNFQALSGNERFEGFCVDMLRELAELLRFYRLRLVEDGLYGAPEPNGSWTGMVGLIN
 RKADLAVA AFTITAEREKVIDFSKPFMTLGISILYRVHMGRKPGYF SFLDPFSPA VWFMLLAYLAVSCV
 LFLAARLSPYEWYNPHPCLRARPHILENQYTLGNLWFPVGGFMQQGSEIMPRALSTRCVSGVWVAFTLI
 IISSTANLAFLTVQRMEVPVESADDLADQTNIEYGTIHAGSTM TFFQNSRYQTYQRMWNYMQSKQPSV
 FVKSTEEGIARVLNSRYAFLLESTMNEYHRRNCNL TQIGLLDTKGYGIGMPLGSPFRDEITLAILQLQ
 ENNRLEILKRKWE GGRCPKEEDHRAKGLGMENIGGIFVVLICGLIIAVFVAVMEFIWSTRRS AESEEV S
 VCQEMQLRHAVSCRKTSR SRRRRRPPGSPRALLSLRAVREMRLSNGKLYSAGAGGDAGAHGGPQRLLD
 DP GPPGPRPQAPT PCTHVRVCQECRRIQALRASGAGAPRGLGTPAEATSPRRPRPGPTPREL TEHE

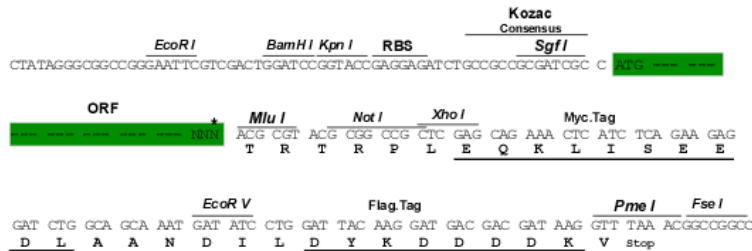
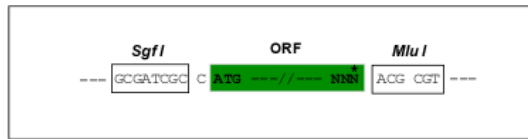
TRTRPLEQKLISEEDLAANDILDYKDDDDKV

Chromatograms: https://cdn.origene.com/chromatograms/mm9012_c03.zip

Restriction Sites: SgfI-MluI

Cloning Scheme:

Cloning sites used for ORF Shuttling:



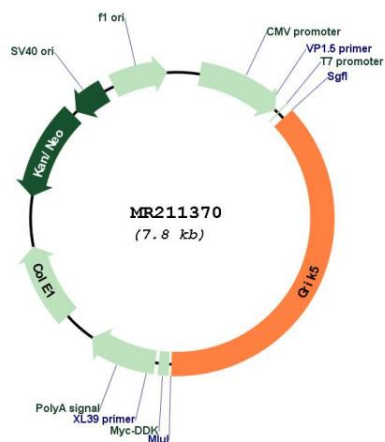
* The last codon before the Stop codon of the ORF

ACCN: NM_008168

ORF Size: 2937 bp

OTI Disclaimer:	The molecular sequence of this clone aligns with the gene accession number as a point of reference only. However, individual transcript sequences of the same gene can differ through naturally occurring variations (e.g. polymorphisms), each with its own valid existence. This clone is substantially in agreement with the reference, but a complete review of all prevailing variants is recommended prior to use. More info
OTI Annotation:	This clone was engineered to express the complete ORF with an expression tag. Expression varies depending on the nature of the gene.
Components:	The ORF clone is ion-exchange column purified and shipped in a 2D barcoded Matrix tube containing 10ug of transfection-ready, dried plasmid DNA (reconstitute with 100 ul of water).
Reconstitution Method:	<ol style="list-style-type: none">1. Centrifuge at 5,000xg for 5min.2. Carefully open the tube and add 100ul of sterile water to dissolve the DNA.3. Close the tube and incubate for 10 minutes at room temperature.4. Briefly vortex the tube and then do a quick spin (less than 5000xg) to concentrate the liquid at the bottom.5. Store the suspended plasmid at -20°C. The DNA is stable for at least one year from date of shipping when stored at -20°C.
RefSeq:	NM_008168.2 , NP_032194.2
RefSeq Size:	3861 bp
RefSeq ORF:	2940 bp
Locus ID:	14809
UniProt ID:	Q61626
Cytogenetics:	7 13.73 cM
MW:	109.7 kDa
Gene Summary:	Receptor for glutamate. L-glutamate acts as an excitatory neurotransmitter at many synapses in the central nervous system. The postsynaptic actions of Glu are mediated by a variety of receptors that are named according to their selective agonists. This receptor binds kainate > quisqualate = glutamate >> AMPA.[UniProtKB/Swiss-Prot Function]

Product images:



Circular map for MR211370