

Product datasheet for **MR211361**

Exoc4 (NM_009148) Mouse Tagged ORF Clone

Product data:

Product Type:	Expression Plasmids
Product Name:	Exoc4 (NM_009148) Mouse Tagged ORF Clone
Tag:	Myc-DDK
Symbol:	Exoc4
Synonyms:	C78892; Sec8; Sec8l1
Mammalian Cell Selection:	Neomycin
Vector:	pCMV6-Entry (PS100001)
E. coli Selection:	Kanamycin (25 ug/mL)



[View online »](#)

ORF Nucleotide Sequence:

>MR211361 representing NM_009148
 Red=Cloning site Blue=ORF Green=Tags(s)

TTTTGTAATACGACTCACTATAGGGCGGCCGGGAATTCGTCGACTGGATCCGGTACCGAGGAGATCTGCC
 GCC**CGCATCGCC**

ATGGCGGCAGAAGCAGCTGGTGGGAAATACAGGAGCACAGTCAGCAAAGCAAAGACCCCTCGGGGCTGC
 TCATCTCGGTGATCAGGACTCTGTCTACCAAGTGTGATGTTGAAGACCGAGAAAATGAGAAAAGGTCGCCT
 TGAAAGAAGCCTATGAGAAGTGTGACCGTACCTGGATGAATTGATCGTTACGACTACACAGAATTGACC
 ACAGCCATTTCGCACATACCAGAGTATCACAGAACGCATCACTAACTCGAGGAATAAAATCAAGCAGGTCA
 AAGAGAATCTGCTTCTGCAAGATGCTGCTGCAATTGCAAACGGGATGAGCTTCGTAAGCTGTGGATTGA
 AGGAATCGAGCATAAGCACGCTCTGAACCTACTGGATGAGATTGAGAACATCAAGCAAGTGCCTCAAAG
 CTGGAACAGTGCATGGCCAGCAAGCACTACCTCAGCGCCACCGACATGCTGGTGCAGCAGTGGAGTCCC
 TGGAGGGTCCACTGCTCCAGGTGGAAGGGCTCAGTGATCTCAGGCTGGAACCTCACAGCAAGAAGATGAA
 CCTGCACTTGGTTCTCATAGAGGAACTGCACCGCCATCTGTATATCAAATCCACTAGCCGGTGGTACAG
 CGTAACAAGGAAAAGGGGAAGATGAGTTCTCATGGCAAAGATCCCTCTCCTGGTCTCTGATTGATGTTT
 CAAACATCCCTACTCCACGCAAATTCCTTGATGCTTCTCAATATTCTGCTGCTGGAGGCTCAAGTGTGAG
 GGAGATGAACCTGCAAGACGTC AAGGAGGACTTGGAGTGTGACCCAGAGGAGAACAGCACTCTTTTCATG
 GGAATCTTATTCAGGGCCTGGCCAGACTGAAGAAGATCCCTGAGACAGTTAAAGCCATTAAGAGCGTC
 TGGAGCAGGAGCTAAAGCAGATTGTGAAGAGGTCAACCACCCAGGTAGCAGACAGTGTATCAGAGGGG
 AGAGAGCCTCACTGTGGACAATCAGCCAAGTTACTCTAGAAGTGTGGAAGTGTGTTGATAAGTTT
 AATGCCGTAGCCACTGCACACTCAGTGGTCTGGGGTACCTCCAGGACTCTGTTGGGACCCAGCTAACAC
 AGCAGGAGGAGATCAAATTAATGACATGGCAGATGTGTGGTGAAGATCCAGGATGTGCTGCAGATGCT
 GTTGACTGAGTACTTGGATATGAAGAACACACGCCACCGCTCAGAGCCATCAGCCCAACTAAGCTATGCC
 AGTACTGGACGAGAGTTCGACGCTTTTTTGGCCAAAGAAGAAACCACAGAGGCCAAAGAATTCCTTTTTCA
 AGTTTGAATCATCCTCCCATGCTATCAGCATGAGCGCCTATCTCCGAGAACAAGAAGGGAGCTCTACAG
 TCGGAGTGGAGAACTCCAGGGAGGTCTGATGACAACCTAATTGAAGGTGGAGGAACAAAATTTGCTGTC
 AAACCTGGAGCCAGAAATATTACCGTCATATCCATCCATTACTGAGATTTATTCAGGAGATTGAACATG
 CCCTGGGACTTGGCCCTGCCAACAGTGTCTCTCGAGAGTTTCTTACCGTGTATATCAAGAGCATCTT
 CCTAATCAGGTCTTGGCTGAGATCAACAAGGAGATTGAAGGCGTCACCAAAACCTCAGACCCTTGAAG
 ATCCTGGCTAATGCAGACACCATGAAGGTTCTGGGAGTGCAGCGCCTCTCTACAGAGCACAATCATCG
 TGGAGAAGACAGTACAAGACCTCATGAACCTTATGCATGACTTGAGTGCCTATTAGATCAGTTCCTCAA
 CATGGTGTGTGAAGCTCCAGGAGTACAAGGACACGTGCTCCACAGCCTACAGGGGCATTGTCCAGTCA
 GAAGAGAACTTGTATCAGTGTCTTGGGCAAAGGATGATGATATCAGCAGACTCTTGAATCGCTGC
 CAAACTGGACTAACATGGCTCAGCCAAACAGCTAAGGCCTAAGAGGGAGGAGGAAGAAGACTTCATAAG
 GGCAGCCTTTGGCAAGGAGTCTGAAGTCTGATTGGAAACCTTGGTGACAAACTCATTCTCCACAAGAC
 ATTCTCCGTGACGTTAGTGACCTCAAAGCCTTGGCCAACATGCACGAAAGCCTGGAATGGCTGGCAGGTC
 GAACAAAGTCAGCTTCTCCAACCTTCTACATCCAGATGCTTCCCTGCTCAAGAGAGCCACGTGAA
 CATGGACCTTCCCCAGTGTCTGAACAGATCATGCAGACACTGAGTGAAGTGGCAAGACCTTCCAGGAC
 ATGGCTGACCGCTGCTTGTCTGCTGCTGATCTGGAAGTGAGAGTTCATTGTTTCCACTATCTCATCCCTC
 TGGCAAAGGAGGGAACTATGCCATCGTTGCCAATGTGGAGAGTATGGATTACGACCCTCTAGTGGTCAA
 GCTCAACAAGACATCAGTGCCATGGAAGAGGCCATGAGCGCCAGCCTCCAGCAACATAAGTTCCAGTAC
 ATCTTTGAAGGTCTGGGACACCTCATCTCTGTATCCTCATTAAATGGGGCCCAATACTTCCGGCGCATCA
 GTGAGTCTGGCATCAAGAAAATGTGTAGGAACATTTTTGTTCTTACGAGAACTTGACCAACATCACCAT
 GTCACGGGAGGCAGACTTGGACTTTCGAAGGCAGTACTACGAGATGCTGTACAACACAGCCGACGAGCTC
 CTGAACCTGGTGGTGGACCAGGGTGTGAAGTACACAGAGCTAGAGTACATCCATGCCCTGACCCTGCTGC
 ACCGAAGCCAGACTGGTGTGGGGACCAGACCACCCAGAACCAGGCTGCAGAGACTCAAGGAGATCAT
 CTGTGAGCAGGCTGCCATCAAGCAAGCCACCAAGGACAAGAAAATAACCCTGTG

ACGCGTACGCGGCCGCTCGAGCAGAAACTCATCTCAGAAGAGGATCTGGCAGCAAATGATATCCTGGATT
 ACAAGGATGACGACGATAAGGTTTAA

Protein Sequence: >MR211361 representing NM_009148
 Red=Cloning site Green=Tags(s)

MAAEAAGGKYRSTVSKSKDPSGLLISVIRTLSTDDVEDRENEKGRLEEAYEKCDRDLDELIVQHYTELT
 TAIRTYQSITERITNSRNKIKQVKENLLSCKMLLHCKRDELRLKWIIEGIEHKHVLNLLDEIENIKQVPQK
 LEQCMASKHYLSATDMLVSAVESLEGPLLQVEGLSDLRLELHKKMNLHLVLEELHRHLYIKSTSRVQ
 RNKEKGKMSHGGKDPSPGPLIDVSNIPTRKFLDASQYSAAGGSSVREMNLQDVKEDLECDPEENSTLFM
 GILIQGLARLKKIPETVKAIKERLEQELKQIVKRSTTQVADSAYQRGESLTVDNQPRLLLELLELFDKF
 NAVATAHSVVLGYLQDSVGTQLTQQEEIKLYDMADVWVKIQDVLQMLLLEYLDMKNTRTASEPSAQLSYA
 STGREFAAFFAKKKPQRPNLSLKFESSHAISMSAYLREQRRELYSRGELQGGPDDNLEGGGTFKVC
 KPGARNITVIFHPLLRFIQEIEHALGLGPAKQCPLREFLTVYIKSIFLNQVLAEINKEIEGVTKTSDPLK
 ILANADTMKVLGVQRPLLQSTIIVEKTVQDLMNLMHDLAYSQDQFLNMVCKLQEKDTCSTAYRGIVQS
 EEKLVISASWAKDDDISRLKSLPNWNTMAQPKQLRPKREEEEDFIRAAFKESEVLIGNLGDKLIPPQD
 ILRDVSDLKALANMHESLEWLAGRTKSAFNLSTSQMLSPAQESHVNDLPPVSEQIMQTLSELAKTFQD
 MADRCLLVHLVVRVHCFHYLIPLAKEGNYAIVANVESMDYDPLVVKLNKDISAMEEAMSASLQQHKFQY
 IFEGLGHLISCILINGAQYFRRISESGIKKMCRNIFVLQQLNTNITMSREADLDFARQYEMLYNTADEL
 LNLVVDQGVKYTELEYIHALTLLHRSQTGVGDQTTQNTLQRLKEICEQAAIKQATKDKKITT

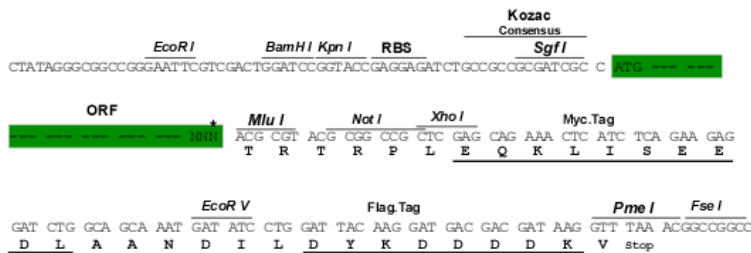
TRTRPLEQKLISEEDLAANDILDYKDDDDKV

Chromatograms: https://cdn.origene.com/chromatograms/mm9089_d03.zip

Restriction Sites: SgfI-MluI

Cloning Scheme:

Cloning sites used for ORF Shuttling:



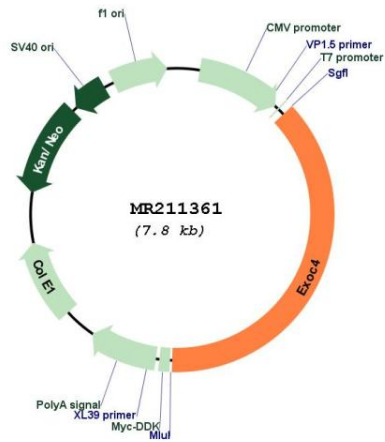
* The last codon before the Stop codon of the ORF

ACCN: NM_009148

ORF Size: 2925 bp

OTI Disclaimer:	The molecular sequence of this clone aligns with the gene accession number as a point of reference only. However, individual transcript sequences of the same gene can differ through naturally occurring variations (e.g. polymorphisms), each with its own valid existence. This clone is substantially in agreement with the reference, but a complete review of all prevailing variants is recommended prior to use. More info
OTI Annotation:	This clone was engineered to express the complete ORF with an expression tag. Expression varies depending on the nature of the gene.
Components:	The ORF clone is ion-exchange column purified and shipped in a 2D barcoded Matrix tube containing 10ug of transfection-ready, dried plasmid DNA (reconstitute with 100 ul of water).
Reconstitution Method:	<ol style="list-style-type: none">1. Centrifuge at 5,000xg for 5min.2. Carefully open the tube and add 100ul of sterile water to dissolve the DNA.3. Close the tube and incubate for 10 minutes at room temperature.4. Briefly vortex the tube and then do a quick spin (less than 5000xg) to concentrate the liquid at the bottom.5. Store the suspended plasmid at -20°C. The DNA is stable for at least one year from date of shipping when stored at -20°C.
RefSeq:	NM_009148.4
RefSeq Size:	3723 bp
RefSeq ORF:	2928 bp
Locus ID:	20336
UniProt ID:	O35382
Cytogenetics:	6 14.59 cM
MW:	110.5 kDa
Gene Summary:	Component of the exocyst complex involved in the docking of exocytic vesicles with fusion sites on the plasma membrane.[UniProtKB/Swiss-Prot Function]

Product images:



Circular map for MR211361