

## Product datasheet for **MR211345**

### **Ppp1r9a (BC053748) Mouse Tagged ORF Clone**

#### **Product data:**

Product Type:	Expression Plasmids
Product Name:	Ppp1r9a (BC053748) Mouse Tagged ORF Clone
Tag:	Myc-DDK
Symbol:	Ppp1r9a
Synonyms:	5330407E15, mKIAA1222, A230094E16Rik
Mammalian Cell Selection:	Neomycin
Vector:	pCMV6-Entry (PS100001)
E. coli Selection:	Kanamycin (25 ug/mL)



[View online »](#)

ORF Nucleotide  
Sequence:

>MR211345 representing BC053748  
 Red=Cloning site Blue=ORF Green=Tags(s)

TTTTGTAATACGACTCACTATAGGGCGGCCGGAATTCGTCGACTGGATCCGGTACCGAGGAGATCTGCC  
 GCC**CGGATCGCC**

ATGTTGAAGGCGGAATCTTCAGGGGAGCGGACCACTCTCAGAAGTGCCTCTCCTCACAGGAATGCGTACA  
 GAACAGAGTTCAGGCACTGAAAAGTACTTTTGACAAACCAAGTCAGATGGGGAACAGAAAACGAAAGA  
 AGGTGAGGGCTCCAGCAGAGCAGAGGTAGAAAGTATGGCTCCAATGTCAACAGAATAAAAATCTATTT  
 ATGCAGATGGGTATGGAACCCAGCGAGAATGCTGCTATCATTGCCAAAACAGGGGGAAAGGTAGGCCCT  
 CGTCCCCTCAGAGAAGAATGAAGCCAAAGAGTTTGTGGAGAAAACGGATGGCTCAGTGGTTAAGTTGGA  
 GTCCTCTGCTCTGAACGAATCAGTAGATTTGACACAATGCATGATGGCCCTTCGTATGCTAAGTTCACG  
 GAGACTCGAAAGATGTTTGAAGAGAGTGTGCATGAGTCAGGGCAAACCATCGCTATCCCAAAGAAAG  
 AGAAAGGTGGAGGACTGAACCACAGGATGAGTGGGTGGCTCCAAGTCCAACAGAGGCAGCAGTGATTC  
 CTTGGACAGCCTGAGCCCCGGACGGAAGCGGTCTCTCCTACTGTGAGTCAGCTGAGTGTGTGTTGAG  
 AACAGTGAGCCTCCAGGTGCTCTCACTTCTGGGAAGGCTGAGAGCGCTGACTACTCGGTGACCGGGCACT  
 ACCCCCTCAATTTACCATCTGTTACCGTCACCAATCTGGATACCTTTGGCCGTCTCAAGGATTCTAATTC  
 GAAGCCTCCATCAAAACAAGATACTGATACAGAGGATGCTCAGAAGAGCGATGCTGTGCCAGTACCG  
 GAAGTGGCTCAGAAAGGTACCTCTTAGCTTCATTGCCTAGTGAAGAGATCCAGCTGAGCACGGAAGCCG  
 AGGACGTCACAACAGCTCAACCAGAGGCTCTGGACAGCACTGATAAAGACAGTCTGAGGAACCTCTGC  
 TGAACCAGGCAATGCCAAAGTCTCATATCCTTTCCCAAGGACGAGCCGTTAGAAGATGCTGAAGCT  
 AATGTGGTTGGGAGTGAGAGAGCTCAGCATCAGAAGAAAGACCTGACAGGTGGTACCTAACCTCCCCTG  
 ATGCTTCTGCATCCAGCTGTGGAAGAGAAGTACCTGAAGACTCAAACAGTTTTTGAAGTCCCACGTATA  
 CATGCATAGTACTATAACGTGTATAGGGTGAGATCCAGGTATAACTCAGACTGGGGAGAGACAGGCACG  
 GAGCAAGATGAGGAGGAAGACAGTGACGAGAACAATTATTACCAGCCTGATATGGAATACTCGGAGATAG  
 TTGGCTTGCCGGAAGAAGAAGAAATCCCAGCAAATAGGAAAATTAAGTTTAGTTGTCTCCGATTAAGGT  
 TTTCAACACATACTCCAATGAAGACTATGACCGGAGAAATGACGACGTTGACCCTGTAGCCGCATCTGCT  
 GAGTATGAGCTTGAAAAGCGAGTAGAAAACCTGGAACCTTTCCAGTGGAAGTGGAGAAAGACGAGGACG  
 GGCTGGCATAAGCATCATTGGAATGGCGTGGTGTGCTGATGCTGGATTGGAGAAGCTGGGGATATTTGT  
 CAAGACAGTACTGACGGAGGTGCTGCTCAGCGGATGGCAGGATTCAAGTCAATGACCAGATTGTGGA  
 GTTGATGGAATCAGCCTGGTGGGGTACACAGAAATTTGCTGCAACCGTTCTGCGGAATACCAAGGGCA  
 ACGTCAGATTCGTTATTGGACGAGAAAAACAGGACAAGTGAAGTGGGTTGCCAGTTGATCAGCCAGAC  
 CCTGGAACAAGAGCGGCGACAGCGGGAGCTTCTGGAGCGTCACTATGCCAGTATGATGCTGACGACGAT  
 GAGACTGGAGAGTATGCCACTGATGAAGAAGAGGATGAGGGCGGGCTATTCTTCTAGTGGTGACGTGG  
 CCATTGAGGTCTTTGAGCTGCCTGAGAAGCAGGACATGTTTTCCCATCTGACCTGGACACAAGCAAGCT  
 CAGCCACAAGTTCAAAGAGTTGCAAAATCAAACATGCAGTTACAGAAGCAGAGATTCAAAAATTGAAGACC  
 AAGCTTCAAGCAGCCGAAAATGAGAAAGTAAGGTGGAACTAGAAAAGAACCAACTGCAACAGAATATAG  
 AAGAGAATAAAGAACGGATGCTGAAGTTGGAGAGCTACTGGATCGAGGCTCAGACATTATGTCATACGGT  
 GAATGAGCATCTCAAAGAGACTCAGAGCCAGTACCAAGCCCTGGAAAAGAAATACAACAAGCAAAGAAG  
 CTGATCAAAGACTTCCAGCAAAAAGAGCTCGATTTTCATCAAGAGACAGGAAGTAGAAAAGAAAGACGGG  
 AGGAGGTGAAAAGGCTCACCTGCTTGAAGTCCAAGCCTGCAAGTTCGATTAGAGATTTGGAGGCTGA  
 GGTGTTGAGACTACTAAAGCAAAATGGGACCCAGGTTAAACAACAACAACATCTTTGAGAGAAGACCA  
 TCTCCCGGGAAGTCTCGAAAGGAGACTATGGAGAATGTGGAAGTCAAGCAAACATCTGTGAGGACG  
 GCTTGAGCAAGACCTGAATGAAGCAGTCCCAGAGACAGAGCGCTGGATTGAAAGCATTGAAAACCCG  
 GGCCAGCTCTCTGTGAAGAACAGGCGCCAGAGGCCACAAGGACACGGCTCTATGACAGCGTCAGTCA  
 ACTGATGGGAGGACAGCCTGGAGAGGAAGGTGAGCACTCTCAATGGCTGGCAGACTCTTGACAGAGTGC  
 GTTGTCCACCAGTATTTATTGAACGTGATAGCGGTTTTACTGATCTGTGCCTACTTGAAGAAAGTC  
 TCCTAAATTTGATTCAATTGCTATATGTTGTCATT

**ACGCGT**ACGCGGCCGCTCGAGCAGAAACTCATCTCAGAAGAGGATCTGGCAGCAAATGATATCCTGGATT  
 ACAAGGATGACGACGATAAGGTTTAA

**Protein Sequence:** >MR211345 representing BC053748  
 Red=Cloning site Green=Tags(s)

MLKAESSGERTTLRSASPHRNAYRTEFQALKSTFDKPKSDGEQKKEGEGSQSRGRKYGSNNVRIKNI  
 LFMQMGMEPSENAIIAKTRGKGRPSSPQRRMKPKFEVVEKTDGVSVKLESSVSERISRFDTMHDG  
 PSYAKFTETRKMFRSVHESGQNHRYSPKKEKGGTEPQDEWGGSKSNRGSDDLSDLSPRTEAVSPT  
 VSQLSAVFNSEPPGALTSGKAESADYSVTGHYPLNLPSVTVTNLDTFGRLKDSNSKPPSNKQD  
 TDTEDAQKSDAVPVEVAQKGTSLASLPSEEIQLSTEADVTTAQPEALDSTDKDSPEEPSAENQAMP  
 KSHILSPRNEPLEDAEANVVGSERAQHQQKDLTGGLTSPDASASSCGREVPEDSNFSFESHVYMH  
 SDYNNVYRVRSRYSNSDWGWTGTEQDEEEDSDENNYYPDMEYSEIVGLPEEEEEIPANRKIKF  
 SCAPIKVFNTYSNEDYDRRNDVDVPAASAEYELEKRVKLELFPVELEKDEDGLGISIIGMGV  
 GADAGLEKLGIFVKVTDGGAAQRDGRIVNDQIVEVDGISLVGVTQNF AATVLRNTKGNVRFV  
 IGREKPGQVSEVAQLISQTLQERRQRELLERHYAQYDADDD ETGEYATDEEEDEGGPILPSG  
 DVAIEVFELPENEDMFSPSDLT SKLSHKFKELQIKHAVTEAEIQKLT KLQAAENEKVRWELE  
 KNLQQNIEENKERMLKLESYWIEAQTLCHTVNEHLKETQSQYQALEKKYNKAKKLIKDFQKQ  
 ELDFIKRQEVERKKREEVEKAHLEVQGLQVRIRDLEAEVFRLLKQNGTQVNNNNNIFERRP  
 SPGEVSKGDTMENVEVKQTSQCDGLSQDLNEAVPETERLDSKALKTRAQLSVKNRRQRPRTR  
 RLYDSVSS TDGEDSLERKVSTLNGWQTLAECRCPPVYLLNVIALLICALLGRKSPKVFVNCY  
 MVVI

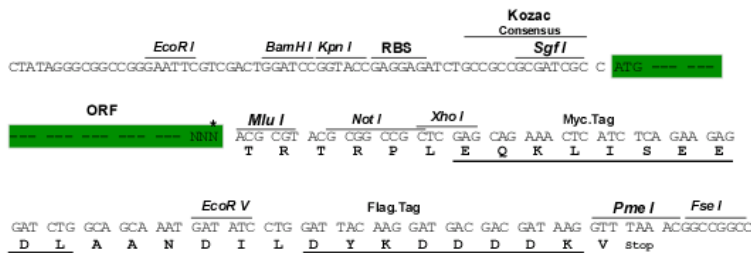
TRTRPLEQKLISEEDLAANDILDYKDDDDKV

**Chromatograms:** [https://cdn.origene.com/chromatograms/mm9038\\_b10.zip](https://cdn.origene.com/chromatograms/mm9038_b10.zip)

**Restriction Sites:** SgfI-MluI

**Cloning Scheme:**

Cloning sites used for ORF Shuttling:



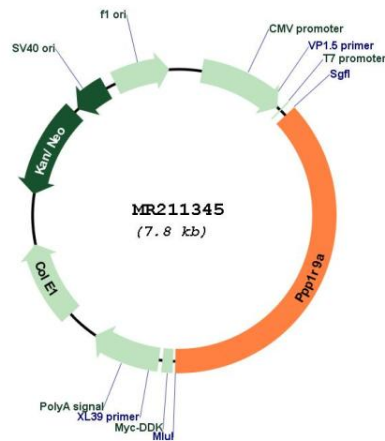
\* The last codon before the Stop codon of the ORF

**ACCN:** BC053748

**ORF Size:** 2907 bp

- OTI Disclaimer:** The molecular sequence of this clone aligns with the gene accession number as a point of reference only. However, individual transcript sequences of the same gene can differ through naturally occurring variations (e.g. polymorphisms), each with its own valid existence. This clone is substantially in agreement with the reference, but a complete review of all prevailing variants is recommended prior to use. [More info](#)
- OTI Annotation:** This clone was engineered to express the complete ORF with an expression tag. Expression varies depending on the nature of the gene.
- Components:** The ORF clone is ion-exchange column purified and shipped in a 2D barcoded Matrix tube containing 10ug of transfection-ready, dried plasmid DNA (reconstitute with 100 ul of water).
- Reconstitution Method:**
1. Centrifuge at 5,000xg for 5min.
  2. Carefully open the tube and add 100ul of sterile water to dissolve the DNA.
  3. Close the tube and incubate for 10 minutes at room temperature.
  4. Briefly vortex the tube and then do a quick spin (less than 5000xg) to concentrate the liquid at the bottom.
  5. Store the suspended plasmid at -20°C. The DNA is stable for at least one year from date of shipping when stored at -20°C.
- RefSeq:** [BC053748.1](#)
- RefSeq Size:** 9473 bp
- RefSeq ORF:** 2909 bp
- Locus ID:** 243725
- Cytogenetics:** 6 1.86 cM
- MW:** 347.3 kDa

**Product images:**



Circular map for MR211345