

Product datasheet for **MR211312**

Ctdp1 (NM_026295) Mouse Tagged ORF Clone

Product data:

Product Type:	Expression Plasmids
Product Name:	Ctdp1 (NM_026295) Mouse Tagged ORF Clone
Tag:	Myc-DDK
Symbol:	Ctdp1
Synonyms:	4930563P03Rik; AW553592
Mammalian Cell Selection:	Neomycin
Vector:	pCMV6-Entry (PS100001)
E. coli Selection:	Kanamycin (25 ug/mL)



[View online »](#)

ORF Nucleotide Sequence:

>MR211312 representing NM_026295
 Red=Cloning site Blue=ORF Green=Tags(s)

TTTTGTAATACGACTCACTATAGGGCGGCCGGGAATTCGTCGACTGGATCCGGTACCGAGGAGATCTGCC
 GCC**CGGATCGCC**

ATGGAAGCGCCGCCCGCGCCGGCTCCCACCGAGTGCCTCCGCGGTGGCCGGGCAGAGGTGCGCT
 GCGCCGGCCACGCGCTGCGTCTGCTGGAGTGAAGGTGGCGCGGGCGACCGTGCATCGGCTC
 GGTGCTGGCAGTGTGCGAAACCGCAGCCTCCGCGCAGCCCGCAGGGCCGGCACCGGCTCGCGCGGCTCT
 GGGGGTGCCTGCGCGCCGCGCGGACCGAGCGCAGGCTCAGGTCGGAGCGCGCGGCGTGGTCCGTGAAC
 TGTGTGCGCAGCCAGGCCAGGTGGTGGCCCTGGAGCACTTCTGGTGAATTGGAAGGATGCAGCCATCC
 TGTTGTCATGAAGGCCCTGTGTGCCGAGTGTGGCCAGGACCTGACCCAGCTGCAGAGTAAAAATGGAAGG
 CAGCAGGTCCCCCTTCCACAGCGACGGTTTCCATGGTGCACAGTGTCCGGAGTTGATGGTGAAGTCTG
 AGCAAGCTGAGAACTAGGAAGAGAGGATCAGCAGCGACTACATCGAAACAGAAAATGGTTCTCATGGT
 TGACTTGGACCAGACCCTGATTCATACGACTGAGCAGCACTGTCCCAGATGTCCAACAAAGGCATCTTC
 CACTTCCAGCTGGGCCGGGGGAGCCATGCTGCACACGCGCCTGAGGCCCTCACTGCAAGGATTTCTCGG
 AGAAAATCGCAAAGCTGTATGAGCTGCACGTTTTACCTTCGGCAGCCGTCTGTATGCCACACCATCGC
 AGGCTTTCTGGACCCGAGAAGAAGCTTTTTTCTCATCGAATATTGTCTAGAGATGAATGTATTGACCCG
 TTTTCTAAAACAGGAACTTAGAAATCTTTCCCTGTGGAGACTCAATGGTTTGCATCATCGATGACC
 GAGAAGATGTGTGAAGTTTCGCCCTAACCTCATAACTGTGAAGAAGTACGTCTACTTCCAGGCACAGG
 TGATGTGAATGCACCCCTGCAGCCCGGAACTCAGGCAAGGAGAAAAGTAAATCATTCTTCTAAGGGA
 GGGGACGCTTGGAAACAGCTCTCTCCGTGAGGGACCTGAGGACGGCAGGCCTGCTCCCGGGGTGGAGC
 ACAGCAATGGCCTTGGGAAGGCCTCCCGAGAGCTCAATGGTGGTGAAGCTGTGCCAGGAGTTTTTCCAG
 TAAAGCAGATGAGAAGGAAGCCTGGCCCTCACTCGGGCCTCTCCTGCCAGCAGCTCTAGTGCCACAGAG
 CCAACTGAAGCTCCAGAGCTCCCTGTGTCTGTGAGTGGGATGGTCGGACAACGCCAGGGGTGCAGCCCA
 CTCAGGGTGTGCGCCACCCAGGATTTGGACTTTGACCTGTCCAGCGACAGCGAGAGCAGCGAGAGCAG
 CAGCAGGTGAGAAGTCCAGAGGCTCCAGCCCCCAGGAGAGAACAAAAGCAGCTCCAGAGCACAGTGGG
 CCCCAGGACAGAGTGGGGCAGAGCTGCAGCAAGCCCCCTGGGAGAGTCTGGGCTAGCATCCACCCCC
 ATGACAAAGGGTCCAGACTGGACACTCAGGAGGAGGTGAACGGGACAGCCTCTGTGGCTGGGCAATGG
 CAGTGTGGACCGAAAGAGGCTGAAACGGAATCCAGAACAGTGAAGCAGTCAAGTGTCACTGCAGGCGAG
 TCCCTAGATCAGAGTGTGGGGAGGAAGAGGAAGAGGACACAGACAGTGAACACTTGATACACCTCG
 AGGAGATCCTGGTCCGAGTACACACTGACTATTACACAAAGTATGACAGATACCTCAACAAGGAGCTTGA
 GGAAGCTCCAGATATACGGAAAATTGTGCCAGAGCTCAAGAGCAAGGTGCTCGCAGATGTGGCTGTGATA
 TTCAGTGGGCTGCACCAACAACTTTCTGTGGAAAAGACTCGCGAGCACTATCACGCCACGGCCCTGG
 GAGCAAGGTCTTACCCAGTGGTGTGAGCCCTGATGCTCCAGACAGGGCCACTCACCTCATTGCAGC
 ACGGGCTGGTACAGAGAAGGTGCGCCAGGCACAGGAGTGCAAACCTACATGTGGTCAAGCCTGATTGG
 CTGTGGAGCTGCCTGGAGCGCTGGGACAAGGTGGAGGAGCAGCTTTCCCACTCATAGATGACGATACCC
 GCACACATAGGGATAACAGCCCTGCAGTCTTCCAGACAGACAGTGTGCTTCCAACAGCCTTGTTC
 TCCAACACCCATCCATTTCAAGGCCATCCTGGTCCCAGGTTCCGATCTATGACTCTAACACAGGCAAG
 CTGATCCGGATGGGCCCCAGGGTTCTGCACCAGCTCCCTCCAGTGCCCACTTAACCATGGAGAGCCTT
 CCTCCTTCAAGCTGTTAGCCACATCAGCAGCAAATGTTTGGTGAAGAGTTGCCAGAATCTCAAGATGG
 AGAGCAGCTGGCCCTGCTAGAAGAAAGCGACAACCCAGTATGTCGAGGCAATGCCGTGTACTCTCTC
 TGTAAGGAGGACTTAGAGAGTATGGACAAGAGGTGACGACATCCTTGGAGAGGGCAGTGTGACAGT
 ACATCGAGAAGAAGAAGCCAGAAGACCAAGACAATGAGCAGGAGAGAGCCCCGAAGCCAGGAAGCCCCG
 GGCTCCAGGGATCCGAAGAGAGCAGCCTGTAGGCTTGCCTCATCTGGCAGAGGAGCACCCTGGCATG
 CGTGGGCCAGAGGCCACAAGAGGAACTAAATGAGGAAGACGCTGCCAGCGAGTCCAGCGGGGAGTCCA
 GCAACGATGATGAGGAGGCAGCAGTTCAGAAGCAGATGAGATGGCCGCTGCTCTGGAGGCGGAGCTTAA
 TGACCTCATG

ACGCGTACGCGGCCGCTCGAGCAGAACTCATCTCAGAAGAGGATCTGGCAGCAAATGATATCCTGGATT
 ACAAGGATGACGACGATAAGGTTTAA

Protein Sequence: >MR211312 representing NM_026295
 Red=Cloning site Green=Tags(s)

```
MEAPPAAGVPTECTPAVAGAEVRCPGPTPLRLLLEWKVAAGATVRIGSVLAVCETAASAQAGPAPARAAS
GGCVRAARTERRLRSERAGVVRELCAQPGQVVPAGALLVRLLEGCSHPVVMKGLCAECGQDLTQLQSKNGR
QQVPLSTATVSMVHSVPELMSVSEQAELKREDQQLHRNRKLVLMVDLDQTLIHTTEQHCPQMSNKGIF
HFQLGRGEPMLHTRLRPHCKDFLEKIAKLYELHVFTFGSRLYAHTIAGFLDPEKKLFSHRILSRDECIDP
FSKTGNLRNLFPCGDSMVCIIDDREDVWKFAPNLITVKKYVYFPGTGDVNAPPAARETQARRKVNHSSKG
GDALQALSVRDPEDGRPAPGVEHSNGLKASRELNGGEAVPGVFPKADKEKEAWPLTRASPSSSSGHE
PTEAPELPSVCEWDGRTTPGVQPTQGDAAATQDLDFDLSSDSESSSRSEGQRAPAPQERTKAAPHEHSG
PQDTSGGRAAASPLGESGPSIHPHDKGSDLDTQEEGERDSL CGLNGSVDRKEAETESQNSEQSGVTAGE
SLDQSVGEEEEEDTDDDHLIHLEEILVRVHTDYTYKYDRYLNKELEEAPDIRKIVPELKS KVLADVAVI
FSGLHPTNFPVEKTREHYHATALGAKVL TQLV LSPDAPDRATHL I AARAGTEKVRQAQECKHLHVSPDW
LWSCLERWDKVEEQLFPLIDDDTRTHRDNSPAVFPDRHSVLPTALFHPTPIHSHKHPGPEVRIYDSNTGK
LIRMGPQGSAPAPSSAPLNHGEPSSFRAVQPHQQQMFGEELPESQDGEQGPARRKRQPSMSEAMPLYTL
CKEDLESMDKEVDDILGEGSDDSDIEKKKPEDQNEQERAPKPRKPRAPGIRREQPVGLPSSGERSTPGM
RGRPRGHRKRLNEEDAASESSGESSNDDEEGSSSEADEMAAALEAELNDLM
```

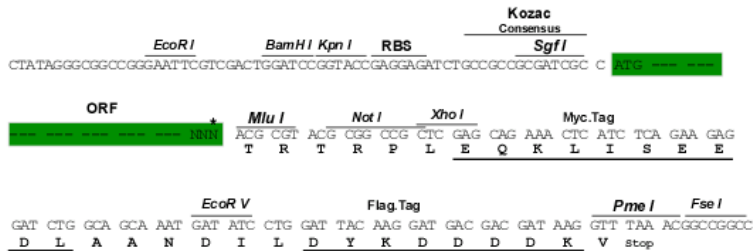
TRTRPLEQKLISEEDLAANDILDYKDDDDKV

Chromatograms: https://cdn.origene.com/chromatograms/mm9102_b08.zip

Restriction Sites: SgfI-MluI

Cloning Scheme:

Cloning sites used for ORF Shuttling:



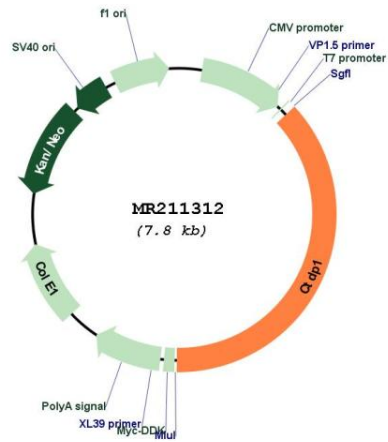
* The last codon before the Stop codon of the ORF

ACCN: NM_026295

ORF Size: 2880 bp

OTI Disclaimer:	The molecular sequence of this clone aligns with the gene accession number as a point of reference only. However, individual transcript sequences of the same gene can differ through naturally occurring variations (e.g. polymorphisms), each with its own valid existence. This clone is substantially in agreement with the reference, but a complete review of all prevailing variants is recommended prior to use. More info
OTI Annotation:	This clone was engineered to express the complete ORF with an expression tag. Expression varies depending on the nature of the gene.
Components:	The ORF clone is ion-exchange column purified and shipped in a 2D barcoded Matrix tube containing 10ug of transfection-ready, dried plasmid DNA (reconstitute with 100 ul of water).
Reconstitution Method:	<ol style="list-style-type: none"> 1. Centrifuge at 5,000xg for 5min. 2. Carefully open the tube and add 100ul of sterile water to dissolve the DNA. 3. Close the tube and incubate for 10 minutes at room temperature. 4. Briefly vortex the tube and then do a quick spin (less than 5000xg) to concentrate the liquid at the bottom. 5. Store the suspended plasmid at -20°C. The DNA is stable for at least one year from date of shipping when stored at -20°C.
RefSeq:	NM_026295.3
RefSeq Size:	3700 bp
RefSeq ORF:	2883 bp
Locus ID:	67655
UniProt ID:	Q7TSG2
Cytogenetics:	18 53.48 cM
MW:	104.6 kDa
Gene Summary:	Processively dephosphorylates 'Ser-2' and 'Ser-5' of the heptad repeats YSPTSPS in the C-terminal domain of the largest RNA polymerase II subunit. This promotes the activity of RNA polymerase II. Plays a role in the exit from mitosis by dephosphorylating crucial mitotic substrates (USP44, CDC20 and WEE1) that are required for M-phase-promoting factor (MPF)/CDK1 inactivation (By similarity).[UniProtKB/Swiss-Prot Function]

Product images:



Circular map for MR211312