

Product datasheet for **MR211284**

Morc1 (NM_010816) Mouse Tagged ORF Clone

Product data:

Product Type:	Expression Plasmids
Product Name:	Morc1 (NM_010816) Mouse Tagged ORF Clone
Tag:	Myc-DDK
Symbol:	Morc1
Synonyms:	Morc
Mammalian Cell Selection:	Neomycin
Vector:	pCMV6-Entry (PS100001)
E. coli Selection:	Kanamycin (25 ug/mL)



[View online »](#)

ORF Nucleotide Sequence:

>MR211284 representing NM_010816
 Red=Cloning site Blue=ORF Green=Tags(s)

TTTTGTAATACGACTCACTATAGGGCGGCCGGGAATTCGTCGACTGGATCCGGTACCGAGGAGATCTGCC
 GCC**CGCATCGCC**

ATGGACAATATGCCTTGCTGCAGAGGGCTAAACTGCATCTGGATTTTCATCCACGCGAATCCACAACAC
 ACAGTTTCCTCTTTGGAGCACTGGCTGAGTTGCTGGACAACGCAAGAGATGCCGGGGCTGTAAAGACTCGA
 TGTGTTTTTCAGTGGATAATGAAACACTGCAGGGAGGATTCATGTTGTGTTTCCTGGATGATGGATGTGGC
 ATGAGCCCTGATGAAGCTTCAGACGTAATTTACTTTGGAACATCCAAGAAACGCTTGTGACCTTGAAGT
 TCATCGGGCAATATGGTAACGGGCTTAAGAGCGGCTCCATGAGAATCGGCAAGACTGTATTCTTTTTCAC
 AAAGAAGGAAGAGACCATGACCTGTCTGTTCTTCTCTCAGACTTCTGTGAAAAAGAAAGTCTCACTGAG
 GTTGTAGTTCCAATACCTTCATGGCTAACGAGAACCAGAGAGATACACAGATGACCCGAGAAGTTCT
 TCACAGAATTGTCCATCATTTTTCAAGTACTCCCCATTTAAGACCGAAGCTGAATTGATGCAGCAGTTTGA
 TATGATCTACGGGAGATGTGGAACCTTGGCTGATTATTTATAACTTGAAGCTGCTGCTTAGCGGAGAACCA
 GAGTTGGATGTTACAACCGACAAAGAAGATATACTGATGGCCGAGGCTCCGGAGGAAATTCAGAGAGAC
 GGTCAATCAGAGCCTACACAGCTGTTCTGTATTTTGAACCCGGATGAAAATATTTATTCAGGCCAAAAG
 AGTTCAAACAAGCATCTGTGTTATTCCTCTACAAACCCAGAAAATACCAATATACTACATCTTCTTTTC
 AAAGGGAAGTTTAAAAGTGAAGTTCAAAAGGCAGAAAGCAGTAAAGAGGGCTGAACTCCTGTTTAAAG
 AGGTGCAAGCCAAAGTAAACCAGCCGACAGAATTGCTTTGTCTTCTACCCAGGATGCATTACAGAAAGC
 TCTGCAAGACGTGGACACAAAGCATAAAAGTCTTCGCCAGAAACAGAGGGCCCTAAGGAAAGCAAGA
 CTCTCTCTGTTCTTTGGAGTGAACACAGAAGACCAACCAAGCTGGAATGTTTCATTACAGTAATAACC
 GATTGATCAAAAATGTACGAGAAGTTGGTCCCCAGCTGAAAATGAAGTCACTACTTGGTGCAGGTATAAT
 TGGAAATGTGAACATACCTTTGGAGACCATGGAACCATCCATAATAACAAGAATTCCTCAATGTCCAA
 GAATACAATCATCTACTAAAAGTCATGGGACAGTACTTGTATCCAGTACTGTAAGGACATTGGGATCAGTA
 ATAGAAACCTAACACTGTTTTGGGACGAATTTAAATATCAGCATAGCAAAGACACAGACAGCTCTTTGGA
 ATCTCTCCAATGGCGAAGAAGACAAGCCATGGGTATCCCATTCATCTACAATGCGATCTTTGTCTCAA
 TGGAGAGTCTGCCTTCTCTTCCAATTACCAGGAAAAGGATTACCTGACCTATGGATTTGTGCCAGTA
 ATCCCAACAACCTGAAAAACAGCTGTAAACCAGATAGAGCGCTGCCTTCTATCCCACTGGGCACCGTGAA
 CAGAAGACCACCATCAAAGATGAGAGAGAGAGGCAACTCAAGAGTCAGTCCAGAGATATCAGGACAAG
 CTGGTGGAAAGCGCAGCCGAGAAGTCTCAACTTATAGTAAACAAGCAAGATCCCCGAGTTCAAGTCTCTCT
 GCCTTTCTCTCAGCACTCAAGGAAAAATCCAAACTTGGGAGAATCCAGCCTTCAGGGGCAGACCTGACTCA
 GGGCAGTCCCTCATCTGTTAAGCTTTCTGTTATGCAAAGAAGCCAAAAGAGGAGCACAGAGGATACTCAC
 TCGGACGTGGAGTTTCATCTGCATGACGAAGATCCGAAGAAGTCTGTGAAGAAGACCGTGAAGTACCTGC
 AGCCTGGTCACGCTCCAGCTCTATTGAAAAACCTCAAACCTCGAGGACACAGCCCAGGTTTCTTACGGGA
 AATAAAAAAGCAGCAGAGTGAGAGCCTCGTGCAGGCAGGCAAGGCATCCACTGACGTGGCTAGCAGCAGA
 GATCCAACCTGTGACCATGGTTTGGGATCAAAGCAGCACCAGGCTCACTGAAACAAGAAGAAGAGGAGG
 AAGTCCCCTCATAAAGCCAGACAAACAAGAGCTGTGTGATGATACTCCAGTGTGAAAGGAAATTTCTTC
 AGCGCTTCACTGGAAAAGCTTGGCCGGGTGCAAATGGAAGATTTAAGTCCACGTTCTGGACACAAAATC
 AACTCTGTGAGTGGTACTGTGACTGCCGGCTTCAACCAATGCCTTCTCAAAGCATGTCTGTGGAAGAAA
 CAGCAAGAAAAGTCTGTCTAACTTAAGGGAATTTCTTATACTTTGTTCCCGAGTTTTCAGCTATCATC
 AGAATTTGAGTGCACATCTGTGGAAGAACTCATAACAAATCCTGAGCTGGAGCGATGCCAGAGAATATA
 AACGAAAAGCTAAAAACGTGTTTCAACCAGATCCAGAATATCTACATGGCTCAGTATGAGAAAAGACTCA
 AGAGGAAAATGCAGTCCATTGTCTATGAGGCAAACAGAAGGGCTTACTCAACCAAGTGTTCCTGGGACA
 GTGTGAACTGAAAAGGAAGAGGACTGAGGAGAAAACCTCAGTGACCTTCGTGCAAAGCTGGCCTTGTGCTG
 CAGAAAATTCAGCTGGTGGTCCAGCAGGAGACCCGACGAGATTGATGCTTACTAGAAGATTTGCTTA
 AAGAAGATCGGCTCCCGACCGCTTACATGAAAAGTCTCCAGAGTCAGCG

ACGCGTACGCGGCCGCTCGAGCAGAAAACCTCATCTCAGAAGAGGATCTGGCAGCAAATGATATCCTGGATT
 ACAAGGATGACGACGATAAGGTTTAA

Protein Sequence: >MR211284 representing NM_010816
 Red=Cloning site Green=Tags(s)

MDKYALLQRAKLHLDFIHANSTTHSFLFGALAELLDNARDAGAVRLDVFSVDNETLQGGFMLCFLDDGGC
 MSPDEASDVIYFGTSKKRLSTLKF IGQYGNLKS GSGMRIGKDCILFTKKEETMTCLFFSQTFC EKEGLTE
 VVVPIPSWL TRTRESITDDPQKFFTEL SIFKYSPFKTEAELMQQFDMIYGRCGTLLIIYNLKL LLSGEP
 ELDVTTDKEDILMAEPEEIPERRSFRAYTAVL YFEP RMIKIFIQAKRVQTKHLKCYSLYKPRKYQYTTSS F
 KGKFKTEVQKAEEAVKRAELLFKEVQAKVNQPDRIALSSTQDALQKALQDVDTKHKSLRQKORALRKART
 LSLFFGVNTEDQHQA G MFIYSNNRLIKMYEKVGPQLKMK SLLGAGIIGIVNI PLETMEPSH NKQEF LNVQ
 EYNHLLKVMGQYLIQYCKDIGISNRNLTLFWDEFKYQHSKDTDSLES LQWRRRQAMGIPFILQCDLCLK
 WRVLPSSSNYQEKGLPDLWICASNPNLENSCNQIERLPSIPLGTVNRPPSKDERERQLQESVQRYQDK
 LVEAQPQKSQLIVTSKIPEFKSSCLSSALKEKSKLGRIQPSGADLTQGGSPSSVKLSFMQRSQKRSTEDTH
 SDVEFICMTKIPKKS VKKTVKYLQPGHAPALLENL KLEDTAQVSSREIKKQSESLVQAGKASTDVASSR
 DPTVTMWDQSS TKVSLKQEEEEVPLIKPDKQELCDDTPVVKGNSSALHKKSLPGVQMEDLSPRS GHKI
 NSVSGDCQLPASPMPQSMSVEETARKLLSNLREILLYVPEFQLSSEFECT SVEELITNPELERCPENI
 NEK LKTCFNQIQNIYMAQY EKRLKRKMQSIVYEANRRGLLNQVFLGQCE LKRRRTEEKLSDLRAKLALL
 QKLQLGGPAGDPQQIDAYLEDLLKEDRLPTALHEKSPESA

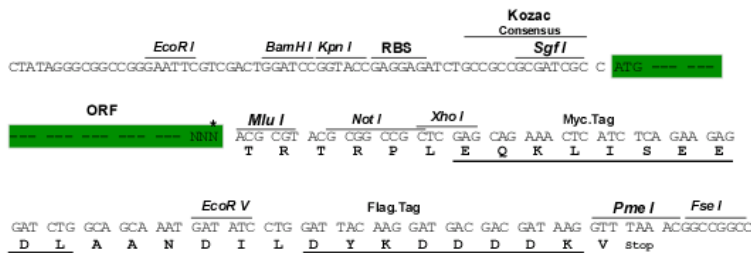
TRTRPLEQKLISEEDLAANDILDYKDDDDKV

Chromatograms: https://cdn.origene.com/chromatograms/mm9094_f07.zip

Restriction Sites: SgfI-MluI

Cloning Scheme:

Cloning sites used for ORF Shuttling:

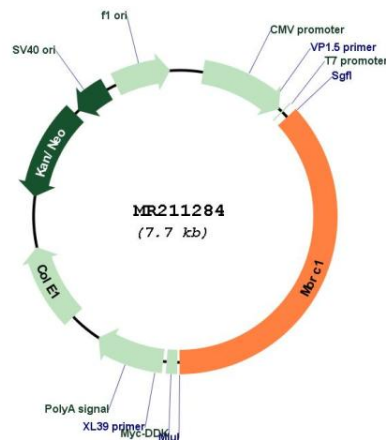


* The last codon before the Stop codon of the ORF

ACCN: NM_010816

ORF Size: 2850 bp

OTI Disclaimer:	The molecular sequence of this clone aligns with the gene accession number as a point of reference only. However, individual transcript sequences of the same gene can differ through naturally occurring variations (e.g. polymorphisms), each with its own valid existence. This clone is substantially in agreement with the reference, but a complete review of all prevailing variants is recommended prior to use. More info
OTI Annotation:	This clone was engineered to express the complete ORF with an expression tag. Expression varies depending on the nature of the gene.
Components:	The ORF clone is ion-exchange column purified and shipped in a 2D barcoded Matrix tube containing 10ug of transfection-ready, dried plasmid DNA (reconstitute with 100 ul of water).
Reconstitution Method:	<ol style="list-style-type: none"> 1. Centrifuge at 5,000xg for 5min. 2. Carefully open the tube and add 100ul of sterile water to dissolve the DNA. 3. Close the tube and incubate for 10 minutes at room temperature. 4. Briefly vortex the tube and then do a quick spin (less than 5000xg) to concentrate the liquid at the bottom. 5. Store the suspended plasmid at -20°C. The DNA is stable for at least one year from date of shipping when stored at -20°C.
RefSeq:	NM_010816.1 , NP_034946.1
RefSeq Size:	3050 bp
RefSeq ORF:	2853 bp
Locus ID:	17450
UniProt ID:	Q9WVL5
Cytogenetics:	16 30.75 cM
MW:	108.3 kDa
Gene Summary:	Required for spermatogenesis.[UniProtKB/Swiss-Prot Function]

Product images:


Circular map for MR211284