

Product datasheet for **MR211273**

Pld2 (BC068317) Mouse Tagged ORF Clone

Product data:

Product Type:	Expression Plasmids
Product Name:	Pld2 (BC068317) Mouse Tagged ORF Clone
Tag:	Myc-DDK
Symbol:	Pld2
Synonyms:	PLD1C
Mammalian Cell Selection:	Neomycin
Vector:	pCMV6-Entry (PS100001)
E. coli Selection:	Kanamycin (25 ug/mL)



[View online »](#)

ORF Nucleotide Sequence:

>MR211273 representing BC068317
 Red=Cloning site Blue=ORF Green=Tags(s)

TTTTGTAATACGACTCACTATAGGGCGGCCGGGAATTCGTCGACTGGATCCGGTACCGAGGAGATCTGCC
 GCC**CGGATCGCC**

ATGACTGTAACCCAGAAGAACCTCTTCCCTATGGGGACTATCTGAACTCCAGCCAGTTGCACATGGAGC
 CAGATGAGGTTGACACTCTGAGGGAAGGAGAGGATCCAGCTGATCGAATGCATCCCTATCTGGCCATCTA
 TGACCTTCAGCCTCTGAAAGCACACCCCTTGGTGTTCGCCCTGGGGTCCCTGTTATAGCCAGGTGGTG
 GGCACCGAAAGATACACCAGCGGATCCAAGGTGGGAACCTGACTCTATATTCTGTTTCGCTTGACGCATG
 GTGACTTTACCTGGACAACCAAGAAGTTCGACACTTTCAGGAGCTGCATCGGGACCTCCAGAGACA
 CAAAGTCTTGATGAGTCTGCTCCCTTTGGCTCGCTTGTGTGACCCATTCTCCAGCCCGAGAGGCCAGCC
 GCCGAGGATATACCCTCCCTACCCGAGGAGGTTCTGAGGGCTCTGCCAGACACAGCCAGCAAACAGA
 AATACTTGAAAATTACCTCAACCGCTCTGACCATGTCTTTCTATCGCAATTACCACGCCATGACAGA
 ATTTCTGGAAGTCAGTCAACTTCTTTATCCCAGACCTTGGCTCCAAAGGACTGGAAGGGGTGATCCGG
 AAGCGCTCGGGCGGCATCGAGTCCCGGCTTACCTTCTGTGGCCGAGACCAAGTTTGTATCGATGGT
 CCAAGAGGTGGCTGGTGGTGAAGGACTCCTTCTGCTGTACATGCGCCCGAGACCCGGCGCCATCTCATT
 TGTTACGCTTTTTGACCTGGCTTTGAGGTCCAGGTCCGAAAAAGGAGCACAGAGACCGGTATGGGGTG
 AGGATCGACACCTCCACAGGTCCTGATTCTCAAATGCAGCAGCTACCGGCAGGCACGGTGGTGGGGCC
 AGGAGATCACGGAGCTGGCACAGGGTTCGGGCAGAGATTTTCTACAGCTACATCAGCATGACAGCTATGC
 CCCACCCCGCCCGCACCTGGCCCGTGGTTTGTGAATGGGGCAGGTTACTTTGCTGCTGTGGCAGAT
 GCCATCTGCGAGCTCAAGAGGAGATTTTATCACAGACTGGTGGTTGAGTCTGAAATTTACCTGAAGC
 GTCAGCCCATTCGACGACTGGAGACTGGACATTATGCTCAAGAGGAAGCGGGAAGGATGTCGGAGT
 TTCCATACTGCTGTTTAAGGAAGTGGAGCTGGCCTTGGGCATCAACAGTGGCTACAGCAAGAGGACGCTG
 ATGCTGCTGCATCCCAACATAAAGGTGATGCGACACCCAGACCTTGTGACTGTGGGCTCATCACGAGA
 AGCTCCTGGTGGTAGACCAAGTGGTGGCATTCTTGGCGGGCTGGACCTGGCCTTCGGCCCTGGGATGA
 CGTGCAATACCGACTGACTGACCTGGGTGACCCCTCTGAACCTGTACATTTACAGACTCCACACTAGGT
 TCAGACCTGCAGCCACTCCAGACCTCTCGATAACCAATTTCTTGGCTGGGAAAGGACTACAGCAACC
 TCATCACCAAGGACTGGGTGCAGCTGGACCGCCTTTTGAAGATTTATCGACAGGGAGACCACACCCAG
 GATGCCATGGAGGATGTTGGAGTGGTTGTACACGGAGTAGCTGCCAGGGACCTTGCCCGCACTTCATC
 CAGCGCTGGAATTTACCAAGACCACCAAGGCCAGGTATAAGACACCTTTGTACCCCTACCTGCTGCCCA
 AGTCCACCAGCACTGAAACAATCTCCCTTCATGATCCAGGCGGGCAGTGTGCCACTGTGCGAGTCTT
 GAGGTCTGTGGATCGATGGTCAGCAGGGACATTGGAGAATCCATCCTCAATGCCTACCTACATACCATT
 CGAGAGAGCCAGCACTTCTCTACATTGAGAATCAGTTCTTCAATTAGCTGCTCAGATGGGCGAACAGTTC
 TGAACAAGGTGGGCGATGAGATTGTGGACAGAATCCTGAAGGCTCACGAACAGGGGCAGTGTTCGGAGT
 CTACTTGCTTCTGCCTTTGCTCCCTGGCTTTGAGGGGGACATCTCCACAGGGGGTGGTAACCTCCATCCAG
 GCTATTCTGCACTTACCTACAGCCTCTGCCTCCTTACCCTTTCTTCTCTCAGGACCTGTGTCTGT
 GGAACATTCATCCTACATCGTCTCAAAGCAGCCATGGGGACTGCGTGGCGAGATTACATGTCCATCTG
 TGGGCTTCGCACCCATGGAGAGCTGGCGGGCACCCAATCTCTGAGCTCATCTATATCCACAGCAAGATG
 CTCATTGCGGATGACAGAACAGTCATCATTGGTTCTGCGAACATCAATGACAGGAGCTTGTGGGAAGC
 GTGACAGTGAGCTAGCCATCCTGATCAAGGACACAGAAATGGAACCATCCCTCATGGATGGGGTGGAGTA
 CCAGGCAGGCAGATTTGCCTTGAGTTTGCGAAGCACTGTTTCAGTGTGATTCTTGGGGCAAATACCTGG
 CCAGACCTGGATCTCCGAGACCTGTCTGTGATGACTTCTCCAGCTGTGGCAAGAAACAGCGGAGAACA
 ATGCCACCATCTATGAGCAGATCTCCGCTGCCTGCCGTCCAATGCTACCCGTTCCCTGCGGGCTCTCCG
 GGAGTATGTGGCTGTGGAGTCTTGGCTACAGTCAGCCCTTCTTGGCTCAGTCTGAGCTTGCCACATC
 CAGGGCCACCTAGTTCACCTCCCTCAAGTTTCTGGAGGACGAGTCTTGTGCCCCACTGGGGAGTA
 AAGAAGGGATGATACCTTAGAAGTGTGGACA

ACGCGTACGCGGCCGCTCGAGCAGAAACTCATCTCAGAAGAGGATCTGGCAGCAAATGATATCCTGGATT
 ACAAGGATGACGACGATAAGGTTTAA

Protein Sequence: >MR211273 representing BC068317
 Red=Cloning site Green=Tags(s)

MTVTQKNLFPYGDYLNSSQLHMPEVDVTLREGEDPADRMHPYLAIDYDLQPLKAHPLVFAPGVPVIAQVV
 GTERYTSKSGKVGCTCLYSVRLTHGDFWTTKKKFRHFQELHRDLQRHKVLSLLPLARFVATHSPAREAA
 AEDIPSLPRGGSEGSARHTASKQKYLENYLNRLLTMSFYRNYHAMTEFLEVSQLSFIPDLGSKGLEGVIR
 KRSGGHRVPGFTFCGRDQVCYRWSKRWL VVKDSFLL YMRPETGAISFVQLFDPGFEVQVGKRSTETRYGV
 RIDTSHRSLILKCSSYRQARWGWQEITELAQGSGRDFLQLHQHDSYAPPRPGTLARWFVNGAGYFAAVAD
 AILRAQEEIFITDWLSP E IYLKRP AHSDDWRLDIMLKRKAE EGVRS ILLFKEVELALGINSYKRTL
 MLLHPNIKVMRHPDLVTLWAHHEKLLVVDQVVAFLGGLDLAFGRWDDVQYRLTDLGDPSEPVLHTPTLG
 SDPAATPDL SHNQFFWLKGDYSNLITKDWQLDRPFEDFIDRETTPRMPWRDVGVVHGAARDLARHFI
 QRWNFTKTKARYKTPLYPYLLPKSTSTANNLPFMIPGGQCATVQVLRSDRWSAGTLENSILNAYLHTI
 RESQHFLYIENQFFISCS DGRV LNKV GDEIVDRILKAHEQGQCFRVYLLPLLPGFEGDISTGGGNSIQ
 AILHFTYSLCLLHPFFSLRTL CRGEHSILHRLKAAMGTAWRDYMSICGLRTHGELGGHPISELIYIHSKM
 LIADDRTVIIGSANINDRSL LGKR DSELA ILIKDTEMEPSLMDGVEYQAGRFALSLRKHCFSVILGANTW
 PDLDLRDPVCDFFQLWQETAENNATIYEQIFRCLPSNATRSRLRALREYVAVESLATVSPSLAQSELAHI
 QGHLVHFPLKFLEDESLLPPLGSKEGMIPLEVWT

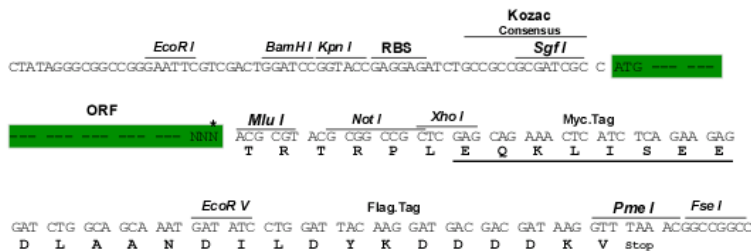
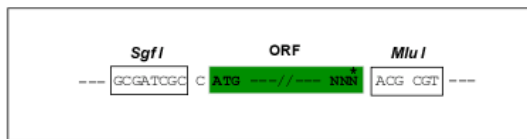
TRTRPLEQKLISEEDLAANDILDYKDDDDKV

Chromatograms: https://cdn.origene.com/chromatograms/mm9043_b04.zip

Restriction Sites: SgfI-MluI

Cloning Scheme:

Cloning sites used for ORF Shuttling:



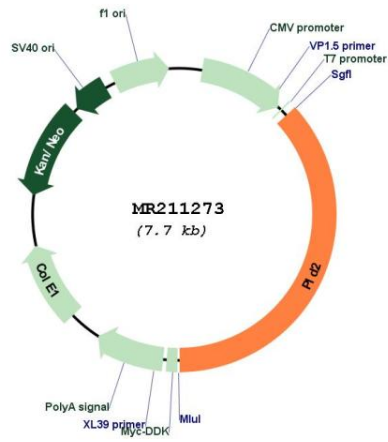
* The last codon before the Stop codon of the ORF

ACCN: BC068317

ORF Size: 2832 bp

OTI Disclaimer:	The molecular sequence of this clone aligns with the gene accession number as a point of reference only. However, individual transcript sequences of the same gene can differ through naturally occurring variations (e.g. polymorphisms), each with its own valid existence. This clone is substantially in agreement with the reference, but a complete review of all prevailing variants is recommended prior to use. More info
OTI Annotation:	This clone was engineered to express the complete ORF with an expression tag. Expression varies depending on the nature of the gene.
Components:	The ORF clone is ion-exchange column purified and shipped in a 2D barcoded Matrix tube containing 10ug of transfection-ready, dried plasmid DNA (reconstitute with 100 ul of water).
Reconstitution Method:	<ol style="list-style-type: none">1. Centrifuge at 5,000xg for 5min.2. Carefully open the tube and add 100ul of sterile water to dissolve the DNA.3. Close the tube and incubate for 10 minutes at room temperature.4. Briefly vortex the tube and then do a quick spin (less than 5000xg) to concentrate the liquid at the bottom.5. Store the suspended plasmid at -20°C. The DNA is stable for at least one year from date of shipping when stored at -20°C.
RefSeq:	BC068317.1
RefSeq Size:	3671 bp
RefSeq ORF:	2834 bp
Locus ID:	18806
Cytogenetics:	11 42.99 cM
MW:	134.5 kDa
Gene Summary:	This gene is a member of the phospholipase D (PLD) superfamily. The encoded protein catalyzes the hydrolysis of phosphatidylcholine to phosphatidic acid and choline. Phosphatidic acid is an essential intracellular lipid second messenger for many signaling pathways and has been implicated in a variety of physiological processes including cytoskeletal organization and cell proliferation. A similar gene in human may also function as a guanine nucleotide exchange factor (GEF) for the small GTPase Rac2. Alternative splicing results in multiple transcript variants. [provided by RefSeq, Oct 2014]

Product images:



Circular map for MR211273