

Product datasheet for **MR211266**

Wdr3 (NM_175552) Mouse Tagged ORF Clone

Product data:

Product Type:	Expression Plasmids
Product Name:	Wdr3 (NM_175552) Mouse Tagged ORF Clone
Tag:	Myc-DDK
Symbol:	Wdr3
Synonyms:	AW546279; D030020G18Rik
Mammalian Cell Selection:	Neomycin
Vector:	pCMV6-Entry (PS100001)
E. coli Selection:	Kanamycin (25 ug/mL)



[View online »](#)

ORF Nucleotide Sequence:

>MR211266 representing NM_175552
 Red=Cloning site Blue=ORF Green=Tags(s)

TTTTGTAATACGACTCACTATAGGGCGGCCGGAATTCGTCGACTGGATCCGGTACCGAGGAGATCTGCC
 GCC**CGGATCGCC**

ATGGGGCTTACTAAACAGTATCTGCGCTATGTGGCTAGTGTCTTTGGCTTATTGGCAGCCAAAAAG
 GTAACATTGTTTTGTGACACTCCGTGGTGAGAAAGGACGCTATGTGGCAGTACCCGCTGTGAACACGT
 TTTTATCTGGGACTTAAGGAAAGCGGAGAGATCCTTATCCTTCAGGGGAATAAACAAAGAAGTCACTTGC
 TTGTGTCCTTCCCAGATGGGCTGCATCTAGCTGTTGGCTATGAGGATGGAGCCATCCGAATCTTCAGCC
 TCCTCAGTGGTGAAGGAAACATAACCTTCAATGGACACAAAGCAGCTGTCACCAGCTTAAAGTACGATCA
 GCTAGGAGGCAGGCTGGCTTCTGGGTCTAAGGATACAGATGTCATTATTTGGGATGTGATCAATGAAAGT
 GGCCTCTACCGTCTAAGGGACACAAGGATGCTGTACACAAGCTTTGTTTCTCCGAGAAAGGAATCTGC
 TGGTTACAAGTGGGAAAGACACTATGGTAAAGTGGTGGGACCTGGATAACCAGCACTGCTTCAAACAAT
 GGTGGCCACCGAAGTGGGTGTGGGGCTTGGTTCTGGTTTCAGAAGAAAAGCGACTAATCACTGGGGCT
 GCAGACAGTGGAGTGGAGCCTGGGACATCGACTATCTGCAAGAGATTGATGACCAGAAGAACCAGAGC
 CCAAGAAAATCAAGAGTGTCTTGGAAATACAGGACACACCTGAATCAGAGGACAGCACCTTGGAGCGGA
 TGATGAAAAATCTGAAGATCGCATACTTTCGTGTAGTAAAGCTGGCTCCATAATGCGGGAAGGAAGGGAC
 AGAGTTGTGAACCTCGCCGTGGACAAGACAGGCAGGATTCCTGCTGGCCAGGAACTGATTCTGTGTTAG
 AAGTATTTTGTATTCTTCCAAAGCAGAAGTTCAGAAGAAAATGGATAAGAAGCTAAAGAAAAGCTAGAAA
 GAAAGCAAAGTTGAACTCTGCCAATGAGGAGGAGGACCTGAAACGAGTGTCTCGATGACACTGCAGGAC
 GAGATCCTTCGAGTAGCCAAGATCAAGACTTCTGCCAAGATCAAATCTTTTGACCTGATTCACTCGCCTC
 AAGGAGAGTTAAAGGCCGCTCTTCTGTGCAGAACAATCTGGTGGAGTTGATTCCGCTCAATCGCTCCTT
 GCCAGCCCTCAGCCTGTGAGGACAAGCCGGATCACCATTTGGAGGCCACCGCAGCGACGTGCGCACTTTG
 TCCTTCAGCTCGGATAATATAGCTGTGCTTTCAGCAGCAGCCGATTCCATTAAGATCTGGAACAGGTCTA
 CCCTGCAGTGTATCCGCACCATGCCTTGTGAATATGCTCTCTGCTCCTTCTCGTCCCGGCGATAGGCA
 GGTGGTCAATAGGAACAAAGACAGGAAAATCTGCAACTTTACGACCTGGCCTCAGGCACTCTCTGGAGACA
 ATAGCTGCCCATGATGGAGCCCTGTGGTCCATGTCTCTTCTCCAGATCAGCGTGGCTTTGTGACAGGTG
 GCGCTGACAAAGCTGTCAAGTTCTGGGATTTTGTGTTGGTACAGATAAAAATAGTACCCAGAAGAGACT
 TTCTGTGAAGCAGACTCGAACCTTCAGCTAGATGAGGACGTCTGTGTGTGAGTACTCTCCCAATCAA
 AAGCTGCTGGCTGTGCTTTTGTGGACTGCACTGTGAAGTTTTCTATGTTGACACTTTAAAGTTTTTTC
 TCTCACTGATGGACACAAACTGCCTGTTTTATGATGGACATCTCCCATGATGGAGCACTAATAGCAAC
 TGGTTCTGCTGATAGAAATGTGAAAATCTGGGGCTGGACTTTGGGGACTGCCACAGGTCTCTTTTGCA
 CATGATGACAGTGTGATGTATCTACGCTTTGTGCCTAAGTCTCACCTCTTCTTCCCGCTGGGAAGGACC
 ACAAGATCAAGCAGTGGGATGCAGACAAGTTTGTGACACATCCAAACGCTGGAGGGACACCACCAGGAAAT
 ATGGTGTTTGGCTGTGAGCCCACTGGAGACTACGTTGTATCAGCATCTCATGACAAGTCGCTGAGACTC
 TGGGAGAGAACGAGAGAGCCTCTTATTCTCGAGGAAGAAAGGAAATGCAAAGGGAAGCAGAGTATGAGG
 AGAGCGTGGCCAAAGAAGACCAGCCGGCAGTTCAGGGGAGACCAAGGTGACAATTTCACTGGGAA
 GAAGACAATTGAAACAGTCAAAGCGGCTGAGAGGATCATGGAGGCCATCGAGCTGCATCGAGAAGAAAAT
 GCAAAAATGAAAAGAACACAGAGCCATTTGTAAAGCAGCGGGGAAAGAGGTTCTCTTCTGTCAACCCCA
 TCTGATGGCTCATGGCAATATTTCTCCTTCAGCGTATGTGTTAGAGACTTTTAAAGGGATCAGGTCAAG
 TGAAGTGAAGAGGCCCTGCTTGTGCTGCCATTCTCTATGTCCCAGACGTTCTTACACTGTTCAATGAA
 TTCATCCAGACGGGCTTGGATGTCGAGCTCTTGTGCCGTGCCTCTTTTTTCTCCTCAGGATCACTTTG
 GCCAGATCACCAGCAACCAGATGCTTGTGCCGTGATAGAGAACTAAAGGAAACAACTATTTCAAAGT
 CAGACAAGTCCAGGATGCCATTGGCTTCAATATGGCTGGTCTCGATTATCTCAAGAGAGAGTGTGAAGCA
 AAGAGTGAAGTGTGTTTTTTCAGAAGCTACTAGTCACTTGAAGAGAAGAAGAAAAACGAAAAACA
 GAAAAGGATGATTTTAACTGACT

ACGCGTACGCGGCCGCTCGAGCAGAACTCATCTCAGAAGAGGATCTGGCAGCAAATGATATCCTGGATT
 ACAAGGATGACGACGATAAGGTTTAA

Protein Sequence: >MR211266 representing NM_175552
 Red=Cloning site Green=Tags(s)

MGLTKQYLRVVASAVFGLIGSQKGNIVFVTLRGEKGRYVAVPACEHVFIWDLRKGEKILILQGNKQEVTC
 LCPSPDGLHLAVGYEDGAIKIFSLLSGEGNITFNGHKAAVTSLKYDQLGGRLASGSKDVTVDVINES
 GLYRLKGHKDAVTQALFLRERNLLVTSKGDVMKWWDLNQHCFTMVGHRTEVWGLVLVSEEKRLITGA
 ADSELRWDIDYDLQEIDDPEEPEPKKIKECPGIQDTPESDSTLEADDEKSEDRILSCSKAGSIMREGRD
 RVVNLAVDKTGRILACHGTDVLEVFCLSKAEVQKMKDKLKKARKKARLNSANEEEDPETSVMSTLQD
 EILRVAKIKTSAKIKSFDLIHSPQGELKAVFLLQNNLVELYSLNASLPAPQPVRTSRITIGHRSDVRTL
 SFSSDNIAVLSAAADSIKIWNRLSTLQCIKRTMPCEYALCSFFVPGDRQVVIKTKGNLQYDLASGTLLET
 IAAHDGALWSMSLSPDQRFVTTGGADKAVKFWDFELVTDKNSTQKRLSVKQTRTLQLDEDVLCVSYSPNQ
 KLLAVSLLDCTVKVFYVDTLKFFLSLYGHKLPVLCMDISHDGLIATGSADRNKVIWGLDFGDCHRSLFA
 HDDSVMYLRFPKSHLFFTAGKDHKIKQWDADKFEHIQTLEGHHQEIWCLAVSPSGDYVVSASHDKSLRL
 WERTREPLILEEEREMQREAEYEEVAKEDQPAVPGETQGDNYFTGKKTIVKAAERIMEAIELHREET
 AKMKEHRAICKAAGKEVPLPVNIPILMAHGNI SPSAYVLETFKGIKRSSELEEALLVLPFSYVPDVLTLFNE
 FIQTGLDVELLCRCLFLLRIHFQIITSNQMLVPVIEKLETTISKVRQVQDAIGFNMAGLDYLKRECEA
 KSEVMFFAEATSHLEEKKKRKNRKMILTTLT

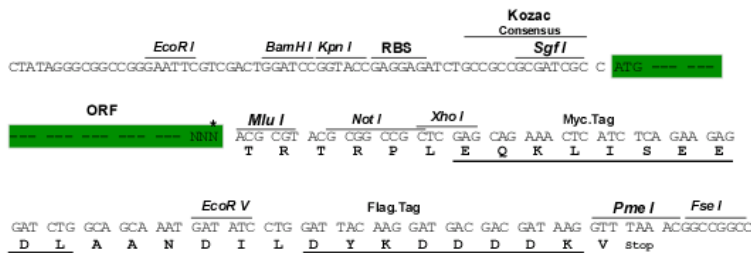
TRTRPLEQKLISEEDLAANDILDYKDDDDKV

Chromatograms: https://cdn.origene.com/chromatograms/mm9040_d01.zip

Restriction Sites: SgfI-MluI

Cloning Scheme:

Cloning sites used for ORF Shuttling:



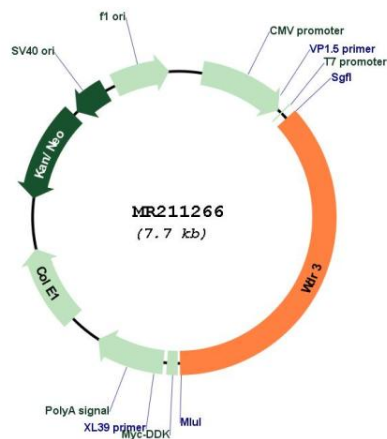
* The last codon before the Stop codon of the ORF

ACCN: NM_175552

ORF Size: 2826 bp

OTI Disclaimer:	The molecular sequence of this clone aligns with the gene accession number as a point of reference only. However, individual transcript sequences of the same gene can differ through naturally occurring variations (e.g. polymorphisms), each with its own valid existence. This clone is substantially in agreement with the reference, but a complete review of all prevailing variants is recommended prior to use. More info
OTI Annotation:	This clone was engineered to express the complete ORF with an expression tag. Expression varies depending on the nature of the gene.
Components:	The ORF clone is ion-exchange column purified and shipped in a 2D barcoded Matrix tube containing 10ug of transfection-ready, dried plasmid DNA (reconstitute with 100 ul of water).
Reconstitution Method:	<ol style="list-style-type: none"> 1. Centrifuge at 5,000xg for 5min. 2. Carefully open the tube and add 100ul of sterile water to dissolve the DNA. 3. Close the tube and incubate for 10 minutes at room temperature. 4. Briefly vortex the tube and then do a quick spin (less than 5000xg) to concentrate the liquid at the bottom. 5. Store the suspended plasmid at -20°C. The DNA is stable for at least one year from date of shipping when stored at -20°C.
RefSeq:	NM_175552.5
RefSeq Size:	3440 bp
RefSeq ORF:	2829 bp
Locus ID:	269470
UniProt ID:	Q8BHB4
Cytogenetics:	3 F2.2
MW:	106.2 kDa

Product images:



Circular map for MR211266