

Product datasheet for **MR211265**

Morc3 (NM_001045529) Mouse Tagged ORF Clone

Product data:

Product Type:	Expression Plasmids
Product Name:	Morc3 (NM_001045529) Mouse Tagged ORF Clone
Tag:	Myc-DDK
Symbol:	Morc3
Synonyms:	1110051N18Rik; AI452146; BF318192; D16Jhu32e; NXP2; Zcwcc3
Mammalian Cell Selection:	Neomycin
Vector:	pCMV6-Entry (PS100001)
E. coli Selection:	Kanamycin (25 ug/mL)



[View online »](#)

ORF Nucleotide Sequence:

>MR211265 representing NM_001045529
 Red=Cloning site Blue=ORF Green=Tags(s)

TTTTGTAATACGACTCACTATAGGGCGGCCGGAATTCGTGACTGGATCCGGTACCGAGGAGATCTGCC
 GCC**CGGATCGCC**

ATGGCGGCGCAGCCACCCACCGGATCCGCTCAGCGCGCTTTGCCGAAGTTTTACATACAAATTCTA
 CTAGTCATACCTGGCCGTTCAAGTGCAGTTGCTGAGTTAATAGATAATGCTTATGATCCTGATGTGAATGC
 TAAACAGATCTGGATCGATAAAACAGTGATTAGTGACCATATATGCTTGACATCACTGATAATGGCAAC
 GGGATGACAGCAGATAAGTTACATAAAATGCTAAGCTTTGGCTTCAGTGACAAAGTACCATGAATGGTC
 ATGTCCCAGTTGGATTGTACGGGAATGGCTTCAAGTCAAGTCTATGCGACTGGGCAAAGATGCAATGGT
 TTTTACAAAAATGGAGAAACCATGAGTGTGGCTTCTGTCTCAGACCTACCTGGAAAGTCATAAAGGCG
 GAGCACGTTGTTGCCGATCGTGACGTTCAACAAACACCGTCAGATGATTAATTAACAGAATCAAAG
 CAAGCCTAGCAGCAATTCTGGAACATTCTGTTTTCTACGGAACAGAAATTAAGTGCAGAACTCAATGC
 TATCATGGGTAAAGAGGGGACAAGAATCATCATTGGAATCTCAGAAGTTACAAAAATGCAACAGAATTT
 GATTTTAAAAGGATAAATACGACATCAGAATTCCTGAGGATTTAGATGAGACTGCAGGGAGGAAAGGGT
 ACAAGAAACAAGAAAGATGGACCAATGGCCCTGAGAGTGACTATTCCTTAAGGGCTTACTGCAGCAT
 TTTATACCTTAAACCAAGAATGCAGATCATACGTTGACAGAAAGTGAAGACACAAGTACTTTCAAAG
 AGTCTTGCCCTACATTGAACGTGATGTTACCGACCTAAATTTTTAACTAGAACAGTGAGAATTACTTTTG
 GATTAAGTGCAGAAATAAGATCACTATGGGATAATGATGTATCACAAAAACAGACTCATCAAGGCTTA
 TGAAAAAGTAGGATGTCAGTTAAAGGCAAAACATGGGTGTTGGAGTGGTTGGAATTAAGAATGTAAT
 TTCCTTAAGCCAACCTATAATAAGCAAGATTTGACTACACTAATGAGTACAGGCTTACGATCTAGCAC
 TAGGAGAAAAAGCTGAATGATTATTGGAATGAAATGAAAGTGAAGAAAAAATGCAGAAATATCCTGTAACCT
 GCCAGTCGAAGACATACAGAAGCGTCTGATCAGACATGGGTTCATGTGACGCTTGTCTAAAGTGGCGA
 AAGTTACCAGATGGGATAGATCAGCTTCCAGAAAAATGGTATTGCTCCAATAACCCCTGACCCACAGTTCA
 GAAACTGTGAAGTCCGGAAGAACCTGAAGATGAGGATTTAGTGCATCCTACTTATGAGAAAACTATAA
 AAAGACGAGCAAGGAGAGATTCAAGATCAGACAACCGAAATCCTCCCTCGAATCCTCCCTCAGATTAAC
 CCTGAGCTATTGTATCAGACAAGTGTTCAGTCAAGTCTCCTCCCTGTGAAGGAGAGCGTTCCAAGAC
 CACATCTTTCTGAAGTCAAGTCCCTTGCAGCAAGGATTATAAATCTCAACCTTGCTTACCAGCGTC
 TGAACCTGAGAACAGTAGCATGAAGCGGAACTGGTGTCACTCATCAATCTGAATGCAAGACTCGG
 AGATTAAGTAATCCTCCAGTTGAAAATTCATCTTACAAAAATGATGATGATGAAGATGCATCATTTTAG
 AAGAAAAATAGTACCCCAAGCCTGCAGTAGATCTTGAAGTTAAATCAGATATTGAAGTCAAGTCAAGACA
 GAGCCACACTGAGCAGAGCGGCATTATGTTGACCTTGAAGCAGTCTAAGCCTTGTGTCCAGGCCAGT
 TCCACAAGCACTCCACCTCCAGGAGTGACCCAGGCATTACGGTCTCCTCAGACCGATGCACCAGGCC
 TGACCGTGAAAAAGGAAGAAAGTATGGAAGAGGACATGGGTGTGAGGAACGGCACAGCCACCCTGTCCCTG
 TGTCCGTAAGTGAAGTGCAGGAGACCTCGGCTGAGTCCGTTAGATGCCACTAGCCATCAGTTACAA
 GAAGTGAAGTGAAGTGCCTGTAGTACACAAGAAAGAGATGATTACAAGAGACAGTCCAGATGTTTA
 CTGATCAGATACAGGTGTTACAGCAAAGACTATTGGAGATGAACGACAAGTCCGTTGAAGAGGAGAAGTG
 CCACAGTCTACTGAAACTGACGAGTGTCTACTTACAGTGTAAACGGTCAAGTGCAGGCTGAGAGCCTGGAC
 CACTTGGGGTCTCAGTACCAGCAAGCACTGCAGGAGATAGAAAGGCTGAAGAGACAGTGCAGCGCGCTGC
 AGCAGGTGAAGAGTGAAGTGCAGCCAGGCTTCTGCACTGAGAGCAAAAGCGAGGTGGACGAGATGGCCGT
 GCAGCTTGATGATGTGTTCAAGCAGCTGGACAAGTGCACCATTGAGAGGGACCAGTACAAGAACGAGGTT
 CAGTTGTTGAAAATAGAGAAGTACACATTCATTCTCAGTGTGAAGAGCTGCAGACTGAAGTGGAGCAGC
 TGAAGTCCACAGGCCAACAGGCAGCGGCCGATGGGTCCACTGCAAGCAATGCCGAGGAGCCTGTCAGTTA
 TGTGGACGGGAAAGCCTCAAATTCGTTCTCTTCGAGTCAACGTAGGACAGCTGCTGGCTATGATCGTG
 CCTGATCTGGATCTTCAAGCAGTCAATTATGACGTGGACGTAGTCGATGAGATTTAGGACAAGTGGTGG
 AGCAGATGAGCGAGATCAGCAGTACT

ACGCGTACGCGGCCGCTCGAGCAGAAACTCATCTCAGAAGAGGATCTGGCAGCAAATGATATCCTGGATT
 ACAAGGATGACGACGATAAGGTTTAA

Protein Sequence: >MR211265 representing NM_001045529
 Red=Cloning site Green=Tags(s)

MAAQPTGIRLSALCPKFLHTNSTSHTWPFSAVAELIDNAYDPDVNAKQIWIWIDKTVISDHICLTFDTNGN
 GMTADKLHKMLSGFSDKVTMNGHVPLVGLYGNFGKSGSMRLGKDAMVFTKNGETMSVGFLSQTYLEVIKA
 EHVVPVIVTFNKHQMINL TESKASLAAIL EHS LF STEQKLLAELNAIMGKKGTRIIWNLRSYKNATEF
 DFEKDKYDIRIPEDLDETAGRKG YKKQERMDQIAPESDYS LRAYCSILY LKPRMQIIIRGQKVK TQLVSK
 SLAYIERDVYRPKFLTRTVRITFGFNCRNKDHYGIMMYHKNRLIKAYEKVGCQLKANNMGVGVVGIIECN
 FLKPTHNKQDFDYTNEYRLTILALGEKLN DYWNEMKVKKNAEYPVNL PVEDIQKRPDQTWVQCDA CLKWR
 KLPDGIDQLPEKWYCSNNPDPQFRNCEVPEEPEDEDLVHPTYEKTYKTSKERFRIRQPEILPRILPQIN
 PELL YQTSVSSQSFSPVKESVPRPHLSEVTS PFAARIINLNLASPASEPENSSMKRKLGVHSSILNAKTR
 RLSNPPVENSSYKNDDEDV IILEENSTPKPAVDLEVKSDIEVKSEQSHTEQSGIHVDLVSSPKPCVQAS
 STSTSTSRSDPGITVSTQTDAPGLTVKKEESMEEDMGVRNGTATLSCVGT EAKVQETS AESVDATSHQLQ
 ELRSELLVVTQERDDYKRQ CQMF TDQIQV LQQRLLEMNDKCVKKEKCHQSTETDAVFL LDSVNGQAESLD
 HLG SQYQQALQEIERLKRQCSALQQVKSECSQASCTESKSEVDEMAVQLDDVFRQLDKCTIERDQYKNEV
 QLLEIEKSHIHSQCEELQTEVEQLKSTGQQAADGSTASNAEEPVS YVDGESLKLRLRVN VQLLAMIV
 PDLDLQQVNYD VDVVDEILGQVVEQMSEISS T

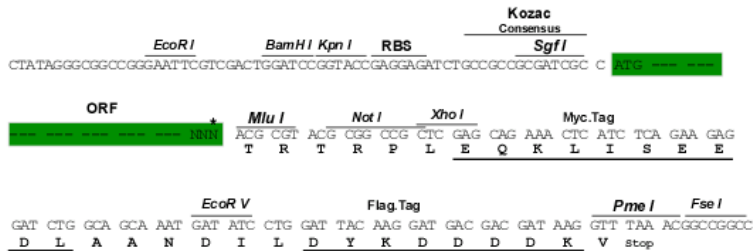
TRTRPLEQKLISEEDLAANDILDYKDDDDKV

Chromatograms: https://cdn.origene.com/chromatograms/mm9040_c12.zip

Restriction Sites: SgfI-MluI

Cloning Scheme:

Cloning sites used for ORF Shuttling:



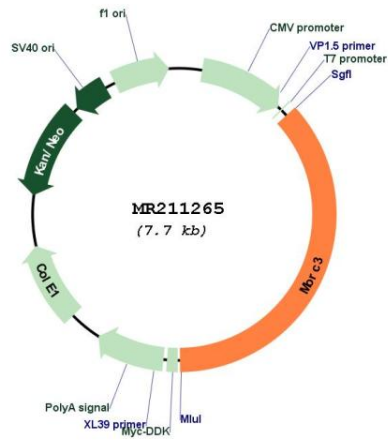
* The last codon before the Stop codon of the ORF

ACCN: NM_001045529

ORF Size: 2826 bp

OTI Disclaimer:	The molecular sequence of this clone aligns with the gene accession number as a point of reference only. However, individual transcript sequences of the same gene can differ through naturally occurring variations (e.g. polymorphisms), each with its own valid existence. This clone is substantially in agreement with the reference, but a complete review of all prevailing variants is recommended prior to use. More info
OTI Annotation:	This clone was engineered to express the complete ORF with an expression tag. Expression varies depending on the nature of the gene.
Components:	The ORF clone is ion-exchange column purified and shipped in a 2D barcoded Matrix tube containing 10ug of transfection-ready, dried plasmid DNA (reconstitute with 100 ul of water).
Reconstitution Method:	<ol style="list-style-type: none">1. Centrifuge at 5,000xg for 5min.2. Carefully open the tube and add 100ul of sterile water to dissolve the DNA.3. Close the tube and incubate for 10 minutes at room temperature.4. Briefly vortex the tube and then do a quick spin (less than 5000xg) to concentrate the liquid at the bottom.5. Store the suspended plasmid at -20°C. The DNA is stable for at least one year from date of shipping when stored at -20°C.
RefSeq:	NM_001045529.3 , NP_001038994.2
RefSeq Size:	4237 bp
RefSeq ORF:	2829 bp
Locus ID:	338467
UniProt ID:	F7BJB9
Cytogenetics:	16 C4
MW:	107 kDa
Gene Summary:	Nuclear factor which forms MORC3-NBs (nuclear bodies) via an ATP-dependent mechanism (By similarity). Sumoylated MORC3-NBs can also associate with PML-NBs (By similarity). Recruits TP53 and SP100 to PML-NBs, thus regulating TP53 activity (PubMed:17332504). Binds RNA in vitro (By similarity).[UniProtKB/Swiss-Prot Function]

Product images:



Circular map for MR211265