

Product datasheet for **MR211252**

Snx14 (NM_172926) Mouse Tagged ORF Clone

Product data:

Product Type:	Expression Plasmids
Product Name:	Snx14 (NM_172926) Mouse Tagged ORF Clone
Tag:	Myc-DDK
Symbol:	Snx14
Synonyms:	B830022K16; C330035N22Rik; YR-14
Mammalian Cell Selection:	Neomycin
Vector:	pCMV6-Entry (PS100001)
E. coli Selection:	Kanamycin (25 ug/mL)



[View online »](#)

ORF Nucleotide Sequence:

>MR211252 representing NM_172926
 Red=Cloning site Blue=ORF Green=Tags(s)

TTTTGTAATACGACTCACTATAGGGCGGCCGGGAATTCGTCGACTGGATCCGGTACCGAGGAGATCTGCC
 GCC**CGCATCGCC**

ATGTGGCTCCGCCCGGGGTTGGGGTGCCTCCGCCTCTGCCTCTGAGGGCGGCACGTCTCCCTG
 CGTGACTGAGATGGGGTCTGGGTGCGGACGATCTGCGGGAGGCTGAAGCAGCGCTGCGGCTGGACGT
 GGGGCGGAGATTTGCCGTAGTATCCGCTGTTCTGCTTCTGCTGCTCTGCCTCAGCGTCGCTCGCTG
 CTCCTCAACAGGTATCTGCATGTCTTAATGATCTTCTGGTCTGTTGTTGCTGGAGTTGTGACATTCTACT
 GTTCATTAGGACCGATTCCCTCTTACCAATATATTCTTCACAATAAAATACAAACCAAGCAATTAGG
 ACTTCAAGAGTTATTTCCGCAAGGACATAGCTGTGCTGTTTGGTAAAGTAAAGTAAACGGCATAGG
 CCTTCTTGCTCCTTGAACACTATCAGCCCTGGCTAGACCTGAAAGTTTCTTGAAGGTAGATGCATCTC
 TCTCAGAGTTCTTGAATTAGTGTGGAAACTTTGTCTATCCATGGTACAGGGATGTGACGGATGATGA
 GTCCTTTGTTGATGAGCTGAGGATCACCTTACGGTTTTTGCATCTGCTTGGTGGGAAGAAATCACAAG
 GTGGATATTCCATCTATTATAACCAAGAACTATTAAGCAGCAATGAAACATATAGAAGTGATTGTTA
 AAGCAAGACAGAAAGTAAAGAACACGGAGTATTTACAACAAGCCGCTTTAGAAGAATATGGTCCAGAGCT
 TCATGTGGCCCTGAGAAGTGAAGAGATGAATTACAGTATTTAAGGAAGCTTACTGAGTTACTTTTTCT
 TATATTTTGCCTCCTAAAGCAACAGACTGCAGGTCCTGACATTACTCATAAGAGAGATTCTGTCTGGTT
 CTGTGCTTCTTCTTCTTTGGATTTCTAGCTGATCCAGATACTGTCAATCATTGCTTATCATCTTCAT
 AGACGACAGCCCTCCTGAAAAGCAACTGAACCAGCTTCCCTTTGGTCCATTCTGCAGAAATTTGCA
 GAACCTAGAAAATAAAAGCCATCCGTGCTGAAGTTAGAGCTGAAACAAATCAGAGAACAGCAGACCTTT
 GTTCCGCTTTATGAACCTCTGAAACAAGAAGGGCCGTGCACGCTCTGCAGTTCTGTGACAGTCGA
 GGAATTTAATGATAGAATTTTGGCTCCAGAGTTATCAAATGATGAAATGCTATCTCTCCATGAAGAATTG
 CAGAAGATTTATAAGACCTACTGCTGGATGAAAGCATTGACAAAATTCGCTTGTATCCCTTCATTGTGCG
 AAGAGATTCAAAGAATTGCTGAAGGCCATACATAGATGTTGTGAAGCTGCAAATATGAGGTGTCTTTT
 TGAAGCATATGAGCACGTCCTTCCCTGTTGGAGAAGCTGTTTACCCCATGTTCTGCCACAGTATGAG
 TATTTTAGGCAACTTTAAGAGGTGAGAATCGCCACACGCAATTCCAAATTAACAGAAGCACACAAA
 AAAGAGGAGAATCGTTTGAATCAGCAGAATAGGTAGCAAATTAAGGGCGTATCAAGAGTACGACAA
 GGAGGAGCTGTGCTGCCTAATTACGGGTGGCTGAAGGCGAAGATGACTTTATTGAAGAAGGGATTGTG
 GTAATGGAGGATGACTCTCCAGTAGAAGCTGTGAGCACACCTAACACTCCTCGAAACCTTGTGCTGGA
 AAATTAGCATTCCGTATGTAGACTTTTTGAAGATCCCTCCTCTGAAAGGAAAGAGAAGAAGGAGAGAAT
 TCCTGTGTTTTGTATCGATGTTGAAAGAAACGACAGACGAGCAGTTGGACACGAGCTGAGCATTGGTCT
 GTCTATAGAAGATATCTTGAATTCTATGTTCTTGAATCAAACCTAACAGAATTTTCATGGCACATTTCTG
 ATGCTCAGCTTCCATCCAAAAGGATCATTTGGCCCCAAAACCTATGAGTTTTTGAAGTGAAGAGAGAGGA
 GTTCCAGGAGTATCTGCAGAACTTGTGACGACCCGGAGCTGAGTAACAGCCAGCTTCTGGCTGACTTT
 CTCTCCCCAACGGTGGGAGACACAGTTTCTAGATAAGATACTTCCAGATGTAATCTTGGAAAAATTA
 TAAAGTCTGTTCTGGGAACTAATGAAAGAGAAAGGTCAGCATTGGAGCCATTTCATGAGTTTCAT
 TAATTCTTGCGAATCTCCAAACCTAAACCGAGTCGGCCAGAATGACGATTCTCAGCCCCACTTCCGAA
 AACAAACAAGAAGCTTTTCAACGATCTGTTTAAAGAATAATGCAAACCGCGCTGAGAACACAGAGCGAAAGC
 AAAATCAGAACTACTTATGGAGGTGATGACTGTGGACGGAGTCTATGATTACCTGATGTATGTAGGGCG
 AGTAGTTTTTCAAGTCCCAGACTGGCTTCATCTTCTAATGGGAACTCGAATCCTCTTTAAGAACC
 CTGAAAATGTACACAGACTACTCTCCAGTGAAGCTGGAGCAGCTGTTTCAGGAGCACCAGCTGGTCT
 CCCTCATACCCTTCTCAGAGATGCTATATTTGTGAAAATACTGAACCTCGCTCTCTCCAAGATAAGCA
 AAAAGGAGCAAAACAGACTTTTGAAGAAATGATGAATTACATTCCAGATCTGATAGTCAAGTGTATCGGT
 GAAGAAACCAAGTACGAAAGCATCAGACTCCTGTTTGTGGCCTGCAGCAGCCAGTGCTCAACAAGCAGC
 TGACCTATGTGTTGCTGGACATTGTGATACAGGAGCTGTTTCCAGAGCTAAATAAGGTACAAAAGGAAGC
 TACCTCCATGACATCCTGGATG

ACGCGTACGCGGCCGCTCGAGCAGAACTCATCTCAGAAGAGGATCTGGCAGCAAATGATATCCTGGATT
 ACAAGGATGACGACGATAAGGTTTAA

Protein Sequence: >MR211252 representing NM_172926
 Red=Cloning site Green=Tags(s)

MWLRRRGLGVPSASASEGGTSSPAWTEMGSWVRTICGRLKQRLRLDVGREICRQYPLFCFLLLCLSVASL
 LLNRYLHVLMIWFSFVAGVVTFCYSLGPDLLPNIFFTIKYKPKQLGLQELFPQGHSCAVCGKVKCKRHR
 PSLLENYQPWLDLKVSSKVDASLSEVLELVLENFVYPWYRDVTDDESFDLRLITLRFASVLRRIHK
 VDIPSIITKLLKAAMKHIEVIVKARQKVNTEYLQQAAL E EYGP E L H V A L R S R R D E L Q Y L R K L T E L L F P
 Y I L P P K A T D C R S L T L L I R E I L S G S V L L P S L D F L A D P D T V N H L L I I F I D D S P P E K A T E P A S P L V P F L Q K F A
 E P R N K K P S V L K L E L K Q I R E Q Q D L L F R F M N F L K Q E G A V H V L Q F C L T V E E F N D R I L R P E L S N D E M L S L H E E L
 Q K I Y K T Y C L D E S I D K I R F D P F I V E E I Q R I A E G P Y I D V V K L Q T M R C L F E A Y E H V L S L L E N V F T P M F C H S D E
 Y F R Q L L R G A E S P T R N S K F N R S T Q K R G E S F G I S R I G S K I K G V F K S T T M E G A V L P N Y G V A E G E D D F I E E G I V
 V M E D D S P V E A V S T P N T P R N L A A W K I S I P Y V D F F E D P S S E R K E K K E R I P V F C I D V E R N D R R A V G H E P E H W S
 V Y R R Y L E F Y V L E S K L T E F H G T F P D A Q L P S K R I I G P K N Y E F L K S K R E E F Q E Y L Q K L V Q H P E L S N S Q L L A D F
 L S P N G G E T Q F L D K I L P D V N L G K I I K S V P G K L M K E K G Q H L E P F I M S F I N S C E S P K P K S R P E L T I L S P T S E
 N N K K L F N D L F K N N A N R A E N T E R K Q N Q N Y F M E V M T V D G V Y D Y L M Y V G R V V F Q V P D W L H H L L M G T R I L F K N T
 L E M Y T D Y Y L Q C K L E Q L F Q E H R L V S L I T L L R D A I F C E N T E P R S L Q D K Q K G A K Q T F E E M M N Y I P D L I V K C I G
 E E T K Y E S I R L L F D G L Q Q P V L N K Q L T Y V L L D I V I Q E L F P E L N K V Q K E A T S M T S W M

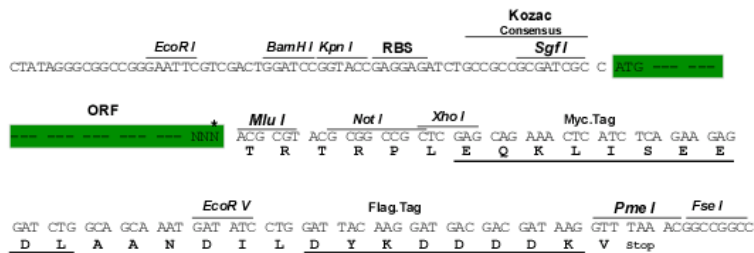
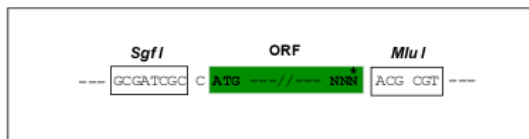
TRTRPLEQKLISEEDLAANDILDYKDDDDKV

Chromatograms: https://cdn.origene.com/chromatograms/mm9012_c08.zip

Restriction Sites: SgfI-MluI

Cloning Scheme:

Cloning sites used for ORF Shuttling:



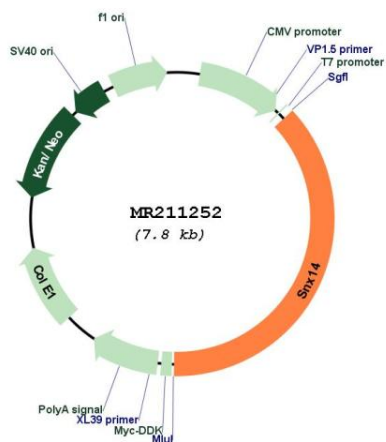
* The last codon before the Stop codon of the ORF

ACCN: NM_172926

ORF Size: 2892 bp

OTI Disclaimer:	The molecular sequence of this clone aligns with the gene accession number as a point of reference only. However, individual transcript sequences of the same gene can differ through naturally occurring variations (e.g. polymorphisms), each with its own valid existence. This clone is substantially in agreement with the reference, but a complete review of all prevailing variants is recommended prior to use. More info
OTI Annotation:	This clone was engineered to express the complete ORF with an expression tag. Expression varies depending on the nature of the gene.
Components:	The ORF clone is ion-exchange column purified and shipped in a 2D barcoded Matrix tube containing 10ug of transfection-ready, dried plasmid DNA (reconstitute with 100 ul of water).
Reconstitution Method:	<ol style="list-style-type: none"> 1. Centrifuge at 5,000xg for 5min. 2. Carefully open the tube and add 100ul of sterile water to dissolve the DNA. 3. Close the tube and incubate for 10 minutes at room temperature. 4. Briefly vortex the tube and then do a quick spin (less than 5000xg) to concentrate the liquid at the bottom. 5. Store the suspended plasmid at -20°C. The DNA is stable for at least one year from date of shipping when stored at -20°C.
RefSeq:	NM_172926.3 , NP_766514.2
RefSeq Size:	3112 bp
RefSeq ORF:	2895 bp
Locus ID:	244962
UniProt ID:	Q8BHY8
Cytogenetics:	9 E3.1
MW:	112.3 kDa
Gene Summary:	Plays a role in maintaining normal neuronal excitability and synaptic transmission. May be involved in several stages of intracellular trafficking (PubMed:24859318). Required for autophagosome clearance, possibly by mediating the fusion of lysosomes with autophagosomes. Binds phosphatidylinositol 3,5-bisphosphate (PtdIns(3,5)P2), a key component of late endosomes/lysosomes. Does not bind phosphatidylinositol 3-phosphate (PtdIns(3P)) (By similarity).[UniProtKB/Swiss-Prot Function]

Product images:



Circular map for MR211252