

Product datasheet for **MR211241**

Rsf1 (BC085127) Mouse Tagged ORF Clone

Product data:

Product Type:	Expression Plasmids
Product Name:	Rsf1 (BC085127) Mouse Tagged ORF Clone
Tag:	Myc-DDK
Symbol:	Rsf1
Synonyms:	XAP8, p325
Vector:	pCMV6-Entry (PS100001)
E. coli Selection:	Kanamycin (25 ug/mL)
Cell Selection:	Neomycin



[View online »](#)

ORF Nucleotide Sequence:

>MR211241 representing BC085127
 Red=Cloning site Blue=ORF Green=Tags(s)

TTTTGTAATACGACTCACTATAGGGCGGCCGGGAATTCGTCGACTGGATCCGGTACCGAGGAGATCTGCC
 GCC**GCGATCGCC**

ATGGCTCTCCGGGCTGCCCGGTTCTGTGCCCAACTTCGCCGTAGTCTGCTCCTTCTTGAACGCTACG
 GGCCGCTGCTGGACCTGCCCGAGTTGCCGTTCCAGAGCTGGAGCGGGTCTGCAGGCGCCGCCAGCA
 CATCGGCAACGGAGAAGTACAAAAAATTTGGTGGAGCTGCATTTGAAGTTAATGAGGAAGATTGGCAAA
 TCCGTTACAGCAGACAGATGGGAAAAACTTTGATCAAGATCTGTCAAGAGTTTAAACAGTACCTGGGCAT
 GGGAGATGGAGAAGAAAGGCTATCTTGAATGAGTGTGAATGCAAACTAGCACTCTTAAAGTATCTCTG
 TGAGTGTCAAGTTGATGACAATCTTAAATCAAGAATATAATTAATGAGGAGGATGCTGATACTATGCGT
 CTCAGCAATTTGGCGAGACAAAGATGGCCTCATGTATTGGTACCAGTTGGATCAAGACCATAATGTGA
 GAATGTACATAGAAGAACAAGATGATCAAGATGGCTCTTCTTGGAAATGCATTGCAGAAATCGAAACGA
 GTTGGCTGAGACTCTTGCCTCTGAAAGCACAATTTGATCCTGTCTATTGAAAACTCGAGCCAAACAG
 GAAGATCTTCTCGGGAAAGCCCACTAGAGGATGAGGAGACTAAGAAAGATGAAGAAACACCTAAAC
 AAGAAGCATCAAAAGAAAATGAAAAGACAGGAGCTGATGAGCGGTCAAGTGGATTCTGGGAAAGTGTCTGC
 AGCCAGCGCTCTAGAAGAACCAGCTGTGAAAAGTGAAGAAAGCAGATGAAAAGGAGCTTGGCAAACTGCCA
 GTCATTGTAAAGCTAGAAAAGCCTTTGCCAGAACTGAGGAAAAAAGATTATCAGAGAGGAAAAGTGATT
 CTTTCAAGGAAAATGTCAAACCCATTAAAGTAGAAGCAAAGGAATGCAGAGCGGACCCAAAAGATCTCAA
 AGGCAGCTTGGAGCGGCTGGGCTCGCAGGAGCCTGAGCGAGCCGACTTTGGTAGCAACATCAAATCTCAA
 GACATCATAGAGAAAATCTACTGAGGAAACAGAGAAGCTTAAAAATGATCAGCAAGCCAAGTACCCTGA
 AGAAACGTGAAATTAAGTGTGATGATTTTGGACAGTCCAGTCAAAGGACCTTTGTGTAAAGTCAAGTAC
 TCCAATCAAGAAAGTTTTGAAAGATGACATAAAACAAGAGGAAGAGACTTGTAAACGGGTCTCTACCATC
 AGTGCTTTGAGTCATGAAGGAAACAATTTGTGAATGGAGAGATTAATGATGACAAGGTAATTTCAAAT
 TTAAGACAGAACAATGGAAATACAGCTTTGTGATACAAAAGAAGATAGTGTAGCATCCCTGCTAAGGA
 TGGAAATGCCTGCATGGAGGAAATGGTACGGAGTGCTTAAATCTGTCTAACCAGCACAAAGACAAGT
 GAGCTTGAGAAAGAGGCCCTCTAGGGAAGGATAGACAGCTCTGTACCTGACATAGAGAGCCTCAGTC
 AGAAAGCAAGGTTAGAGGAGCCTGGGCTTCTGAACATGGACATGCCTCTCGAACCTTCTGAGAAAGCCAC
 GGATCTCTCTTTAAAACCCACTTTGTCTGCCACAGAACCCTGCAGTACGAAAAGTTGAAGAGAAGGCCCCC
 AGAAGTAAAGAGTGAAGAACACACCCAGGCATAGAATGCCTGGAAGGGTGGAGAAGCCAGAAGACCT
 CCATTGATAAGGACATCCAAAATTTGAGTCCAATACCAGAAGAAGTTGTAAAGGGTGTCTAGAGTCAGA
 AAAGTCAGGTCCTTGTGAAGTGGCTGAAACTCCTCTCCACTCTCGATGGCTGGGGCCAAGGAGAAACAG
 ACCTCAGAAAAAAGGATGTAGACTGTAGTAGAGGTTGAGTGAAGTCAAGTCCCTTGAAGTGAAGCC
 CAGAAATCTAAAAGAGGATTCTGAGTCTCGAGGGAGGAAGTGGCCAACTGGACAATGCCAGACCTC
 TGGCATGGAGGATACTTCTGAAACAAAGGGCTCTGTGCAGAAAAACAATTTAAATATAAGTTAGTTTCT
 GAAAGAAACAGTACTGCTTCAGAAAACACTGAGATCACCTCTGAAAGGAAGAAGGAAGGCATCAAGTTGA
 CAATTAGGATATCAAGTCGGAAGAAGAAGCCAGATTGCCCCCACAACTGTAGACTCAGAAAGCAAGGA
 AGAGAAGGCGGGCAAGGAAGAAGAGAAAGCAAGTGTGGTCAACTTTAAGAAGTCTCCAAGAATATCT
 AGACCCACAGCAAAAGTCTGATGAGATCAGAGTCCAGAAAGCCGATAAGAGAAGAGCTGACGGAGAAGATG
 GAGTGAAGGGGAGCCGATCTTTGCAACAGCAGACAAGAAGGATCACTTGAAGAAAGCAGAGAAGGA
 TACAAATCTAAAGCAAGCAAGGTAACCCAAAGGCAAGTTGATGGACTGGCTCTCGGACACGAGGC
 AGGTGGAATACTCCAGCAATGACGAAAGTGAAGGATCCGAGAGTGAACAATCTCTGCAGCCTTGAAG
 AGGAGGAAGGAAGGTAAGGTAAGGAGCGGCTTCCAGATGACGATGAACCTTGCAAAAAGTGTGGCCT
 TCCGAACCATCCAGAATAATTCTTGTGTGATTCTTGCAGAGTGGATACCATACTGCCTGCCTCCG
 CCTCCGCTGATGATTATCCCTGATGGAGAATGGTCTGCCCTCCTTGCCAACATGTACGACCCCAAGCC

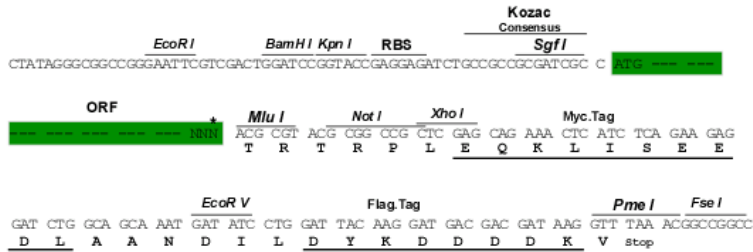
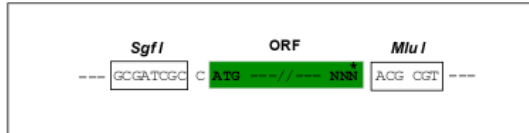
ACGCGTACGCGGCGCTCGAGCAGAACTCATCTCAGAAGAGGATCTGGCAGCAAATGATATCCTGGATT
 ACAAGGATGACGACGATAAAGTTTAA

Restriction Sites:

SgfI-MluI

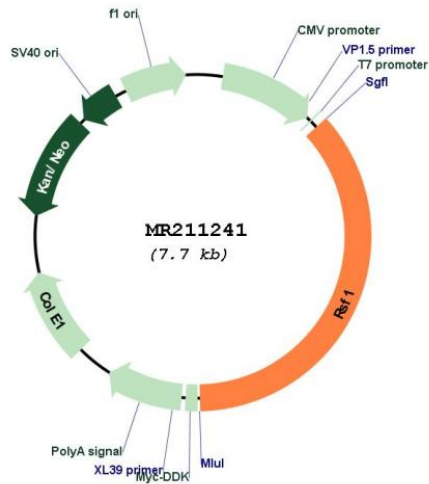
Cloning Scheme:

Cloning sites used for ORF Shuttling:



* The last codon before the Stop codon of the ORF

Plasmid Map:



ACCN: BC085127

ORF Size: 2799 bp

OTI Disclaimer:	The molecular sequence of this clone aligns with the gene accession number as a point of reference only. However, individual transcript sequences of the same gene can differ through naturally occurring variations (e.g. polymorphisms), each with its own valid existence. This clone is substantially in agreement with the reference, but a complete review of all prevailing variants is recommended prior to use. More info
OTI Annotation:	This clone was engineered to express the complete ORF with an expression tag. Expression varies depending on the nature of the gene.
Components:	The ORF clone is ion-exchange column purified and shipped in a 2D barcoded Matrix tube containing 10ug of transfection-ready, dried plasmid DNA (reconstitute with 100 ul of water).
Reconstitution Method:	<ol style="list-style-type: none"> 1. Centrifuge at 5,000xg for 5min. 2. Carefully open the tube and add 100ul of sterile water to dissolve the DNA. 3. Close the tube and incubate for 10 minutes at room temperature. 4. Briefly vortex the tube and then do a quick spin (less than 5000xg) to concentrate the liquid at the bottom. 5. Store the suspended plasmid at -20°C. The DNA is stable for at least one year from date of shipping when stored at -20°C.
RefSeq:	BC085127
RefSeq Size:	5772 bp
RefSeq ORF:	2801 bp
Locus ID:	233532
Cytogenetics:	7 E1
MW:	211.6 kDa