

Product datasheet for **MR211237**

Gprin1 (NM_012014) Mouse Tagged ORF Clone

Product data:

Product Type:	Expression Plasmids
Product Name:	Gprin1 (NM_012014) Mouse Tagged ORF Clone
Tag:	Myc-DDK
Symbol:	Gprin1
Synonyms:	GRIN1; Z16
Mammalian Cell Selection:	Neomycin
Vector:	pCMV6-Entry (PS100001)
E. coli Selection:	Kanamycin (25 ug/mL)



[View online »](#)

ORF Nucleotide Sequence:

>MR211237 representing NM_012014
 Red=Cloning site Blue=ORF Green=Tags(s)

TTTTGTAATACGACTCACTATAGGGCGGCCGGGAATTCGTCGACTGGATCCGGTACCGAGGAGATCTGCC
 GCC**CGGATCGCC**

ATGAGGGACTGCTGCTCCTCTCCAAAGGCCATCCCTGCACCCCAAGGCACGCCCTGGACCAGAGTTTAG
 GCATGGACCCAGACACACCAGTTCCAGTGGGGCTGCGGAAGGGCCCTCTGTTCTGAGAGGCCCTGCTGG
 GAGCTTAGCCTGCCCTTCTCCTAACTGCAGCCCTCTCCAGAGACACCGAGGGACACATGGAGCCTTGACC
 TCAGACAACCTCTGGAACGACTTTGTTTGGGAAGCCAGAGCCCATGTCCTCAGCAGAAGCCACTCCCACAG
 CCTCAGAGATCAGAAATCCTGTGTTCTCGGGGAAGATGGATGGCAACTCCCTGAAGCAGGCAGACTCCAC
 TTCCACACGAAAGGAAGAGGCTGGTCTTGGGAATGAAGAGTCCATGTTGAAGGAAAAGGCAGAGCCT
 ATGATCTATGGAAGGGGGAGCCTGGGACGGTAGGAAGAGTGGACTGCACAGCTTCAGGGGCGGAGAATT
 CTGGGCTCTTGGGAAAAGTAGACATGCCATGTTCCAGCAAAGTGGATATAGTGTCCCAGGAGGAGACAA
 TGCTGGGTCTTTAAGAAAGGTAGAGACTATATCCTCAGGCAAAATGGATCCAAAAACAGAGAATGTCATG
 CATTCCAGAAGAGAGCGCCCTGGATCCACAGGAGAGGGAGATCTTGTGTCTTTGAGGGAAAATGATATGA
 AACCCCGGACAAACAGATTCTGCCTCCAAAAAAGACAGACCCTGAGTTCTCTGAAAAGCTAACTCC
 AGGATCGTCAGGCAAGACAGAGCTTGTATCCTCAGTAAGTGTGGCTCCTGTGACCTCTGAAAATGTGAAT
 CCTGTATGCTCGGGGGAGCAGGTCTCGAGCTGTGGGCAATTCAGAACTTTGTCTCAGTCAAGAAGG
 ACCCTCAGTTGCTTGGAAAGAAAGAGGCTGTCTCCTCAGGAGAAGGTGGGTCTGTATCGGTGAGAATGGC
 AGAAACAGTGTCTGCCAGACAGCCAGAAGGTAAGTTCCAGCAAAGACAGATTCTACATCTTCCAACAGT
 ACAGGACCTTCAGGCAGAGCGGACCCTGTTTCCCTAAGAAATTCAGAACTTGTGTCCCAGTGAACCCAG
 AAGCTTGTCTCTGGGACGGCAGAACCGGTGTCTTGGTAAAAACAGAAACATATCCTCAGGAAAAGA
 AGATCCAAAGGTCTCTAGAAGGGTGGATCACACGACTGTACAGGAAACATGCAAAACATCTCAAAAGGGG
 AATCCCGAGTCTTCAGGAAAGACAGACCTCGGGTCTTCGAGTTCAGGAGATACAGGTCTCTGGGGACTT
 GGGGTCCTGTCTGCTGCAAAAAGCTGAGGTGACTGAGGGGAAAGGAGACCCACAGCCCTGGAAGAAGGC
 AAGTCTCCAGCCTCAGAGAAGACCGATCCCCTGGCTTCAAGCAAGGCAGGCTCTGCAAGCCAGGAAAAG
 GCAGAAACGGTTTCCCCTGGAGAAGTGGACGCCATGACTTTAGGAAAAACGGTCCCAACGAGTTCAGGAA
 AAACAGCTTTGGTATCCCAGGGAAGGTGGATCTCATGACCTCAGAAAGAGCAGAAGGCATCCCAGAGCT
 GCAGGCTTCAGAGAAAGGAATCCTGTTAACTCCACACGGGTGGACACCGGGGCCACAGGGAGTACTGAG
 CCCAAATCTGGGGTCAAAGTGATAACCCAGATTCCAGGTGCCACATCCCAGGAAAAGGTGAAAACCTCGT
 CTTTGGAAAAGGAGCAGCCACAACCTGTCTGAGAAGACAGATCCCTCCAGAAAAGTCGACCCCCACGAC
 TGTGGAGCCTGTGTCCCTGGGGAAGGCTGACTCTGCATCTCCATCTCCTAGAAAAGCAGAGTCTCAGACT
 TCCGCCAAGACTGTCCCTCAGGCCCCAGATAAGGCCACGTCTCTCAGGCAATCAGATGGCACACCCT
 ACAGCTCAGCCCAGCCCAGAGAGATACCAGGAGCATCGGATCCCTGCCAGAGCGGGAGCCCTCTGCCAG
 CACCAGCCAGAAAAGACCTAGCGGCAGCGGGCGCTCAGAAGAGCCCGAGCGGAGGCTGCGGGCGCCCT
 CCAGGGCCACGGACTCGCGACAACCTCACCAAGGCGCGTCTGTGGGACCGCGGAGCGCCACCGCCACGGC
 AGGACGCGGGCACCCAGGCAGGCGCGCAGGCTGCGTCTCGGTGGCGGTGAGCCCATGTCTCCGACAGGA
 CGGCGGGGTGGCCCGCCTTACGCTTCCAGGCGGCGCGCGCGCCAGCCCGCGCCAGCCCGCGCCAGGCCACCA
 TCGCGCCGGGACGCGGGCTGCAGGTGTCGCTGGGAGCCGCGGAGACACGCTCGGTGGCCACGGGGCCCA
 TGACTCCGACAGGCGCAGCGCCCGCGCTGCGCGCCGTCTTCCCGAGGTGCGGGTGGCGCCAGGCTC
 GGTGTTGGCGCCGCTTGGCGCCCAGGAGGCGACCGAGCCGTTGCGGACGTGAGCTGGGACGAGAAG
 GGCATGACGTGGGAAGTGTACGGTGTCTCCATGGAGGTGGAGGTGCTGGGCATGGCCATCCAGAAGCATT
 TGGAGCGTCAGATCGAGGAGCACGGCCCAAGGGGCGCGCGCGCGCCGCGCCCGCCCGCTCCGCGC
 GGGCCAGCCGTGCAGGCTCTGTGCGCACCGCACCGGCGGAGGGCGCGCCCAAGCGCCCGCGGGCCTC
 TTCGCGCGCTGCTGCAGAGTGTGCGCCGGCGCGGTGCTGCTCGCGGGCGGGCCCACTGCGGAG

AG**CGGACCG**ACGCGTACGCGCCGCTCGAGCAGAACTCATCTCAGAAGAGGATCTGGCAGCAAATGATATCC
 TGGATTACAAGGATGACGACGATAAGGTTTAA

Protein Sequence: >MR211237 representing NM_012014
 Red=Cloning site Green=Tags(s)

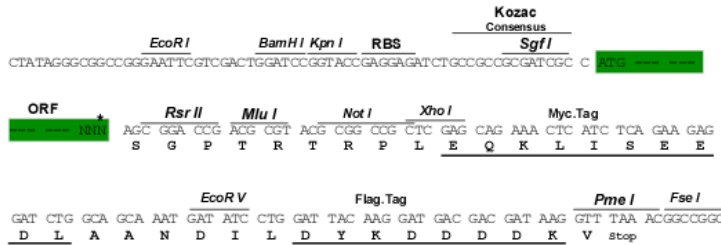
MRDCCSSPKAIPAPPRHALDQSLGMDPRHTSSSGAAEGASC SERPAGSLACPSNPCSPLPETPRAHGALT
 SDNSGTTLFGKPEPMSSAEATPTASEIRNPVFSKMDGNLSLKQADSTSTRKEEAGSLRNEESMLKGAEP
 MIYKGEPGTVGRVDC TASGAENSGSLGKVDMPCCSKVDIVSPGGDNAGSLRKVETISSGKMDPKTENVM
 HSRRRPSTGEGDLVSLRENDMKPPDNTDSASTKKTDPEFSGKLTGSSGKTELVSSTVAPVTSENVN
 PVCSSGAGPAAVGNSETLSSVKKDPQLLGKKEAVSSGEGSVSVRMAETVSARQPEGMFPAKTDSTSSNS
 TGPSGRADPVSLRNSELVSPVKPERLSSGQAERVSLVKTETLSSGKEDPRSSRRVDHTTGTGMQTSQKG
 NPESGKTDLGSSSGDTRSLGTWGLSAAKAEVTEGKDPQPWKASLPASEKTDPLASSKAGSASQGG
 AETVSPGEVDAMTLGKT VPTSSGKTALVSPGKVDLMTSERAEGIPQLQASEKGNPNSTRVDTGATGSTE
 PKSGVKVITQIPGATSPGK VETPSLQKEQPQLSEKTDPSRKVDPPTTVEPVSLGKADSASPSRKAESQT
 SAKTVQPAPDKATSSLRQSDGTPYSSAQPRDTRISGLPEREPSASTSQKDLAAAAAQSPSAEAAAAPP
 PGPRTDNFTKAPSWDAGAPPPREDAGTQAGAQC VSVAVSPMSPQDGAGGPAF SFQAAPRAPSPAPRPP
 SRRDAGLQVSLGAAETRSVATGPMP TQAAAPPVPPV FPEVVRVPGSVLAAALAPQEATEPVRDVSWDEK
 GMTWEVYGASMEVEVLGMAIQHLERQIEEHGRQGAPAPAPPPAVRAGPGRAGSVRTAPAEGA AKRPPGL
 FRALLQSVRRPRCCSRAGPTAE

SGPTRTRPLEQKLI SEEDLAANDILDYKDDDDKV

Restriction Sites: SgfI-RsrII

Cloning Scheme:

Cloning sites used for ORF Shuttling:



* The last codon before the Stop codon of the ORF

ACCN: NM_012014

ORF Size: 2796 bp

OTI Disclaimer: Due to the inherent nature of this plasmid, standard methods to replicate additional amounts of DNA in E. coli are highly likely to result in mutations and/or rearrangements. Therefore, OriGene does not guarantee the capability to replicate this plasmid DNA. Additional amounts of DNA can be purchased from OriGene with batch-specific, full-sequence verification at a reduced cost. Please contact our customer care team at custsupport@origene.com or by calling 301.340.3188 option 3 for pricing and delivery.

The molecular sequence of this clone aligns with the gene accession number as a point of reference only. However, individual transcript sequences of the same gene can differ through naturally occurring variations (e.g. polymorphisms), each with its own valid existence. This clone is substantially in agreement with the reference, but a complete review of all prevailing variants is recommended prior to use. [More info](#)

OTI Annotation: This clone was engineered to express the complete ORF with an expression tag. Expression varies depending on the nature of the gene.

Components: The ORF clone is ion-exchange column purified and shipped in a 2D barcoded Matrix tube containing 10ug of transfection-ready, dried plasmid DNA (reconstitute with 100 ul of water).

Reconstitution Method:

1. Centrifuge at 5,000xg for 5min.
2. Carefully open the tube and add 100ul of sterile water to dissolve the DNA.
3. Close the tube and incubate for 10 minutes at room temperature.
4. Briefly vortex the tube and then do a quick spin (less than 5000xg) to concentrate the liquid at the bottom.
5. Store the suspended plasmid at -20°C. The DNA is stable for at least one year from date of shipping when stored at -20°C.

RefSeq: [NM_012014.4](#), [NP_036144.2](#)

RefSeq Size: 4367 bp

RefSeq ORF: 2799 bp

Locus ID: 26913

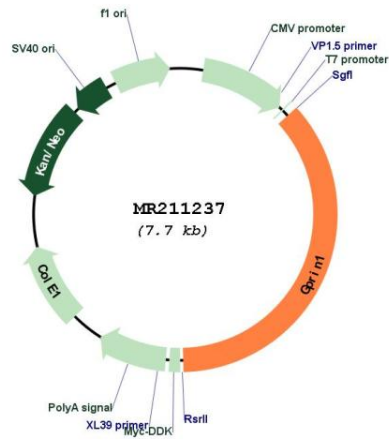
UniProt ID: [Q3UNH4](#)

Cytogenetics: 13 B1

MW: 95.5 kDa

Gene Summary: May be involved in neurite outgrowth.[UniProtKB/Swiss-Prot Function]

Product images:



Circular map for MR211237