

Product datasheet for **MR211218**

Diap3 (BC028920) Mouse Tagged ORF Clone

Product data:

Product Type:	Expression Plasmids
Product Name:	Diap3 (BC028920) Mouse Tagged ORF Clone
Tag:	Myc-DDK
Symbol:	Diap3
Synonyms:	Dia2, mDia2, p134MDia2
Mammalian Cell Selection:	Neomycin
Vector:	pCMV6-Entry (PS100001)
E. coli Selection:	Kanamycin (25 ug/mL)



[View online »](#)

ORF Nucleotide Sequence:

>MR211218 representing BC028920
 Red=Cloning site Blue=ORF Green=Tags(s)

TTTTGTAATACGACTCACTATAGGGCGGCCGGAATTCGTGACTGGATCCGGTACCGAGGAGATCTGCC
 GCC**GCGATCGCC**

ATGAGTGACAAGAGGAGTCTTTCCTTGTGGCAAAGCCATGGATCCCAGGCAGCCCGCTATGATGGCAG
 ACGTGGTGAAGCTTCTGTCTGCAGTGTGATTGTCGGCGAGGAAAGCATCCTTGAAGAAGTGTAGAAAGC
 CTTGACTTCAGCTGGAGAAGAAAGAAAGATTGACAGATTTTTTCCATTGTGGAAGGCCTCCGGCATAAC
 TCAGTGAACCTGCAAGTTGCTTGTATGCAGCTCAAAATGCTCTCGTTACATCTCCTGATGATTTGGACT
 TCAGGCTTCACCTCAGAAATGAATTTATGCGTTGGATTGAAAGAGATTTGCCAAACTTAAAGGGCAT
 TAAGAATGATGGCCTGGATATACAACCTAAAGTCTTTGATGAGCACAAGAAGAAGATTTGAGTGAGTTT
 TTCCATCGCCTTGAAGACATTAGAGCTGAACCTGATGAAGCATCTGATGTTTACAGCATGTTATGGGACA
 CAGTTAAGGAACTCGAGCAGAGGGACATTTTCTTCTATTCTCAGCATCTCCTGCTCATTGCAATGA
 TCGTTTTATAAGAGAGCAGTATTTCAAATTAATTGATGAGTGTGTGTACAGATTGTGTACATAGAGAT
 GGAACGGACCCTGACTTCACATACAGAAAAAGACTAGATTTGGACTTAAGTCAGTTTGTAGATGTTTGCA
 TAGATCAGGCCAAACTAGATGAGTGGGAAGAGAAAGCATCCGAACATTGCAAGAAATTTGAAAAAGAGTG
 TACTGACCACCAAGAAACCCAGGCTCAATTGCAGAAAAGAGAGGCAAAGATTAATGAGCTCAAGCAGAG
 TTACAAGCTTTTAAATCCAGTTTGGTGCCTTGCACCTGGTACAAAAATTCCTTTGCAACCTTCAGTAG
 AAGGTGAAGCTGGCCCTTCAGCCCTTCTCCTGCCCCACCAGCACTCAGTGGAGGAGTGCCGCTCCCCC
 ACCGCCCTCCTCCACCACCCACCCTCCAGGAATGCCAATGCCATTTGGTGGCCCTGTACCACCA
 CCACCTCCTCTGGGATTCCTGGTGGGCAAAGCTCTATTCCATTAACCTGCCATTTGGTTGAAACCAA
 AGAAGAAATTTAAGCCTGAAATCAGCATGAGAAGATTGAATGGTTAAAGATCGGACCAAATGAAATGTC
 TGAGAAGTCTTCTGGATCAAAGTAAATGAAAATAGATGAAAATAGGGATTTGCTTTGTAACCTTGAG
 AACACTTTTTGTTGCCAAGACAAAGAGAAAAGGAATACAATGACTTTGATGAGAAGAAAGTTATTAAGA
 AGAGAATGAAGGAACTTAAATTTCTAGATCCTAAAATGCTCAGAACCTTTCAATCTTCTGAGCTCCTT
 CCGGGTGCCATATGAGAAAATCAGGACGATGATTTGGAAGTGGATGAAACACAGTTGTCAGAGTCCATG
 ATTCAGAACTTAATAAAGCACCTTCTGATGAGGAGCAGTTGAAGTCATTGTCCCAGTTTAGAAGTGACT
 ATAACAGTTTGTGTGAGCCTGAGCAGTTCGCTGTTGTGATGAGCAATGTGAAGAGACTCCGGCCACGGCT
 CAGTGCTATTCTTTAAGCTTCAATTTGAAGAGCAGGTGAACAACATCAAACCTGACATCATGGCTGTC
 AGTACTGCCTGCGAGGAGATCAAGAAGAGCAAAGGCTTTAGCAAGTTGCTGGAACCTGTGTTGCTAATGG
 GAAACTACATGAATGCTGGCTCCCGAAATGCTCAAACCTTCGGATTTGACCTTAGCTCTCTGTAAACT
 GAAGGATACAAAATCTGCAGATCAGAAAACCACTCCTCCATTTCTGGTAGATGTATGTGAAGAAAAG
 CATGCTGACATCCTTCACTTTGTGGACGATTTGGCACATTTAGACAAAGCTAGCAGAGTCTCTGTAGAAA
 TGCTGGAAAAGAAGTGAAGCAGATGGGAAGGCAGCTTCAACAGCTTGAAGAATTTGGAACCTTTCC
 CCCTCCTGAGGACTTGATGACAAGTTTGTGATAAAGATGTCCAGCTTCGTTATCAGTGGCAACGAGCAG
 TATGAAAACCTCCACACTACTGGGCAGCATGACACAATTGTACCAGAGTATAATGGGCTACTATGCTG
 TCGACATGAAGAAGGTTCCGTGGAAGAGTTTTTAATGATCTGAACAACCTCAGAACTTCATTTATGCT
 AGCATTAAAGGAAAACATCAAAAAACGAGAAGCAGCAGAAAAGGAGAAAACGTGCCAGGATAGCGAAAGAG
 CGAGCAGAGAAAAGAGCGACTTGAACGCCAGCAAGAGAAAAGCGCTTACTAGAAATGAAAACCTGAGGGAG
 ATGAGACAGGAGTGATGGATAGTCTGCTGGAGGCTTGCAGTCAGGGGCTGCCTTCCGCGACAGAAGAAA
 AAGGACACCAAAGCTGAAAGATATTCGGCAGAGTCTCAGCCGATGTCTCAGAGGCTGTTCTCAAAGTT
 TGTAACCATGAAAATCAGAAAATGCAGTTGACAGAAGGGTACGTCCACACCACAGTATCAATTGCAACT
 CCACCAGGACTCCAGTCGCCAAGGAGCTTAATTAATCTAGACACTCATGCGTCTACAGGGAGGATCAA
 GGCAGTTGAGAAGGAAGCCTGTAATGCAGAAAGCAACAGAAAAAGGAAATGGAACCTTCTGGCTCTGTT
 GCTAAAAGCGAATCAGTTCCTGAAGTTGAAGCCCTGCTGGCAAGATTACGAGCTTTA

ACGCGTACGCGGCCGCTCGAGCAGAAACTCATCTCAGAAGAGGATCTGGCAGCAAATGATATCCTGGATT
 ACAAGGATGACGACGAT AAGGTTTAA

Protein Sequence: >MR211218 representing BC028920
 Red=Cloning site Green=Tags(s)

MSDKRSL SLLAKAMDPRQPAMMADVVKLLSAVCIVGEESEILEEVLEALTSAGEERKIDRFFSIVEGLRHN
 SVNLQVACMQLINALVTSDDLDFRLHLRNEFMRCGLKEILPNLKGIKNDGLDIQLKVFDEHKEEDLSEF
 FHRLDIRAELDEASDVYSMLWDTVKETRAEGHFLSILQHLLLRNDRFIREQYFKLIDECVSQLVHRD
 GTDPDFTYRKRDLDL SQFVDVCIDQAKLDEWEEKASEHCKKFEKECTDHQETQAQLQKREAKINELQAE
 LQAFKSQFGALPPGTKIPLQPSVEGEAGPSALPPAPPALSGGVPPPPPPPPPPPPPLPGMPMPFGGPVPP
 PPPLGFLGGQSSIPLNLPFGLPKPEKFKPEISMRRLNWLKIGPNEMSENCFWIKVNVENKYENRDLLCKLE
 NTFCCQDKEKRNNDNDFDEKKVIKKRMKELKFLDPKIAQNLSIFLSSFRVPYEKIRTMILEVDETQLSESM
 IQNLIKHLPDEEQKLSLQFRSDYNSLCEPEQFAVMSNVKRLRPRLSAILFKLQFEEQVNNIKPDIMAV
 STACEEIKKSKGFSKLELVLLMGNYMAGSRNAQTFGFDLSSLCKLKDTKSADQKTTLLHFLVDVCEEK
 HADILHFVDDLAHLDKASRVSVEMLEKNVKQMRQLQLEKNLETFPPPEDLHDKFVIKMSFVISANEQ
 YEKSTLLGSMTQLYQSIMGYYAVDMKKVSVVEEFNDLNNFRTSFMLALKENIKKREAAEKEKRARIAKE
 RAEKERLERQEKRLLEMKTEGDETGVMDSLLEALQSGAAFRRRKRTPKLDIRQSLSPMSQRPVLKV
 CNHENQKMQLTEGSRPHHSINCNSTRTPVAKELNYNLDTHASTGRIKAVEKEACNAESNRKKEMELLGSV
 AKSESVPEVEALLARLRL

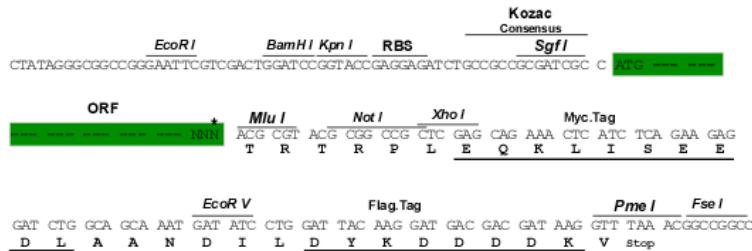
TRTRPLEQKLISEEDLAANDILDYKDDDDKV

Chromatograms: https://cdn.origene.com/chromatograms/mm9043_a11.zip

Restriction Sites: SgfI-MluI

Cloning Scheme:

Cloning sites used for ORF Shuttling:



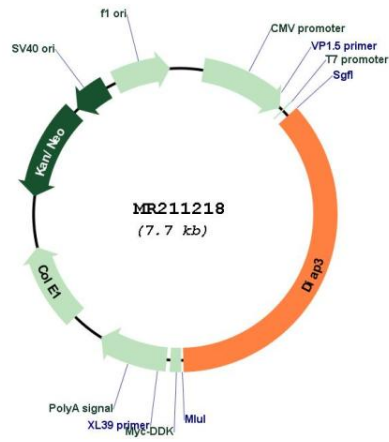
* The last codon before the Stop codon of the ORF

ACCN: BC028920

ORF Size: 2787 bp

OTI Disclaimer:	The molecular sequence of this clone aligns with the gene accession number as a point of reference only. However, individual transcript sequences of the same gene can differ through naturally occurring variations (e.g. polymorphisms), each with its own valid existence. This clone is substantially in agreement with the reference, but a complete review of all prevailing variants is recommended prior to use. More info
OTI Annotation:	This clone was engineered to express the complete ORF with an expression tag. Expression varies depending on the nature of the gene.
Components:	The ORF clone is ion-exchange column purified and shipped in a 2D barcoded Matrix tube containing 10ug of transfection-ready, dried plasmid DNA (reconstitute with 100 ul of water).
Reconstitution Method:	<ol style="list-style-type: none"> 1. Centrifuge at 5,000xg for 5min. 2. Carefully open the tube and add 100ul of sterile water to dissolve the DNA. 3. Close the tube and incubate for 10 minutes at room temperature. 4. Briefly vortex the tube and then do a quick spin (less than 5000xg) to concentrate the liquid at the bottom. 5. Store the suspended plasmid at -20°C. The DNA is stable for at least one year from date of shipping when stored at -20°C.
RefSeq:	BC028920.1
RefSeq Size:	3770 bp
RefSeq ORF:	2789 bp
Locus ID:	56419
Cytogenetics:	14 E1
MW:	138.2 kDa
Gene Summary:	<p>Actin nucleation and elongation factor required for the assembly of F-actin structures, such as actin cables and stress fibers (PubMed:10678165, PubMed:23558171). Required for cytokinesis, stress fiber formation and transcriptional activation of the serum response factor (PubMed:10678165, PubMed:23558171). Binds to GTP-bound form of Rho and to profilin: acts in a Rho-dependent manner to recruit profilin to the membrane, where it promotes actin polymerization (PubMed:10678165). DFR proteins couple Rho and Src tyrosine kinase during signaling and the regulation of actin dynamics (PubMed:10678165). Also acts as an actin nucleation and elongation factor in the nucleus by promoting nuclear actin polymerization inside the nucleus to drive serum-dependent SRF-MRTFA activity (PubMed:23558171). [UniProtKB/Swiss-Prot Function]</p>

Product images:



Circular map for MR211218