

Product datasheet for **MR211181**

Sardh (NM_138665) Mouse Tagged ORF Clone

Product data:

Product Type:	Expression Plasmids
Product Name:	Sardh (NM_138665) Mouse Tagged ORF Clone
Tag:	Myc-DDK
Symbol:	Sardh
Synonyms:	MGC6279
Mammalian Cell Selection:	Neomycin
Vector:	pCMV6-Entry (PS100001)
E. coli Selection:	Kanamycin (25 ug/mL)



[View online »](#)

ORF Nucleotide
Sequence:

>MR211181 representing NM_138665
 Red=Cloning site Blue=ORF Green=Tags(s)

TTTTGTAATACGACTCACTATAGGGCGGCCGGGAATTCGTCGACTGGATCCGGTACCGAGGAGATCTGCC
 GCCCGCATCGCC

ATGGCTTCACTGAGCCGGTCTACGTGTAGCTGCCACCTGTCCTCGAGGGAGAGCTGCTTGAATCTGG
 GGCTACAACCCCTAGCCACAGAGGCCAGGCCACCACCGAGAAGAGTGTTCCCTTATCAGCGGACCCTGAA
 GGAGGAGGCCAAGGTGCCTCCGTGGTGCCCAAGGACCAAGCCAGCCCTGCCTAGCACAGCCAATGTT
 GTGGTCATCGGTGGGGCAGTTTGGGCTGCCAGACTCTGTATCACTTGGCTAAGCTGGGTGTAGGTGGAG
 CCGTGCTGCTGGAGAGAGCGACTGACCTCTGGGACCACCTGGCACACAGCAGGCTTACTGTGGCAGCT
 GCGGCCACAGCATGTGGAGGTAGAGCTTTGGCTCACACACGGCAAGTGGTGAGCCGTGATCTGGAAGAG
 GAGACTGGGCTGCATACAGGCTGGATCCAGAATGGTGGCCTTTCATCGCCTCTAACCAGCAACGCCTGA
 ATGAATAACAAGAGGCTCATGTCTTGGCAAGGCCTATGGTATAGAATCCCACGTGCTGAGCCCAGCAGA
 GACCAAGAGTCTATATCCGCTGATGAACGTGGACGACCTCTATGGGACCCTGTATGTGCCACAGGATGGT
 ACCATGGACCCCGCTGGCACCTGTACTACCCTCACCAGAGCAGCAGTGGCTCGAGGAGCTCAGGTCAATTG
 AAAACTGTGCGGTGACTGGCATCCGTGTGCGGACGGACGACTTTGGAGTGCAGCGGGTGGCAGCTGTGGA
 GACAGAGCATGGCTCCATCCAGACACCCTGTGTGGTCAACTGTGCAGGAGTGTGGGCGAGCAAGGTGGG
 CGCATGGCTGGAGTGAAGTCCCCTGGTGGCCATGCACCATGCTTACGTCGCTACTGAGCGCATCGAGG
 GGATCCAGAACATGCCCAATGTCGGGATCACGATGCTTCTGTCTACCTCCGACTGCAGGGGGATGCCTT
 GTCTGTGGGTGGCTATGAGGCCAACCTATCTTTGGGAGGAGGTGTGAGACAAATTTGCCTTTGGCCTC
 TTTGACCTGGACTGGGATGTGTTCAACAGCACATTGAAGGCCATTAAACCGTGTCCCTGTGTTGGAGA
 AGACGGGATCAAGTCCACTGTCTGTGGTCTGAATCCTTACACCTGACCATAAGCCCCCTGGGGGA
 GGCTCCTGAACTCCGTGGCTTCTTCTTGGCTGTGGCTTCAACAGTGCAGGCATGATGTTGGGTGGTGGC
 TGTGGACAAGAGCTGGCCATTGGATTGTGCAGGGCGCCAGAGAAGGACATGTACAGCTATGACATCA
 GGCGTTTCCATCACTCGCTCACGGACCACCCGCTGGATCCGAGAGCGCAGCCATGAGTCTATGCCAA
 GAACTACTCGTTGTCTTCCACACGATGAGCCACTGGCAGGACGCAACATGAGGAGAGACCCCTGCAT
 GAGGAGCTGCTTGGACAAGGCTGTGTGTTCAAGAGCGACAGGGATGGGAACGGCCGGGATGTTCAACC
 CCCAGGAAACAGCTCAGGTCCTTGACTACGACTACTACGGGGCTACGGAAACAGGCACACAAGGACTA
 CACCTACAGCAGGTTGCTAGGCGATGAGTACACCTTCGACTTCCCACCCACCACCATGATCCAGAAG
 GAATGTCTGGCCTGCAGAGGGGCTGCTGTGTGTTCAACATGTCTTACTTTGGGAAGTTCTACCTGCTCG
 GGGTGGAGCGCCAGGAAGGCTGCAGACTGGCTTCTCAGCAGATGTCAACCGACCCCGAGGCTCAACAGT
 GTACACATGCATGCTGAACCAACGGGGAGGCACTGAGAGCGACCTGACTGTTAGCCGATTGGCTCCTGGC
 ACCCAGGCCAGTCCCCTGGTCCCTGCCTTTGAAGGGGATTGCTACTACCTGGCCGTGGGTGGGGCTGTGG
 CCCAACACAACCTGGTCCCACATAAACACGGTGTACAGGACCAGGAGTCCGGTGCCAGCTTATGGATAG
 TTCTGAAGATCTGGGCATGCTCAGTATCCAGGGCCAGCCAGCCGTGACATCCTGCAGGATGTGCTTGT
 GCTGACCTGAGCAACGAGGCCTTCCCCTTCTCCACCCACCAGTGGTGGAGCCCGGGCAGCTGGTCC
 GGGCCATCAGGCTGTCTTTGTGCGGGAGCTGGGATGGGAGCTGCATGTACCCCGGCATCCTGCTTGC
 AGTGTACCGGGCTGTGATGGCTGCAGTGCAGGTCGAGGCATGGCCTAGTCAACGCAGGCTACCGTCCATCGAC
 TCCTGAGCATCGAGAAAGGCTATAGACACTGGCATGCAGACCTGAGGCCGATGACAGCCCTGGAGG
 CAGGATTGGCCTTCACTGCAAACCTCAAGACCTCGGTGCCCTTCTAGGCCGAGAGGCCCTGGAGAAGCA
 GCGTGCCACAGGCTCCGCCGACGCTGATATGCCTCACTGTGGAAGAGGAGTGCCTATGTTTGGCCTG
 GAGGCCATCTGGAGAAACGGCCAAGTGGTGGCCATGTCCGGAGAGCTGACTTTGGATTTACTGTGAACA
 AGACCATGCCTATGGCTACATCCGAGACCCAGTGGTGGCCCTGTCTCTGGACTTTGTGAAGAAATGG
 AGAGTATGCCTTGGAGAGAATGGGGTACCTATGCTGCCAGGTTACCTGAAGTCTCCCTTTGACCT
 GACAACAAGCGGGTGAAGGAATCTAT

ACGCGTACGCGGCCGCTCGAGCAGAACTCATCTCAGAAGAGGATCTGGCAGCAAATGATATCCTGGATT
 ACAAGGATGACGACGAT AAGGTTTAA

Protein Sequence: >MR211181 representing NM_138665
 Red=Cloning site Green=Tags(s)

MASLSRVLRVAATCPGRAAWNGLQPLATEARPTTEKSVVPYQRTLKEEAQGASVVPQGPSQPLPSTANV
 VVIGGGSLGCQTLYHLAKLGVGGAVLLERERL TSGTTWHTAGLLWQLRPSDVEVELLAHTRQVVSRLLEE
 ETGLHTGWIQNGGLFIASNQQRLENEYKRLMSLGKAYGIESHVLSPAETKSLYPLMNVDDL YGTL YVPQDG
 TMDPAGTCTTL TRAAVARGAQVIENCAVTGIRVRTDDFGVRRVAAVETEHGSIQTPCVVNCAGVWASKVG
 RMAGVKVPLVAMHHAYVYVTERIEGIQNMPNVRDHASVYLRLQGDAL SVGGYEANPIFWEEVSDKFAFGL
 FDL DWDVFTQHIEGAINRVPVLEKTGIKSTVCGPESFTPDHKPLMGEAPELRGFFL GCGFNSAGMMLGGG
 CGQELAHWIVHGRPEKDMYSYDIRRFHSL TDHTRWIRERSHESYAKNYSVVFPHDEPLAGRNMRDPLH
 EELLGQGCVFQERQGWERPWFNPQETAQVLDYDYYGAYGNQAHKDYYSRLLGDYEYTFDFPPHHMIQK
 ECLACRGA AVFNMSYFGKFYLLGVDARKAADWLF SADVNRPPGSTVYT CMLNQRGGTESDLTVSRLAPG
 TQASPLVPAFEGDCYYLAVGGAVAQHNWSHINTVLQDQEFRCQLMDSSEDLGMLSIQGPASRDILQDVLD
 ADLSNEAFPFFSTHQLVRAAGHLVRAIRLSFV GELGWELHVPASCLPVYRAVMAAGARHGLV NAGYRAID
 SLSIEKGYRHHADLRPDDSPLEAGLAF TCKLKT SVPFLGREALEKQRATGLRRRLICLTV EEEVPMFGL
 EAIWRNGQVVGHVRRADFGFTVNKTIAYGYIRDPSGGPVSLDFVKNGEYALERMGVTYAAQVHLKSPFDP
 DNKRVKGIY

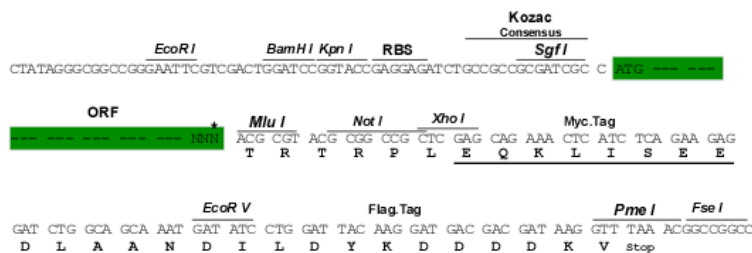
TRTRPLEQKLISEEDLAANDILDYKDDDDKV

Chromatograms: https://cdn.origene.com/chromatograms/mm9097_f11.zip

Restriction Sites: SgfI-MluI

Cloning Scheme:

Cloning sites used for ORF Shuttling:

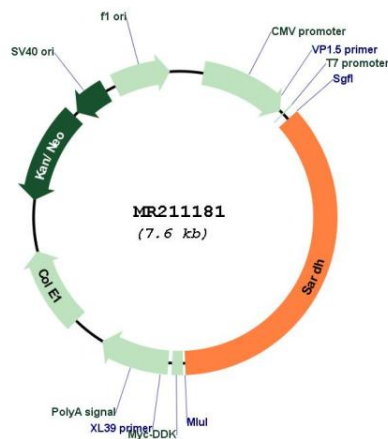


* The last codon before the Stop codon of the ORF

ACCN: NM_138665

ORF Size: 2757 bp

OTI Disclaimer:	The molecular sequence of this clone aligns with the gene accession number as a point of reference only. However, individual transcript sequences of the same gene can differ through naturally occurring variations (e.g. polymorphisms), each with its own valid existence. This clone is substantially in agreement with the reference, but a complete review of all prevailing variants is recommended prior to use. More info
OTI Annotation:	This clone was engineered to express the complete ORF with an expression tag. Expression varies depending on the nature of the gene.
Components:	The ORF clone is ion-exchange column purified and shipped in a 2D barcoded Matrix tube containing 10ug of transfection-ready, dried plasmid DNA (reconstitute with 100 ul of water).
Reconstitution Method:	<ol style="list-style-type: none"> 1. Centrifuge at 5,000xg for 5min. 2. Carefully open the tube and add 100ul of sterile water to dissolve the DNA. 3. Close the tube and incubate for 10 minutes at room temperature. 4. Briefly vortex the tube and then do a quick spin (less than 5000xg) to concentrate the liquid at the bottom. 5. Store the suspended plasmid at -20°C. The DNA is stable for at least one year from date of shipping when stored at -20°C.
RefSeq:	<u>NM_138665.2, NP_619606.1</u>
RefSeq Size:	4573 bp
RefSeq ORF:	2760 bp
Locus ID:	192166
UniProt ID:	<u>Q99LB7</u>
Cytogenetics:	2 A3
MW:	101.7 kDa

Product images:


Circular map for MR211181