

Product datasheet for **MR211155**

Chaf1a (NM_013733) Mouse Tagged ORF Clone

Product data:

Product Type:	Expression Plasmids
Product Name:	Chaf1a (NM_013733) Mouse Tagged ORF Clone
Tag:	Myc-DDK
Symbol:	Chaf1a
Synonyms:	AL023013; AL024058; Cac1p; CAF-1
Mammalian Cell Selection:	Neomycin
Vector:	pCMV6-Entry (PS100001)
E. coli Selection:	Kanamycin (25 ug/mL)



[View online »](#)

ORF Nucleotide Sequence:

>MR211155 representing NM_013733
 Red=Cloning site Blue=ORF Green=Tags(s)

TTTTGTAATACGACTCACTATAGGGCGGCCGGGAATTCGTCGACTGGATCCGGTACCGAGGAGATCTGCC
 GCC**CGCATCGCC**

ATGTTGGAGGAGCCGGAGGCCGCGACGCGGACAGCCGCGCCGTGGATTGCAAAGACAGACCCGGTTCC
 CAGTGAAGAGGTTAATACAAGCCCGCTTCCCTTCAAACGCCTGAACCTGTTCCCAAGGAGAAAGTTGA
 GGAAGACACATCACAAAAGCAGCTGTGAAAAGCAAAGTCCCGGATCTACAATTGCTTTGGCACTTTT
 GAAAGCCAGTGTACACAGGCTCTCACGTAGGCTTGAGTACAAAGTTGGTCGGTGCCAGGGCCCCATTG
 ATAGCTTCTTGAGGGCAACAATCAAGCCAGTACCGAGTGTGGTATTATCGACCTGACGGAGAAGTGCAG
 TGACATTCAGACAGCCCTGAGGGCCACAGTGAACCTAAGTCTGACACTGCTGGTGTGGTACCACAGTG
 GAAGGAGTGCACAAGCAGCAGGAGCACTCTGCAGCAGAGCTGTGTCTCTAGAGACCCCTCAGACATCA
 CTTGTACATGGAAGAGGAGCCTGGGAGTCCAGGAGACCCAAAGAGGACGGGTGACTGTCAGGCTGGTTC
 ACTACAGAGCTGTCCGGAGCTGACCCAGGTTCTAGGACATGCCCAAGGAGTTATCAAGCTGGAGC
 AAGGCAGGGGATCTCCTATTTATAGAGAAAGTGCCTGTGGTGGTCTAGAGGACATCCTGGCCACTAAGC
 CCTCCATTGCCTCTTCCCATGATGTCCCTGGATAGGAGTGTCACTTCAGAGAGTGAAATACTGGAGTC
 CTGCCCGAGGATGACTCCATACTGAGCCACTCCTCCACCAACTCCTTCTCCAACCAGCTCCTCTGAG
 GGACATCCACACCCCGAGAACAATCGGGGTGGGAGAAGTCCCCCTCCACCCAGCCTGCAGAGTTGCCA
 AGAACTTTGTCAAAGGCTCCACAGAGAAGGGCAGGAGCAAAGTGCACAGAGATAGAGAACAGCAGAGGGA
 AGAGAAGGAAAAGCTGAGGGAAGAGATACGACGAGCCAAGGAGGAGGCACGGAAGAAGAAGGAGGAGGAG
 AAGGAGCTGAAGGAAAAGGAGCGGAGGGAAAAGCGGGAGAAGATGAGAAGGAGAAGCGGAGAAGCAGC
 GGCTAAAGGAGGAAAAACGCAAGGAGCGGCAGGAAGCTCTGGAGGCTAACTGGAGGAGAAGGAAAGAA
 GGAGGAAGAGAAGCGGTTACGGGAGGAAGAGAAGCGGTTACGGGAAGAAGAGAAGCGCATTAAAGGCAGAA
 AAGGCAGAGATCACTCGATTCTCCAGAAAACCAAGACTCCGCGAGCTCCCAAGACCCTGGCCGGTTCT
 GTGGTAAGTTTGCCTTTGAAATCAAAGAACACATGGTGTGGCTCCACGGTGCAGCTGCCTTGGAA
 TCAAGACCTGTGCGATCAGCTGGACCAGCTCCTGCAGCAGCAGAGTGTGGCAAGCACCTTCTCAGTGAC
 CTAAAAAGCCGGTGCCTTGTAGATCGGGGCCACCCGGGTCTGTGGCCATGACACAGACATCATGAACA
 GGGATGTGGTATTGTGGAGAGCAGCAAGGTGGACGGTGTGTCTGAAAGGAAGAAGTTTGGCCGATGAA
 GCTTCTGCAGTTCTCAGAGAACCACCGCCAGCATACTGGGGACGTGGAACAAGAAGACAGCCATCATC
 CGCCCCGGAACCCTGGGCCAGGACAAAGACCTTCTTACTATGAGGTAGACAGTGCAGATGAGTGGG
 AAGAGGAGGAACCTGGGAGTCTTTGTCCACAGTGAAGGGGATGAGGATGACGATGTGGGGGAAGATGA
 GGATGAGGACGATGGCTTCTTTGTGCCCATGGTACTTATCTGAAGATGAAGGCGTGACTGAGGAGTGT
 GCAGACCTGAGAACCACAAAGTACACCAGAAGCTGAAGGCCAAGGAGTGGGATGAGCTCCTAGCCAAGG
 GCAAGCGCTTTCGTGTGCTGCAGCCTGTGCACGTGGGATGTGTATGGGCATCAGAGGCAGCCAAGTGCAC
 GAGTTCGACTTGAAGCTGCTGCAGCAGTTCACATGCATGCCTGCTGGATGTGGCATCCCTGATGAGCCA
 GAACCCGGGGCCTCCAGGAGGAAAAGAGGGACCAGCATATCCTGGCCAGTTGCTTCCGCTGCTACATG
 GCAATGTGAATGGGAGCAAGGTGATCATCCATGAATCCAGGAGCAATGCCGAGGGGCTGCTGACCCT
 TCCAAGTCCCACCCACACCTGCAGATGCCCAACTGGAGGATGCTGTTGCTGTGCCATCCAAGGCCAGG
 CTGAAGCGCCTTATCTCTGAGAAGCTCTGCCTATGAGAAGCGGCCCAACTCCGATGTGTGCTGGTATGTGC
 ACCCAGAGGTGCTCAAGAGCTTTGGCCAGGAGTGCTGCCAGTGCCTGCCAGTGGACCTACATCACCAC
 CATGCCCTCAGCACCCAGGGAAGACAGTGGCAGTGCTTCTACTGAGGGGCTGGCCAGAGCACACCTATG
 CTAAGCGGAAGCCAGCGGCCACCATGTGCATCACGCAGTTTATGAAGAAGCGGCGCTATGATGGAC
 AGGTTGGTCTGGGGACATGGATGGCTTCCAGGCAGACACAGAAGAGGATGAAGAGGATGACACAGACTG
 TATGATCATAGATGTGCCAGATTTGGGAGTGACGTGTCAGAAGCTCCCATACCTGCTCCACACTTTGC
 AAG

ACGCGTACGCGGCCGCTCGAGCAGAAACTCATCTCAGAAGAGGATCTGGCAGCAAATGATATCCTGGATT
 ACAAGGATGACGACGATAAAGTTTAA

Protein Sequence: >MR211155 representing NM_013733
 Red=Cloning site Green=Tags(s)

MLEEPEAATRTAAAVDCKDRPGFPVKRLIQARLPFKRLNLPKEKVEEDTSPKAAVESKVPDLQLSLGTF
 ESQCHTGSVHGLSTKL VGGQGPIDSFLRATIKPVPSVVIIDL TENCSDIPDSPEGHSELSPDTAGVTTV
 EGAAKQEQEHSAAELCLETSPDITCHMEEEPGSPGDPKRTGDCQAGSLQSCPELTPGSRCTPTKELSSWS
 KAGDLLFIEKVPVVVLEDILATKPSIASLPMMSLDRSVTSESEILESCPEDDSILSHSSTNSSSPTSSPE
 GPSTPPEHRGGRSSPSTPACRVAKNFVKGSTEKGRSKLHRDREQQREEKEKLRREEIRRAKEEARKKKEE
 KELKEKERREKREKDEKEKAQRLKEEKRKEQEALEAKLEEKRKKEEKRLREEEKRLREEEKRIKAE
 KAEITRFFQKPKTPQAPKTLAGSCGKFAPFEIKEHMLVAPRCRAALDQDLCDQLDQLLQQQSVASTFLSD
 LKSRLPLRSGPTRVCGHDTDIMNRDVVIVESSKVDGVSERKKFGRMKLLQFSENHRPAYWGTWNKKTAI
 RPRNPWAQDKDLLDYEVDSDEWEEEEPGESELSHSEGEDDDVGEDEDEDGFFVPHGYLSEDEGVTEEC
 ADPENHKVHQKLKAKEWDELLAKGKRFVLPVHVGCWASEAANCTSSDLKLLQQFTACLLDVASPD
 EPGASRREKRDQHILAQLLPLLHGNVNGSKVIEHEFQEQRRGLLTLPSPTPHLQMPNLEDAVAVP
 SKAR LKRLISENSAYEKRPNFRMCWYVHPEVLKSFSGQECLPVCQWYIITMPSAPREDSGSASTEGPQSTPM
 LLKRKPAATMCITQFMKKRRYDGGVGSMDMGFQADTEEDEEDTDCMIIDVPDVGSDVSEAPIAPTLC
 K

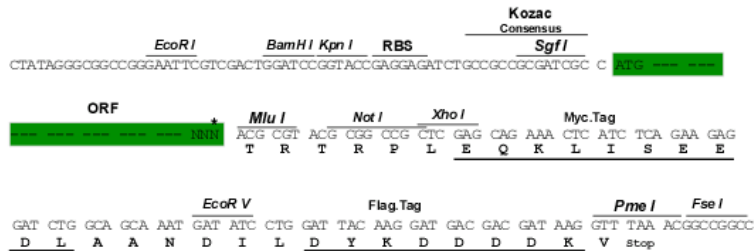
TRTRPLEQKLISEEDLAANDILDYKDDDDKV

Chromatograms: https://cdn.origene.com/chromatograms/mm9101_h01.zip

Restriction Sites: SgfI-MluI

Cloning Scheme:

Cloning sites used for ORF Shuttling:



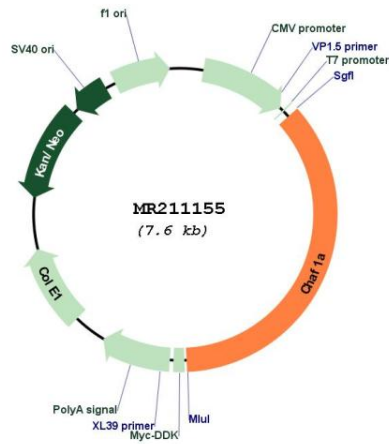
* The last codon before the Stop codon of the ORF

ACCN: NM_013733

ORF Size: 2733 bp

OTI Disclaimer:	The molecular sequence of this clone aligns with the gene accession number as a point of reference only. However, individual transcript sequences of the same gene can differ through naturally occurring variations (e.g. polymorphisms), each with its own valid existence. This clone is substantially in agreement with the reference, but a complete review of all prevailing variants is recommended prior to use. More info
OTI Annotation:	This clone was engineered to express the complete ORF with an expression tag. Expression varies depending on the nature of the gene.
Components:	The ORF clone is ion-exchange column purified and shipped in a 2D barcoded Matrix tube containing 10ug of transfection-ready, dried plasmid DNA (reconstitute with 100 ul of water).
Reconstitution Method:	<ol style="list-style-type: none">1. Centrifuge at 5,000xg for 5min.2. Carefully open the tube and add 100ul of sterile water to dissolve the DNA.3. Close the tube and incubate for 10 minutes at room temperature.4. Briefly vortex the tube and then do a quick spin (less than 5000xg) to concentrate the liquid at the bottom.5. Store the suspended plasmid at -20°C. The DNA is stable for at least one year from date of shipping when stored at -20°C.
RefSeq:	NM_013733.3 , NP_038761.1
RefSeq Size:	3308 bp
RefSeq ORF:	2736 bp
Locus ID:	27221
UniProt ID:	Q9QWFO
Cytogenetics:	17 D
MW:	101.9 kDa
Gene Summary:	Core component of the CAF-1 complex, a complex thought to mediate chromatin assembly in DNA replication and DNA repair. Assembles histone octamers onto replicating DNA in vitro. CAF-1 performs the first step of the nucleosome assembly process, bringing newly synthesized histones H3 and H4 to replicating DNA; histones H2A/H2B can bind to this chromatin precursor subsequent to DNA replication to complete the histone octamer. CHAF1A binds to histones H3 and H4. It may play a role in heterochromatin maintenance in proliferating cells by bringing newly synthesized cbx proteins to heterochromatic DNA replication foci.[UniProtKB/Swiss-Prot Function]

Product images:



Circular map for MR211155