

Product datasheet for **MR211141**

Scube1 (BC080278) Mouse Tagged ORF Clone

Product data:

Product Type:	Expression Plasmids
Product Name:	Scube1 (BC080278) Mouse Tagged ORF Clone
Tag:	Myc-DDK
Symbol:	Scube1
Synonyms:	7330410C13Rik; A630023E24Rik
Mammalian Cell Selection:	Neomycin
Vector:	pCMV6-Entry (PS100001)
E. coli Selection:	Kanamycin (25 ug/mL)



[View online »](#)

ORF Nucleotide Sequence:

>MR211141 representing BC080278
 Red=Cloning site Blue=ORF Green=Tags(s)

TTTTGTAATACGACTCACTATAGGGCGGCCGGGAATTCGTCGACTGGATCCGGTACCGAGGAGATCTGCC
 GCC**CGGATCGCC**

ATGGGCGCGGCCGCTGCGCTGGCACTTGTACTACTGCTCGTCTGGGAGCGCGGGCGGCTGGTGG
 GGGCAGCGGGCTGCCAGGAGCCGTGGACGTGGATGAATGCTCAGAGGGACAGAGACTGCCACATAGA
 TGCCATCTGCCAGAACACACCCAAGTCTTACAAATGTCTCTGCAAGCCCGCTATAAGGGGAAGGAAGG
 CAGTGTGAAGACATTGACGAGTGTGAGAATGACTACTACAACGGGGGCTGTGTCCATGACTGCATCAACA
 TCCCTGGGAACACAGGTGCACCTGCTTTGATGGCTTCATGCTGGCCATGATGGACACAACCTGCCTGGA
 TGTAGATGAGTGTCAAGACAACAACGGCGGCTGCCAGCAGATCTGCGTCAATGCCATGGGCGACTATGAA
 TGCCAGTGCCACAGCGGCTTTTTCTCAGTGACAACCAACACACCTGCATACACCGCTCCAATGAGACAT
 GTGCAGTGAACAACGGAGGCTGTGACCGGACGTGTAAGGACACTGCCACTGGCGTGGGTGCAGCTGCC
 GGTGGATTACAGCTGCAGCCAGATGAAAAGACATGCAAAGACATCAACGAGTGTGATGAATAACGGA
 GGCTGCGACCACTTCTGCGAAAACACCGTGGGCGAGCTTTGAATGCGGCTGCCAAAAGGGCCACAAGCTAC
 TGACGGACGAGCGGACATGCCAAGACATTGACGAGTGTCTTTGAGCGGACCTGTGACCACATCTGCAT
 CACTCCCCCGGAGTTTCCAGTGCCTGTGCCCGGAGGCTACACACTCTACGGGACAACCCACTGCGGA
 GACGTGGATGAATGTAGCATGAACAACGGCAGCTGTGAGCAGGGCTGTGTCAACCAAGGGCAGCTACG
 AGTGTGTGTGCCACAGGGAGGAGGCTGCACTGGAATCAGAAGGACTGTGTGGAGATGAACGGGTGCT
 GTCTCGGTCCAAGGCTCTGCCAGGCCAGCTGTCTGTGGCAAGGTGGTGGAGTGGAAAACCTGCTTC
 CTGTCTCGCTGGGCCACAGTCTTTCATGCCAGATTGAAAAGCAGCTACATCCTGAGTGTGGTGTTC
 CAGGTCTCCAGGCAAGACACTGCCAAAACGCAATGGCACTAGCTCCAGTACAGGGCCCGCTGCTCAGA
 TGCCCCCACACCCCTATCAGACAGAAGGCCGCTTCAAGATCAGAGATGCCAAGTGCCATCTCCAGCCC
 CGCAGCCAGGAGCGAGCCAAGGATACCCTGAGGATCCCCTTTTAGACAACCTGCCACGTGACTTTTGTGA
 CCCTCAAGTGTGACTCCTCCAAGAAGAGGCGCCGAGGCCGCAAGTCCCCATCCAAGGAGGTGTCCACAT
 CACAGCAGAGTTTGGAGTGGAGATGAAGGTGGATGAGGCCTCAGGCACCTGCGAAGCAGACTGCATGCGG
 AAGCGTGCCGAGCAGAGCCTGCAAGCCGCCATCAAGATTCTGCGCAAGTCCATTGGTGGAAACAGTTCT
 ATGTCCAGGTCTGGGCACTGAGTACGAGGTGGCCAGCGCCAGCCAAAGCACTGGAGGGAACCGGGAC
 TTGCGGCATAGGCCAAATACTACAGGACGGCAAGTGTGTACCGTGTGCTCCTGGCACCTACTTCAGTGGT
 GACCCAGGCCAGTGTATGCCATGCGTGTGCGGAACCTACCAGGACATGGAAGGCCAGCTCAGCTGCACGC
 CATGCCCCAGCAGCGAAGGACTGGGTCTGGCTGGTGGCCGAAACGTATCCGAATGTGGAGGCCAGTGCTC
 TCCAGGCTACTTCTCAGCGGATGGGTTCAGCCTTGGCCAGGCCTGCCCTGTGGGCACATACCAGCCCGAG
 CCTGGGCGAACCGGCTGCTTCCCCTGTGGAGGCGGGCTGCTACCAAAACACAGGGTACCGCCTCTTTCC
 AGGACTGCGAGGCCAAAGTGCATTGCTCTCCCGGACACCACTACAATACCACCACCCACCGGTGTATCCG
 CTGTCCCGTGGGCACCTATCAGCCCGAGTTTGGCCAGAACCATTGCATCTCCTGTCCGGGCAACACCAGC
 ACCGATTTTGTAGGTTCCACCAACGTACACACTGCAAGAACCAGCACTGCGGCGGCGAAGTGGTGACT
 ACACAGGCTACATCGAGTCCCCAACTACCCTGGCGACTACCCAGCCAATGCAGAGTGTGTGTGGACAT
 CGCACCTCCCCAAAGCGCAGGATCCTAATCGTAGTCCCGGAGATCTTCTACCCATCGAGGACGAGTGT
 GGTGATGTCTGGTCAAGAAAAGAGTGCCTCGCCACGTCAGTACCACCTATGAGACGTGCCAGACCT
 ATGAGCGGCCATCGCCTTTACCTCCCGTTCCCGCAAACCTCTGGATCCAGTTCAAATCCAACGAAGCCAA
 CAGTGGCAAAGGGTTTCAAGTGCCCTATGTACCTATGATGAGGACTACCAGCAGCTAATAGAAGACATC
 GTGCGTGTGGGCGTTATATGCCTCGGAGAACCATCAGGAGATTTTGAAGACAAGAAGCTGATCAAGG
 CCCTCTTTGACGTGTGGCACACCCACAAAACCTACTTCAAATACACAGCCAGGAGTCCAAGGAGATGTT
 CCCCCGGTCTTTATCAAACCTTCTGCGTTCAAAGTGTCTCGGTTCTGCGGCCCTACAAA

ACCGTACGCGGCCGCTCGAGCAGAACTCATCTCAGAAGAGGATCTGGCAGCAAATGATATCTGGATT
 ACAAGGATGACGACGATAAGGTTTAA

Protein Sequence: >MR211141 representing BC080278
 Red=Cloning site Green=Tags(s)

MGAAAVRWHLYLLLALGARGRLVGGSGLPGAVDVDECSEGTDDCHIDAICQNTPKSYKCLCKPGYKGEGR
 QCEDIDECENDYNGGCVHDCINIPGNRYRCTCFDGFMLAHDGHNCLDVDECQDNNGGCQQICVNAMGSYE
 CQCHSGFFLSDNQHTCIHRNETCAVNNGGCDRTCKDTATGVRSCPVGFTLQPDGKTKKDINECLMNNG
 GCDHFCRNTVGSFECGCKGHKLLTDERTCQDIDECSEFERTCDHICINSPGFSFQCLCRRGYTLYGTTHCG
 DVDECSMNNNGSCEQGCVNTKGSYECVCPGRRRLHWNQKDCVEMNGCLSRKASAAQQLSCGKVGGVENCF
 LSLGLHSLFMPDSESSYILSCGVPGLQGKTLPKRNGTSSSTGPGCSDAPTTPIRQKARFKIRDAKCHLQP
 RSQERAKDTLRHPLLDNCHVTFVTLKCDSSKRRRGRKSPSKEVSHITAEFEVEMKVDEASGTCEADCMR
 KRAEQSLQAAIKILRKSIGRNQFYVQVLGTEYEVAQRPKALEGTGTCGIGQILQDGKCVCPAGTYFSG
 DPGQCMPCVSGTYQDMEQQLSCTPCPSSEGLLAGARNVSECGGQCPGYFSADGFKPCQACPVGTYQPE
 PGRGTGCFPCGGLLTKHTGTASFQDCEAKVHCSPGHHYNTTTHRCIRCPVGTYQPEFGQNHICSPGNTS
 TDFDGTNVTHCKNQHC GGELGDTGYIESPNYPGDYPANAECVWHIAPPPKRRILIVVPEIFLPIEDE
 GDVLMVRKSASPTSVTTYETCQTYERPIAFTSRSRKLWIQFKSNEANSKGQFQVPVYTYDEDYQQLIEDI
 VRDGRLYASENHQEILKDKKLIKALFDVLAHPQNYFKYTAQESKEMFPRSFIKLLRSKVSRLFRLPYK

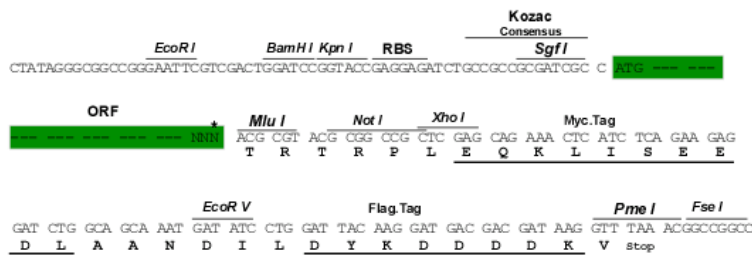
TRTRPLEQKLISEEDLAANDILDYKDDDDKV

Chromatograms: https://cdn.origene.com/chromatograms/mm9006_a06.zip

Restriction Sites: SgfI-MluI

Cloning Scheme:

Cloning sites used for ORF Shuttling:

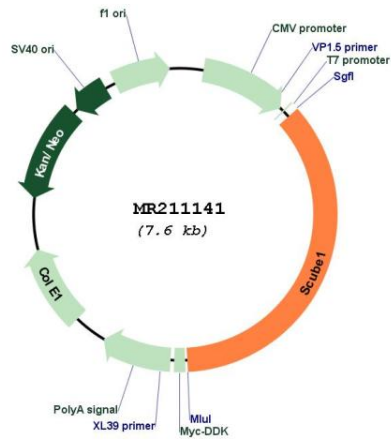


* The last codon before the Stop codon of the ORF

ACCN: BC080278

ORF Size:	2721 bp
OTI Disclaimer:	The molecular sequence of this clone aligns with the gene accession number as a point of reference only. However, individual transcript sequences of the same gene can differ through naturally occurring variations (e.g. polymorphisms), each with its own valid existence. This clone is substantially in agreement with the reference, but a complete review of all prevailing variants is recommended prior to use. More info
OTI Annotation:	This clone was engineered to express the complete ORF with an expression tag. Expression varies depending on the nature of the gene.
Components:	The ORF clone is ion-exchange column purified and shipped in a 2D barcoded Matrix tube containing 10ug of transfection-ready, dried plasmid DNA (reconstitute with 100 ul of water).
Reconstitution Method:	<ol style="list-style-type: none">1. Centrifuge at 5,000xg for 5min.2. Carefully open the tube and add 100ul of sterile water to dissolve the DNA.3. Close the tube and incubate for 10 minutes at room temperature.4. Briefly vortex the tube and then do a quick spin (less than 5000xg) to concentrate the liquid at the bottom.5. Store the suspended plasmid at -20°C. The DNA is stable for at least one year from date of shipping when stored at -20°C.
RefSeq:	BC080278.1
RefSeq Size:	5147 bp
RefSeq ORF:	2723 bp
Locus ID:	64706
Cytogenetics:	15 E1
MW:	188.7 kDa
Gene Summary:	Could function as an adhesive molecule and its matrix bound and soluble fragments may play a critical role in vascular biology.[UniProtKB/Swiss-Prot Function]

Product images:



Circular map for MR211141