

Product datasheet for **MR211115**

Mtmr4 (BC058364) Mouse Tagged ORF Clone

Product data:

Product Type:	Expression Plasmids
Product Name:	Mtmr4 (BC058364) Mouse Tagged ORF Clone
Tag:	Myc-DDK
Symbol:	Mtmr4
Synonyms:	AA596759; ESTM44; FYVE-DSP2; mKIAA0647; ZFYVE11
Mammalian Cell Selection:	Neomycin
Vector:	pCMV6-Entry (PS100001)
E. coli Selection:	Kanamycin (25 ug/mL)



[View online »](#)

ORF Nucleotide Sequence:

>MR211115 representing BC058364
 Red=Cloning site Blue=ORF Green=Tags(s)

TTTTGTAATACGACTCACTATAGGGCGGCCGGGAATTCGTCGACTGGATCCGGTACCGAGGAGATCTGCC
 GCC**GCGATCGCC**

ATGGGTGAGGAGGGCCCCCAGCCTGGAGTACATCCAAGCCAAGGATCTGTTCCCCCAGGAAGTGG
 TGAAGGAGGAGGAGAATCTTCAGGTACCCTTCATATTGCTGCAGGGTGAAGGAGTGAATTCCTGGGCCG
 GGCAACCGATGCCCTCATTGCCATCTCTAACTACCGGCTGCACATCAAGTTCAAAGACTCTGTCAAC
 GTGCCCTCCGGATGATTGACAGTGTGAAAGCCGTGATATGTTTCAGTTGCACATTGCCTGCAAGGACT
 CCAAAGTGGTGAAGTGCACCTTCTACTTTCAAGCAGTGCCAAGAGTGGCTCTCAAGGCTAAGCCGGC
 CACAGCGAGACCTGCCAAGCCCGAGGATCTCTTGCCTTTCCTACCATGCGTGGTGCCTGGGGCTGACC
 GAGGAGGACCAGCATACCCACCTGTGCCAGCCAGGAGAGCACATCCGATGTCGACAGGAGGCAGAGCTCG
 CAAGGATGGGTTTTGACCTGCAGATGTCTGGAGAGTCTCGCATATCAACAGCAATACAAGCTGTGCC
 TAGTTACCCCGAAGCTGCTGGTTCCTGTGTGGATCACAGATAAAGAGCTGGAGAAGCTGGCTTCTTTC
 CGCTCTTGAAACGCATCCCTGTTGTGGTATACAGACACCTGCGCAACGGGGCTGCCATTGCTCGCTGCA
 GCCAGCCTGAGATCAGCTGGTGGGGCTGGCGCAATGCTGATGATGAATACCTCGTACGTCATTGCCAA
 AGCCTGCGCCTTAGACCCAGGGACAAGGGCCAGTGGGGCTCCCTCAGCACTGGGACTAATGATGCCAGT
 GAGGCATGTGACACAGATTTTCGATTCTTCTGACTGCATGCTCTGGGGTGGAGAGCACAGCAGCCCCAC
 AGAAACTGCTGATCCTGGATGCACGGTCTACACAGCAGCCGTGGCTAACCGGGCCAAGGGTGGAGGCTG
 TGAATGTGAAGAATACTATCCGAAGTGTGAGGTCTTGTATGGGAATGGCAACATCCACGCCATCCGG
 AATAGCTTCCAGTACCTCCGGCTGTGTGAGCCAGATGCCAGATCCCAGCAACTGGTTGGTGGCAGTGA
 AGAGTACCAAATGGCTGCAGCACTTGTGAGTGTCTAAAAGCAGCTGTGTTGGTAGCCAATACGCTAGA
 TCGGGAAGGCCCGCCTGTGCTGGTACACTGCTCTGACGGCTGGGACCGTACACCACAGATTGTAGCCCTG
 GCCAAAATACTACTGGATCCATATTACAGGACTCTGGAGGGCTTCCAAGTGTAGTGGAGTCTGATTGGC
 TGGATTTTCGACACAAGTTGGAGACCGCTGTGGCCATCAGGAAAATGCAGAGGACCAAAAATGAACAGTG
 TCCTGTGTTCTCCAGTGGCTTATTCCGTGCATCAGTGTCTAAGCAGTTCCTTGCCTGTTTGGAGTTC
 AATGAAGCATTCTGGTCTGCATCCTGTGTGTCATGTCCGGCCCTGCACCTCTGGACAGCTGTTTATC
 TGCCTGCGTCATCTCCATGCACCCTTGGAGAGGAAAATATGGATCTTACCTTTCCTCAGTGGCTCAGAG
 CCAGGAATTTCTGGTCTTCTCTGGACAGTTACCTAAAACCAGATCCATGGATGATCTGCTCTCTGCC
 TGTGATACAAGCAGCCCCCTCACTCGTACTTCCAGCGACCCTAACCTGAATAACCACTCTCAGGAGTCA
 GAGGCAGCTGGAGCCCTGGCACAGCAGTCTGAAGGAGCAGAGACAGTATAGACTCTGGAGTTGGAAAG
 CCCACAGCTGACTGTGGGAGAAATGGGCCCTTCTCCTCCTCTGCCAGTAGCCAGAAAGAGTACTTGAGC
 AATAAACCTTTCAAGGGTCATAAAAGTTGTTCTCTTAGTTATAAGTTGCTTAATACTTCTGTGTCCTGGG
 AAATGAAGAGCAACACCTCTGACATCAAGGTCCTGGAAGAACTGAAGCACTGGCCCCGGACCCTCAGC
 CCAAGAGGAGCAGGGTAGGACTTCTGATGGCTTAGGGAAGCCACCTGAACAGTTTCTAGAGAAGGAAGCT
 GTCAGCTCACTCTGCAGTGTCTTAGCAAGTGTGGTGGAGCCTGTGATTTCTGAGCCTCCCCAGGACC
 CCCTAACAGGTAAGTCCCCAACAGCCCCACCTAGACTCCATGCAGATCTCGCCCTCAAGGTGCACTCCAGA
 TCACAGTCAGGGCAGCCTTTGCAACCCACCAAGTGTGGCCAGCCAACTCCAGAGCCAAATACTGACCTC
 CTCAGCCAAGATCCCCCTGGTTCTACGGCAAGTATCTCCACCAGGAACAGCCTAGCTCTGTGCCGGATC
 TGATCTACAAGAAGGAGGATGCTGGCAAGAGAGGAAGTAAAGATGGGCAGCTGTTGGAAAATCCTCGCTT
 TGGAAAATGCCATTGGAGTTGGCCGAAAGCCAAATTTCTCAGAGCCAGATCAGTGAAGTCTCATTTTTTA
 GGGTCAAAGTGGGACAGCTTCCAAGGGATGATGACTTCAATCCCAAGCGGAGAGACCCTCCTCGGCGCC
 TGCTTGCTTATGGCTGTTGTAGCAAGAGGCCGAGCAATAAGCATATTGAGCTGCAGGGCCCTGCCTGG
 GGGCCAGTGGGCTCAGAGAGAAGGGATGAAATCTCCTGTCTGTTT

ACGCGTACGCGGCCGCTCGAGCAGAACTCATCTCAGAAGAGGATCTGGCAGCAATGATATCCTGGATT
 ACAAGGATGACGACGATAAGGTTTAA

Protein Sequence: >MR211115 representing BC058364
 Red=Cloning site Green=Tags(s)

MGEEGPPSLEYIQAKDLFPPKELVKEEENLQVPFILLQGEVFLGRATDALIAISNYRLHIKFKDSVIN
 VPLRMIDSVESRDMFQLHIACKDSKVVRCHFSTFKQCQEWLSRLSRATARPAKPEDLFAFAYHAWCLGLT
 EEDQHTLHCQPGEHRCRQEAELARMGFDLQNVWRVSHINSNYKLCPSYPQKLLVPVWITDKELENVASF
 RSWKRIPVVVYRHLRNGAAIARCSQPEISWGWNRNADDEYLVTIAKACALDPGTRASGGSLSTGTNDAS
 EACRDTDFDSSLTACSGVESTAAPQKLLILDARSYTAAVANRAKGGGCEEEYYPNCEVLFMGMANIHAIR
 NSFQYLRAVCSQMPDPSNWL SALESTKWLQHL SVMLKAAVLVANTVDREGRPVLVHCSDGWDRTPOIVAL
 AKILLDPYYRTLEGFQVLVESDWLDFGHKFGDRCGHQENAEDQNEQCPVFLQWLDSVHQLLKQFPCLFEF
 NEAFLVHPVCHVRALHLWTAVYLPASSPCTLGEENMDLYLSPVAQSQEFSGRSLDRLPKTRSMDDL SA
 CDTSSPLTRTSSDPNLNHSQEVRSLEPWSSPEGAETVIDSGVSPQLTVGEMGLPPPLSSQKEYLS
 NKPFKGHKSCSLSYKLLNTSVSWEMKSNTSDIKVLEETEALAPDPSAQEEQGRSDGLGKPEQFLEKEA
 VSSLCSVSSKCGACDFPEPPQDPLTGTPQQPHLDSMQISPSRCTPDHSQGS LCNPPSVASQTPEPNTDL
 LSQDPPGSTASISHQEQPSSVPDLIYKKEDAGKRGSKNGQLLENPRFGKMPLELARKPISQSQISEFSFL
 GSNWDSFQGMMSFSPSGETTPRRLLAYGCCSKRPSNKHIRAAGPCLGGPVGSRERDEISCLF

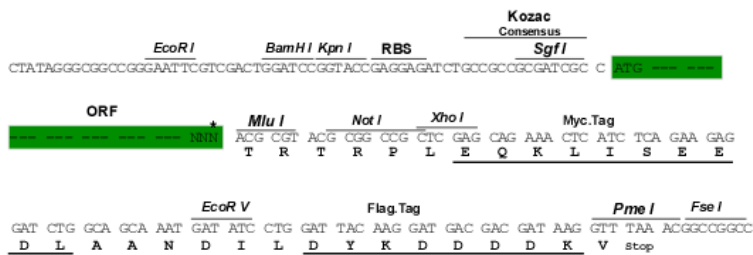
TRTRPLEQKLISEEDLAANDILDYKDDDDKV

Chromatograms: https://cdn.origene.com/chromatograms/mm9042_h05.zip

Restriction Sites: SgfI-MluI

Cloning Scheme:

Cloning sites used for ORF Shuttling:

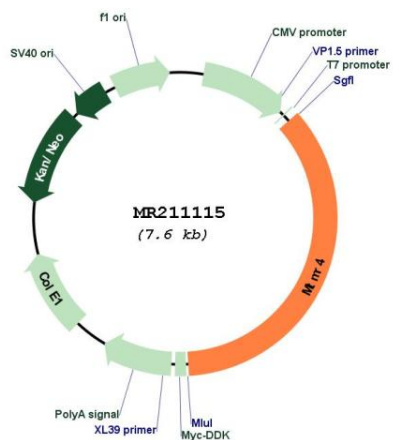


* The last codon before the Stop codon of the ORF

ACCN: BC058364

ORF Size:	2706 bp
OTI Disclaimer:	The molecular sequence of this clone aligns with the gene accession number as a point of reference only. However, individual transcript sequences of the same gene can differ through naturally occurring variations (e.g. polymorphisms), each with its own valid existence. This clone is substantially in agreement with the reference, but a complete review of all prevailing variants is recommended prior to use. More info
OTI Annotation:	This clone was engineered to express the complete ORF with an expression tag. Expression varies depending on the nature of the gene.
Components:	The ORF clone is ion-exchange column purified and shipped in a 2D barcoded Matrix tube containing 10ug of transfection-ready, dried plasmid DNA (reconstitute with 100 ul of water).
Reconstitution Method:	<ol style="list-style-type: none">1. Centrifuge at 5,000xg for 5min.2. Carefully open the tube and add 100ul of sterile water to dissolve the DNA.3. Close the tube and incubate for 10 minutes at room temperature.4. Briefly vortex the tube and then do a quick spin (less than 5000xg) to concentrate the liquid at the bottom.5. Store the suspended plasmid at -20°C. The DNA is stable for at least one year from date of shipping when stored at -20°C.
RefSeq:	BC058364.1
RefSeq Size:	4452 bp
RefSeq ORF:	2708 bp
Locus ID:	170749
Cytogenetics:	11 C
MW:	163.2 kDa
Gene Summary:	Dephosphorylates proteins phosphorylated on Ser, Thr, and Tyr residues and low molecular weight phosphatase substrate para-nitrophenylphosphate. Phosphorylates phosphatidylinositol 3,4,5-trisphosphate (PIP3) (By similarity).[UniProtKB/Swiss-Prot Function]

Product images:



Circular map for MR211115