

Product datasheet for **MR211096**

Tiam1 (BC065126) Mouse Tagged ORF Clone

Product data:

Product Type:	Expression Plasmids
Product Name:	Tiam1 (BC065126) Mouse Tagged ORF Clone
Tag:	Myc-DDK
Symbol:	Tiam1
Synonyms:	A1847750; D16lum10; D16lum10e
Mammalian Cell Selection:	Neomycin
Vector:	pCMV6-Entry (PS100001)
E. coli Selection:	Kanamycin (25 ug/mL)



[View online »](#)

ORF Nucleotide Sequence:

>MR211096 representing BC065126
 Red=Cloning site Blue=ORF Green=Tags(s)

TTTTGTAATACGACTCACTATAGGGCGGCCGGAATTCGTCGACTGGATCCGGTACCGAGGAGATCTGCC
 GCC**CGCATCGCC**

ATGGGAAACGCAGAAAGCCAAAATGTAGACCACGAGTTTTATGGAGAAAAGCATGCCAGCCTGGGGCGGA
 AGCACACTTCACGCTCCCTGCGGCTGTACACAAGACCCGGAGGACACGGCATGCTTCTCCGGGAAGGC
 GATCCACAGGAACTCTGAAGTGAGCACCCGGTCCAGCAGCACGCCAGCATCCCCAGTCCCTGGCTGAA
 AATGGCCTGGAGCCCTTCTCCAAGAAGGGCCCTAGACGACTTCGGGGACCCCATCTGGGTGGACCGAG
 TAGATATGGGCTTGAGACCCGTATCTTACACCGATTCTCCGTCCTCCAGCGTAGATGGCAGCATCGT
 CCTCACTGCAGCCTCTGTGCAGAGCATGCCAGACTCAGAGGAGAGCCGGCTTTACGGGGATGACGCTACG
 TACTTGGCTGAGGAGGCAGGAGGCAGTGTCCCTATACATCCAATGGGCCACATTCATGGAGACAGCGA
 GCTTTAAGAAGAAGCGCTCCAAATCTGCAGACATCTGGCGGGAGGACAGCCTGGAATTCCTACTCTAGA
 TCTGAGCCAAGAACATTTAACAAGCAACGAAGAAATCTTGGGTTCCGCGGAAGAGAAGGATTGCGAGGAG
 GCTCGGGGGATGGAACAGAGGGCAGTCCCGGCAGCTCAGCACCTGTACGCGAGCAACTCCCTGGGTG
 ACTTGTATGCTCAGAAAACCTCTGGGTGAAGGCTAATGGAGGACCGAGGAACAGATTCTCAAGCTACTG
 CCGAATTTGGTGTCCGATATCCCGATCTTGCAAAGCATAAGATGCCACCGGCTGCTGCCGAAGAGACT
 CCTCCGTACAGTAATTACAACACGCTTCCCTGTAGGAAGTCGCACTGTCTTCCGAGGGTGCCACCAACC
 CACAAATTAGCCTTAGCAAGAGCATGCAAGGCAGAAGAGCAAAAACACCCAGGATGTTAACACAGGCGA
 GGGCAGCGAGTTTGGCGACAGTGGGATCGAAGGGGCCACCACCGACACGGACCTTGTCCAGGAGATCC
 AATGCCACCAACTCAAGCTACTCGCCCCACAGGCCGAGCCTTGTGGCAGCGACAGCGGCAGCAGT
 CAACAGGGGATGCTGCGGCCAGGGGTGTACGAGAATTCAGGGGGAAGTGGAGATGAGTACACCAA
 CAGTGAGAGCCTGGAGGAGGCTGGCTCTGCGCACAGCGATGAGCAGAGCAGCGGAACCTCAGTCCCCCG
 GGCCAGTCGGACATCCTGCTAACGGCTGCGCAGGGCACTGTGCGGAAGGCTGGAGCGCTGCGAGTCAAGA
 ACTTCTGGTCCACAAGAAGAATAAGAAGGTGGAGTCGGCTACCCGGAGGAAGTGAAGCACTACTGGGT
 GTCCCTGAAAGGTTGCACGCTCTTTTTCTATGAGACTGATGGCAGGTCTGGGATAGACCACAACAGTGTG
 CCCAAGCAGCCGCTGGGTGGAGAACAGCATCGTGCAGGCTGTGCTGAGCACCCCAAGAAAGACTTCG
 TCTTCTGCCTCAGCAACTCCCTGGGTGACGCTTCTCTTCCAGACCACGAGCCAGACAGAGCTGGAGAA
 CTGGATCACCGCCATCCACTCTGCTGCGCAGCTGCCGTGCAAGGCACCACCACAAGGAGGACACGCTC
 CGCTCCTCAAGTCGAAATCAAGAAGCTGGAGCAGAAGATCGACATGGACGAGAAGATGAAGAAGATGG
 GGAGATCGAGCTGTCTCCGTCACCGACTCGAAGAAGAAGAAGACCATCCTAGACCAGATCTTCGTTTG
 GGAGCAGAACCTCGAACAGTTCAGATGGACCTGTTCCGATTCCGCTGTTACCTCGCCAGCTCCAGGGC
 GGGGAGCTGCCAAACCCAAAAGGCTGCTTGTCTTTGCGAGCCGGCCACGAAGGTGGCCATGGGCCGCC
 TCGGGATCTTCTCCGTGTATCTTTTATGCCCTGGTGGCAGCCCGGACTGGTGAGATCGGAGTGAGAAG
 GCGTACTCAGGCCATGTCCAGGTCTGCAAGCAAGCGAAGGAGCAGAAAGGACTTTCTGAAGTCTGTGCAT
 TCGATCCTGCGAGATAAACACAGAAGACAGCTCCTCAAACGGAAAGCCTTCCGTACGCCAGCAGTATG
 TCCCTTTGGAGGCAAGAGATTGTGTGCGCTTAAAGGCGCCAGGCCGGCCATGAGCAGGGCAGTGTCTGC
 CCCAAGCAAGTCTCTTGGGAGGAGGAGGGCGACTGGCCGAAACAGGTTTACCATCGATTCAAGCAGCC
 ATCTCAGCCAGCAGCCCGAGAAAAGAGCCCAGCAGCCCGCGTGGTGGGGACACTGACCGATGGGTAG
 AGGAACAGTTCGATCTTGTCTCAGTACGAGGAGCAGGATGACATCAAGGAGACAGACATCCTCAGTACGA
 TGACGAATTCTGTGAGTCCCTGAAGGGCGCCTCAGTGGACAGAGACCTTCAGGAGCAGCTTCAGGCTGCC
 TCCATCAGTCAGCGGGCCGAGGCCGAGAACCTCGATAGCCACGCCTCCCGCATGACACAGCTCAAGA
 AGCAAGCGGCCCTCTCGGGCATCAACGGGGCCTGGAGAGTGCAGGCGAGGAAGTCAATTTGGGTACGGCG
 CGAAGACTTGGCCCTCCAGGAACTGAACACGGAGATA

ACGCGTACGCGGCCGCTCGAGCAGAAACTCATCTCAGAAGAGGATCTGGCAGCAATGATATCTGGATT
 ACAAGGATGACGACGATAAGGTTTAA

Protein Sequence: >MR211096 representing BC065126
 Red=Cloning site Green=Tags(s)

MGNAESQNVDFEYGEKHASLGRKHTSRSLRSLSHKTRRRTRHASSGKAIHRNSEVSTRSSSTPSIPQSLAE
 NGLPEFSSQEGALDDFGDPIWVDRVDMGLRPVSYTDSSVTPSVDGSIVLTAASVQSMPSDEESRLYGDAT
 YLAEGRRQCPYTSNGPTFMETASFKKRKSADIWREDSLEFSLSDLQSEHLTSNEEILGSAEEKDCEE
 ARGMETEASPRQLSTCQRANSLGDLAQKNSGVKANGGPRNRFSSYCRNLVSDIPDLAKHKMPPAAEET
 PPYSNYNTLPCRKSHCLSEGATNPQISLSKSMQGRRAKTTQDVNTGEGSEFADSGIEGATDLDLLSRSS
 NATNSSYSPTGRAFGVSDSGSSSTGDAARQGVYENFRRELEMSTTNSELEEAGSAHSDEQSSGTLSSP
 GQSDILLTAAQGTVRKAGALAVKNFLVHKKNKVE SATRRKWKHYWVSLKGCITLFFYETDGRSGIDHNSV
 PKHAVVWENSIVQAVPEHPKDFVFCLSNLGDALFQTTSQTELENWITAIHSACAAAVARHHKEDTL
 RLLKSEIKKLEQKIDMDEKMKMGEMQLSSVTDSSKKTILDQIFVWEQNLEQFQMDLFRFRCYLASLQG
 GELPNPKRLLAFASRPVKVAMGRLGIFSVSSFHALVAARTGEIGVRRRTQAMSRASAKRRSRKDFLKS
 SILRDKHRRQLLKTESLPSAQYVYVFGGKRLCALKGARPAAMRAVAPSLSLGRRRRRLARNRFTIDSDA
 ISASSPEKEPQPAGGGDTRWVEEQFDLAQYEEQDDIKETDILSDDDEFCESLKASVDRDLQEQLQAA
 SISQRARRRRLDSHASRMTQLKKQAALSGINGGLESASEEVIWVRREDFAPSRLNTEI

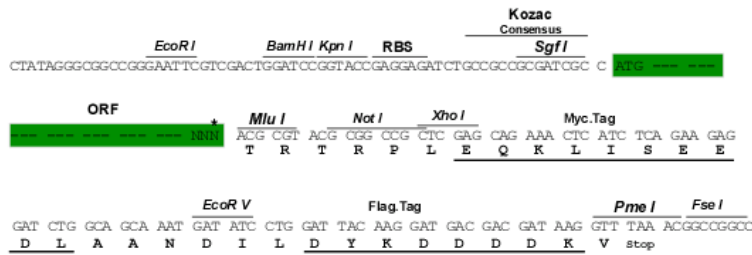
TRTRPLEQKLISEEDLAANDILDYKDDDDKV

Chromatograms: https://cdn.origene.com/chromatograms/mm9042_h04.zip

Restriction Sites: SgfI-MluI

Cloning Scheme:

Cloning sites used for ORF Shuttling:

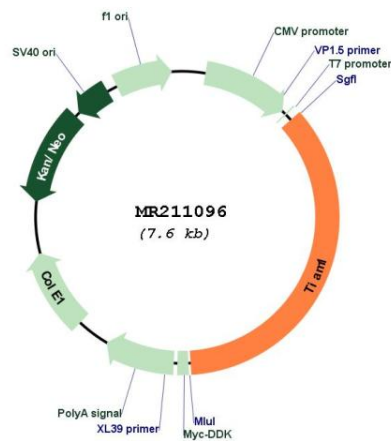


* The last codon before the Stop codon of the ORF

ACCN: BC065126

ORF Size:	2700 bp
OTI Disclaimer:	The molecular sequence of this clone aligns with the gene accession number as a point of reference only. However, individual transcript sequences of the same gene can differ through naturally occurring variations (e.g. polymorphisms), each with its own valid existence. This clone is substantially in agreement with the reference, but a complete review of all prevailing variants is recommended prior to use. More info
OTI Annotation:	This clone was engineered to express the complete ORF with an expression tag. Expression varies depending on the nature of the gene.
Components:	The ORF clone is ion-exchange column purified and shipped in a 2D barcoded Matrix tube containing 10ug of transfection-ready, dried plasmid DNA (reconstitute with 100 ul of water).
Reconstitution Method:	<ol style="list-style-type: none"> 1. Centrifuge at 5,000xg for 5min. 2. Carefully open the tube and add 100ul of sterile water to dissolve the DNA. 3. Close the tube and incubate for 10 minutes at room temperature. 4. Briefly vortex the tube and then do a quick spin (less than 5000xg) to concentrate the liquid at the bottom. 5. Store the suspended plasmid at -20°C. The DNA is stable for at least one year from date of shipping when stored at -20°C.
RefSeq:	BC065126.1
RefSeq Size:	5225 bp
RefSeq ORF:	2702 bp
Locus ID:	21844
Cytogenetics:	16 51.5 cM
MW:	191.5 kDa

Product images:



Circular map for MR211096