

## Product datasheet for **MR211081**

### Actn1 (NM\_134156) Mouse Tagged ORF Clone

#### Product data:

Product Type:	Expression Plasmids
Product Name:	Actn1 (NM_134156) Mouse Tagged ORF Clone
Tag:	Myc-DDK
Symbol:	Actn1
Synonyms:	3110023F10Rik; Actn1a
Mammalian Cell Selection:	Neomycin
Vector:	pCMV6-Entry (PS100001)
E. coli Selection:	Kanamycin (25 ug/mL)



[View online »](#)

ORF Nucleotide  
Sequence:

>MR211081 representing NM\_134156  
Red=Cloning site Blue=ORF Green=Tags(s)

TTTTGTAATACGACTCACTATAGGGCGGCCGGAATTCGTCGACTGGATCCGGTACCGAGGAGATCTGCC  
GCC**CGCATCGCC**

ATGGACCATTATGATTCCAGCAGACCAACGACTACATGCAGCCTGAAGAGGACTGGGATCGGGACCTGC  
TCCTGGATCCGGCTGGGAGAAGCAGCAGAGGAAGACGTTACAGCCTGGTGCAACTCCCACCTGCGCAA  
AGCGGGGACACAGATCGAGAACATCGAAGAGGACTTCCGAGATGGCCTGAAGCTCATGCTGCTCCTGGAG  
GTCATCTCAGGTGAACGCTTGGCCAAGCCAGAGAGAGGCAAGATGAGAGTGCACAAGATCTCCAACGTCA  
ACAAGGCCTTGGATTTTCATAGCCAGCAAAGGGTCAAGCTGGTGTCCATCGGAGCTGAAGAAATTGTGGA  
TGGAAATGTGAAGATGACCCTGGGCATGATCTGGACCATCATTCTCCGCTTTGCCATCCAGGACATCTCC  
GTGGAAGAGACTTCAGCTAAAGAAGGGTACTCCTGTGGTGTGAGAGGAAGACAGCCCCATAAAAAATG  
TCAACATCCAAAACCTCCACATCAGTTGAAAAGATGGTCTTGGTTTCTGTGCCTTGATCCACCGACACCG  
GCCCGAGTTGATTGACTATGAAAAGCTTCGAAAGGATGATCCACTCACAACCTGAACACGGCCTTTGAT  
GTGGCAGAGAGGTTCCCTGGACATCCCTAAGATGCTGGATGCTGAAGACATCGTCGGAACCTGCCCGCCAG  
ATGAGAAAAGCCATTATGACTTATGTGTCTAGCTTCTATCATGCCTTCTCTGGAGCCAGAAAGGCAGAAAAC  
AGCAGCCAATCGCATCTGCAAAGTGTGGCGGTCAATCAAGAGAACGAGCAGCTTATGGAAGACTATGAG  
AAGCTGGCCAGTGATCTGTTGGAGTGGATCCGCCGCCACCATCCCATGGCTGGAGAATCGGGTGCCTGAGA  
ACACCATGCATGCCATGCAGCAGAAGCTGGAGGACTTCCGAGACTATAGACGCCTGCACAAGCCGCCAA  
GGTGCAGGAGAAGTGCCAGCTGGAGATCACTTTAACACGCTGCAGACCAAGCTGCGGCTCAGCAACCGG  
CCTGCCTTCATGCCCTCCGAGGGCAGGATGGTCTCGGATATCAACAATGCCTGGGGCTGCCTGGAACAGG  
CCGAGAAGGGCTACGAGGAGTGGCTGTGAATGAGATCCGAGGGTATAGAGAGTTGGACCACTGGCAGA  
GAAGTTCCGGCAGAAGGCCTCCATCCATGAAGCCTGGACGGATGGCAAAGAAGCCATGCTTCGGCAGAAG  
GATTATGAGACAGCCACCCTGTCCGAGATCAAGGCCTTGCTCAAGAAGCACGAGGCTTTTGGAGTGATC  
TGGCTGCCACCAGGACCGCTGGAGCAGATTGCGGCCATTGCCAGGAGCTTAATGAGCTGGACTACTA  
TGACTCGCAAGTGTCAACGCTCGTTGCCAAAAGATCTGTGACCAGTGGGACAATCTAGGGGCTCTCACT  
CAGAAGCGGAGGGAAGCTTTAGAGCGAACAGAGAAGCTGCTGGAAACCATCGACCAGCTCTACTTAGAGT  
ACGCCAAGAGGGTGCACCCTTCAACAATTGGATGGAGGGAGCCATGGAGGACCTGCAGGACACCTTCAT  
CGTACATACCATCGAGGAGATCCAGGGACTGACCACAGCCCATGAGCAGTTCAAGGCCACCCTCCGGAT  
GCAGACAAGGAGCGCCTCGCCATTCTGGGCATCCACAATGAAGTGTCCAAGATCGTCCAGACCTATCATG  
TCAACATGGCAGGCACCAACCCCTATACAACCATCACGCCTCAGGAGATCAATGGCAAATGGGACCATGT  
ACGGCAGCTAGTCCCGGAGGGACAGGCTCTCACAGAGGAACATGCAAGGCAGCAGCACAATGAGAGG  
CTACGCAAACAGTTTGGCGCACAAAGCAATGTCATTGGGCCCTGGATCCAGACCAAGATGGAGGAGATTG  
GGAGGATTTCCATTGAGATGCACGGCACCTGGAGGACCAACTCAGCCACCTGCGGCAGTATGAGAAGAG  
CATCGTCAATTACAAGCCAAAGATTGACCAGCTGGAGTGCACCACAGCTCATCCAGGAGGCACTTATC  
TTTGACAATAAGCACACCAACTACAACATGGAGCATATCCGTGTGGGCTGGGAGCAGCTGCTCACCACCA  
TTGCCAGGACCATCAATGAAGTGGAGAACCAGATCTTGACCCGGATGCCAAAGGCATCAGCCAGGAACA  
GATGAACGAATTCGCGCCTCTTTCAACCCTTTGACCGGGATCACTCCGGCACGTTGGTCCCGAAGAG  
TTCAAAGCCTGCCTCATCAGCTTGGGTTATGATATTGGCAACGACCCCAAGGGAGAGGCAGAGTTTGCCC  
GAATCATGAGCATTGTAGACCCCAACCGCTTGGGGTAGTGACGTTCCAGGCCTTCATCGACTTTATGTC  
CCGAGAGACGGCAGATACTGATACTGCAGATCAGGTGATGGCTTCTTCAAGATCCTGGCTGGAGATAAG  
AATTACATCACAGAGGATGAGCTGCGCCGTGAGCTGCCCCCTGACCAAGCCGAGTACTGCATCGCAAGAA  
TGGCCCCCTACGCGGGCCCCGACTCCGTGCCCGGTGCTTTAGACTACATGTCTTCTCCACGGCACTGTA  
TGGCGAGAGCGACCTC

**ACGCGT**ACGCGGCCGCTCGAGCAGAAACTCATCTCAGAAGAGGATCTGGCAGCAAATGATATCTGGATT  
ACAAGGATGACGACGATAAGGTTTAA

**Protein Sequence:** >MR211081 representing NM\_134156  
Red=Cloning site Green=Tags(s)

MDHYDSQQTNDYMQPEEDWDRDLLLDPaweKQQRKtftawcNSHLRKAGTQIENIEEDFRDGLKLMllLlE  
 VISGERLAKPERGKMRVHKISNVNKALDFIASKGVKLVSIGAEIIVDGNVKMTLGMiWtIILRFAIQDIS  
 VEETSAKEGLLLWCQRKTAPYKVNVIQNFHISWKDGLGFCALiHRHrPELIDYgKLRKDDPLTNLNTAFD  
 VAERFLDIPKMLDAEDIVGTARpDEKAIMTYVSSFYHAFSGAQKAETAANRICKVLAVNQENEQLMEDYE  
 KLASDLLewIRRTIPWLENrVPENTMHAMQqKLEDFRDYRRlHKPPKVQEKcQLEINFNTLQTKLRlSNR  
 PAFMPSEGRMVSDINNAwGCLEQAeKGYEEwLLNEIRRLERLDHLAEKFRQKASiHEAWTDGKEAMLRQK  
 DYETATLSEIKALLKkHEAFESDLAAHQDRVEQIAAIAQELNELDYDSPSVNARCQKICDQWDLGALT  
 QKRREALERTEKlLETIDQLYLEYAKRAAPFNWMEGAMEDLQDTFIVHTIEEIQGLTTAHEQFKATLPD  
 ADKERLAILGIHNEVSKIvQTYHVNMAgTNPYTTITPQEINGKWDHVRQLVPRRDQALTEEHARQqHNER  
 LRKQFGAQANVIGPWIQTkMEEIGRISIEMHGtLEDQLSHLRQYEKSIVNYKPKIDQLECDHQLIQEALI  
 FDNKHTNYNMEHIRVgWEQLLTTIARTINEVENQILTRDAKGISQEQMNEFRASFNHFDRDHSGLGPEE  
 FKACLISLGYDIGNDPQGEAEFARIMSIvDPNRLGVVTFQAFIDFMSRETADTDTADQVMASFKILAGDK  
 NYITeDELRRRELPPDQAeyCIARMAPYAGPDSVPGALDYMSFSTALYGESDL

TRTRPLEQKLISEEDLAANDILDYKDDDDKV

**Chromatograms:** [https://cdn.origene.com/chromatograms/ja1257\\_f02.zip](https://cdn.origene.com/chromatograms/ja1257_f02.zip)

**Restriction Sites:** SgfI-MluI

**Cloning Scheme:**

Cloning sites used for ORF Shuttling:

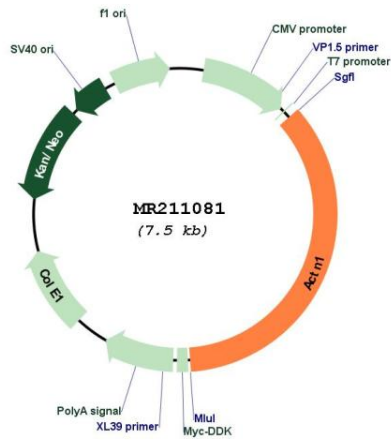


\* The last codon before the Stop codon of the ORF

**ACCN:** NM\_134156

<b>ORF Size:</b>	2676 bp
<b>OTI Disclaimer:</b>	The molecular sequence of this clone aligns with the gene accession number as a point of reference only. However, individual transcript sequences of the same gene can differ through naturally occurring variations (e.g. polymorphisms), each with its own valid existence. This clone is substantially in agreement with the reference, but a complete review of all prevailing variants is recommended prior to use. <a href="#">More info</a>
<b>OTI Annotation:</b>	This clone was engineered to express the complete ORF with an expression tag. Expression varies depending on the nature of the gene.
<b>Components:</b>	The ORF clone is ion-exchange column purified and shipped in a 2D barcoded Matrix tube containing 10ug of transfection-ready, dried plasmid DNA (reconstitute with 100 ul of water).
<b>Reconstitution Method:</b>	<ol style="list-style-type: none"><li>1. Centrifuge at 5,000xg for 5min.</li><li>2. Carefully open the tube and add 100ul of sterile water to dissolve the DNA.</li><li>3. Close the tube and incubate for 10 minutes at room temperature.</li><li>4. Briefly vortex the tube and then do a quick spin (less than 5000xg) to concentrate the liquid at the bottom.</li><li>5. Store the suspended plasmid at -20°C. The DNA is stable for at least one year from date of shipping when stored at -20°C.</li></ol>
<b>RefSeq:</b>	<a href="#">NM_134156.3</a>
<b>RefSeq Size:</b>	3705 bp
<b>RefSeq ORF:</b>	2679 bp
<b>Locus ID:</b>	109711
<b>UniProt ID:</b>	<a href="#">Q7TPR4</a>
<b>Cytogenetics:</b>	12 36.49 cM
<b>MW:</b>	103.5 kDa
<b>Gene Summary:</b>	F-actin cross-linking protein which is thought to anchor actin to a variety of intracellular structures. This is a bundling protein (By similarity).[UniProtKB/Swiss-Prot Function]

Product images:



Circular map for MR211081