

Product datasheet for **MR211048**

Manba (NM_027288) Mouse Tagged ORF Clone

Product data:

Product Type:	Expression Plasmids
Product Name:	Manba (NM_027288) Mouse Tagged ORF Clone
Tag:	Myc-DDK
Symbol:	Manba
Synonyms:	2410030O07Rik; B930014J03Rik; Bmn
Mammalian Cell Selection:	Neomycin
Vector:	pCMV6-Entry (PS100001)
E. coli Selection:	Kanamycin (25 ug/mL)



[View online »](#)

ORF Nucleotide Sequence:

>MR211048 representing NM_027288
 Red=Cloning site Blue=ORF Green=Tags(s)

TTTTGTAATACGACTCACTATAGGGCGGCCGGAATTCGTCGACTGGATCCGGTACCGAGGAGATCTGCC
 GCC**CGCATCGCC**

ATGCATCTTCACCTGCTCTTGATATTGGCGCTATTTCCGGCCGGTGCCTGGTGGCAGGTCCTAGCTACA
 GCCTGAGCGGGAGCTGGCGGGTGAAGCAACGGGAATGGCTCCCTGGAGCTACCGGGACTGTCCCGGCTA
 TGTGCACAGCGCCCTGCACCAGCACGGGCTGATCCAGGATCCTTACTACAGATTTAATGACCTGAACTAT
 AGATGGATTTCTTAGATAAAGTGGACCTACAGCACGGAATTTAAAATCCCTTTAATCTCAGTGAATGGC
 AGAAGGTAAAGTTGATCTTTGATGGAGTTGACACGGTTGCAGAAATCCTGTTCAACAATGTCACCATTGG
 GAAGACAGACAACATGTTCACTGGATACAGCTTTGACGTCACCAACGTAGTCAAAGACGTGAACTCCTTA
 AAGCTGCAGTCCGGTCCAGTGCAGTATGCAGAGTGCAGAGCAAGGCTCACACTAGCTACCGGGTGC
 CCCCAGAGTCCCCCGGTGGAGCAGAAGGTGAATGTCACGTCAACTTCATCCGAAAGGCACAGTGTTC
 CTTGACTGGGACTGGGGCCCTTCTTCCCTCTCAGGGAATCTGAAAGATGTTAGAATCGAAGCCTAT
 AACATTGCTCATCTGGATTACCTCACGTTTTTGCCAGTATATGATAACGTTCTCAGGCCTGGAATATTG
 AAATAGAGGCTTCTTTGATGTCGCCAGCTCGAAGTCCGTTAGTGGTCCAGGTGACAGTAGCCATCCCTCA
 ACTGAAAACACAGCAGACAAACGACATTGAACTTCAACAAGAGCAAAGGATTGTTAACTACTGGTCAAA
 ATTAGGAAGGACGTTGCTGTGGAGACCTGGTGGCTCGTGGACATGGGAACCAGACTGGGTACAACATGA
 CAATTCCTTTGCTCTGGATGGAGGCTTAAAAATTGAGAAAGCAGCAAGGTTTATTTTCAGGACAGTGA
 ACTGATAGAAGAGGGCATAAAAGGCTCCTGGTCTGAGTTTCTACTTCAAAATTAATGGGCTTCTATA
 TTTCTGAAAGGCTCAAATTGGATTCCAGCCGACTCCTTCCAAGACAAAGTCACTCCGATCGGCTGCAGC
 TCCTTTTCCAGTCCGTCGTGGATGCGAACATGAACACTCTGCGGTGTGGGGGGTGGCCTCACGAGCA
 GGATGAGTCTATGCGCTCTGTGATGAACCTGGGATAATGGTGTGGCAGGACTTTATGTTTGCCAGTGCC
 CTTTATCCAACCTGAGCCTGGCTTCTAGCCTCCGTGAGGAAAGAAGTCACTACCAGGTCAGGAGACTGA
 AATCTCACCCCTCCATCATATGGAGTGGTAATAATGAGAATGAAGTGGCTCTCAGCGTGAAGTGGTT
 CCACGTAATCCCAGGGACATGAAAACGTACATTGACGACTACGTGACCCCTATGTGAAGAACATCAGG
 AAGATTGCTTATCAGAAGACAAGAGCCGCTCTTTCATTGCATCCAGCCCAACCAACGGGATGAAAACCA
 TGGAGGAAGGCTGGATCTTACGACCCTATAGCATCCAGTATGGTGAATTCATTTTTATAACTATGC
 CGATGACTGCTGGAATTGGAAGATCTTCCAAAAGCTCGATTAGTGTCTGAATATGGCTACCAGTCTGG
 CCTTCTTTTAGCACACTAGAAAAGTCTCATCTCAGGAGGACTGGGCTTACAACAGCCGCTTCTCCCTTC
 ATCGGCAGCATCATGAAGATGGCAACCATCAGATGCTGCACCAGGTCAAGATGCATTTCAAACCTCCCCA
 GGGGACAGACCCATTGCGCACATTTAAAGACACTATCTACCTTACTCAGGTGATGAAGCCAGTGCATC
 AAAACAGAAACCGAGTTCTACCTGCGCAGCCGACGAGATAGTGGACGGAAAAGGCCACACCATGGGGG
 CACTGACTGGCAGCTGAACGATATCTGGCAGGCTCCTTCTGGGCTCTCTTGGTACGGAGGGAAATG
 GAAAATGCTGCATTACTTCGCTCGCGTCTTCTCGCTCCACTGTTGCCAGTGGGATTTGAAGATGAAGGT
 GTTTTTACGTCTATGGCGTCTCAGATCTTCAAAAGACCACCACACGACGCTCACCGTGAAGGCTCCATC
 ACTGGAGCTCCCCGAAGCCTTTGTGCTCCCTCGTGAATCAAGTATTGTGGTTAAGGCCGGAGAGGCAGT
 GGTCTGTTCCAGATGCCGGTGTCTGAGCTGCTGAAGAGATGCAGGGGATGCACGAGGGAGACATCGCTG
 GTCTCTTTTACTTTTCAACTGACAAAGAACTTTCAGCCCAACCAACTACCACTTCTGCTCCTCCCTGA
 AGGACGCTAAAGGCTGCTCAGGCCAACATCACTGTCAACATCTCTCAGAAGGGCAATGTTTTGTTTT
 TGATCTGGAAACGTCTGCGGTGCTCCCTTTGTTGGTTGGATGTAGGAAGTATCCCCGGGAGATTTAGT
 GATAACGGCTTCTCATGATTCGGAAGAACTCTCGGTACTGTTTTACCCTTGGAAGCCACCAGCAAGA
 GTGAGTGCAGCAGGCCCTCAGCGTCACCTCCCTGACGGATACCTAC

ACGCGTACGCGGCCGCTCGAGCAGAACTCATCTCAGAAGAGGATCTGGCAGCAATGATATCTGGATT
 ACAAGGATGACGACGATAAGGTTTAA

Protein Sequence: >MR211048 representing NM_027288
 Red=Cloning site Green=Tags(s)

MHLHLLILALFRAGCVVAGPSYSLSGSWRVSNNGSLELPATVPGYVHSALHQHGLIQDPYYRFNDLNY
 RWISLDNWTYSTEFKIPFNLSEWQKVKLIFDGDVDTVAEILFNNVTIGKTDNMFTGYSFDVTNVVKDVNSL
 KLQFRSAVQYAEQSKAHTSYRVPPECPPVEQKGECHVNFIRKAQCSFSWDWGPSFSPSQGIWKDVRIEAY
 NIAHLDYLTFLPVYDNASQAWNIEIEASFDVASSKSVSGQVTVAIPLKTKQQTNDIELQQEQRIVKLLVK
 IRKDVAVETWVPRGHGNTGYNMTILFALDGGGLKIEKAAKVYFRVTVQLIEEGIKGSPGLSFYFKINGLPI
 FLKGSNWIPADSFQDKVTSRDLQLLFQSVVDANMNTLRVWGGGIYEQDEFYALCDELGIMVWQDFMFASA
 LYPTPEGFLASVRKEVTYQVRRLLKSHPSIIWSGNNEVALSVNWFHVNPRDMKTYIDDYVTLVYKNIR
 KIVLSEDKSRPFIASSPTNGMKTMEEGWISYDPYSIQYGDIFHYNYADDCWNWKIFPKARLVSEYGYQSW
 PSFSTLEKVSSQEDWAYNSRFLHRQHEDGNHQLHVKMHFKLPQGTDLRFTKDTIYLTQVMQAQCI
 KTETEFYLRSRSEIVDGKHTMGALYQLNDIWQAPSWASLEYGGKWKMLHYFARRFFAPLLPVGFEDEG
 VFVYVYVSDLHKDHHTQLTVRLHHWSSPKPLCSLVNSSIVVKAGEAVVLFQMPVSELLKRCRGCTRETCV
 VSFYFSTDKELFSPNTYHFLSSLKDAKGLLEANITVNISSQKGNVVFVDLETSAVAPFVWLDVGSIPGRFS
 DNGFLMIRKKLSVLFYFPWKPTSKSELQQAFSVTSLTDTY

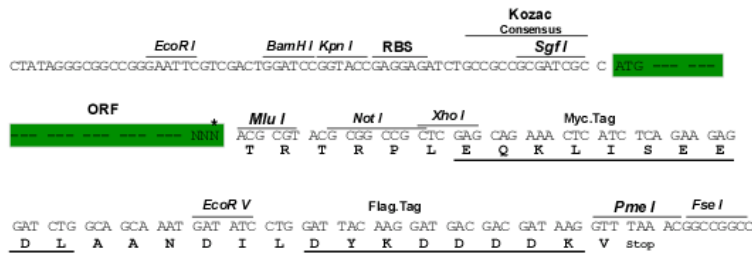
TRTRPLEQKLISEEDLAANDILDYKDDDDKV

Chromatograms: https://cdn.origene.com/chromatograms/mm9097_e08.zip

Restriction Sites: SgfI-MluI

Cloning Scheme:

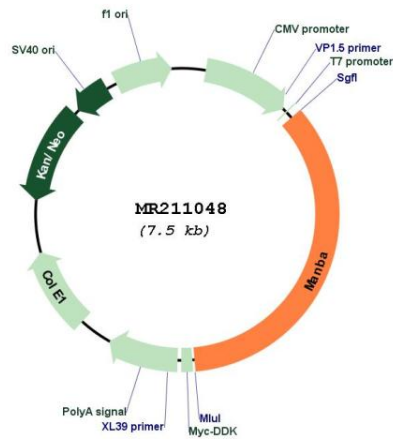
Cloning sites used for ORF Shuttling:



* The last codon before the Stop codon of the ORF

ACCN:	NM_027288
ORF Size:	2637 bp
OTI Disclaimer:	The molecular sequence of this clone aligns with the gene accession number as a point of reference only. However, individual transcript sequences of the same gene can differ through naturally occurring variations (e.g. polymorphisms), each with its own valid existence. This clone is substantially in agreement with the reference, but a complete review of all prevailing variants is recommended prior to use. More info
OTI Annotation:	This clone was engineered to express the complete ORF with an expression tag. Expression varies depending on the nature of the gene.
Components:	The ORF clone is ion-exchange column purified and shipped in a 2D barcoded Matrix tube containing 10ug of transfection-ready, dried plasmid DNA (reconstitute with 100 ul of water).
Reconstitution Method:	<ol style="list-style-type: none">1. Centrifuge at 5,000xg for 5min.2. Carefully open the tube and add 100ul of sterile water to dissolve the DNA.3. Close the tube and incubate for 10 minutes at room temperature.4. Briefly vortex the tube and then do a quick spin (less than 5000xg) to concentrate the liquid at the bottom.5. Store the suspended plasmid at -20°C. The DNA is stable for at least one year from date of shipping when stored at -20°C.
RefSeq:	NM_027288.3 , NP_081564.3
RefSeq Size:	3688 bp
RefSeq ORF:	2640 bp
Locus ID:	110173
UniProt ID:	Q8K2I4
Cytogenetics:	3 62.65 cM
MW:	100.8 kDa
Gene Summary:	Exoglycosidase that cleaves the single beta-linked mannose residue from the non-reducing end of all N-linked glycoprotein oligosaccharides.[UniProtKB/Swiss-Prot Function]

Product images:



Circular map for MR211048