

## Product datasheet for **MR211046**

### **Pkn3 (NM\_153805) Mouse Tagged ORF Clone**

#### **Product data:**

Product Type:	Expression Plasmids
Product Name:	Pkn3 (NM_153805) Mouse Tagged ORF Clone
Tag:	Myc-DDK
Symbol:	Pkn3
Synonyms:	AW209115; BC034126
Mammalian Cell Selection:	Neomycin
Vector:	pCMV6-Entry (PS100001)
E. coli Selection:	Kanamycin (25 ug/mL)



[View online »](#)

**ORF Nucleotide Sequence:**

>MR211046 representing NM\_153805  
 Red=Cloning site Blue=ORF Green=Tags(s)

TTTTGTAATACGACTCACTATAGGGCGGCCGGGAATTCGTCGACTGGATCCGGTACCGAGGAGATCTGCC  
 GCC**CGGATCGCC**

ATGGAACACCCAAAGCCTGGGACTGGCCAGAGAGCCCCAAGGATGAGAAAGAGATGGTCCGCCAGCCA  
 TCCAGAAGGAGCTGAAGATCAAGGAGGGCATGGAGAACATGCGGCGCGTGGCCACAGACCCAGCCACCT  
 GGGTCATGTGCAGCAACTGCTTAGGGCCTCCAACCGCCGCTGGAGCAGCTGCATGGCGAGCTTCGGGAG  
 CTGCATGCCCAAGTTCTGCTGCCAGCCTCAGCCGAGCCAGTGACCTCGGAACCCAGCCGCGGGCGGAGC  
 AGTCCAGGGCTCGGCTCTCGGAGCTTTACATAGGCAGCTGCAGGTAGAGCTAAAGGTAAGCAGGGGGC  
 TGAGAATATGATTCACACGTGTGCCAGCGGCACCCCCAAGGAGAGGAAGCTCCTGGCGGCTGCCAGCAG  
 ATGTTAAAGGACAGTCAACTGAAGGTGGCCCTGCTCCGGATGAAGATAAGCAGCCTGGAGTCCAGTGGCT  
 CTCAGAGCCAGGCCCGACTTGTGTCAGAGGAGCTGCAGCACCAGCTTCGAGTAGAGGCTGCTGTGGC  
 TGCAGGTGCCAAGAATGTGGTGAAGCTGCTTGGTGGCCAGAGGATGCAGGACCGAAAGGCACTGGCCGAG  
 GCCAGGCCAGCTCCAGGAATCTCCAGAAGCTGGACCTCCTACGGCTGGCCCTGGAATTGCTGCTGG  
 AGAGGTTGCCCTCCACCCACTCTACGTAGCAGGGTGACCCAAGAACTTTGGATGGCAATGCTTGGGAA  
 CCCCCAACCTTTGGGGCACTTGTGAAACCTATTGCCTTGACAGGGCACTGCAGGTTCCGCTCCTGGGC  
 TGCAAAGATCTGCTGGTAGCTGTGCCTGGACGGTCTCCATGGCTGTCTTGGCAGGTAGCCCTTCTGAAA  
 GCTGGCTCCGAACAAGGTCCCGGCAGCAGCGTGGTGGAGGCGAACTGGCCAGTGAGGTAAGTGGCTGTGT  
 GAAGGTTGACAAATCGTGTGTGGCCAGACAGGATGGGGACTGGTGGCTGAGAAAATCCTGGGACCAGAGT  
 TTTATCATCTCCTTGACCGAGCTCGCAGCTGGAGATTGGGGTCACTGGCGGGACTGGCAGAGTTGT  
 GTGGTGTGGCGTTTCTGAAGCTTGAGGACTTCTGGACAATGCCTGTACCAGCTTCTCTCAGCTGGT  
 GCCTCAGGGGCGGCTCTTTGCCAGGTACCTTCTGCGAGCCTGTATTGAAAGGAGGCCTCGGCTGCAG  
 AGGCAGAGATGCATTTCTTAAGCGGAGAGGCCGGGATTTTCATGAGAGCTTCCAGATGAACCTCAGCA  
 TGGCAGCCTGGGGCGTCTGGTTCATGAGCTTGTGCCCCCTGCAGCTCACCAAACACAGCCAGTCCCC  
 TAAAGGGCGCCCTTAACAGCGGTCTGTGGACCCCCAGTGTGCTTCCCCGAGTAACTTCTGCCCATG  
 AAGACGCTCTCAAAGAAGACACGAAGCCTCTCCCAAGCCCCGCGCTCTATCTCAAAGAACCAGCCC  
 CAGGGACTCCTTGTACCAAGCGCCCCACATGGACCCTAGACCTGCAGTAGTGCCCGCCTGGCAGCCTT  
 ATCCACAAGGAAACCCCCAGACTTCAAGACTTCCGATGTTGGTGTGCTGGGTGGGGCACTTTGGG  
 AAGGTCCTCCTGGTCCAGTACAAAGGAACAGGAAATACTACGCTATCAAGGCGTTGAAGAAGCAGGAAG  
 TGCTAGGCCGGGATGAGATTGACAGCCTATACTGTGAGAAGCGGATCCTGGAGACTGTGGGGCGTACAGG  
 GCACCCCTTCTGCTCTCTCCTTGCCTGTCTGCAGACCTCCAGCCATGCCTGCTTTGTTACTGAGTTT  
 CTGCCCGGAGGAGACCTCATGGCGCAGATTATGAGGATGTCTTCTGAGCCCCAGGCCTGCTTCTACC  
 TGGCCTGTGTGGTTCTGGGGCTGCAGTTCTACACGAGAAGAGGATCATTTACAGGGATCTGAAATTGGA  
 TAATCTGCTACTGGATGCCAGGGTTTCTCAAGATTGCAGACTTTGGACTATGCAAGGAAGGAATTGGC  
 TTTGGTGACCGGACCAGCACGTTCTGTGGCACCCTGGAGTTCTGGCCCCGAGGTTTTGACTCAGGAGG  
 CTTACACGCGTGTGTGGACTGGTGGGGCTGGGTGTGCTGCTCTATGAGATGTTAGTGGGTGAGTGTCC  
 ATTCGCGGGGACACAGAAGAGGAGGATTTTGAATGCATCGTCAGTGTGATGTCCCATGTCCCCACTTT  
 CTGTGAGTCAAGGGCTCGAACTCATTCAAGAGCTCCTCCAGAAGTCCCCAGAGAAGCGTCTAGGGGACG  
 GAGAACGGGACGCCGAGGAGATCAAGGTTCAACCATTTCTCAGGACCACCAACTGGCAGGCCTTGTGGC  
 CCGCACCGTCCAGCCTCCCTTCTGCTACTCTGTGGCCCTGCAGACCTTCGTTACTTCGAGGGAGAG  
 TTCACAGCCTGCCTCCAACCTGACCCACCAGTCTCCAGAGCTCCCTCACTGCTCGCCAACAGGCTG  
 CCTTCGGGACTTTGACTTCGTGTCTGAGCAGTTCCTGGAGTCC

**AGCGGACCG**ACGCGTACGCGGCCGCTCGAGCAGAACTCATCTCAGAAGAGGATCTGGCAGCAAATGATATCC  
 TGGATTACAAGGATGACGACGATAAGGTTTAA

Protein Sequence: >MR211046 representing NM\_153805  
 Red=Cloning site Green=Tags(s)

MEHRKPGTGQRAPKDEKEMVRRAIQKELKIKEGMENMRRVATDRRHLGHVQQLLRASNRRLLEQLHGELRE  
 LHAQVLLPASAEPVTSEPPRAEQSRARLSEALHRQLQVELKVKQGAENMIHTCASGTPKERKLLAAAQQ  
 MLKDSQLKVALLRMKISSLESSGSPGPDLLAEELQHRLRVEAAVAAGAKNVVLLGGQRMQDRKALAE  
 AQAQLQESSQKLDLLRLALELLERLPPTHSLRSRVTELWMAMLGPNQPLGTLVKPIALTGTLQVRLLG  
 CKDLLVAVPGRSPMAVLGSPSESWLRTRSRQQRGGGELASEVLAVLKVDNRVVGQTGWGLVAEKSWDQS  
 FIISLDRARELEIGVHWRDWRQLCGVAFLEDFLDNACHQLSLSLVPQGRLEFAQVTFCEPVIERRPRLQ  
 RQRCIFSKRRGRDFMRASQMNL SMAAWGRLVMSLLPPCSSPNTASPPKGRPSTAVCGTPSAASPSNFLPM  
 KTL SKEDTKPPKPPRLYLQEPAPGTPCTKRPHMDPRPAVVPALAAALSTRKPPRLQDFRCLAVLGRGHFG  
 KVLLVQYKGTGKYAIAKALKKQEVLRDEIDSLYCEKRIETVGRTGHPFLLSLLACLQTS SHACFVTEF  
 LPGDLM AQIHEDVFPEPQACFYLACVVLGLQFLHEKRIIYRDLKLDNLLDAQGF LKIADFG LCKEGIG  
 FGDRTSTFCGTPFLAPEVLTQEAYTRAVDWWGLGVLLYEMLVGECPPFGDTEEEVFECIVSADVPCPHF  
 LSVQGLELIQKLLQKSPEKRLGAGERDAEEIKVQPFRTTNWQALLARTVQPPFVPTLCGPADLRYFEGE  
 FTSLPPTLTPPVSSQLTARQAAFRDFDFVSEQFLES

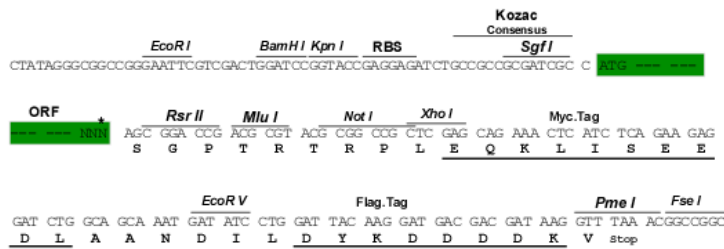
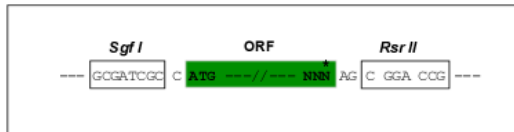
SGP TRTRPLEQKLISEEDLAANDILDYKDDDDKV

Chromatograms: [https://cdn.origene.com/chromatograms/mm9009\\_e05.zip](https://cdn.origene.com/chromatograms/mm9009_e05.zip)

Restriction Sites: SgfI-RsrII

Cloning Scheme:

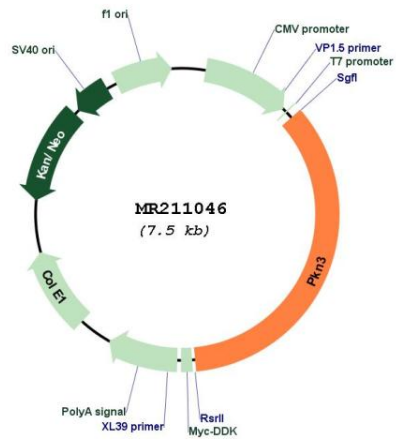
Cloning sites used for ORF Shuttling:



\* The last codon before the Stop codon of the ORF

<b>ACCN:</b>	NM_153805
<b>ORF Size:</b>	2634 bp
<b>OTI Disclaimer:</b>	The molecular sequence of this clone aligns with the gene accession number as a point of reference only. However, individual transcript sequences of the same gene can differ through naturally occurring variations (e.g. polymorphisms), each with its own valid existence. This clone is substantially in agreement with the reference, but a complete review of all prevailing variants is recommended prior to use. <a href="#">More info</a>
<b>OTI Annotation:</b>	This clone was engineered to express the complete ORF with an expression tag. Expression varies depending on the nature of the gene.
<b>Components:</b>	The ORF clone is ion-exchange column purified and shipped in a 2D barcoded Matrix tube containing 10ug of transfection-ready, dried plasmid DNA (reconstitute with 100 ul of water).
<b>Reconstitution Method:</b>	<ol style="list-style-type: none"><li>1. Centrifuge at 5,000xg for 5min.</li><li>2. Carefully open the tube and add 100ul of sterile water to dissolve the DNA.</li><li>3. Close the tube and incubate for 10 minutes at room temperature.</li><li>4. Briefly vortex the tube and then do a quick spin (less than 5000xg) to concentrate the liquid at the bottom.</li><li>5. Store the suspended plasmid at -20°C. The DNA is stable for at least one year from date of shipping when stored at -20°C.</li></ol>
<b>RefSeq:</b>	<a href="#">NM_153805.2</a>
<b>RefSeq Size:</b>	2948 bp
<b>RefSeq ORF:</b>	2637 bp
<b>Locus ID:</b>	263803
<b>UniProt ID:</b>	<a href="#">Q8K045</a>
<b>Cytogenetics:</b>	2 B
<b>MW:</b>	98.3 kDa
<b>Gene Summary:</b>	Contributes to invasiveness in malignant prostate cancer.[UniProtKB/Swiss-Prot Function]

Product images:



Circular map for MR211046