

Product datasheet for **MR211005**

Epb4.111 (NM_001003815) Mouse Tagged ORF Clone

Product data:

Product Type:	Expression Plasmids
Product Name:	Epb4.111 (NM_001003815) Mouse Tagged ORF Clone
Tag:	Myc-DDK
Symbol:	Epb4.111
Synonyms:	4.1N; Epb4111; mKIAA0338; NBL1
Mammalian Cell Selection:	Neomycin
Vector:	pCMV6-Entry (PS100001)
E. coli Selection:	Kanamycin (25 ug/mL)



[View online »](#)

ORF Nucleotide Sequence:

>MR211005 representing NM_001003815
 Red=Cloning site Blue=ORF Green=Tags(s)

TTTTGTAATACGACTCACTATAGGGCGGCCGGAATTCGTCGACTGGATCCGGTACCGAGGAGATCTGCC
 GCC**CGCATCGCC**

ATGACAACAGAGACAGGTCCCGATTCTGAGGTGAAGAAGGCTCAGGAGGAGACTCCACAGCAGCCCGAGG
 CTGCCGACAGTGTGACCAACCCCGGTGACCCCGGGGCCACAGCCACCCAGAGACCAATTCGAATGAGAA
 GCATCTGACCCAGCAGGACACGAGGCTGCTGAACAGAGCCTGGATATGGACGATAAGGATTACAGTGAG
 GCCGATGGCTGTGAGAGAGGACACGCCAGTAAAGGCCAGAAGTACCTCAGAAGATTGCCAAGAAGT
 TCAAGAGTGCCATATGCCGCTCACCTGCTCGATGCTTCTGAGTATGAGTGTGAAGTGGAGAAGCACGG
 CCGGGGCCAGGTGCTGTTTGACCTGGTCTGTGAGCACCTAACCTCCTGGAGAAGGACTACTTCGGTCTG
 ACCTACTGTGATGCTGACAGCCAGAAGAATTGGCTGGACCCCTCAAGGAAATCAAGAAGCAGATCCGGA
 GTAGCCCTTGGAACTTTGCCCTTACAGTCAAGTTCTACCTCCTGACCCAGCTCAGTGACAGAAGACAT
 CACAAGTACTACCTGTGCTGCAGCTGAGGGCAGACATTATCACAGGCCCTGCCTTGTCTCTTTGTC
 ACGCATGCCCTTCTGGGCTCCTACGCTGTGACGGCTGAACTGGGTGACTATGATGCCGAGGAACAGTGG
 GCAACTATGTGAGTGTGCTCCGCTTCCGCCAAACCCAGACCCGGGAGCTGGAGGAGAGGATCATGGAGT
 GCATAAGACATACAGGGCATGACCCCGGGCGAGGCAGAGATCCACTTCTGGAGAACGCCAAGAAGCTC
 TCCATGTATGGAGTTGACCTGCATCACGCTAAGGATTCTGAGGGCATCGATATCATGCTAGGTGTCTGTG
 CCAATGGCTGCTCATCTACCGGACCGCTGAGAATCAACCGCTTTGCCGCGCCCAAGATTCTCAAGAT
 CTCCTACAAGAGGAGTAACTTCTACATCAAGATCCGGCTGGGGAGTATGAGCAGTTTGAGAGCACCATC
 GGCTTCAAGTCCCTAACACCGCTCAGCAAGCGTTGTGGAAGTCTGCATCGAGCACCACACGTTCT
 TCCGGCTGGTGTACCGGAGCCCAACCAAGGGCTTTCTGGTGTGGGCTCCAAGTTCGGTACAGTGG
 GAGGACGCAAGCCAGACCCGCAAGCCAGTGCCTTATCGACCGACCCGCCCTTCTTTGAACGTTCT
 TCCAGCAAACGCTATACCATGTCCCGCAGCCTTGATGGAGAGTTCTCCCGCCTGCCTCAGTCAGTGAGA
 ATCACGATGCAGGGCTGACGGTGACAAGCGGAAGATGACGCCGAGTACGGGGGACGCCGATCAGAGGC
 TGAAGAAGGAGAGGTGAGGACACCCACCAAGATCAAGGAGCTGAAGTTCTGGACAAGCCAGAGGATGTC
 TTGTTGAAGCACCAGGCCAGCATCAATGAACTCAAGAGGACCTGAAGGAGCCCAACAGCAAAGTATCC
 ACCGGGATCGAGACTGGGATCGGGAGCGCAGGCTGCCCTCGTCGCTGCCTCCCCCTCCCCAAGGGCAC
 CCCGAAAAAGCCAGTGAGAGAGCAGGGCTGAGGGAGGGCTCAGAGGAGAAAGTCAAACCACCACGCCCA
 CGTGCCCCAGAGAGCGACACGGGAGATGAGGACCAGGACCAGGAGAGGGACGCCGATTCCTGAAGGACA
 ACCACCTGGCCATTGAGCGCAAGTGTCCAGCATTACGGTCAGCTCCACGTCCAGCCTGGAGGCTGAGGT
 GGACTTACGGTTATTGGTGACTACCATGGCGGCCTTTGAAGACTTCTCCCGAAGCCTCCCTGAGCTT
 GATCGGGATAAAAGTGAAGTCTGAGACAGAGGGCCTGGTGTTCGCCCGGGATCTCAAGGGGCCCTCCAGCC
 AAGAGGATGAATCTGGGGCCTCGAGGACAGCCCGGATCGAGGGGCTGTTCACCTCCAGAAATGCCCA
 GTTTGAGTCTGTGAAAGCAGAAACCATGACCGTCAGCAGTCTGGCAATCAGGAAGAAGATTGAGCCAGAG
 GCCATGCTGCAAAGCAGAGTCTCCGCTGCAGACAGCACCAGGTTGATGGGGTACTCCAATGGTGAAG
 ACTTCATGACAACTCCCCCTGCATCACCACAGAGACCATCTCAACCACCATGGAGAACAGTCTCAAGTC
 CGGGAAGGGGGCAGCTGCCATGATCCCAGGCCACAGACGGTGGCCACGGAATCCGTTCTCTTTACCCG
 ATCATCGGAAAAGATGTCCTCACCAGCAGTACGGCGCCACCGCGAAAACCTCTCAACCTCACCACCA
 CCCATGTACCAAAGTGTGAAGGGAGGTTTTCTGAGACAAGGATCGAAAAGCGAATCATCATTACTGG
 GGATGAAGATGTCGATCAAGACCAGGCCCTGGCTTTGGCCATCAAGGAAGCCAAACTACAGCATCCAGAC
 ATGCTGGTAACCAAAGCTGTTGTCTATAGAGAAACAGACCCATCCCCGGAGGAGAGACAAGAAGCCAC
 AGGAATCC

ACGCGTACGCGGCCGCTCGAGCAGAACTCATCTCAGAAGAGGATCTGGCAGCAAATGATATCCTGGATT
 ACAAGGATGACGACGATAAGGTTTAA

Protein Sequence: >MR211005 representing NM_001003815
 Red=Cloning site Green=Tags(s)

MTTETGPDSEVKKAQEETPQQPEAAAAVTTPVTPAGHSHPETNSNEKHLTQQDTRPAEQSLDMDKDYSE
 ADGLSERTTPSKAQKSPQKIAKKFKSAICRVTLLDASEYECEVEKHGRGQVLFDLVCEHLNLLKDYFGL
 TYCDADSQKNWLDPSKEIKKQIRSSPWNAFTVKFYPPDPAQLTEDITRYYLCLQLRADIITGRLPCSFV
 THALLGSYAVQAELGDYDAEEHVGNYVSELRFAPNQTRLEERIMELHKTYRGMTPGEAEIHFLNNAKLL
 SMYGVDLHHAADSEGIDIMLGVCANGLLIYRDRLRINRFAPWKILKISYKRSNFYIKIRPGEYEQFESTI
 GFKLPNHRSAKRLWKVCEIHHHTFFRLVSPPEPPKGLVMGSKFRYSGRTQAQTRQASALIDRPAPFFERS
 SSKRYTMSRSLDGEFSRPASVSENHDAGPDGDKREDDAESGRRSEAEEGEVRTPTKIKELKFLDKPEDV
 LLKHQASINELKRTLKEPNKSLIHRDRDWRERRLPSSPASPSPKGTPEKASERAGLREGSEEKVKPPRP
 RAPESDTGDEDQDQERDAVFLKDNHLAIERKCSSITVSSTSLEAEVDFTVIGDYHGGAFEDFSRSLPEL
 DRDKSDSETEGLVFARDLKGPSSEDESGGLEDSPDRGACSTPEMPQFESVKAETMTVSSLAIRKKEIEPE
 AMLQSRVSAADSTQVDGGTPMVKDFMTTPPCITTETISTTMENSLKSGKAAAMIPGPQTVATEIRLSLSP
 IIGKDLVLTSTYGATAETLSTSTTHVTKTVKGGFSETRIEKRIIITGDEDVDQDQALALAIKEAKLQHPD
 MLVTKAVVYRETDPSPPEERDKKPQES

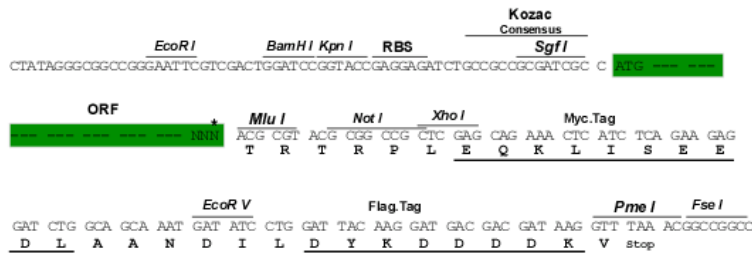
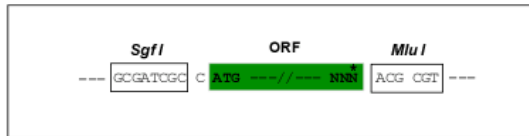
TRTRPLEQKLISEEDLAANDILDYKDDDDKV

Chromatograms: https://cdn.origene.com/chromatograms/mm9046_d06.zip

Restriction Sites: SgfI-MluI

Cloning Scheme:

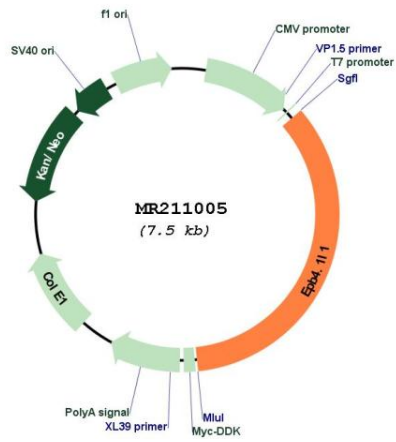
Cloning sites used for ORF Shuttling:



* The last codon before the Stop codon of the ORF

ACCN:	NM_001003815
ORF Size:	2598 bp
OTI Disclaimer:	The molecular sequence of this clone aligns with the gene accession number as a point of reference only. However, individual transcript sequences of the same gene can differ through naturally occurring variations (e.g. polymorphisms), each with its own valid existence. This clone is substantially in agreement with the reference, but a complete review of all prevailing variants is recommended prior to use. More info
OTI Annotation:	This clone was engineered to express the complete ORF with an expression tag. Expression varies depending on the nature of the gene.
Components:	The ORF clone is ion-exchange column purified and shipped in a 2D barcoded Matrix tube containing 10ug of transfection-ready, dried plasmid DNA (reconstitute with 100 ul of water).
Reconstitution Method:	<ol style="list-style-type: none">1. Centrifuge at 5,000xg for 5min.2. Carefully open the tube and add 100ul of sterile water to dissolve the DNA.3. Close the tube and incubate for 10 minutes at room temperature.4. Briefly vortex the tube and then do a quick spin (less than 5000xg) to concentrate the liquid at the bottom.5. Store the suspended plasmid at -20°C. The DNA is stable for at least one year from date of shipping when stored at -20°C.
RefSeq:	NM_001003815.2 , NP_001003815.1
RefSeq Size:	6308 bp
RefSeq ORF:	2601 bp
Locus ID:	13821
Cytogenetics:	2 77.39 cM
MW:	97.2 kDa
Gene Summary:	May function to confer stability and plasticity to neuronal membrane via multiple interactions, including the spectrin-actin-based cytoskeleton, integral membrane channels and membrane-associated guanylate kinases.[UniProtKB/Swiss-Prot Function]

Product images:



Circular map for MR211005