

## Product datasheet for **MR210992**

### 2310066E14Rik (BC030451) Mouse Tagged ORF Clone

#### Product data:

Product Type:	Expression Plasmids
Product Name:	2310066E14Rik (BC030451) Mouse Tagged ORF Clone
Tag:	Myc-DDK
Symbol:	2310066E14Rik
Synonyms:	2310066E14Rik; AI837433
Mammalian Cell Selection:	Neomycin
Vector:	pCMV6-Entry (PS100001)
E. coli Selection:	Kanamycin (25 ug/mL)



[View online »](#)

**ORF Nucleotide Sequence:**

>MR210992 representing BC030451  
 Red=Cloning site Blue=ORF Green=Tags(s)

TTTTGTAATACGACTCACTATAGGGCGGCCGGGAATTCGTCGACTGGATCCGGTACCGAGGAGATCTGCC  
 GCC**GCGATCGCC**

ATGTTACGGCGACAGGAGGAGCTCGAGAATGGGACGGCCTGGTCCCTGTCTCTGAATCGTCAGATGATT  
 CATCAAGCCCGCAGCTCTCTGGCACAGCTCGACTCAACTCCCAAGCCTCTGGTGAACAGCCTGAGCC  
 CCTGCCTGTCCAAGTTGCCTTCCGAAGGCCAGAGAGCCTCACGTCTGGTCCATGGATGAAGAGCCAGCC  
 ATGACCCCATCCCTGGTCAATGGGCATGCCCTTACAGCCGACTCTCAGCCACATCAGCGAGGCCAGCG  
 TGGATGCTGCCTTACTGAGGCCGTGGAAGCTGTGGACTCACAAAGCCCAATCCAGGGCCTAGCCCGCT  
 TGTCTATCCAGATTCCACCCACGTGGAGCGTGTCAAGTGTCTGCCTGTCTCAACAATGGCCATTCT  
 GCCACAAGTCCCGCCCTCAGTACAACCTGGCCCCGCCCCACATTTATAGACCCTGCCCAACGACACAGC  
 TAGACTTGGTTCACAAAACCACAGACTCCGCCCTTCTGAGTTGCCCAGCATCACACATACTACGACAAG  
 CTCTGCATATAGTGTGTAAAGCCTTGTCAACAGTGTCCAAGCCTAACTCCACCACTATAGTTTCTGCC  
 CACACAACCACGCCCTCTCCCTCACCTCCACAGGCTCTGTTCCAATGCAACAGACTCAACCCAGGCTA  
 CCCAAGCCCTACTCACAGTACCCCAAGCCCTACCCATACTACTATACGCCCTCACCCACACCACTGTAAG  
 CCCTACACATAGCTCCCCGAGCCCCATACACACTACCCCGAGCCCCACCCATACCACTGTAAGTCCCACC  
 TGCACTACTCAAAGCTCCGGCCACAGTACCCTAGTCCCACTCAAGAAGCCAAGATGTCAACTCATACCA  
 CCGGTGCTGTGGGCCCGTCCAGACCACTACAAGTCCCATTTCCACAACCTGAAAGCCCTCCCTTCTAC  
 AGACGTGGCTATAATCTCCAGCTCCTCTGCAGAATCCACCGGCCAGGCACTGAACCTCTGCCCTGTAGT  
 CACCCAGCTCCCTCCCTACACTAAAGCAGACCCACAGCTTCTGCACCTCTTACCAGAGTCTTGCTT  
 CCTCTGGTTCAAAACCCCTCACAAGCCCTGCCCGGATTCCCAAGAACAAATCCCTAAGAGCCCAAGTTC  
 CTCTCCCTCATCTAGTGGCCCTGAACCCCAACATTCAGAACATAACCTGGCCGCAGTTGCTCAAGCCCA  
 GTCCCTGAGGCAACGGGAGGAGCTGGGGACAGAAGGCTTGAAGAAGCTCTTGGGACCCTAATGTCTGCC  
 TTGATGACTATCGTGGTCAAGTCCCTGAGCTGCAGGGCCTGGAGCAGGAGGTGACTCGGTGGAGAGTCT  
 GCTCATGCAGAGACAAGGCTGACTCGAAGCCGGGCTTCCAGTCTTAGCATCACTGTGGAGCATGCCCTG  
 GAGAGTTCAGCTTCTCAATGATGATGAAGATGAAGACAACGATGGTCCCGGGACAGGCACACAAGCA  
 GCCCAGAGGTTGTGGCAGAGGACAGACTAGACTCATCAAATGGCCAGTCTCTAAGCACAGGTTGTTGAGC  
 CCTGGATGCTACCTTGGTCCAGCACCTGTACCCTGCAGCCGCTCCTGCTGAAACTGGGCACATTTGGA  
 CCCCTGCGCTGCCAGGAGCCTGGGCCCTGGAACGGCTGCTGCGGAAGCGGTGTATTCCAGGAAGTGT  
 GTGAACGCAGCAAGCTATGGGGAACTCTGCCACATCTGCCAGGAAGTGGTACAGTTCTCCGCCTCTCG  
 GCCCGGCTTCTGACCTTTTGGGACCAGTGTACAGAGGGACTCAGCCCTTCATCTGCTCTGTGGAGCGG  
 GTGCTCCTCACCTTCTGCAGCCAGTACGGTGCCTGCTTTCCCTGCGCCAGCCAGGCTTAGCCGAGGCTG  
 TGTGTGTAAGTTCCTGGAAGATGCCCTGGGACAGAAGCTGCCAGGAGGCCCAACCAGGCCCGGGGA  
 GCAGTTCACCATCTTCCAATTCTGGAGTTATGTAGAAGCCTTGGACAGCCCTCCATGGATGCCTGTGTG  
 ACAGAGACTGCAGAGGAGGTGTTACTAGTACAGAACCTGAACTCTGATGACCAGGCCGTTGTGCTGAAAG  
 CCCTAAGGTTAGCACCGGAGGGCGCTGCGAAAGGATGGGCTTCGGGCTCTTAGCTCCCTGCTGGTCCA  
 CGGCAACAACAAAGTATGGCTGCTGTGACACTCAGCTTCCGAGCCTGTCACTTGGTCTGCTTCCCG  
 GAAAGGGCTCTCTTGTGCTTCTGGACCAGCTGGAAGATGGGGACGTGCAGACTCGAGTGGCCGGATGCC  
 TGGCTTTGGGCTGTATCAAGGCTCCTGAGGGCATTGAGCCCTGGTGTACTTGTGCCAAACAGACACAGA  
 AGCTGTGAGGGAAGCCCGCCGAGAGCCTGCAGCAGTGCAGGGAGGAAGGACAGTCTGCTCATCGACAG  
 CTAGAGGAGTCCCTGGATGCTCTGCCCTGCATCTTTGGGCCAGCAGCATGGCCAGCACAGCATT

**ACGCGT**ACGCGGCCGCTCGAGCAGAACTCATCTCAGAAGAGGATCTGGCAGCAATGATATCCTGGATT  
 ACAAGGATGACGACGATAAGGTTTAA

Protein Sequence: >MR210992 representing BC030451  
 Red=Cloning site Green=Tags(s)

MLRRQEELNGTAWLSSESSDDSSSPQLSGTARHSTPKPLVQQPEPLPVQVAFRRPESL TSGMDEEPA  
 MTPSLVNGHAPYSRTL SHISEASVDAAL TEAVEAVDSQSP IGPSP LVYPDSTHVERVSSVLPVLNNGHS  
 ATSPALSTTGPAFTFIDPAPTTQLDLVHKTTDSAPSELPSITHTTTSSAYSASVSLVNSVPSLTSTTIGSA  
 HTTTPSPSLTSTGSPVNDSTQATPSPHSTPSPHSTHTTIRLTHTTVSPHSSPSPIHTTTPSPHSTTVSPT  
 CTPSSGHSTTSPTQEAKMSTHTTGAVGPVQTTTSPISTTESPSPSTDVAIISSSSAESTGPGTEPLPCS  
 HPASPPYTKADPTASCTSYQSLASSGSKPLTSPAPDSPEQIPKSPSSPSSSAPEPQHSEHNLAAVAQAP  
 VPEATGGAGDRRLEEALGTLMSALDDYRGQFPELQGLEQEVTRLESLLMQRQGLTRSRASSLSITVEHAL  
 ESFSLNDEDEDNDGPGDRHTSSPEVVAEDRLDSSNGQSLSTGCSALDATALVQHLHYCSRLLKLGTGFG  
 PLRCQEAVALERLLREARVFQEVCSKLVGN SATSAQEVVQFSASRPGFLT FWDQCTEGLSPFICSVER  
 VLLTFCSQYGARLSLRQPLAEAVCVKFLLEDALGQKLP RRQP GPGEQFTIFQFWSYVEALDSPSMDACV  
 TETAEEVLLVQNLNSDDQAVVLKALRLAPEGLRDKDLRALSSLLVHGNNKVMMAAVSTQLRSLSLGPVFR  
 ERALLCFLDQLEDGDVQTRVAGCLALGCIKAPEGIEPLVYLCQTDTEAVREARQSLQCCGEEGQSAHRQ  
 LEESLDALPCIFGPSSMASTAF

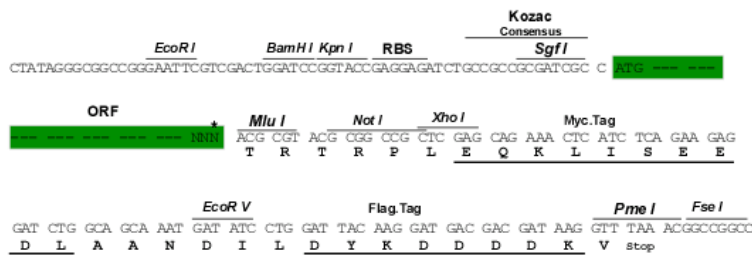
TRTRPLEQKLISEEDLAANDILDYKDDDDKV

Chromatograms: [https://cdn.origene.com/chromatograms/mm9043\\_a01.zip](https://cdn.origene.com/chromatograms/mm9043_a01.zip)

Restriction Sites: SgfI-MluI

Cloning Scheme:

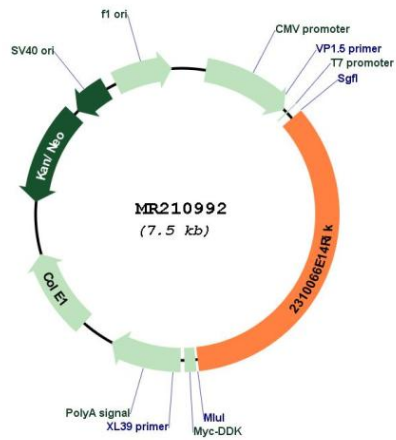
Cloning sites used for ORF Shuttling:



\* The last codon before the Stop codon of the ORF

<b>ACCN:</b>	BC030451
<b>ORF Size:</b>	2586 bp
<b>OTI Disclaimer:</b>	The molecular sequence of this clone aligns with the gene accession number as a point of reference only. However, individual transcript sequences of the same gene can differ through naturally occurring variations (e.g. polymorphisms), each with its own valid existence. This clone is substantially in agreement with the reference, but a complete review of all prevailing variants is recommended prior to use. <a href="#">More info</a>
<b>OTI Annotation:</b>	This clone was engineered to express the complete ORF with an expression tag. Expression varies depending on the nature of the gene.
<b>Components:</b>	The ORF clone is ion-exchange column purified and shipped in a 2D barcoded Matrix tube containing 10ug of transfection-ready, dried plasmid DNA (reconstitute with 100 ul of water).
<b>Reconstitution Method:</b>	<ol style="list-style-type: none"><li>1. Centrifuge at 5,000xg for 5min.</li><li>2. Carefully open the tube and add 100ul of sterile water to dissolve the DNA.</li><li>3. Close the tube and incubate for 10 minutes at room temperature.</li><li>4. Briefly vortex the tube and then do a quick spin (less than 5000xg) to concentrate the liquid at the bottom.</li><li>5. Store the suspended plasmid at -20°C. The DNA is stable for at least one year from date of shipping when stored at -20°C.</li></ol>
<b>RefSeq:</b>	<a href="#">BC030451.1</a>
<b>RefSeq Size:</b>	3209 bp
<b>RefSeq ORF:</b>	2588 bp
<b>Locus ID:</b>	75687
<b>Cytogenetics:</b>	8 D3
<b>MW:</b>	117.6 kDa
<b>Gene Summary:</b>	Downstream effector protein for Rho-type small GTPases that plays a role in cell polarity and directional migration. Acts as an adapter protein, linking active Rho proteins to STK24 and STK26 kinases, and hence positively regulates Golgi reorientation in polarized cell migration upon Rho activation. Involved in the subcellular relocation of STK26 from the Golgi to cytoplasm punctae in a Rho- and PDCD10-dependent manner upon serum stimulation. [UniProtKB/Swiss-Prot Function]

Product images:



Circular map for MR210992