

Product datasheet for **MR210935**

Map7d1 (NM_144941) Mouse Tagged ORF Clone

Product data:

Product Type:	Expression Plasmids
Product Name:	Map7d1 (NM_144941) Mouse Tagged ORF Clone
Tag:	Myc-DDK
Symbol:	Map7d1
Synonyms:	AV028413; BC019977; mKIAA1187; Mtap7d1; Parcc1; Rprc1
Mammalian Cell Selection:	Neomycin
Vector:	pCMV6-Entry (PS100001)
E. coli Selection:	Kanamycin (25 ug/mL)



[View online »](#)

ORF Nucleotide Sequence:

>MR210935 representing NM_144941
 Red=Cloning site Blue=ORF Green=Tags(s)

TTTTGTAATACGACTCACTATAGGGCGGCCGGGAATTCGTCGACTGGATCCGGTACCGAGGAGATCTGCC
 GCC**CGCATCGCC**

ATGGAGAGTGGCCCGGTGTGGAGCCCGCCCGGGCGCACCCGACGTGTGTTAGCCAGGATCCCCAAG
 AGCCAAGACCGTCTCCGGAAGGTGACCCTTCCCTCCTCCGCCGCAACACCGATGTGAGCTTGGTTCC
 TGACACTCCCCAGACACACTCCTGCCCTGAAGACTGCCACGAATCCTAAGCAGCTCCCACTGGAACCA
 GGGAAATCCACAGGGCAGATCTCACCTCAGCCAGCTCCCCACAGGAAGAATGCCCGTCTCAGAAGCCA
 AGAGCAGGGGCCACCCCCACAGCCACAGGACCAGGGAGGCCAAGCCTTCTCGAAGAAGCAGCCAACC
 ATCCCCACCACAGTCCAGCCTCTGACAGCCCTCCTGCCAAGCAAGATGTAAAGAAGGCAGGAGAGAGA
 CACAAGCTTGCCAAAGAGCGCCGAGAAGAGCGGGCAAGTACCTGGCGGCCAAGAAGGCAGTGTGGTTGG
 AGAAGGAGGAAAAAGCCAAGCGCTCCGGGAAAAGCAACTCCAGGAGCGCCGACGGCTGGAGGAGCA
 GCGGCTTAAAGCCGAACAGCGCCGGGCTGCCCTGGAGGAGCGGCAGAGGCAAGCTTGAGAAAAACAAG
 GAGCGCTATGAAGCAGCAATCCAGCGGTAGTGAAGAAGACGTGGGCTGAGATCCGGCAACAGCGCTGGT
 CCTGGGCAGGGGCCCTGCACCACAGTCCCTGGACGTAAAGACCAGTGGGAGCAGGTGCTCCGTGTCGGC
 AGTAAACCTGCCAAACACGTGGACTCTATAATCAACAAGCGGCTCTCAAAGTCTCTGCCACGCTCTGG
 AACTCCCCAGTAGAAATCGCAGCCTGCAGCTGAGCGCATGGGAGAGCAGCATTGTGGATCGTCTGATGA
 CGCCACCTCTCCTTCTGGCTCGGAGTCGACGCGGTCACACTGCCCGCAACGGCAGGGACCAGGG
 TAGGGGACGCGGCCCTGGGAGACGCCACGAGGGCCCGGGCAGGGGCCAGCCTCGCGCCGGGCCACAC
 CCCGACCGCACTATCCCTCTGCAGCCGTGCCAGTGTGCCCGCTCGGCTCCGCCAGCCCCCTGACGC
 CTTGTAGCGCCCTCGGAGCGCGCAGCGTGCACCCCGTCCGGGAGCGCCAGAGCGGCAAGCCCGG
 CGCCGGTGGCAGCCCGCTGGCGCGCCCGGCTGGAAGCCACGCGGTGCAGAAAAAGGAGAAGAAG
 GACAAGGAGCGGAAAACGAGAAGGAAAAGAGCGCCCTGGCCCGCAACGGAACCTCAAGAAGCGCCAGT
 CGCTGCCAGCGTCTATCAGACCTCGGCTCTCCACCGGCTCTGAGCTCAGCCCTAAGTCCAAGGCCGGCC
 ATCCTCTCCCTCTACAACCTGGCACAGACCTGCCTCCCCCTGCCCGAGCCAGGACCAGGACATGCCCTT
 CCTCCAAAACCACATCCCCCGAGGCACCACTGCATCACCAAGGGGCGGGTTCGGAGGAAGGAGGAGG
 CAAAAGAGAGCCCGACCGCTCGGGGCTGAGGACAAAACCACCGCAAGAGTAGAGCCGCTGAGGAGAA
 GGAGCCAGCTGCCCGAGCCTCACCAGCGCCCTACCGGTGCCCTCGCCACCCAGCCAGCCTCAGAAG
 GAGCAATCCTCAACACAGATCCCTGCAGAACTGCTGTCCGGCTGTCCAGCTGCTCCGACTGCCCTC
 CTACCGCTGCTCCCTCGGTGACCCTAGCAAACCCATGGCGGGCACACAGACCGAGAGGAAGCCACGCG
 GCTCCTGGCTGAAAAGCGGCGCCAGGCTCGGGAACAGAGGGAACGGAAGAACAGGAGCGGAAGCTGCAG
 GCTGAAAGGGACAAGCGAATGCGAGAGGAGCAGCTGGCCCGGGAGGCTGAAGCCCGGGCTGAACGTGAGG
 CCGAGGCGCGGAGACGGGAGGAGCAGGAGGCTCGAGAGAAGGCGCAGGCTGAGCAGGAGGAGCAGGAGCG
 ACTGCAGAAGCAGAAAGAGGAAGCCGAAGCCCGGTCCCGGGAAGAAGCTGAGCGCCAGCGCCAGGAGCGG
 GAAAAGCACTTTCAGAAGGAGGAACAGGAGAGACAAGAGCGAAGAAGCGGCTGGAGGAGATAATGAAGA
 GGACTCGGAAATCAGAAGCCCGCAAACCAAGAAGCAGGATGCAAAGGAGACCGCAGCTAACAATTCCGG
 CCCAGACCTGTGAAAGCTGTAGAGACTCGGCCCTCTGGGCTACAGAAGGATTCTATGCAGAAAGAGGAG
 CTGGCCCCCAGGAGCCACAGTGGAGCCTGCCAAGCAAGGAGATGCCAGGGTCCCTGGTAAATGGCCTGC
 AGCCTCTCCAGCGCACAGGAGAACGGTCTCCCAAAGGGAACCGCTGGGGACAAGAGTCTGGTTCG
 CACAGCAGAGGGGCTCCTCCATTTGCAGAGGCAGAAGCCTTCTCAAGAAAGCAGTGGTGCAGCCTCCA
 CAGGTCACAGAAGTTCTT

ACGCGTACGCGGCCGCTCGAGCAGAACTCATCTCAGAAGAGGATCTGGCAGCAATGATATCCTGGATT
 ACAAGGATGACGACGATAAGGTTTAA

Protein Sequence: >MR210935 representing NM_144941
 Red=Cloning site Green=Tags(s)

MESGPRVEPGGAPAAVLARIPQEPRPSPEGDPSPPPPPTMSALVPDTPDTPPALKTATNPKQLPLEP
 GNPTGQISQPAPPQEECPSSSEAKSRGPTPTATGPBREAKPSRRSSQPSTTVPASDSPPAKQDVKKAGER
 HKLAKERREERAKYLAACKAVWLEKEEKAKALREKQLQERRRRLEEQLKAEQRRAALEERQKLEKNK
 ERYEAAIQRSVKKTWAEIRQQRWSWAGALHHSSPGRKTSGRCSVSAVNLPHKVDSDIINKRLSKSSATLW
 NSPSRNRSLQLSAWESSIVDRLMPTPLSFLARSRSAVTLPRNGRDQGRGSGPGRRPTRARAGASLAPGPH
 PDRTHPSAAVPVCPRASASPLTPCSAPRSAHRCTPSGERPERRKPGAGGSPALARRRLEATPVQKKEKK
 DKERENEKEKSALARERNLKKRQSLPASIRPRLSTGSELSPKSKARPSSPSTTWHRPASPCSPGPGHAL
 PPKPPSPRGTTASPKGRVRRKEEAKESPSPSGPEKDNHRKSRAAEEKEPAAPASPAPSPVPSPTPAQPQK
 EQSSTQIPAETA VPAVPAAPTAPPTAAPS VTPSKPMAGT TDREEA TRLLAEKRRQAREQREEREQERKLQ
 AERDKRMREEQLAREAEARAEREAEARRREEQEAAREKAQAEQEEQERLQKQKEEAEARSREEAERQRQER
 EKHFQKEEQERQERRKLEEIMKRTRKSEAAETKKQDAKETAANNSGPDVPKAVETRP SGLQKDSMQKEE
 LAPQEPQWLSLPSKEMPGSLVNLQPLPAHQENGFSPKGTAGDKSLGRTAEGLLPFAEAEAF LKKA VVQPP
 QVTEVL

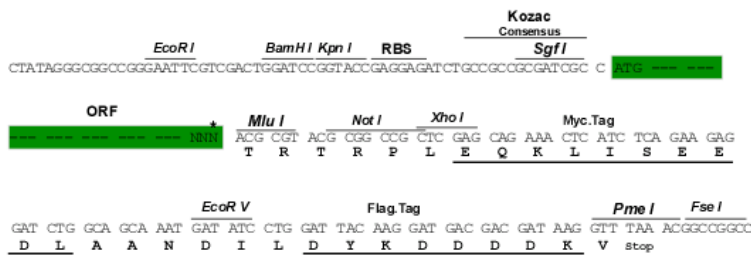
TRTRPLEQKLISEEDLAANDILDYKDDDDKV

Chromatograms: https://cdn.origene.com/chromatograms/mm9104_d04.zip

Restriction Sites: SgfI-MluI

Cloning Scheme:

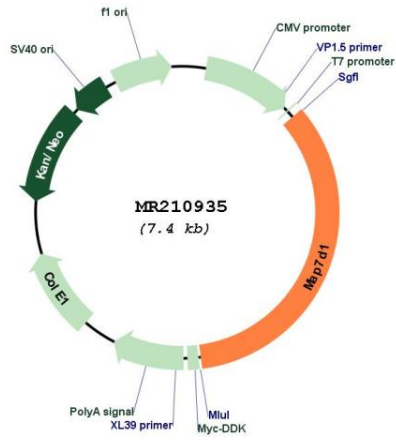
Cloning sites used for ORF Shuttling:



* The last codon before the Stop codon of the ORF

ACCN:	NM_144941
ORF Size:	2538 bp
OTI Disclaimer:	The molecular sequence of this clone aligns with the gene accession number as a point of reference only. However, individual transcript sequences of the same gene can differ through naturally occurring variations (e.g. polymorphisms), each with its own valid existence. This clone is substantially in agreement with the reference, but a complete review of all prevailing variants is recommended prior to use. More info
OTI Annotation:	This clone was engineered to express the complete ORF with an expression tag. Expression varies depending on the nature of the gene.
Components:	The ORF clone is ion-exchange column purified and shipped in a 2D barcoded Matrix tube containing 10ug of transfection-ready, dried plasmid DNA (reconstitute with 100 ul of water).
Reconstitution Method:	<ol style="list-style-type: none"> 1. Centrifuge at 5,000xg for 5min. 2. Carefully open the tube and add 100ul of sterile water to dissolve the DNA. 3. Close the tube and incubate for 10 minutes at room temperature. 4. Briefly vortex the tube and then do a quick spin (less than 5000xg) to concentrate the liquid at the bottom. 5. Store the suspended plasmid at -20°C. The DNA is stable for at least one year from date of shipping when stored at -20°C.
RefSeq:	NM_144941.3 , NP_659190.3
RefSeq Size:	3402 bp
RefSeq ORF:	2541 bp
Locus ID:	245877
UniProt ID:	A2AJI0
Cytogenetics:	4 D2.2
MW:	93.3 kDa

Product images:



Circular map for MR210935