

## Product datasheet for **MR210932**

### Adam9 (NM\_007404) Mouse Tagged ORF Clone

#### Product data:

Product Type:	Expression Plasmids
Product Name:	Adam9 (NM_007404) Mouse Tagged ORF Clone
Tag:	Myc-DDK
Symbol:	Adam9
Synonyms:	AU020942; MDC9; mKIAA0021; Mltng
Mammalian Cell Selection:	Neomycin
Vector:	pCMV6-Entry (PS100001)
E. coli Selection:	Kanamycin (25 ug/mL)



[View online »](#)

**ORF Nucleotide Sequence:**

>MR210932 representing NM\_007404  
 Red=Cloning site Blue=ORF Green=Tags(s)

TTTTGTAATACGACTCACTATAGGGCGGCCGGAATTCGTGACTGGATCCGGTACCGAGGAGATCTGCC  
 GCC**CGGATCGCC**

ATGGGGCCGCGCGCTCTCGCCCTTGCCTCTCTGCGACTAAGGTGGCTGCTGGCGTGTGGCTTGTCTGG  
 GCCAGTCTCGAGGCCGGCGACCAGACTTGGAAACAGACTGTCCATCTTTCTTCTATGAAATTATTAC  
 TCCTTGAGATTAAGTAGAGAAAAGGAAGCTCTGGGGCCAGTTCACAGCAGATCTTTACGTCATC  
 CAGGCCAAAGAAAACAGCATATTATTCACTTGGAAAAGAAACACAGACCTTTTACCTAATGATTTGTAG  
 TTTACACCTACGACAAGGAAGGCTCCCTACTCTGACCATCCCAACGTACAGAGCCATTGTCACATCG  
 AGGCTATGTGGAGGAGTGCAGAATCCGCGTGTGTGAGCGCTGCTTTGGACTCAGAGGCTTGTCTG  
 CATTTGGAGAATGCCAGTTTGAATTGAACCTCTGCACAACAGCTCACACTTTGAGCACATATTTTACC  
 CCATGGATGGCATCCACCAGGAGCCTCTGAGATGTGGAGTCTCTAACAGGGACACAGAGAAGGAAGGCAC  
 ACAGGGGGATGAGGAGGAGCATCCGAGTGTCACTCAGCTGCTGCCAGAGAAGAGCTGTTCTACCACAG  
 ACCCGCTATGTGGAGCTGTTTATTGTTGTAGACAAGGAAAGGTACGACATGATGGACGGAACCAGACTG  
 CTGTGAGAGAAGAGATGATTTCGCTTAGCAAACCTACCTGGATAGCATGTACATCATGTTAAACATTGGAAT  
 TGTGCTGGTTGGACTAGAAATTTGGACAGACAGAAATCCTATCAATAAATTGGAGGAGCTGGAGATGTG  
 CTGGGCAACTTTGTTTCACTGGCGGAAAAGTTCCTTATAACTCGTTGGAGACACGACAGTGCACAGTTGG  
 TTTTGAAGAAAGGCTTTGGTGAAGTGCAGGAATGGCGTTTGTAGGAACAGTATGTTCAAGGAGCCACGC  
 AGGTGGATCAATGTGTTGGGCAATCACTGTGGAGACATTTGCATCCATTGTTGCTCATGAATTGGGG  
 CATAACCTTGAATGAATCATGATGATGGGAGAGAGTGTCTGTGGAGCAAAGAGCTGTATCATGAATT  
 CAGGAGCATCCGGTCCAGAACTTTAGCAGTTGCAAGTGGGAGGACTTTGAGAAGTTAACGTTGAATAA  
 GGGAGGAAGCTGCCTGCTTAACATCCCGAAGCCGACGAAGCCTACAGCGCCCTCCTGTGGTAATAAG  
 CTGGTGGACCCTGGAGAGGAGTGTGACTGCGGCACAGCGAAGGAGTGTGAGGTGGACCCATGCTGTGAAG  
 GAAGCACTTGTAAAGTCAAGTCAATTTGCTGAGTGTGCATATGGCGACTGTTGTAAGATTGCCAGTTCCT  
 TCCAGGAGGCTCCATGTGCAGAGGGAAGACCAGTGTGATGTGATGTTTCTGAGTACTGCAACGGTTCCTCT  
 CAGTTCTGCCCGCAGATGTTTCAATTCAGAAATGGATATCCTTGGCAGAACAGCAAAGCCTACTGCTACA  
 ATGGCATGTGCCAATATTATGACGCGCAGTGTGAGTGTGATGTTTGGTTCAAAGGCTAAGGCTGCCCAAG  
 AGATTGCTTCATTGAAGTCAATTTAAAGGTGACAGATTTGGCAACTGTGGTTTCTCCGGCAGTGTGATC  
 AAGAAGTGTGCCACTGGGAACGCGCTGTGTGAAAGCTTCAATGCGAGAATGTACAGGACATGCCGGTGT  
 TTGGAATAGTACCAGCTATCATTAGACACCCAGTTCGAGGCACCAAAATGCTGGGGTGTGGATTTCCAGCT  
 TGGTTCGGACGTTCCAGACCCAGGGATGGTGAATGAAGGCACCAAAATGTGATGCTGGCAAGATTTGCAGG  
 AATTTTCAAGTGTGAAATGCTTCTGTCTGAATATGACTGTGACATTCAGGGAAAATGTGATGGCCATG  
 GGGTGTGTAACAGCAATAAGAAATGTCAGTGTGAAGACGGCTGGGCTCCCCCACTGTGACACCAAAGG  
 ATATGGAGGAAGCGTGGACAGCGGGCCGACGTATAATGCAAAGAGCACAGCACTGAGGGACGGGCTTCTG  
 GTCTTCTTCTTCAATCGTCCCCTTGTGCGGCTGCCATTTTCTCTTATCAAGAGAGATGAACTAC  
 GGAAAACCTTCAGGAAGAAGAGATCACAAATGTGAGATGGCAGAAATCAAGCAAACGTCTCTAGACAGCC  
 AGGAGATCCTAGTATCTCCAGACCACCAGGGGGCCAAATGTCTCCAGACCACCAGGGGGCCAGGTGTC  
 TCCAGACCACCAGGGGGCCAGGTGTCTCCAGACCACCAGGGGGCCAGGTGTCCTCCAGACCACCACCTG  
 GGCATGGAACAGATTCCAGTACCAACCTACGCCGCAAGCAGCCTGCGCAGTTCCTGCAAGGCCACC  
 TCCACCACAACCGAAAATATCTTCTCAGGGAACTTGATTCCGGCTCGGCCGCTCCTGCACCTCCTTTA  
 TATAGCTCCCTCACC

**ACGGT**ACGCGGCCGCTCGAGCAGAACTCATCTCAGAAGAGGATCTGGCAGCAATGATATCCTGGATT  
 ACAAGGATGACGACGATAAGGTTTAA

**Protein Sequence:** >MR210932 representing NM\_007404  
 Red=Cloning site Green=Tags(s)

```

MGPRALSPLASLRLRWLLACGLLGPVLEAGRPDLEQTVHLSSYEIITPWRLTRERREALGPSSQQISYVI
QAQKQHIHLELRNTDLLPNDV VVYTYDKEGSLSDHPNVQSHCHYRGYVEGVQNSAVAVSACFGLRGLL
HLENASFGIEPLHNSSHFEHIFYPMDGIHQEPLRCGVSNRDEKEGTQGDDEEHPSVTQLRRRRRAVLPO
TRYVELFIVVDKERYDMMGRNQTAVREEMIRLANYLDSMYIMLNIRIVLVGLEIWTDRNPINIIGGAGDV
LGNFVQWREKFLITRWRHDSAQLVLKKGFGGTAGMAFVGTVC SRSHAGGINVFGQITVETFASIVAHELG
HNLGMNHDDGRECF CGAKSCIMNSGASGRNFS SCSAEDFEKLT LNKGGSCLLNIPKPDEAYSAPSCGNK
LVDPGEECDCGTAKACEVDPCEGSTCKLKSF AECAYGDCCKDCQFL PGGSMCRGKTSECDVPEYCNSS
QFCPPDVF IQNGYPCQNSKAYCYNGMCQYYDAQCQVIFGSKAKAAPRDCF IEVNSKGD RFGNCGFSGSEY
KKCATGNALCGKLCENVDMPVFGIVPAIIQTPSRGTKCWGVDFQLGSDVPDPGMVNEGTKCDAGKICR
NFQCVNASVLNYDCDIQKCHGHGVCNSNKNCHCEDGWAPPHC DTKGYGGSVDSGPTYNAKSTALRDGLL
VFFFLIVPLVAAAIFFL IKRDEL RKTFRKKRSQMSDGRNQANVSRQPGDPSISRPPGGPNVSRPPGGPGV
SRPPGGPGVSRPPGGPGVSRPPGGHGRNFPVPTYAAKQPAQFPSRPPPPQPKISSQGNLIPARPAPAPPL
YSSLT
  
```

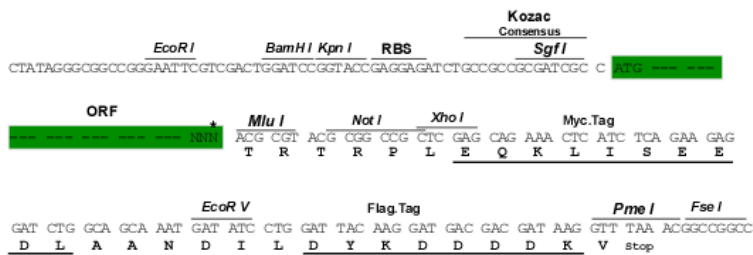
TRTRPLEQKLISEEDLAANDILDYKDDDDKV

**Chromatograms:** [https://cdn.origene.com/chromatograms/mm9006\\_a03.zip](https://cdn.origene.com/chromatograms/mm9006_a03.zip)

**Restriction Sites:** SgfI-MluI

**Cloning Scheme:**

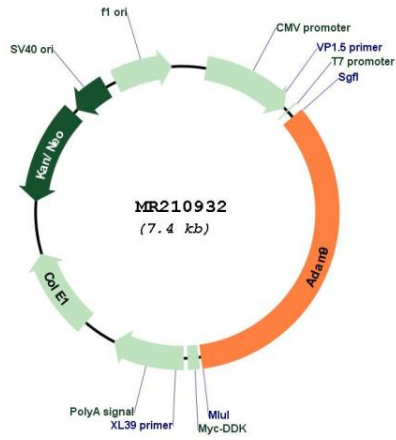
Cloning sites used for ORF Shuttling:



\* The last codon before the Stop codon of the ORF

<b>ACCN:</b>	NM_007404
<b>ORF Size:</b>	2535 bp
<b>OTI Disclaimer:</b>	The molecular sequence of this clone aligns with the gene accession number as a point of reference only. However, individual transcript sequences of the same gene can differ through naturally occurring variations (e.g. polymorphisms), each with its own valid existence. This clone is substantially in agreement with the reference, but a complete review of all prevailing variants is recommended prior to use. <a href="#">More info</a>
<b>OTI Annotation:</b>	This clone was engineered to express the complete ORF with an expression tag. Expression varies depending on the nature of the gene.
<b>Components:</b>	The ORF clone is ion-exchange column purified and shipped in a 2D barcoded Matrix tube containing 10ug of transfection-ready, dried plasmid DNA (reconstitute with 100 ul of water).
<b>Reconstitution Method:</b>	<ol style="list-style-type: none"><li>1. Centrifuge at 5,000xg for 5min.</li><li>2. Carefully open the tube and add 100ul of sterile water to dissolve the DNA.</li><li>3. Close the tube and incubate for 10 minutes at room temperature.</li><li>4. Briefly vortex the tube and then do a quick spin (less than 5000xg) to concentrate the liquid at the bottom.</li><li>5. Store the suspended plasmid at -20°C. The DNA is stable for at least one year from date of shipping when stored at -20°C.</li></ol>
<b>RefSeq:</b>	<a href="#">NM_007404.2</a> , <a href="#">NP_031430.2</a>
<b>RefSeq Size:</b>	4003 bp
<b>RefSeq ORF:</b>	2538 bp
<b>Locus ID:</b>	11502
<b>UniProt ID:</b>	<a href="#">Q61072</a>
<b>Cytogenetics:</b>	8 13.7 cM
<b>MW:</b>	92.5 kDa
<b>Gene Summary:</b>	Cleaves and releases a number of molecules with important roles in tumorigenesis and angiogenesis, such as TEK, KDR, EPHB4, CD40, VCAM1 and CDH5 (PubMed:19273593). May mediate cell-cell, cell-matrix interactions and regulate the motility of cells via interactions with integrins (PubMed:10825303).[UniProtKB/Swiss-Prot Function]

Product images:



Circular map for MR210932