

## Product datasheet for **MR210900**

### **Abcf1 (NM\_013854) Mouse Tagged ORF Clone**

#### **Product data:**

Product Type:	Expression Plasmids
Product Name:	Abcf1 (NM_013854) Mouse Tagged ORF Clone
Tag:	Myc-DDK
Symbol:	Abcf1
Synonyms:	Abc50; AU041969; D17Wsu166e; GCN20
Mammalian Cell Selection:	Neomycin
Vector:	pCMV6-Entry (PS100001)
E. coli Selection:	Kanamycin (25 ug/mL)



[View online »](#)

**ORF Nucleotide Sequence:**

>MR210900 representing NM\_013854  
 Red=Cloning site Blue=ORF Green=Tags(s)

TTTTGTAATACGACTCACTATAGGGCGGCCGGGAATTCGTCGACTGGATCCGGTACCGAGGAGATCTGCC  
 GCC**CGCATCGCC**

ATGCCAAGGGTCCCAAGCAACAGCCGCCCGAGCCGAGTGGATCGGGGACGGCAGGGCAGAGCCCCG  
 CGGACAAAGTAGTGAAGAAAGGAAAAAGGACAAGAAGACCAAAAAGACGTTCTTTGAAGAGCTGGCAGT  
 AGAGGACAAACAAGCTGGGGAAGAGGAAAAATTGCAGAAGGAGAAGGAGCAGCAACAGCAACAGCAGCAA  
 CAGAAGAAAAAGCGAGACACCAGGAAAGGCCGTCGGAAAAAGGATGTGGACGATGATAGTGATGAGAGAG  
 TGCTCATGGAGCGACTTAAGCAACTGTCTGTGCCAGCCAGTGTAGGAAAGATGAGGTGCCTGCCCCAT  
 ACCCCGAGGACGGAAGAAGGCCAAGGGTGGAAATGTTTTGAAGCCCTGATTCAGGATGACAGTGAGGAG  
 GAGGAAGAGGAGGAAGAAACCGTGTCTCAAGCCCGCCAAGCCAGAGAAGAATCGCATCAATAAGCCG  
 TGGCTGAGGAACCTCCTGGGCTCAGGAGTAAAAAGGGAAAGGAGGAGAAATCAAAAGGGAAAGCCAAGAG  
 TAAACCTGCTGCTGCAGACAGTGAAGGGGAAGAGGAGGAGGACACAGCTAAAGAAAAGGAGCCCTCT  
 CAGCAAGGGAAGGACAGAGACAAAAAGGAGGCTGAGCAGGGCTCAGGGGAAGAGAAGGAAGAAAGAAAG  
 GGGACTTGAAGGCAAACGATCCCTATGCCAACCTTAGCAAAAAGGAAAAGAAAAGCTAAAGAAAACAGAT  
 GGATTATGAACGACAGGTGGAGTCATTGAAAGCAGCTAATGCTGCAGAAAACGACTTCTCTGTGTCCAG  
 GCAGAGGTGTCTTCCCGCCAGGCAATGTAGAAAAATGCATCTGACATTAAGTTGGAAAAGTTCAGCATCT  
 CCGCCACGGCAAGGAGCTATTCGTCAATGTGTGACCTGTACATAGTAGCCGGCCGCCGCTATGGGCTGGT  
 GGGACCAACGGCAAAGGCAAACACCGCTTCTGAAGCACATTGCCAACCGTGCCCTGAGCATCCCCCT  
 AACATTGACGTGCTGTGTGCGAGCAGGAGGTGGTGGCTGATGAAACACCAGCCGTGCAAGCTGTCTCTC  
 GAGCAGATACCAAGCAGTGAAGTTGCTAGAGGAGGAGAGACGGCTTCAGGGACAGCTGGCAGGGGGA  
 TGACACTGCTGCTGAGAACTAGAAAAAGGTGTATGAGGAACTGCGAGCTACCGGGGCAGCAGCTGCAGAG  
 GCCAAGGCACGGCGGATCCTGGCTGGCTTGGGCTTCGACCCTGAGATGCAGAATCGGCCACACAGAAGT  
 TCTCTGGGGTTGGAGAATGCGTGTCTCCCTGGCCAGGGCACTGTTATGGAGCCAACGCTGCTGATGTT  
 GGATGAGCCCACTAACCACTGGACCTCAACGCCGTCTCTGGCTCAATAACTACCTTCAGGGCTGGAGG  
 AAGACGTTGCTGATTGTCTCCACGACCAGGGCTTCTGGATGACGTTTGCAGTATCATCCACCTGG  
 ACACCCAGCGGCTCCATTACTACAGGGCAATTACATGACCTTCAAGAAGATGTACCAGCAGAAGCAGAA  
 AGAGCTGCTAAAGCAGTACGAGAAGCAGGAGAAGAACTGAAGGAGCTGAAGGCTGGGGGCAAGTCCACC  
 AAGCAAGCGGAAAAGCAAACAAGGAAGTCTGACTCGAAAACAGCAGAAGTGCCGACGGAAAACCCAGG  
 ATGAAGAGTCTCAGGAGCCCTGAGCTCCTGAAGCGTCCAAGGAGTACACCGTGCGCTTCACCTTCCC  
 AGACCCCCCGCTCTCAGCCACCTGTGCTGGGCTGCACGGTGTGACGTTTGGCTACGAGGGGCAGAAG  
 CCACTCTTTAAGAATCTAGATTTCCGGCATCGACATGGACTCCCGGATTTGCATCGTGGGTCCCAATGGTG  
 TGGGGAAGAGCAGCACTACTCCTGCTGCTGACTGGCAAGCTGACACCGACCAACGGGGAGATGAGGAAGAA  
 CCATCGGCTGAAAATCGGCTTCTTTAACAGCAGTACGACAGCAGCTGCACATGGAGGAGACGCCCACT  
 GAGTACCTGCAGCGGAGCTTCAATCTGCCCTACCAGGATGCCCGAAGTGCTTGGCCGCTTTGGCCTGG  
 AGAGCCACGCCACACCATCCAGATCTGCAAACTCTCCGGTGGCAGAAAAGCCCGAGTTGTGTTTGGGA  
 GCTGGCCTGTGGGAGCCTGATGCTCATCTTGGATGAACCAACCAATAACTTGGACATAGAGTCCATC  
 GATGCCCTGGGGGAGGCCATCAACGACTACAAGGGGGCTGTGATCGTTGTCAGCCACGATGCGCGCCTCA  
 TCACAGAAACCAACTGCCAGTTGTGGTGGTGGAGGAGCAGGGTGTGAGTCAAGTTCAGACGCGCAGTTTGA  
 TGACTACAAGCGAGAGGTGTTGGAGGCCCTGGGTGAGGTCATGGTCAACCGTCTCGGGAT

**ACGCGT**ACGCGGCCGCTCGAGCAGAACTCATCTCAGAAGAGGATCTGGCAGCAATGATATCCTGGATT  
 ACAAGGATGACGACGATAAGGTTTAA

Protein Sequence: >MR210900 representing NM\_013854  
Red=Cloning site Green=Tags(s)

MPKGPKQQPEPEWIGDGEGTSPADKVVKKGKKDKTKKTFEELAVEDKQAGEEEKLQKEKEQQQQQQ  
QKKKRDRTRKGRKKDVEDDSDERVLMERLKQLSVPASDEEDEVPAIPRGRKKAKGGNVFEALIQDDSEE  
EEEEENRVLKPAKPEKNRINKAVAEPPGLRSKKGKEEKSKGKAKSKPAAADSEGEEDTAKEKEPP  
QQGKDRDKKEAEQSGEKEEKEGDLKANDPYANL SKKEKKLKKQMDYERQVESLKAANAENDFSVSQ  
AEVSSRQAMLENASDIKLEKFSISAHGKELFVNADLYIVAGRRYGLVGPNGKGTLLKHIANRALSIPP  
NIDVLLCEQEVVADETPAVQAVLRADTKRLRLLEEERLQGLEQGGDTAAEKLEKVYEELRATGAAAAE  
AKARRILAGLGFPEMQNRPTQKFSGGWRMRVSLARALFMEPTLLMLDEPTNHLDLNAVIWLNLYLQGWR  
KTLIVSHDQGFDDVCTDIHLDTQRLHYRGNMYTFKKMYQQKQKELKQYEQEKELKELKAGGKST  
KQAEKQTKVELTRKQKCRKNQDEESQEPPELLKRPKEYTVRFVFPDPPPLSPPVLGLHGVTFGYEGQK  
PLFKNLDFGIDMSRICEVGPNGVGKSTLLLLLTGKLTPTNGEMRKNHRLKIGFFNQYAEQLHMEETPT  
EYLQRSFNLPYQDARKCLGRFGLESHAHTIQICKLGGQKARVVFAELACREPDVILDEPTNNDIESI  
DALGEAINDYKGAIVVSHDARLITETNCQLWVVEEQGVSQIDGDFDDYKREVLEALGEVMVNRPRD

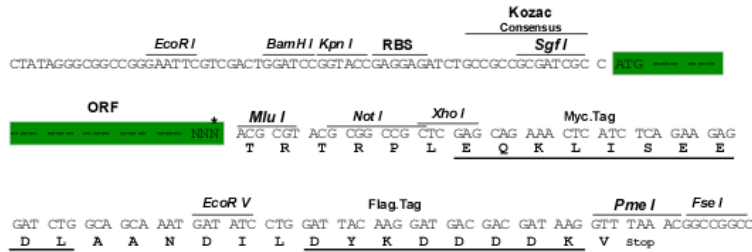
TRTRPLEQKLISEEDLAANDILDYKDDDDKV

Chromatograms: [https://cdn.origene.com/chromatograms/mm9048\\_a04.zip](https://cdn.origene.com/chromatograms/mm9048_a04.zip)

Restriction Sites: Sgfl-Mlul

**Cloning Scheme:**

Cloning sites used for ORF Shuttling:



\* The last codon before the Stop codon of the ORF

**ACCN:** NM\_013854

**ORF Size:** 2511 bp

**OTI Disclaimer:** The molecular sequence of this clone aligns with the gene accession number as a point of reference only. However, individual transcript sequences of the same gene can differ through naturally occurring variations (e.g. polymorphisms), each with its own valid existence. This clone is substantially in agreement with the reference, but a complete review of all prevailing variants is recommended prior to use. [More info](#)
**OTI Annotation:** This clone was engineered to express the complete ORF with an expression tag. Expression varies depending on the nature of the gene.

**Components:** The ORF clone is ion-exchange column purified and shipped in a 2D barcoded Matrix tube containing 10ug of transfection-ready, dried plasmid DNA (reconstitute with 100 ul of water).

**Reconstitution Method:**

1. Centrifuge at 5,000xg for 5min.
2. Carefully open the tube and add 100ul of sterile water to dissolve the DNA.
3. Close the tube and incubate for 10 minutes at room temperature.
4. Briefly vortex the tube and then do a quick spin (less than 5000xg) to concentrate the liquid at the bottom.
5. Store the suspended plasmid at -20°C. The DNA is stable for at least one year from date of shipping when stored at -20°C.

**RefSeq:** [NM\\_013854.1](#), [NP\\_038882.1](#)

**RefSeq Size:** 3207 bp

**RefSeq ORF:** 2514 bp

**Locus ID:** 224742

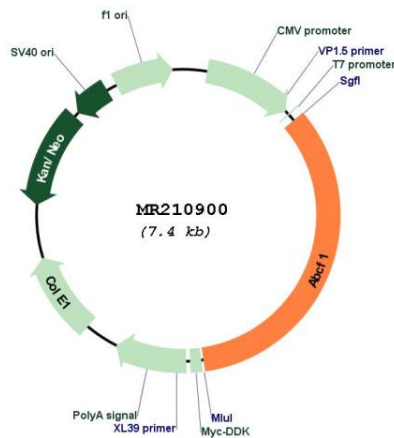
**UniProt ID:** [Q6P542](#)

**Cytogenetics:** 17 18.8 cM

**MW:** 95.4 kDa

**Gene Summary:** Required for efficient Cap- and IRES-mediated mRNA translation initiation. Not involved in the ribosome biogenesis (By similarity).[UniProtKB/Swiss-Prot Function]

**Product images:**



Circular map for MR210900